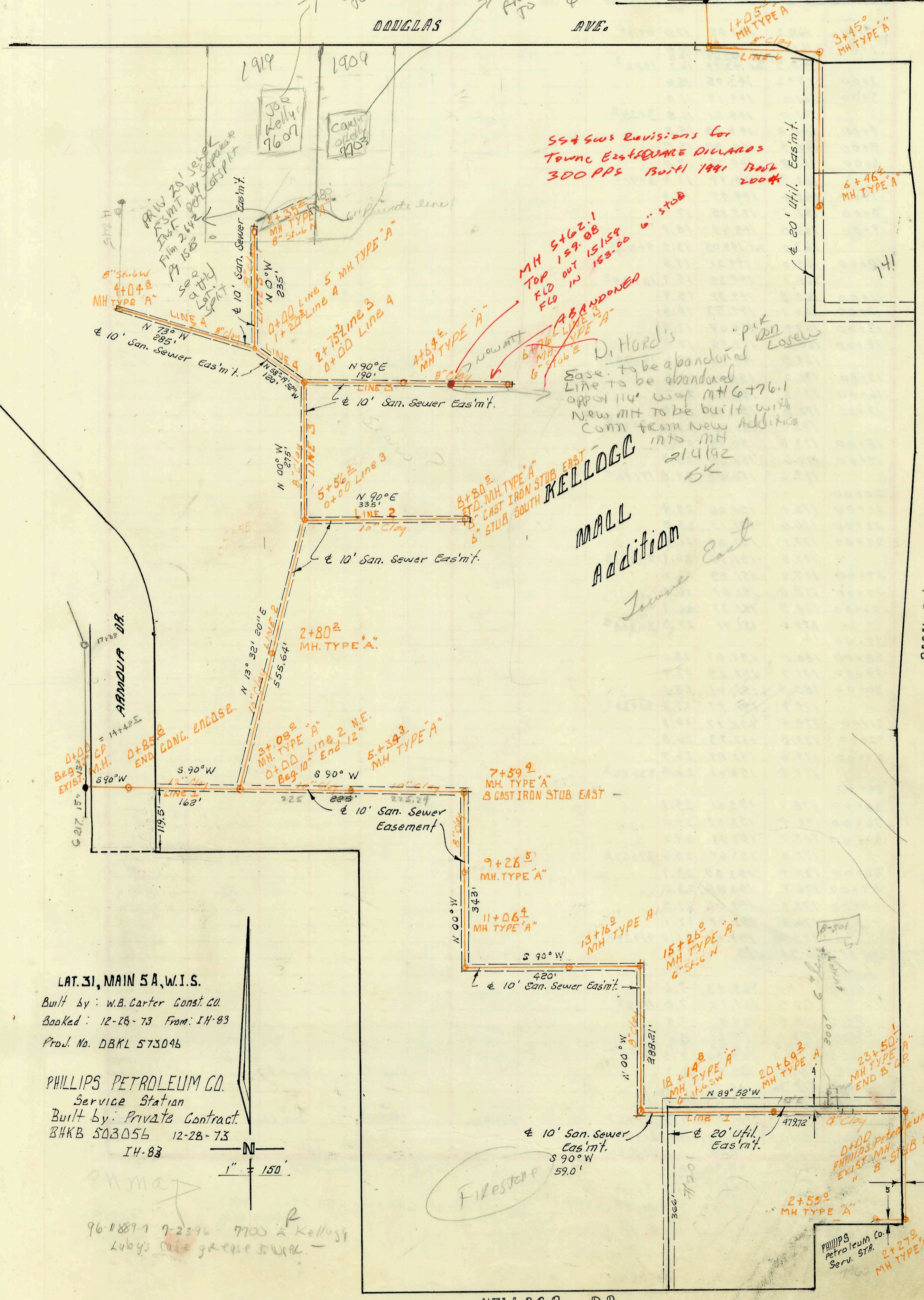


CONSTRUCTIVE SERVICE RECORD

addresses changed from 7607 E Douglas to 7703 E Douglas 4/25/62

addresses changed from 7703 E Kellogg to 7703 E Douglas 4/25/62



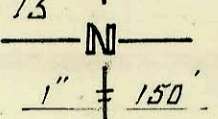
SS&Sws Revisions for Towne East Square DILLARDS 300 PPS Built 1991 Book 200\*

Di Hard's Base to be abandoned approx 114' w of MH 6+76.1 New MHTT to be built with Conn from New Addition into MH 214192 SK

MALL Addition Towne East

LAT. 31, MAIN 5A, W.I.S. Built by: W.B. Carter Const. Co. Booked: 12-28-73 From: IH-83 Proj. No. DBKL 573046

PHILLIPS PETROLEUM CO. Service Station Built by: Private Contract. BHKB 503056 12-28-73 IH-83



96 118897 7-23-96 - 7703 & Kellogg Lubys color grease work.

KELLOGG DR.

CONSTRUCTION RECORD						SERVICE RECORD						
STATION	ELEVATION		Depth	MANHOLE	4-INCH "Y" BRANCHES		No. of Permit		House Number		DATE OF PERMITS	
	Ground	Grade			North West	South East	North West	South East	North West	South East	North West	South East
Lat 31 Main 5A WIS												
Line 1												
0+00	154.2	145.95	8.2	0+00 Exist.								
	154.5	146.16	8.3	0+85 <sup>±</sup>								
1+00	154.8	146.20	8.6									
2+00	156.2	146.45	9.7									
3+00	156.4	146.70	9.7									
	out 156.3	146.72	9.6									
	in 156.3	146.86	9.4	3+08 <sup>±</sup>								
4+00	156.6	147.11	9.5									
5+00	156.2	147.39	8.8									
	157.9	147.49	10.4	5+39 <sup>±</sup>								
6+00	159.0	147.67	11.3									
7+00	161.0	147.95	13.0		7+45		C54788		7700 E Kellogg		4-13-76	
	out 161.1	148.12	13.0		7+59 <sup>±</sup> 8" stub	8" stub E.		C43761	7700 E Kellogg			3-1-74
	in 161.0	148.29	12.7									
8+00	160.7	148.53	11.9									
9+00	160.9	149.13	11.8									
	160.5	149.27	11.2	9+26 <sup>±</sup>								
10+00	160.3	149.65	10.6									
11+00	160.2	150.15	10.0									
	out 160.2	150.16										
	in 160.2	150.21	10.0	11+06 <sup>±</sup>								
12+00	160.1	150.69	9.4									
13+00	160.6	151.19	9.4									
	160.6	151.26	9.3	13+16 <sup>±</sup>								
14+00	161.4	151.69	9.7									
15+00	161.7	152.19	9.5									
	out 162.4	152.31	10.1									
	in 162.2	152.38	9.8	15+26 <sup>±</sup> 6" stub	6" stub N.			C43763	7700 E Kellogg		3-1-74	
16+00	161.6	152.76	8.8									
17+00	162.8	153.26	9.5									
18+00	165.3	153.76	11.5									
	out 165.2	153.82										
	in 165.2	153.79	11.4	18+14 <sup>±</sup> 6" stub	6" stub SW			C43764	7700 E Kellogg	7700 E Kellogg	3-1-74	4-11-78
19+00	165.9	156.23	9.7									
20+00	166.9	156.73	10.2									
	167.4	157.07	10.3	20+69 <sup>±</sup>								
21+00	167.1	157.23	9.9									
	166.8	157.73	9.1									
	167.5	158.23	9.3									
	out 168.1	158.46	9.6									
	in 168.2	158.56	9.6	23+50 <sup>±</sup>								
Line 2												
0+00	159.2	147.06	12.1	0+00 = 3+08 <sup>±</sup> line 1								
1+00	158.5	147.36	11.1									
2+00	159.2	147.66	11.5									
	159.7	147.90	11.8	2+80 <sup>±</sup>								
3+00	159.8	147.96	11.8									
4+00	160.0	148.26	11.7									
5+00	160.3	148.56	11.7									
	out 160.4	148.73	11.7									
	in 160.4	148.83	11.6	5+56 <sup>±</sup>					C57095	7700 E Kellogg (hand)		8-6-76
6+00	161.7	148.95	12.7									
7+00	161.5	149.22	12.3									
8+00	161.2	149.49	11.7									
	160.9	149.71	11.2	8+80 <sup>±</sup> 8" stub E	8" stub E			C43819	7700 E Kellogg		3-5-74	
				8+61 <sup>±</sup> 8" stub E	8" stub E			C43820	7700 E Kellogg		3-5-74	
Line 3												
0+00	160.4	149.00	11.4	0+00 = 5+56 <sup>±</sup> line 2								
1+00	160.0	149.40	10.6									
2+00	160.9	149.80	10.1									
	out 161.5	150.10	11.4									
	in 161.5	150.20	11.3	2+75 <sup>±</sup>								
3+00	161.6	150.33	11.3									
4+00	163.9	150.83	13.1									
	164.2	151.15	13.0	4+64 <sup>±</sup>								
5+00	164.1	151.33	12.8									
6+00	164.6	151.83	12.8									
	165.3	152.20	13.1	6+76 <sup>±</sup> 6" stub E	6" stub E			C43759	7700 E Kellogg		3-1-74	
				6" stub E	6" stub E			C43719	7700 E Kellogg		3-5-74	
Line 4												
0+00	161.9	156.82	5.1	0+00 = 2+75 <sup>±</sup> line 3								
1+00	164.3	157.22	7.1									
	out 164.7	157.30	7.4									
	in 164.8	157.40	7.4	1+20 <sup>±</sup>								
2+00	165.5	157.72	7.8									
3+00	165.9	158.12	7.8									
	166.2	158.54	7.7	4+04 <sup>±</sup> 8" stub W	8" stub W			13175	7700 E Kellogg		3-15-85	
Line 5												
0+00	164.7	157.40	7.3	0+00 = 1+20 <sup>±</sup> line 4								
1+00	165.4	157.80	7.6									
2+00	166.3	158.20	8.1									
	166.6	158.34	8.3	2+35 <sup>±</sup> 8" stub N.								

Continued on Page M-211

9124-7700 E Kellogg 1914-7-6-83 Gerald Thompson  
 #16088-7700 E Kellogg #1909-Janice Todman 4-10-86 180' of Private 6" (we only 31352  
 #91-25631-7 6/27/11 7700 E Kellogg (with C's) - we have bottle - (can to exist 4' line  
 with 2nd block 1-4' C.O.  
 24- C43760- " 3-1-74 " (8+28)  
 24- C43762 " 3-1-74 " (12+20.4)  
 24- C43742- " 11-12-74 (Sambos-301) Bafu Scott (14.4' S. of O.H. at end of 6" line or 285.6' No. of 8" main)  
 #2-1434-7 7700 E Kellogg - D. Hurst - N/C - 6 SDR 3S  
 M.H. stub.