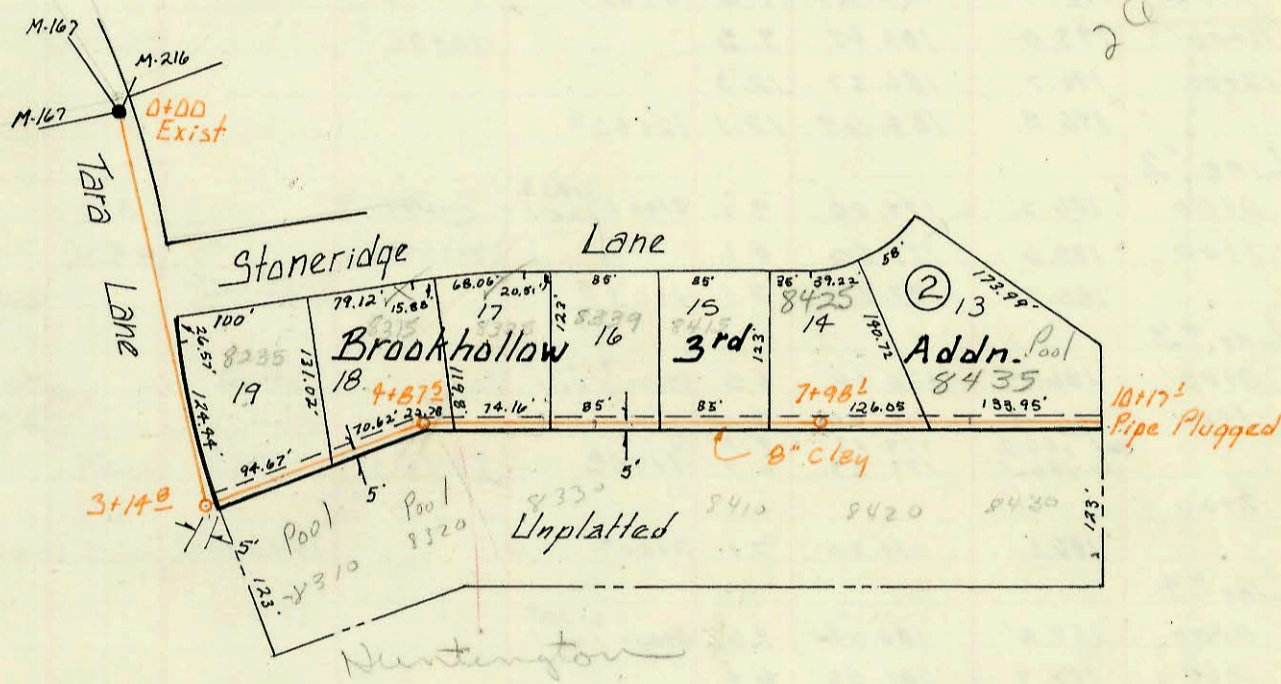


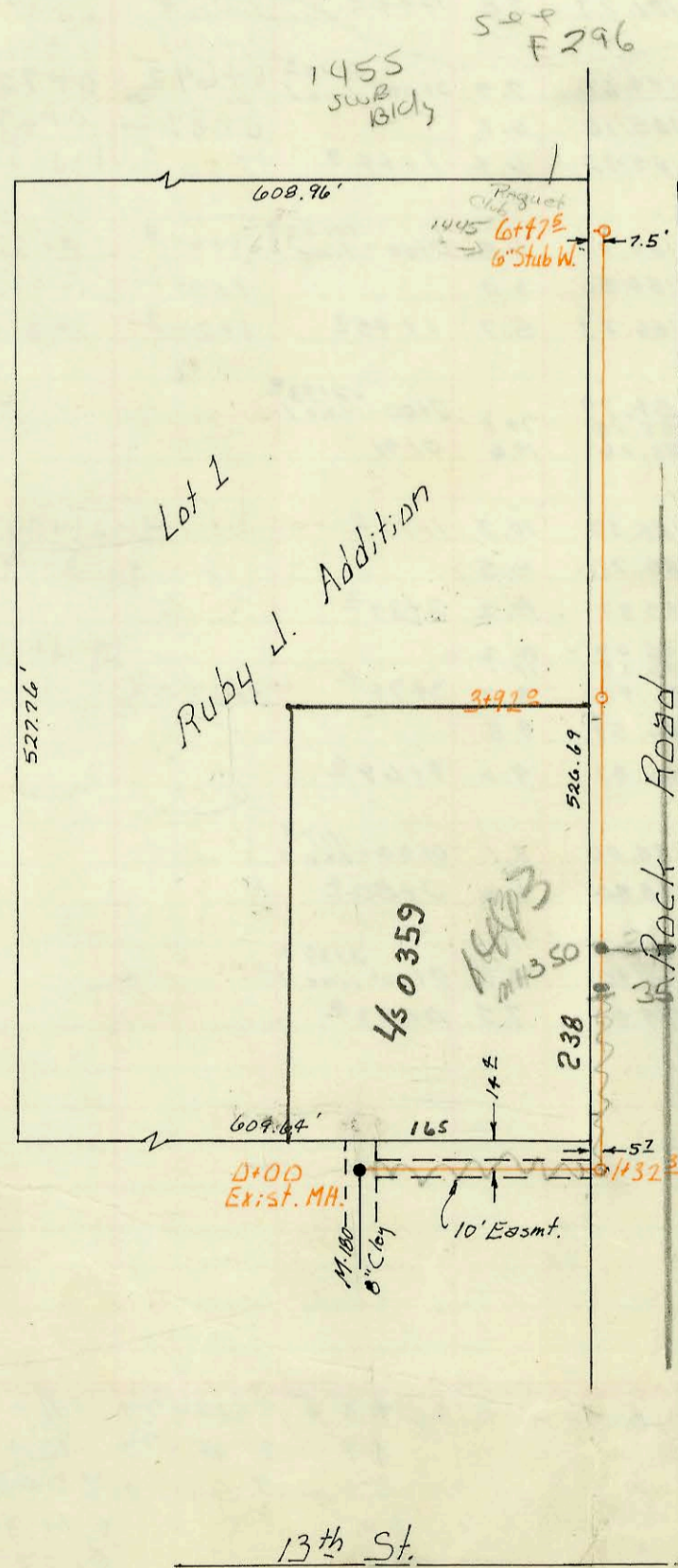
Lat 19 Main 9 W.I.S.
 built by: W.B. Carter Const. Co.
 Booked 2-21-74 from I.H.-69
 Proj. No. DBKL573049
 ON MAP

Lat 21 Main 9 W.I.S.
 Built by: W.B. Carter Const.
 Booked 2-27-74 from I.H.-69
 Proj. No. DBKL573047
 ON MAP



Scale 1/150

Private San. Sewer
 Wichita Racquet Club
 Built by: Mid-States Const. Co.
 Booked 3-4-74 from I.H.-79
 Proj. No. BAKB503026
 ON MAP



Scale 1/100

Run
 2011-7307

50' F296

1455 sub bldg

F296

13th St.

CONSTRUCTION RECORD

SERVICE RECORD

| STATION | ELEVATION | | Depth | MANHOLE | 4-INCH "Y" BRANCHES | | No. of Permit | | House Number | | DATE OF PERMITS | | |
|--------------------------------------|-----------|------------|-------|-------------------------|-----------------------|-----------------------|-----------------------|------------|----------------------|---------------|-----------------|------------|---------|
| | Ground | Grade | | | North West | South East | North West | South East | North West | South East | North West | South East | |
| Lat 10 Main 17 WIS Cont. | | | | | | | | | | | | | |
| Line 5 | | | | | | | | | | | | | |
| 0+00 | 157.2 | 146.50 | 10.7 | 0+00-3+31 ² | Line 4 | top 0+83 ⁴ | | C46194 | 8501 | | | 8-13-74 | |
| 1+00 | 159.7 | 146.90 | 12.8 | | top 0+36 | | C49138 | 8492 | Arthur Circle | | 4-22-75 | | |
| 2+00 | | | | | top 1+64.3 | M.H. Jap | C49140 | C46090 | 8500 | Arthur Circle | 4-22-75 | 8-5-74 | |
| | 161.5 | 147.30 | 14.2 | 2+02 ² | | | | | 8515 | | | | |
| Line 6 | | | | | | | | | | | | | |
| 0+00 | | 145.25 | | 0+00-12+66 ² | Line 1 | 2+91 ² | 0+70 ² | C43369 | 8521 | 8454 | 2-5-74 | 4-22-75 | |
| 1+00 | 160.3 | 146.75 | 13.5 | | top 3+51 ² | | C43367 | 8529 | 8454 | | 2-5-74 | | |
| 2+00 | 162.2 | 148.25 | 13.9 | | top 4+33 ² | M.H. Jap | C43366 | C46089 | 8510 | Arthur Circle | 2-5-74 | 8-5-74 | |
| | 162.5 | 149.00 | 13.5 | 2+50 ² | top 5+02 ² | top 3+53 ² | C43365 | C44260 | 8615 | Arthur Circle | 2-5-74 | 4-2-74 | |
| 3+00 | 163.0 | 149.25 | 13.7 | | top 1+19 ² | top 7+23 ² | C43838 | C44261 | 8509 | Arthur Circle | 3-6-74 | 4-2-74 | |
| 4+00 | 164.2 | 149.75 | 14.4 | | | top 4+75 ⁴ | | C44262 | 8616 | Arthur Circle | | 4-2-74 | |
| | 165.3 | 150.20 | 15.1 | 4+90 ² | | top 5+52 ⁵ | | C44263 | 8629 | Arthur Circle | | 4-2-74 | |
| 5+00 | 165.4 | 150.25 | 15.1 | | top 5+66 ¹ | | C43367 | | | | 2-5-74 | | |
| 6+00 | 165.4 | 150.75 | 14.6 | | | | | | | | | | |
| 7+00 | 164.5 | 151.25 | 13.2 | | top 7+03.3 | top 7+27 ² | C44545 | C47525 | 8701 | Arthur Circle | 4-18-74 | 11-25-74 | |
| | 164.8 | 151.45 | 13.3 | 7+41 ² | top 7+53.9 | 8+15 ² | C44546 | C48770 | 8703 | Arthur Circle | 4-18-74 | 3-24-75 | |
| 8+00 | 165.2 | 151.75 | 13.4 | | top 7+94.9 | 8+95 ² | C44544 | C48771 | 8709 | Arthur Circle | 4-18-74 | 3-24-75 | |
| 9+00 | 164.7 | 152.25 | 12.4 | | top 8+39.1 | | C44543 | | 8711 | Arthur Circle | 4-18-74 | | |
| | 164.7 | 152.65 | 12.0 | 9+82 ² | M.H. Jap | top M.H. Jap | C45252 | C50721 | 8725-27 ² | 8726-28 | 6-11-74 | 8-7-75 | |
| Lat 19 Main 9 W.I.S. | | | | | | | | | | | | | |
| Line 1 | | | | | | | | | | | | | |
| 0+00 | 153.1 | 143.30 | 9.8 | 0+00 Exist | | | | | | | | | |
| | out 153.9 | 143.60 | 10.3 | 0+30 ² | top 0+91 | | C47430 | | 8225 | | | 11-19-74 | |
| 1+00 | 157.3 | 144.40 | 13.3 | | 1+70.0 | 0+95 ² | C60109 | C48774 | 8309 | 8330 | 2-28-75 | 3/24/75 | |
| | out 158.3 | 144.73 | 13.4 | 1+36 ² | | 2+05 | | C48727 | 8310 | | | 3-19-75 | |
| 2+00 | 156.7 | 145.50 | 11.2 | | 2+68.6 | 2+57.6 | C49940 | C49930 | 8319 | 8320 | 6-19-75 | 6-16-75 | |
| 3+00 | 156.2 | 146.50 | 9.7 | | 3+55.9 | 3+67 ² | C49941 | C48145 | 8329 | 8330 | 6-17-75 | 1-21-75 | |
| 4+00 | 158.3 | 147.50 | 10.8 | | | 4+77 ² | | C48219 | 8410 | | | 1-28-75 | |
| | out 160.3 | 148.00 | 12.3 | 4+52 ² | top 4+61 ² | | C47705 | | 8429 | | 12-9-74 | | |
| 5+00 | 161.9 | 151.45 | 10.5 | | top 5+05 ² | top 5+26 ² | C46261 | C52870 | 8419 | 8420 | 8-19-74 | 12-18-75 | |
| 6+00 | 165.1 | 152.35 | 12.7 | | | | | | | | | | |
| 7+00 | 167.2 | 153.25 | 14.0 | | 7+72 ² | | | | | | | | |
| 8+00 | 168.5 | 154.11 | 14.4 | | top 8+20 ² | 8+56 | C47255 | C54619 | 8450 | 8510 | 11-1-74 | 4-5-76 | |
| | 168.4 | 154.51 | 13.9 | 8+93 ² | top 8+88 | 8+89 | C47934 | C54619 | 8440 | 8520 | 1-6-75 | 4-5-76 | |
| Line 2 | | | | | | | | | | | | | |
| 0+00 | 168.1 | 154.00 | 14.1 | 0+00-7+72 ² | Line 1 | 0+51.6 | 0+58 ² | 57225 | C48755 | 8455 | 8509 | 8-13-74 | 3-21-75 |
| 1+00 | 168.2 | 154.40 | 13.8 | | top 1+21.5 | | top 1+25 ² | C49569 | 8445 | 8519 | 5-20-75 | | |
| | 168.2 | 154.52 | 13.7 | 1+30 ² | | | | C52143 | 8519 | | | 10-28-75 | |
| Lat 21 Main 9 W.I.S. | | | | | | | | | | | | | |
| 0+00 | 152.6 | 143.00 | 9.6 | 0+00 Exist | | | | | | | | | |
| 1+00 | 153.3 | 143.30 | 10.0 | | | | | | | | | | |
| 2+10 | 152.9 | 143.63 | 9.3 | | | | | | | | | | |
| 3+00 | 153.3 | 143.90 | 9.4 | | 3+38.8 | | C55440 | | 8235 | 8310 | 5-14-76 | 4-16-80 | |
| | 153.4 | out 143.95 | 9.4 | 3+14 ² | 3+57.8 | 3+84.4 ² | C55434 | 5624 | 8235 | 8310 | 5-14-76 | 4-16-80 | |
| 4+00 | 152.9 | 144.30 | 8.6 | | 4+53.9 | | C48813 | 2134 | 8315 | 8310 | 4-2-75 | 12-17-80 | |
| | 154.5 | out 144.57 | 9.9 | 4+87 ² | | | C50502 | | 8315 | | 7-23-75 | | |
| 5+00 | 154.6 | 144.70 | 9.9 | | top 5+23.1 | 5+235 ² | C53344 | 2133 | 8325 | 8320 | 1-23-76 | 10-17-80 | |
| 6+00 | 157.0 | 145.00 | 12.0 | | top 6+21 ² | 6+51.4 | C50356 | 61366 | 8339 | 8330 | 7-16-75 | 6-2-77 | |
| 7+00 | 160.8 | 145.30 | 15.5 | | 6+93.2 | | C53963 | | 8415 | | 2-27-75 | | |
| | 164.3 | 145.60 | 18.7 | 7+98 ² | M.H. Jap | M.H. Jap | C47625 | C61728 | 8422 | 8422 | 12-5-74 | 6-28-77 | |
| 8+00 | | | | | top 9+15.7 | 8+12.3 | C49970 | C56551 | 8430 | 8430 | 10-05-74 | 6-18-75 | |
| 9+00 | 165.7 | 145.90 | 19.8 | | | | | | | | | | |
| 10+00 | 166.3 | 146.20 | 20.1 | | | | | | | | | | |
| 10+17 ² | 166.1 | 146.26 | 19.8 | | | | | | | | | | |
| Priv. San. Sew. Wichita Racquet Club | | | | | | | | | | | | | |
| 0+00 | 191.9 | 181.20 | 10.7 | 0+00 Exist | | | | | | | | | |
| 1+00 | 187.6 | 181.40 | 8.2 | | 1+63.8 ² | | 14915 | | 1443 N. Rock Rd. | | 10-29-85 | | |
| | out 188.6 | out 181.46 | 7.1 | 1+32 ² | 2+55.7 ² | | C67909 | | 1443 N. Rock Rd. | | 8-17-78 | | |
| 2+00 | 188.2 | 181.70 | 6.5 | | | | | | | | | | |
| 3+00 | 188.8 | 181.90 | 6.9 | | 3+82.9 | | C64676 | | 1445 N. Rock Rd. | | 12-30-77 | | |
| 4+00 | 189.4 | 182.10 | 7.3 | | | | | | | | | | |
| 5+00 | 190.2 | 182.30 | 7.9 | | | | | | | | | | |
| 6+08 | 191.5 | 182.52 | 9.0 | | 6+97 ² | 6" std West | C39327 | | 1407 Rock Rd. | | 6-1-73 | | |
| | 191.6 | 182.60 | 9.0 | | | | | | | | | | |

REC 68100-82970-84100 Huntington Ave. M. Club (top 7+98.1)
 top - 045254-8721 Lockman Cir 6-11-74 (9+18.3)
 top - 045254-8719 " " 6-11-74 (5+73.3)

Surf 2002-02182 8/13/02 1551 N Rock Rd
 BEANO PHS (Remed Gen sis adding KATHEN family)

Rec