

# Sub Main & Extension SS #23

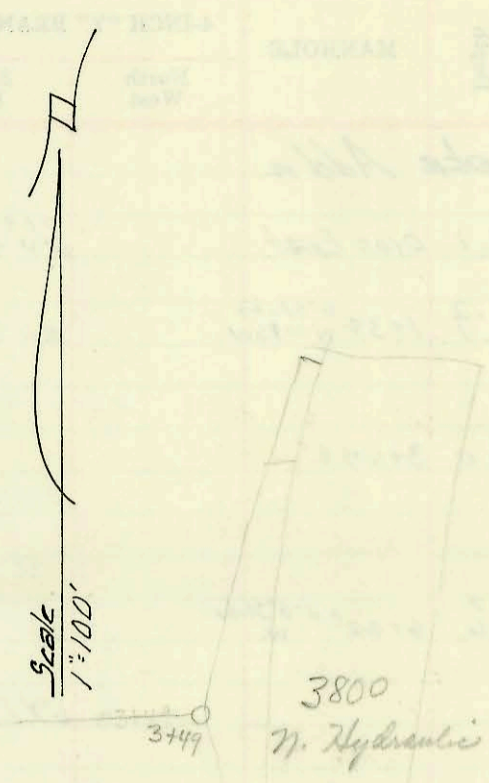
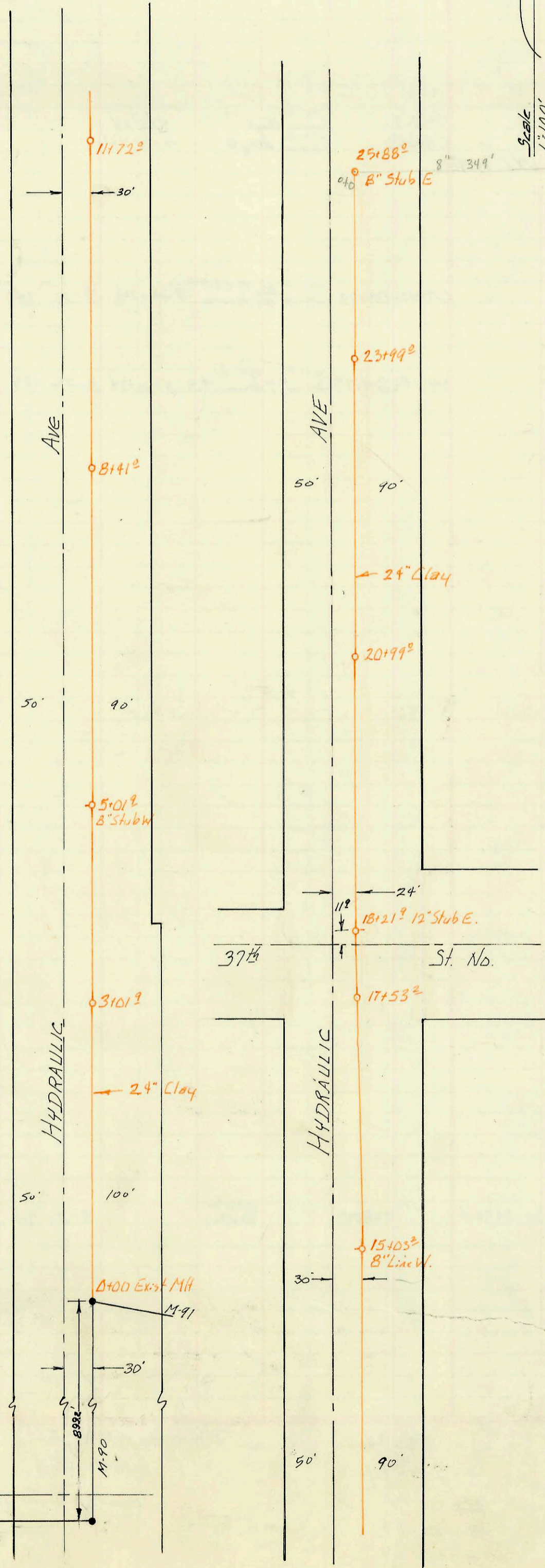
Built by: Utility Cont. Inc.

Booked 3-15-74 from IH-82

Proj. No. BHK B503068

on map

CONSTRUCTION RECORD



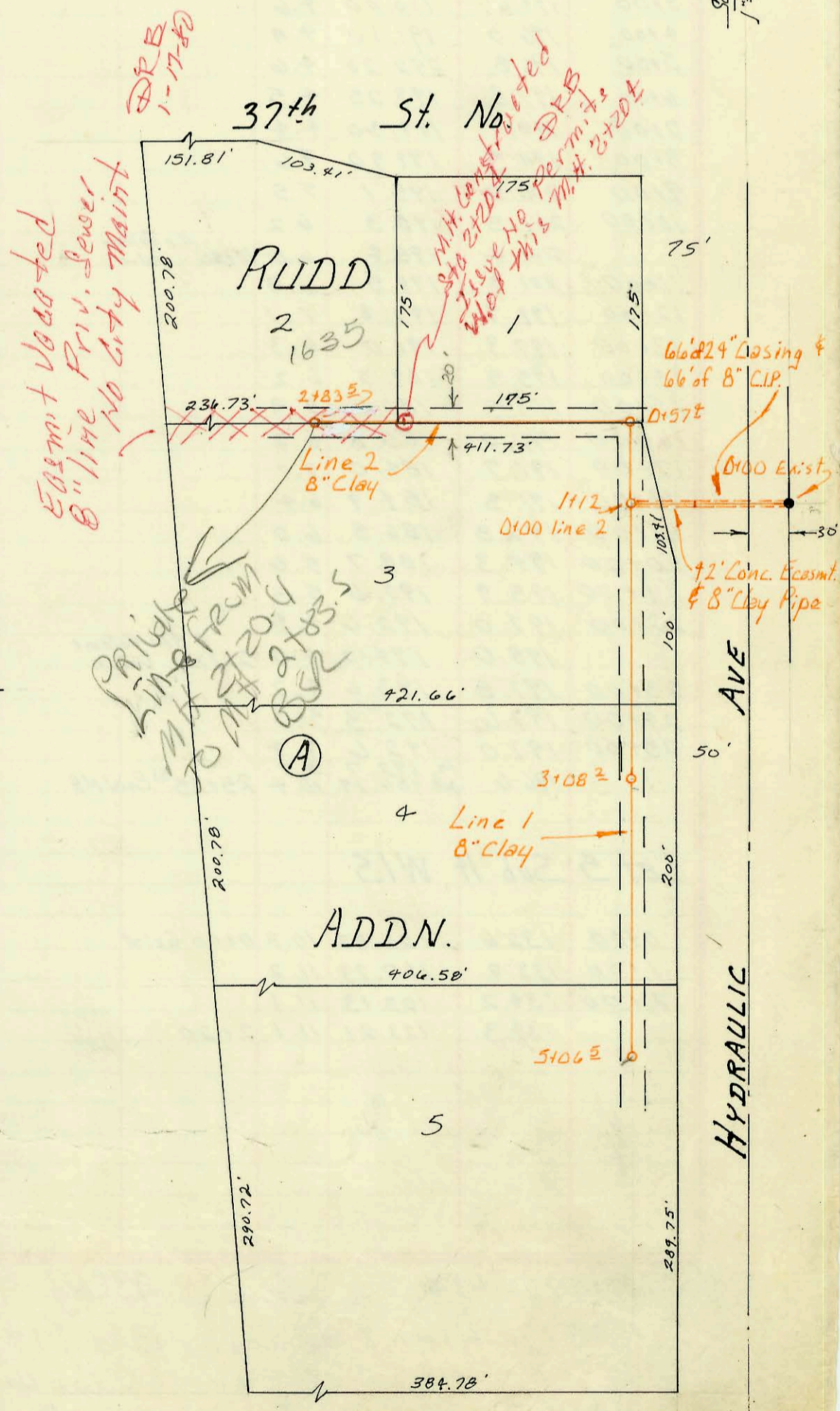
## Private San. Sew. to Rudd Addition.

Built by: Utility Cont. Inc.

Booked 3-18-74 from IH 82

Proj. No. BHK B504005

on map



33rd St.

HYDRAULIC

HYDRAULIC

HYDRAULIC

CONSTRUCTION RECORD						SERVICE RECORD						
STATION	ELEVATION		Depth	MANHOLE	4-INCH "Y" BRANCHES		No. of Permit		House Number		DATE OF PERMITS	
	Ground	Grade			North West	South East	North West	South East	North West	South East	North West	South East
<b>Sub Main &amp; Ext SS # 23</b>												
0+00	134.0	129.76	9.2	0+00 Exist								
1+00	134.8	129.94	9.9									
2+00	135.0	125.12	9.9									
3+00												
	135.2	125.30	9.9	3+01 <sup>1</sup>								
4+00	135.4	125.48	9.9									
5+00												
	135.6	125.66	9.9	5+01 <sup>1</sup> 8" stub W								
6+00	136.0	125.84	10.2									
7+00	136.4	126.02	10.4									
8+00	136.6	126.20	10.4									
	136.7	126.27	10.4	8+41 <sup>2</sup>								
9+00	136.8	126.38	10.4									
10+00	137.0	126.56	10.4									
11+00	137.2	126.74	10.5									
	137.4	126.87	10.5	11+72 <sup>2</sup>								
12+00	137.5	126.92	10.6									
13+00	137.8	127.10	10.7									
14+00	138.1	127.28	10.8									
15+00												
	138.3	127.46	10.8	15+03 <sup>2</sup> 8" line W								
16+00	138.5	127.64	10.9									
17+00	138.5	127.82	10.7									
	138.7	127.92	10.8	17+53 <sup>2</sup>								
18+00	138.7	128.00	10.7									
	138.8	128.04	10.8	18+21 <sup>3</sup> 12" stub E								
19+00	138.7	128.18	10.5									
20+00	138.7	128.36	10.3									
	138.3	128.54	9.8	20+99 <sup>2</sup>								
21+00												
22+00	138.6	128.72	9.9									
23+00	138.6	128.90	9.7									
	138.8	129.08	9.7	23+99 <sup>2</sup>								
24+00												
25+00	139.0	129.26	9.7	0+0 8" stub E								
	139.2	129.42	9.8	25+88 E								
<b>Priv San Sew for Rudal Adn.</b>												
						3+49 M.H. 8" pipe line	C43421					2-11-74
<b>Line 1</b>												
0+00	138.3	128.79	9.5	0+00 Exist.								
1+00												
	137.6	out 129.23 in 129.43	8.4 8.2	1+12								
2+00	137.2	129.78	7.4		2+05.0		C75865		3737 N Hydraulic			12-20-79
3+00												
	137.0	130.21	6.8	3+08 <sup>2</sup>								
4+00	137.1	130.58	6.5									
5+00												
	137.5	131.00	6.5	5+06 <sup>2</sup>	6" stub SW		C43896		(Wholesale Supply) 3609 N Hydraulic			3-8-74
<b>Line 2</b>												
0+00	137.6	129.43	8.2	0+00 = line 1								
	137.7	out 129.60 in 129.80	8.0 7.8	0+57 <sup>2</sup>								
1+00	137.6	130.03	7.6									
2+00	137.5	130.43	7.1	2+20.4								
	137.6	130.76	7.2	2+83 <sup>2</sup>	2+29.5		C72481		1635 E 3724 N		Rep-5' below	6-21-79

South 2003 C2761 10/28/03 1635 E 3724 N (Remodel) A. E. Henning - Tap to W. side of MH 2783.5. D.L. said there also is Exist line Tapped to N.W. this MH. Did not appear to be active)

C43499 - 38" x 71" Hydraulic - 2 8" Lat. out of MH - for Sew 500' pt. 2/14/74 Rec. 192977 (Eng by Eng)