

LAT 11, MAIN 4, S.W. INTERCEPTOR

BUILT BY: MID-STATES CONST. CO.

BOOKED 4-5-74 FROM K-103

PROJ. NO. DBKL 572006

on map

Private San. Sew.

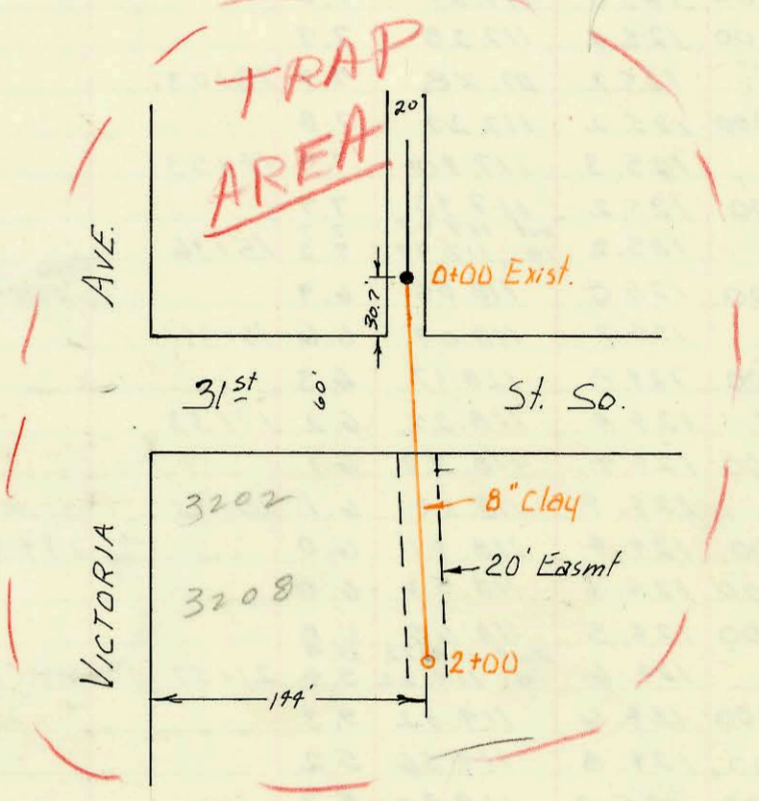
E. of Victoria & S. of 31st St So.

Built by W.B. Carter Const. Co.

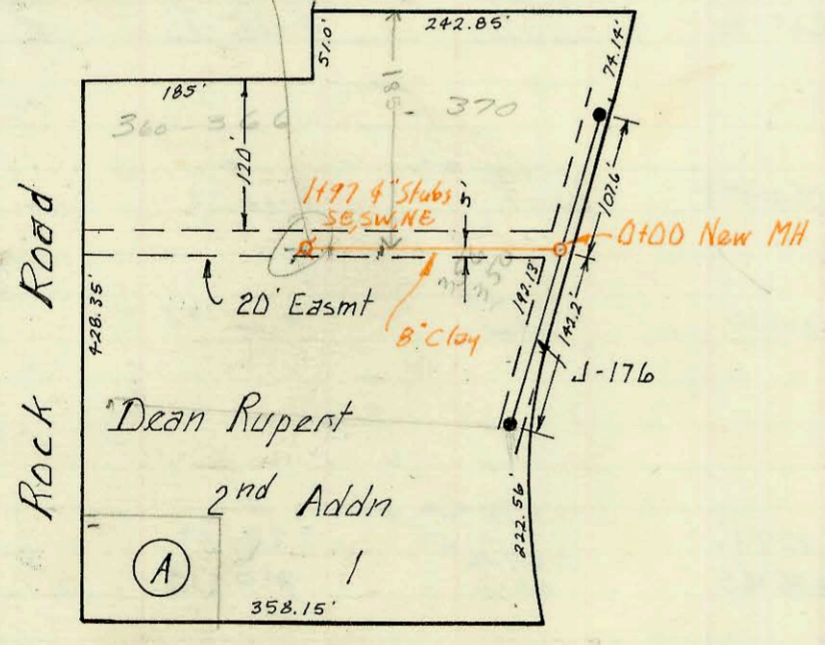
Booked 4-12-74 from 279-Y

Proj. No. BHKB504010

on map



Confirmed by
Dye Test 12-3-02
JMT 366 N Rock
AD Tiel into
MT 1797
8"



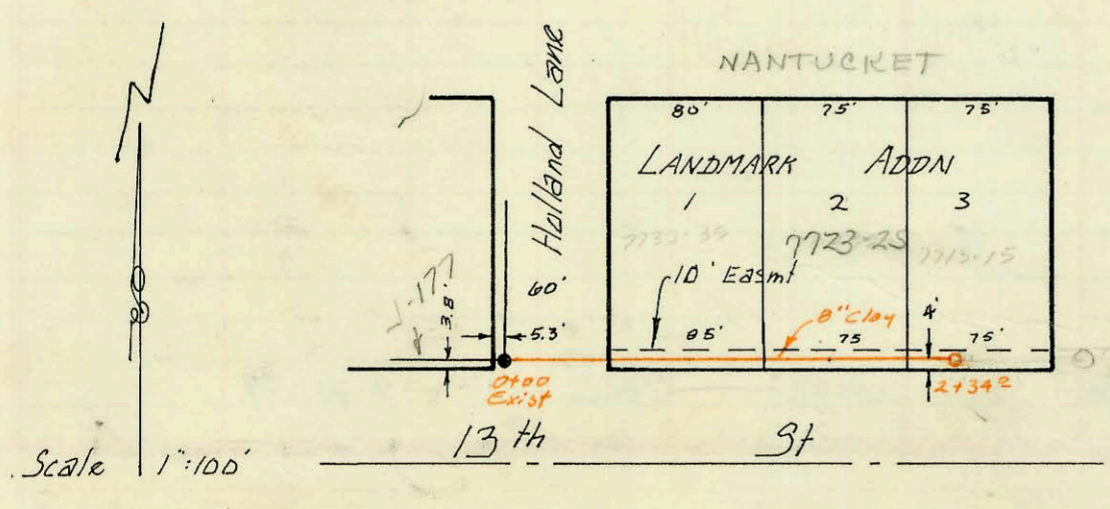
LAT 22 Main 9 WIS

Built by: W.B. Carter Const. Co.

Booked 5-3-74 from IH-75

Proj No DBKL 574007

on map



LAT 57 Westlink Sewer

Built by Utility Cont.

Booked 5-14-74 from K-105

Proj. No. DBKL 573006

on map

CONSTRUCTION RECORD						SERVICE RECORD						
STATION	ELEVATION		Depth	MANHOLE	4-INCH "Y" BRANCHES		No. of Permit		House Number		DATE OF PERMITS	
	Ground	Grade			North West	South East	North West	South East	North West	South East	North West	South East
LAT 11 Main 4 SWI												
Line 1												
0+00	123.9	115.88	8.0	0+00 Exist								
0+55 ^{beg}	123.9	115.99	7.9									
1+00	123.4	116.08	7.3		top 2+35.2		C44483		6700 (Summit)		4-12-74	
2+00	124.8	116.28	8.5		2+03 top (2+37.5)		C68958 C44398	354	6700 University		10-17-78	4-11-74
	124.5	116.38	8.1	2+50								
3+00	124.3	116.48	7.8		top 2+87		C51853		344 Howe Rd.		10-10-75	
4+00	124.5	116.68	7.8		3+85.6 ^{top}	4" 50R36 3+340 top	17473	93-19891-7	324 Howe Rd	335 S FAIRVIEW	12-15-86	7-23-93
5+00	124.9	116.88	8.0									
	out 125.1	116.89	8.2	5+05 ³								
	in 124.9	116.99	7.9	5+84 ^{9" stubs}								
	124.5	117.16	7.3	5+84 ^{9" stubs}			C60223	C46598	6701 W Maple	321 Fairview	3-7-77	9-11-74
Line 2												
0+00	124.9	116.99	7.9	0+00 = 5+05 ³	top 0+51 ³		C44754		6707 W Maple		5-6-74	
	125.8	117.11	8.7	0+60 ^{9" stub N.}			C61676		6715 W Maple		6-20-77	
Priv. San. Sew. E. of Victoria S. of 31st St. So.												
0+00	91.4	83.62	7.8	0+00 Exist								
1+00	89.7	84.02	5.7				(1+06.0)	C45205		3208 Victoria		6-7-74
	90.7	84.42	6.3	2+00			(1+16.1)	C45204		3202 Victoria		6-7-74
Lat 22 M9 WIS												
0+00	153.4	142.80	10.6	0+00	New MH over Exst Line	0+25 ^{top}		1346		350 ²⁴ Rock Rd		3-5-85
1+00	155.4	145.20	10.2									
	156.5	147.48	9.0	1+97 ²	4" stubs MH top Line 1 NE, SE, SW		C70332 C44848	C44765	310 N Rock Rd	340 No Rock Rd	5-26-74 5-13-74	5-7-74
				0+60			C44150	C51804	330 N Rock Rd	350 N Rock Rd	3-26-74 10-9-75	
Lat 57 Westlink Sew.												
0+00	153.5	147.50	6.0	0+00 Exist								
1+00	153.8	147.70	6.0		top 1+02 ³		C44027		7733-35 Westlink		3-17-74	
2+00	153.1	147.90	5.2		top 1+71 ⁶		C44026		7723-25 Westlink		3-17-74	
	153.1	147.97	5.1	2+34 ²	top 2+27 ⁶		C44025		7713-15 Westlink		3-17-74	

See Note on Map slide

C45200 - 366 No Rock Rd - J Spaulding - 5-23-74 (1+06.4)
 C44150 - 320 N. Rock Rd - new 8" main & 2 M.H. - Central Air Cond. 3/26/74
 2/26/74 C70334 - 310 N Rock Rd - Bob Scott - New Conn - (1+40 w of MH 0+00) BR