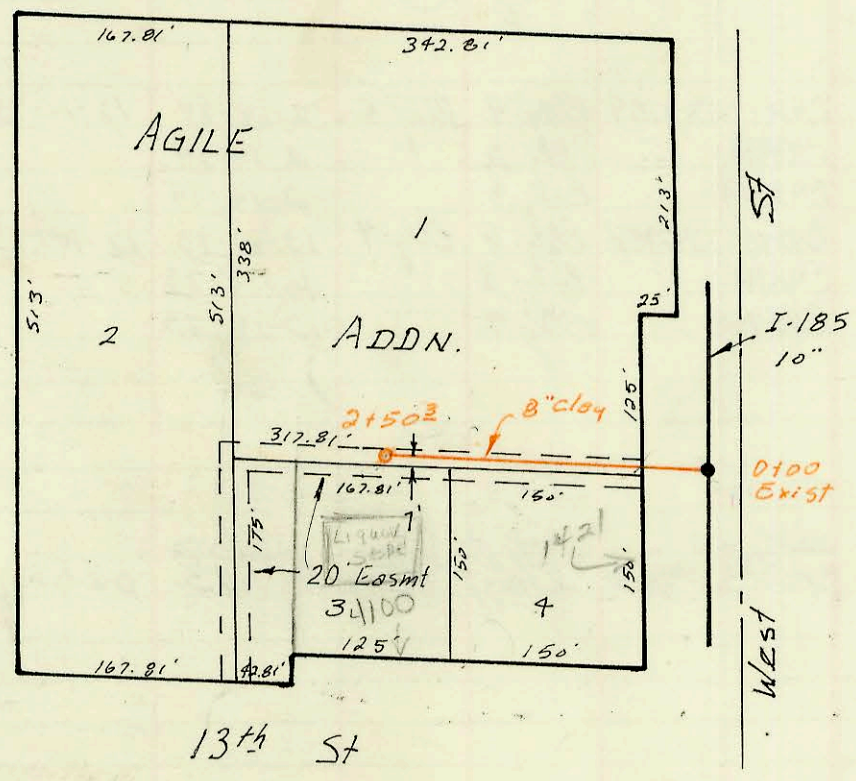
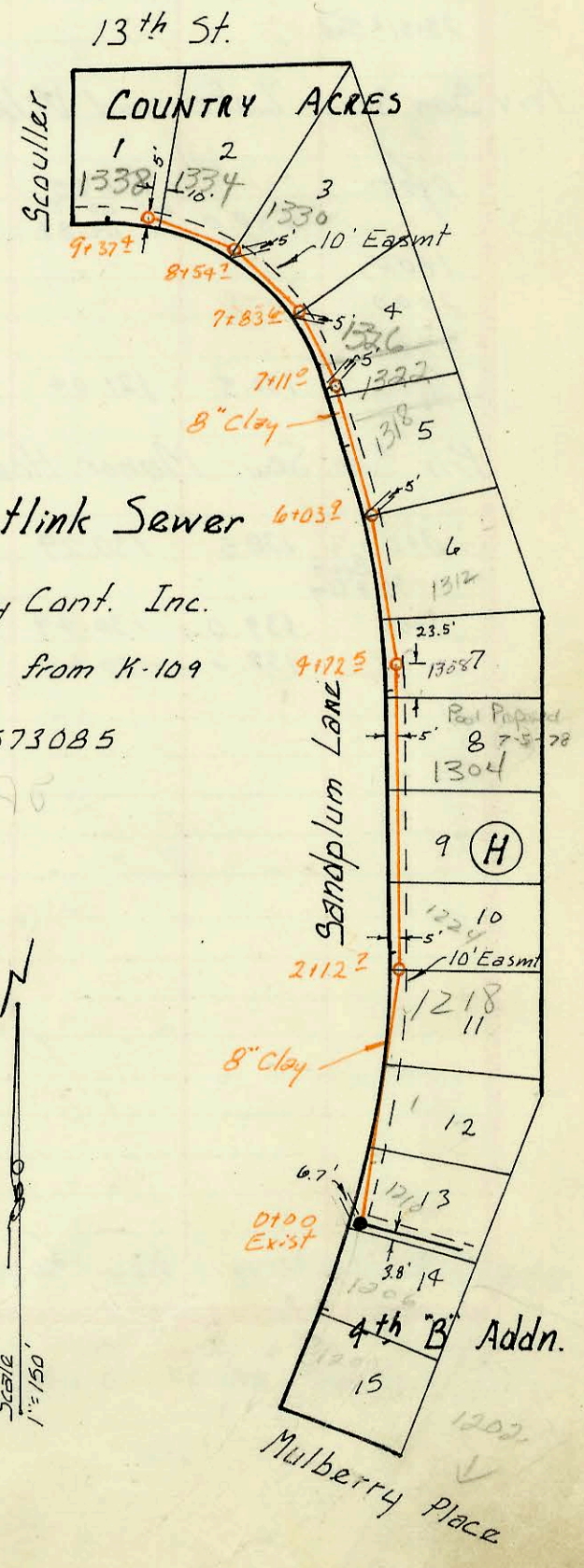


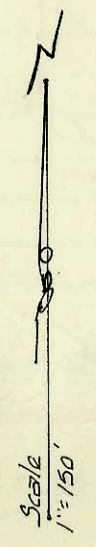
MAIN 18 W. I. S.
 Built by W.B. Carter Const. Co.
 Booked 5-7-74 from 264-Y
 Proj. No. DBKM573068
 ON MAP



Lot 206 Sub 5 SS # 22
 Built by Utility Cont. Inc.
 Booked 5-8-74 from K-111
 Proj. No. DBKL570024
 ON MAP



Lat 59 Westlink Sewer
 Built by Utility Cont. Inc.
 Booked 5-8-74 from K-109
 Proj. No. DBKL573085
 ON MAP



CONSTRUCTION RECORD						SERVICE RECORD						
STATION	ELEVATION		Depth	MANHOLE	4-INCH "Y" BRANCHES		No. of Permit		House Number		DATE OF PERMITS	
	Ground	Grade			North West	South East	North West	South East	North West	South East	North West	South East
Main 18 WIS												
0+00				0+00 Exist								
1+74 ⁹	157.5	145.37	12.1	1+74 ⁹								
2+00	159.2	145.41	13.8									
3+00	160.9	145.56	15.3									
4+00	162.3	145.71	16.6					C66227	919	Cricketbridge		5-4-78
	161.3	145.85	15.4	4+94 ²								
5+00	161.4	145.86	15.5									
6+00	159.8	146.06	13.7									
7+00	155.6	146.26	9.3									
	154.3	146.32	8.0	7+30 ⁹								
8+00	151.6	146.46	5.1									
9+00	151.8	146.66	5.1									
10+00	152.1	146.86	5.2									
	152.9	146.94	6.0	10+40 ⁸	4 PVC 40 66" 205T			98-16409-7	9050	(Laundry E. Lincoln Bldg)		7-29-92
11+00	153.8	147.15	6.6									
12+00	155.8	147.50	8.3									
13+00	157.8	147.85	10.0									
	158.6	out 148.10 in 148.10	10.5 10.6	13+45 ⁹								
14+00	160.1	148.30	11.8									
	160.5	out 148.35 in 148.45	12.1 12.0	14+14 ⁹	8" stub South							
15+00	160.5	148.75	11.7									
16+00	160.4	149.10	11.3									
17+00	161.9	149.45	12.5									
	162.1	out 149.57 in 149.61	12.5	17+18 ²	8" stub South							
18+00	162.4	149.80	12.6									
19+00	163.2	150.15	13.0									
20+00	163.9	150.50	13.4									
	163.8	150.79	13.0	20+58 ¹	18"-8" stub N. 8" stub E							
LAT 59 WESTLINK SEWER												
0+00	140.6	131.70	8.9	0+00 Exist	4" stub NE			243207	1210	Sandplum		1-29-74
1+00	141.5	132.20	9.3		top 1+35 ⁴			244793	1214	Sandplum		5-8-74
2+00	142.2	132.70	9.5		top 2+03 ⁴			244792	1218	Sandplum		5-8-74
	142.3	out 132.76 in 132.86	9.5	2+12 ²	top 2+17 ²			244748	1224	Sandplum		5-6-74
3+00	143.4	133.30	10.1		top 3+15 ²			244791	1300	Sandplum		5-8-74
4+00	143.3	133.80	9.5		top 4+25 ²			267158	1304	Sandplum		6-29-78
	143.7	out 133.14 in 133.24	9.5	4+72 ⁵	top 4+89.7			267151	1308	Sandplum		3-20-78
5+00	143.6	134.40	9.2		top 5+46 ³			245749	1312	Sandplum		7-16-74
6+00	143.8	out 134.90 in 135.00	8.9	6+03 ⁹	top 6+16 ²			247608	1318	Sandplum		12-2-74
7+00	143.9	out 135.67 in 135.77	8.2	7+11 ⁹	top 7+38			246837	1326	Sandplum		9-26-74
	143.9	out 136.12 in 136.22	7.7	7+83 ⁶	top 8+41 ⁴			246833	1330	Sandplum		9-26-74
8+00	144.0	out 136.57 in 136.67	7.4	8+54 ²	top 8+81 ⁸			246832	1334	Sandplum		9-26-74
9+00	144.7	137.06	7.6	9+37 ⁴	top 9+29 ⁴			246831	1338	Sandplum		9-26-74
Lat 206 Sub 5 SS # 22												
0+00	126.2	118.23	8.0	0+00 Exist								
1+00	127.0	118.73	8.3									
2+00	127.8	119.23	8.6									
	128.2	119.48	8.7	2+50 ²	4" SCH 40 2+37.3 Predeo			200 06545	1421	West		5-8-74
North Industrial Park Sen. Sew												
0+00	125.8	116.35	9.4	0+00 Lot A								
1+00	125.5	116.65	8.9									
2+00	125.4	116.95	8.4									
3+00	125.0	117.25	7.8									
	125.0	out 117.32 in 117.50	7.7 7.5	3+25 ⁹								
4+00	124.8	117.73	7.1									
5+00	124.7	118.02	6.7									
	124.5	118.30	6.2	5+90 ⁹	4" PVC 40 top 3+14.5			11-18547 252892	1021	E. 26 th St.		11-9-74 10/22/75
6+00	124.5	118.34	6.2									
7+00	124.4	118.74	5.7									
8+00	124.3	119.14	5.2									
	124.2	119.40	4.8	8+65 ⁹	top 8+50			2532 N. Washington				9-11-74

Continued from M-222

Top C49880-1322 Sandplum - 6-11-75 - Archer Conduff (6+92)