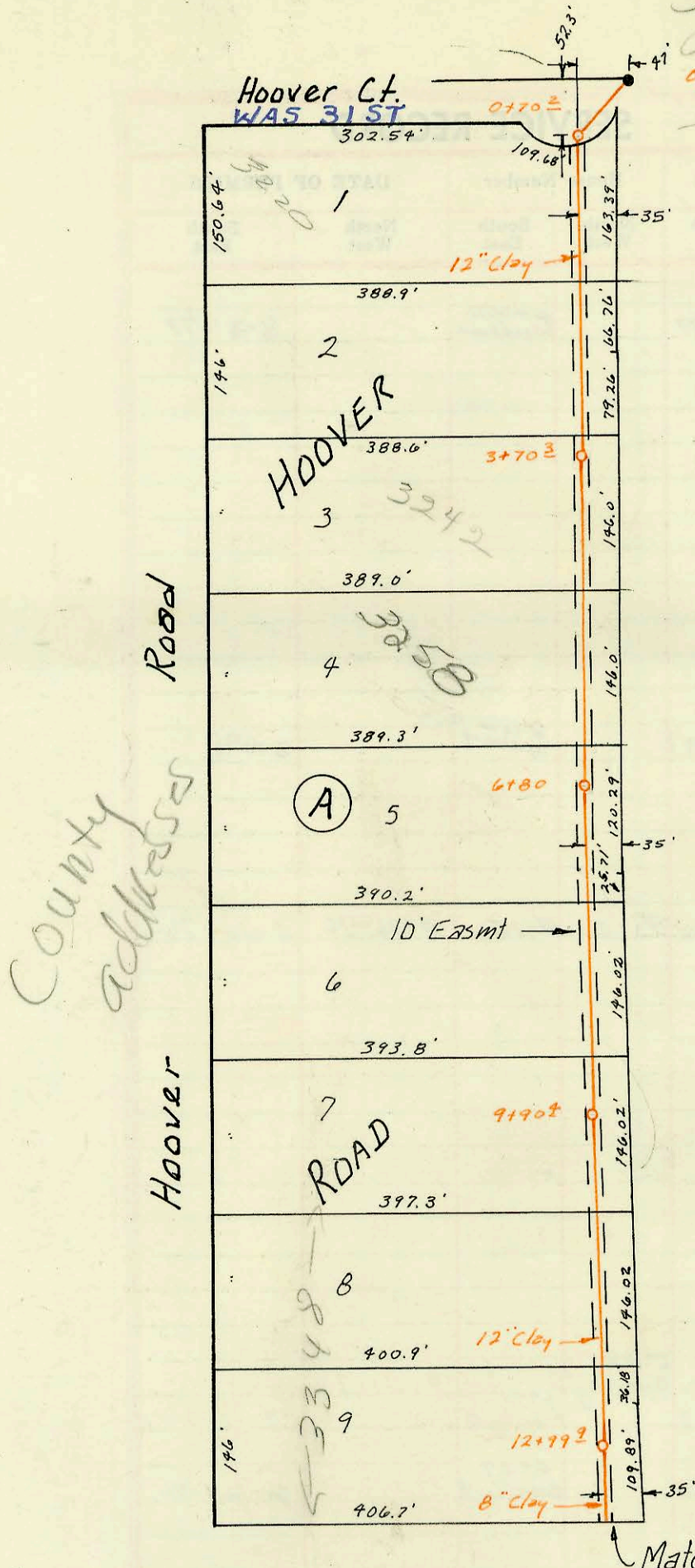
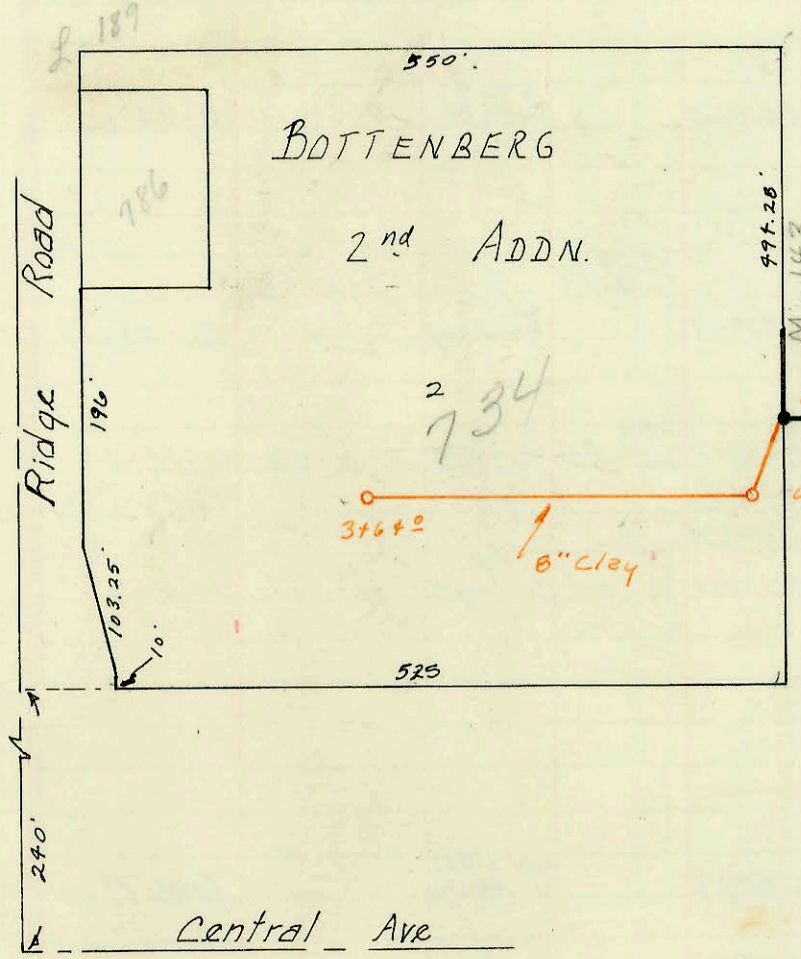
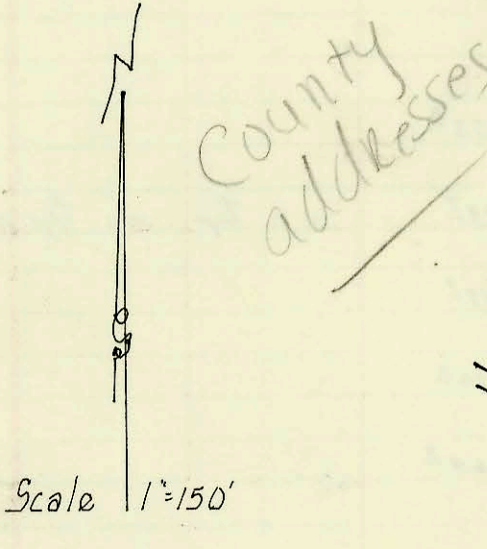
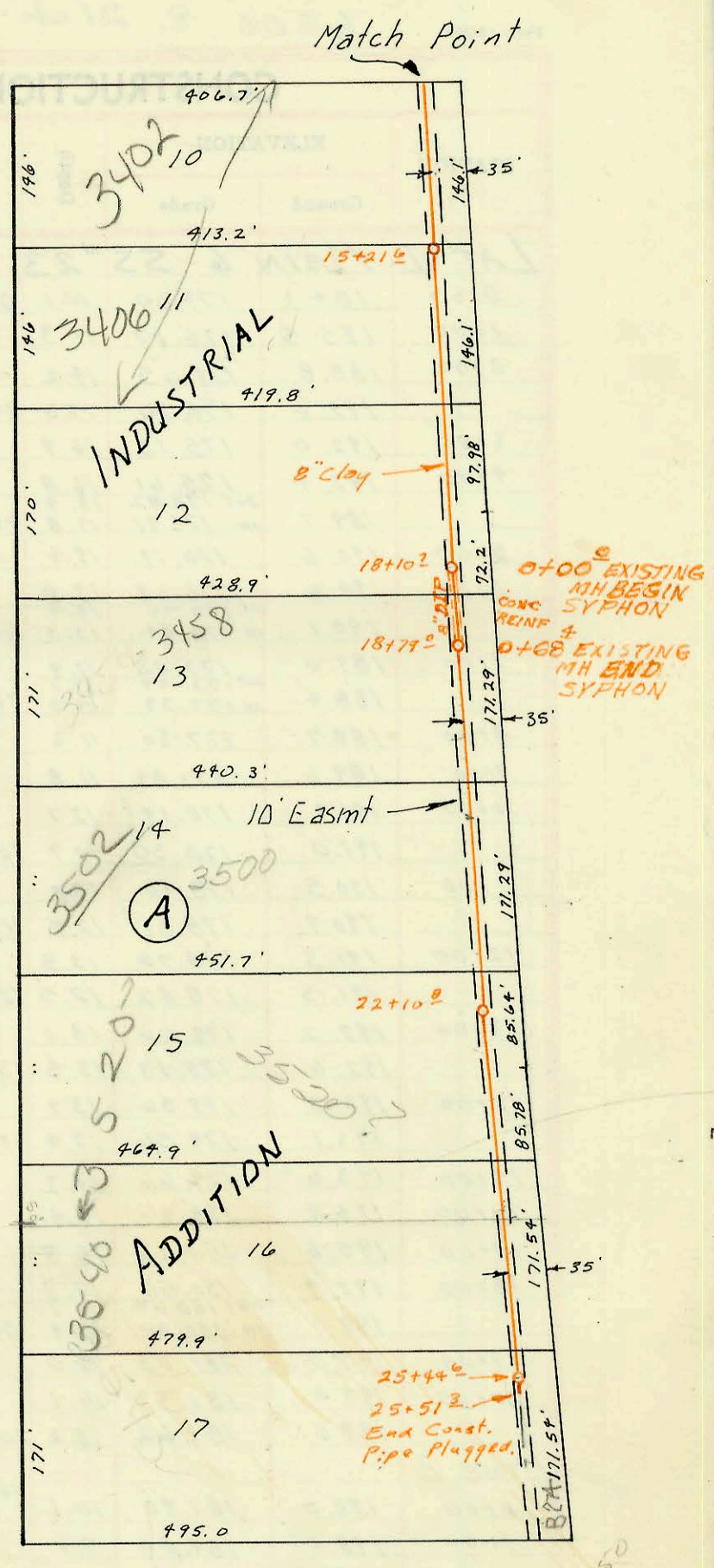


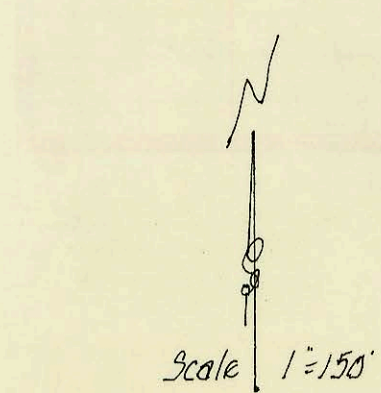
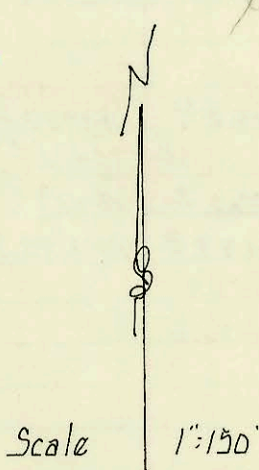
\$500 Spc fee 12 - Utility Contractors
Per # 186588- 12-12-73



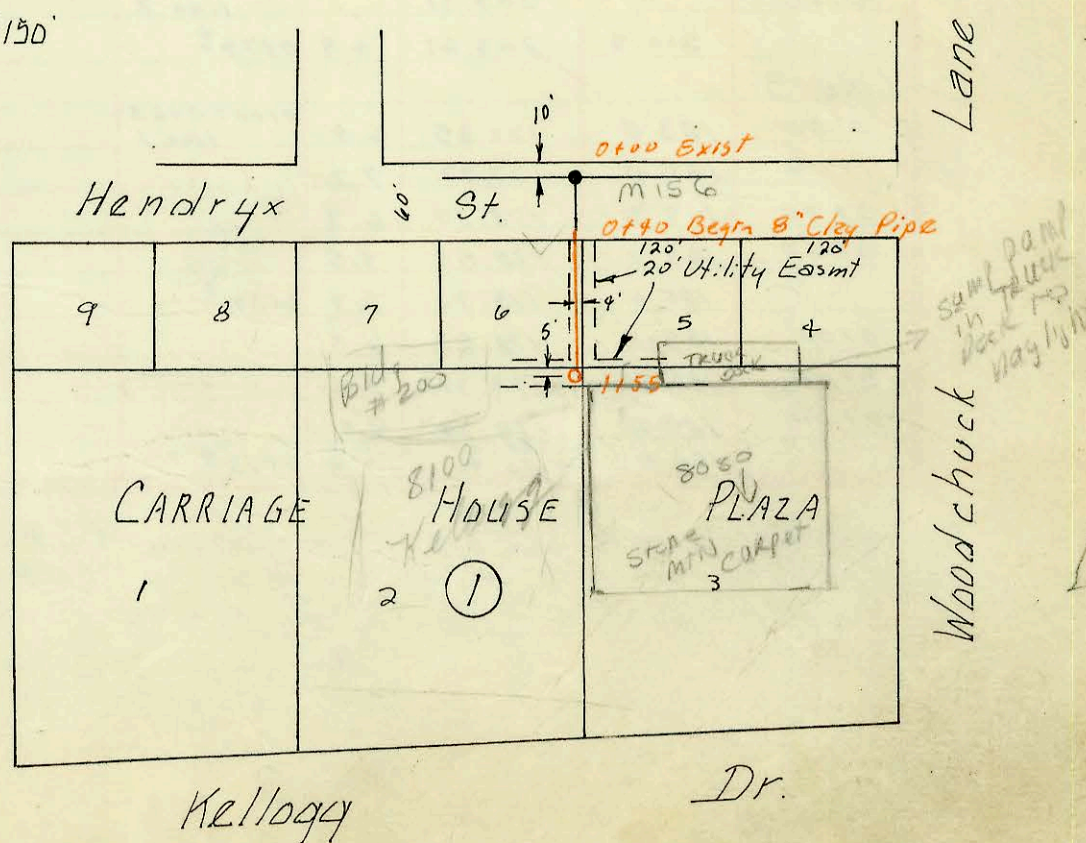
LAT 42 S.W.I.
 Built by Utility Cont. Inc.
 Booked 5-14-74 from SSJK #10
 Proj. No. BHKB503054
 SYPHON
 BUILT BY: UTILITY CONT. INC
 PROJ. N° DBKW705034
 BOOKED 11-11-75 FROM PLAN



Private San. Sew. Lakewood Village
 Built by Utility Contractors, Inc.
 Booked 5-17-74 from K-100
 Proj. No. BHKB503058



Private San. Sew. - Manor
 House Furniture
 Built by Utility Cont. Inc.
 Booked 5-17-74 from K-100
 Proj. No. DBKW704013



CONSTRUCTION RECORD						SERVICE RECORD						
STATION	ELEVATION		Depth	MANHOLE	4-INCH "Y" BRANCHES		No. of Permit		House Number		DATE OF PERMITS	
	Ground	Grade			North West	South East	North West	South East	North West	South East	North West	South East
Lot 42 SWI												
0+00	105.9	96.50	9.4	0+00 Exist								
	106.4	out 96.64 in 96.74	9.8 9.7	0+70 [±]								
1+00	106.8	96.80	10.0									
2+00	107.9	97.00	10.9		2+03.7 [±]				3220 S Hoover		9-22-80	
3+00	107.0	97.20	9.8									
	106.8	97.34	8.5	3+70 [±]		3+392.3		96155317 57671	32428 R Hoover		9-12-96 9-13-76	
4+00	106.7	97.40	8.3									
5+00	106.5	97.60	8.9									
6+00	106.2	97.80	8.4		6+34.4							
	106.0	97.96	8.0	6+80 [±]								
7+00	106.0	98.00	8.0									
8+00	108.5	98.20	10.3									
9+00	109.8	98.40	11.4									
	109.5	98.58	10.9	9+90 [±]								
10+00	109.4	98.60	10.8									
11+00	108.8	98.80	10.0									
12+00	108.2	99.00	9.2									
	108.4	out 99.20 in 99.37	9.2 9.0	12+99 [±]				3431	3348 Hoover		4-8-98	
13+00												
14+00	106.8	99.57	7.2									
15+00	105.2	99.77	5.4									
	105.5	99.81	5.7	15+21 [±]								
16+00	105.6	99.97	5.6		4" SCH 40 16+28.2			99-00650 2003-00946	3402 HOOPER 3406 HOOPER		9-13-77 4-10-03	
17+00	105.5	100.17	5.3									
18+00	105.6	100.37	5.2									
	105.6	100.39	5.2	18+10 [±] 0+00								
	105.6	100.53	5.1	18+79 [±] 0+68 [±]	4" PK 40 19+71.8			2078	3458 HOOPER		3-30-95	
19+00	105.6	100.57	5.0									
20+00	105.5	100.77	4.7		20+25.7 [±]			064534	3500 S Hoover		3/30/76	
21+00	105.5	100.97	4.5									
22+00	105.3	101.17	4.1									
	105.4	101.19	4.2	22+10 [±]								
23+00	105.8	101.37	4.4		23+86.6 [±]			12587	3520 Hoover		11-14-84	
24+00	105.7	101.57	4.1		24+34.6 [±]			11808	3540 Hoover		8-20-84	
25+00	105.5	101.77	3.7									
	105.5	101.86	3.6	25+44 [±]								
25+51 [±] End.												
Priv. San. Sew. Lakewood Village						734 N. Kelly Road						
0+00	130.0	116.25	13.3	0+00 Exist								
		out 116.71 in 119.84	10.2	0+62 [±]	4" Stab N	0+72.1		C43490 C42757	Bldg 4 Bldg 5		2-14-74	12-14-73
1+00					Way 1+62			C43488	Bldg 2		2-14-74	
2+00					"			C43489	Bldg 3		2-14-74	
3+00	130.5	121.04	9.5	3+64 [±]	Way 3+84.7	2+59.0		C42759 C42758	Bldg 6 Bldg 7		12-14-73	12-14-73
					4" Stab N			C42761	Bldg 8		12-14-73	
					4" Stab S			C42760	Bldg 9		12-14-73	
Priv. San. Sew. Manor House Furniture												
0+00	138.5	130.29	8.2	0+00 Exist								
0+10				Begin 8" Day	4" SCH 40 CITY 1750 TAP			2000 02157	8100 H 200 Kelllogg		4-3-73	
1+00	139.0	130.49	8.5		4" SCH 40			2000 02156	8100 H 200 Kelllogg		2-4-2000	
	138.6	130.60	8.0	1+55 [±]	8" Stab W	4" STUB		C42083 2000 02155	8100 H 200 Kelllogg		11-7-73	10-2-00

2000-00316

8100 W. Kelllogg - BTL Eye - Connected to existing claytile line 16' W of MH

3300 S. Hoover 02236 3-11-92 Top 216 1/2 N. of M.H. 4" SDR 35