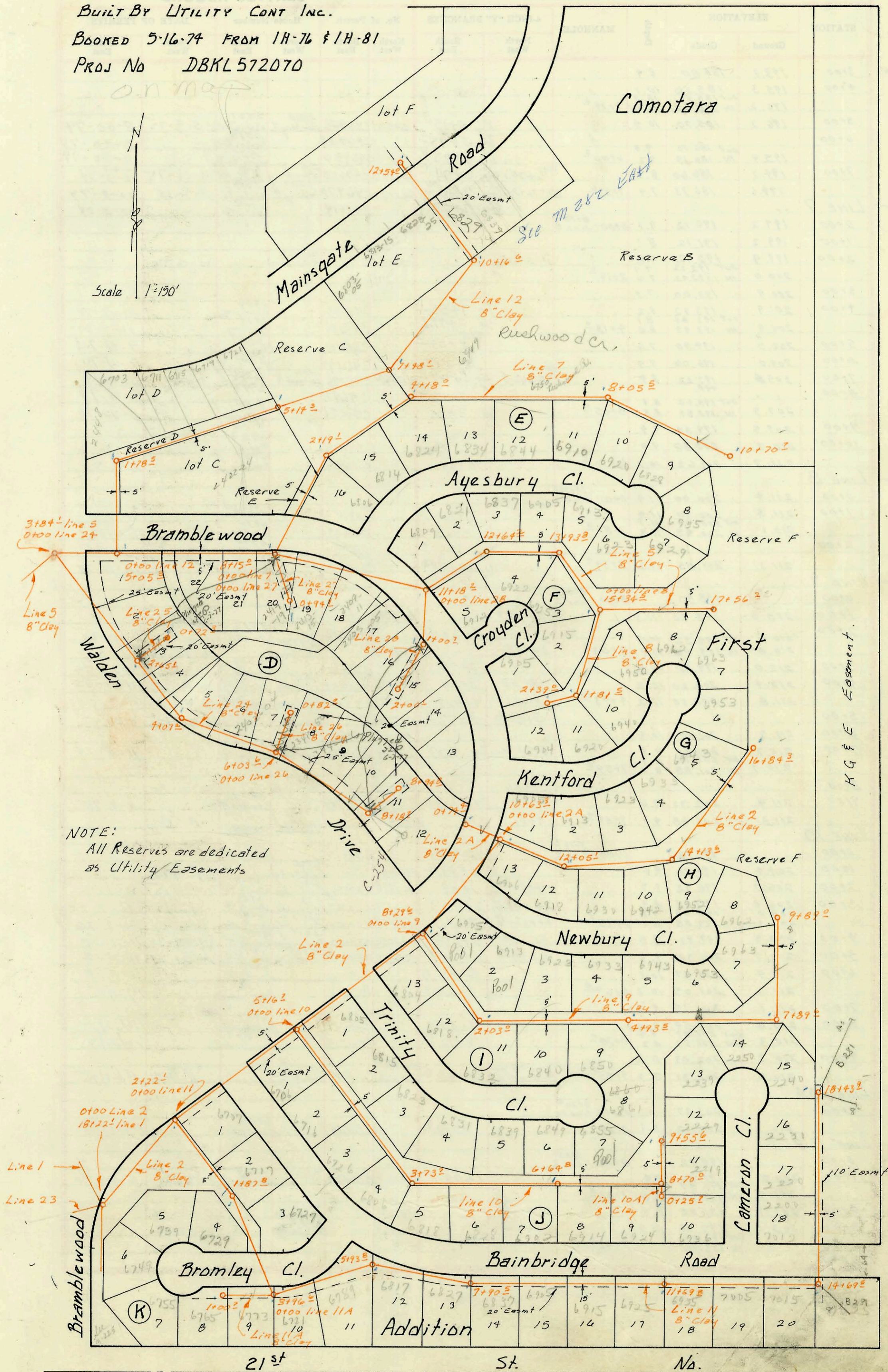


LAT 1 MAIN 6 SS #23  
BUILT BY UTILITY CONT INC.  
BOOKED 5-16-74 FROM 1H-76 & 1H-81  
PROJ No DBKL572070

O.N. map



Scale 1"=150'

NOTE:  
All Reserves are dedicated  
as Utility Easements

H G & E Easement.

21st St. No.

CONSTRUCTION RECORD

SERVICE RECORD

STATION	ELEVATION		Depth	MANHOLE	4-INCH "Y" BRANCHES		No. of Permit		House Number		DATE OF PERMITS	
	Ground	Grade			North West	South East	North West	South East	North West	South East	North West	South East
Line 3 Cont.												
7+00	190.8	181.00	9.8									
8+00	190.5	181.40	9.1									
9+00	189.5	181.80	7.7									
	189.1	182.01	7.1	9+26 <sup>±</sup>								
10+00	189.7	182.30	7.4									
11+00	190.7	182.70	8.0									
	191.1	183.00	8.1	11+39 <sup>±</sup>								
12+00	191.9	183.46	8.4									
13+00	193.2	184.26	8.9									
	193.5	184.77	8.7	13+60 <sup>±</sup>								
LINE 4												
0+00		181.50		0+00 = 6+73 <sup>±</sup>	0+49.0 <sup>±</sup>							
1+00	190.8	181.90	8.9									
	191.2	181.95	9.2									
	191.1	182.05	9.0	1+13 <sup>±</sup>								
2+00	191.9	182.40	9.5									
3+00	190.3	182.80	7.5									
	189.9	182.90	7.0									
	189.6	183.24	6.4	3+23 <sup>±</sup>								
4+00	191.4	183.54	7.9									
					4+28 <sup>±</sup>							
5+00					5+16.1 <sup>±</sup>	4+32 <sup>±</sup>						
	192.6	184.04	8.6	5+00 <sup>±</sup>	5+83 <sup>±</sup>							
6+00	193.2	184.44	8.8		6+53							
7+00	193.2	184.84	8.4									
	193.3	185.31	8.0	7+93 <sup>±</sup>								
8+00												
9+00	194.3	185.72	8.6		8+73	8+92						
	194.3	185.84	8.4									
	194.3	185.96	8.3	9+35 <sup>±</sup>								
10+00	194.9	186.22	8.7									
	194.7	186.57	8.2									
	194.7	186.61	8.1	10+71 <sup>±</sup>								
11+00	194.8	186.72	8.1									
12+00	196.4	187.12	9.3									
	195.3	187.52	7.6									
	195.3	187.75	7.6	13+31 <sup>±</sup>								
14+00	196.4	188.02	8.4									
	196.1	188.42	7.7									
	196.5	188.80	7.7									
	196.5	188.90	7.6	15+95 <sup>±</sup>								
16+00												
17+00	198.4	189.36	9.0									
18+00	199.1	189.80	9.3									
	199.2	190.00	9.2	18+46 <sup>±</sup>								
LINE 5												
0+00	189.8	178.68	11.1	0+00 = 6+24 <sup>±</sup>	0+29.0 <sup>±</sup>							
1+00	190.5	179.08	11.4									
2+00	191.6	179.48	12.1									
3+00	192.9	179.88	13.0									
	194.2	180.21	14.0									
	194.2	180.33	13.9	3+84 <sup>±</sup>								
4+00	194.3	180.38	13.9									
5+00												
	195.0	180.80	14.2									
	195.0	184.79	10.2	5+05 <sup>±</sup>								
6+00	195.5	186.36	9.1									
7+00	197.1	188.06	9.0									
8+00	198.9	189.76	9.1									
	199.1	190.04	9.1									
	199.1	192.23	8.9	8+15 <sup>±</sup>								
9+00	200.5	192.86	7.6									
10+00	202.1	193.58	8.5									
11+00	204.0	194.30	9.7									
	204.5	194.43	10.1									
	204.5	194.53	10.0	11+18 <sup>±</sup>								
12+00	205.5	195.35	10.1									
	206.3	195.97	10.3									
	206.3	196.07	10.2	12+64 <sup>±</sup>								
13+00	207.5	196.69	10.8									
	208.6	198.20	10.4									
	208.6	199.27	9.3	13+93 <sup>±</sup>								
14+00												
15+00	210.5	199.70	10.8									
	211.3	199.83	11.5									
	211.5	201.97	9.5	15+34 <sup>±</sup>								
16+00	212.6	203.04	9.6									
17+00	213.7	204.64	9.3									
	214.4	205.50	8.9	17+56 <sup>±</sup>								
LINE 6												
0+00		183.50		0+00 = 3+23 <sup>±</sup>								
1+00	190.2	184.21	6.0									
2+00												
	192.4	184.33	8.1									
	192.4	184.43	8.0	2+06 <sup>±</sup>								

Line 3 Cont.

LINE 4

LINE 5

LINE 6

C49431-2500 Barbury Cl. - 5-9-75

C49432-2526 " " " " "

C49433-2532 " " " " "

Top C49872-2501 Barbury Cl. - 6/11/75

C52358-6832 Brinley Cl. - 11-7-75

C52360-6850 " " " " "

C52361-6861 " " " " "

C52363-6849 " " " " "

C52365-6839 " " " " "

C46723 - 6837 eyesbury Cl. - 9-19-74 (12+95.9)

C46724 - 6821 " " " " (12+46.9)

C46725 - 6805 " " " " (13+46.9)

C46726 - 6913 " " " " (14+01.2)

C46727 - 6912 " " " " (11+81.7)

C46728 - 6922 " " " " (12+90.8)

C46729 - 6925 " " " " (15+14.5)

C46730 - 6905 " " " " (2+23.7)

C46732 - 6915 " " " " (0+81.5)