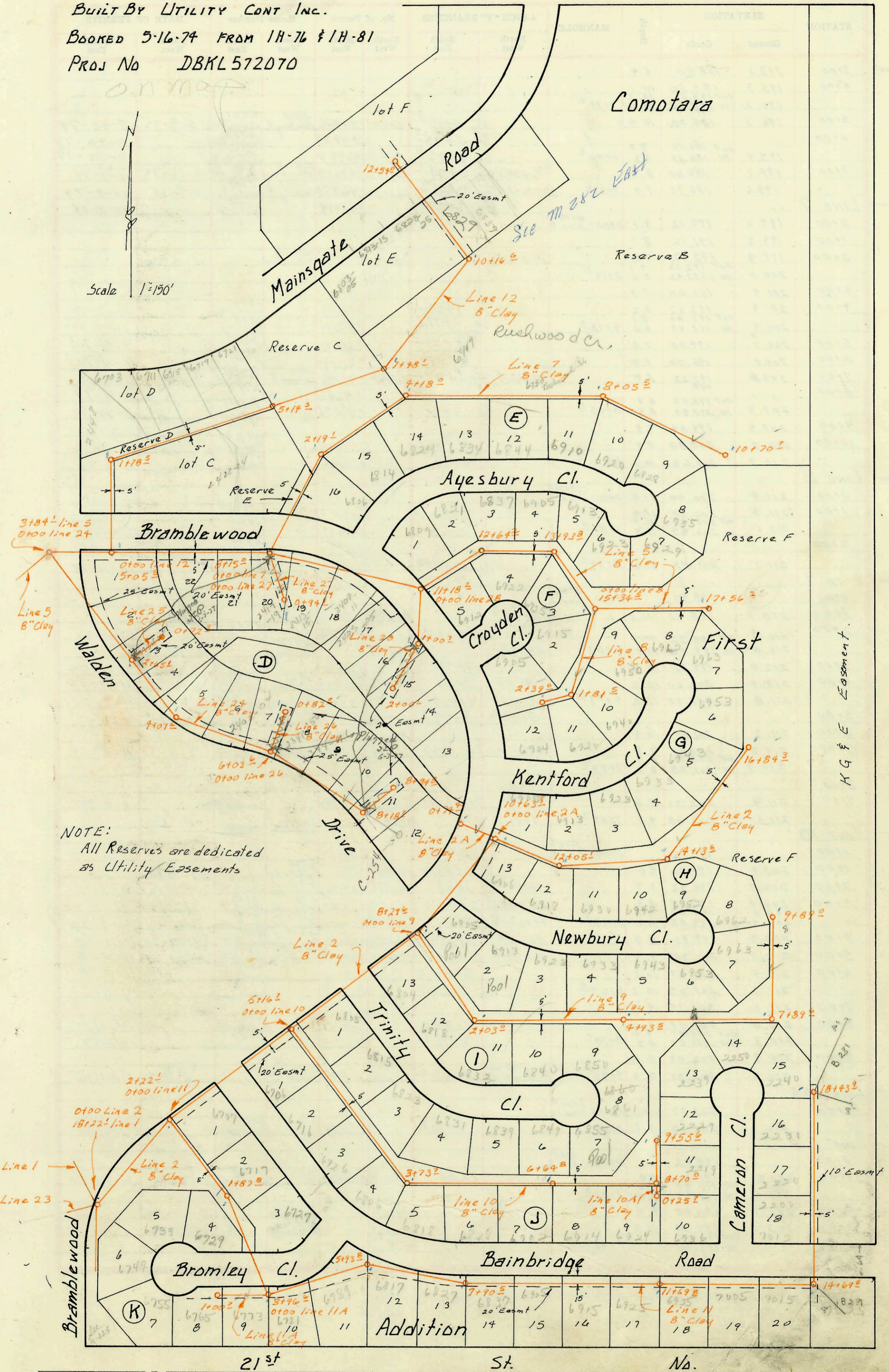


LAT 1 MAIN 6 SS #23
BUILT BY UTILITY CONT INC.
BOOKED 5-16-74 FROM 1H-76 & 1H-81
PROJ No DBKL572070

O.N. map



Scale 1"=150'

NOTE:
All Reserves are dedicated
as Utility Easements

H G & E Easement.

21st St. No.

CONSTRUCTION RECORD

SERVICE RECORD

line 6 Cont.

STATION	ELEVATION		Depth	MANHOLE	4-INCH "Y" BRANCHES		No. of Permit		House Number		DATE OF PERMITS	
	Ground	Grade			North West	South East	North West	South East	North West	South East	North West	South East
3+00	193.7	184.80	8.9									
4+00	195.3	185.20	10.1									
	196.2	out 185.50 IN 185.60	10.7	4+77 ²								
5+00	196.2	185.70	10.5									
6+00	195.9	out 186.10 IN 186.19	9.8	6+00 ³								
7+00	194.7	186.60	8.1									
	194.6	186.73	7.9	7+37 ⁶								
LINE 7												
0+00	199.2	190.12	9.1	0+00 = 8+15 ² line 5								
1+00	199.2	191.12	8.1									
2+00	199.9	192.12	7.8									
	200.0	out 192.32 IN 192.42	7.7	2+19 ¹	2+05.8						10-13-76	
3+00	200.9	193.00	7.9									
4+00	201.9	193.72	8.2									
	201.9	out 193.84 IN 193.94	8.1	4+18 ⁰								
5+00	202.5	194.90	7.6									
6+00	203.0	196.06	7.9									
7+00	205.6	197.22	8.4									
8+00	207.3	out 198.44 IN 198.54	8.9	8+05 ²								
9+00	209.5	199.64	9.9									
10+00	210.7	200.80	9.9									
	211.7	201.62	10.1	10+70 ²								
LINE 8												
0+00	211.4	200.00	11.4	0+00 = 15+34 ² line 5								
1+00	211.8	200.90	11.4									
	212.1	out 200.73 IN 200.83	11.7	1+81 ²								
2+00	211.3	201.05	10.2	2+39 ²								
LINE 9												
0+00		198.50		0+00 = 8+29 ² line 2								
1+00	210.0	198.90	11.1									
2+00	210.0	out 199.32 IN 199.42	11.3	2+03 ²	2+49 ²							
3+00	212.0	199.80	12.2									
4+00	212.4	200.20	12.2									
	211.8	200.58	11.2	4+93 ²								
5+00												
6+00	211.3	201.00	10.3									
7+00	210.7	201.40	9.3									
	210.7	out 201.78 IN 201.88	8.9	7+89 ²								
8+00												
9+00	211.9	202.32	9.6									
	211.8	202.68	9.1	9+89 ²								
LINE 10												
0+00		193.50		0+00 = 5+16 ² line 2								
1+00	204.4	194.96	9.4									
2+00	205.7	196.42	9.3									
3+00	206.8	197.88	8.9									
	208.0	198.93	9.1									
	207.9	199.88	8.0	3+73 ²								
4+00	208.3	199.99	8.3									
5+00	209.7	200.39	9.3									
6+00	210.9	200.79	10.1									
	211.3	201.65	10.2	6+64 ²								
7+00	211.1	201.19	9.9									
8+00	210.6	201.59	9.0									
	210.3	out 201.87 IN 201.97	8.4	8+70 ²								
9+00	210.3	202.09	8.2									
	210.5	202.31	8.2	9+55 ²								
LINE 10A												
0+00		201.97		0+00 = 8+70 ² line 10								
	210.2	202.12	8.1	0+25 ²								
LINE 11												
0+00		190.42		0+00 = 2+22 ² line 2								
1+00	200.51	191.04	9.4									
	201.2	out 191.57 IN 191.67	9.7	1+87 ²								
2+00	201.7	191.80	9.9									
3+00	203.0	192.44	10.6									
		out 193.06 IN 193.16		3+96 ²								
4+00												

6861 Trinity Cr. 91-31791-7 replaced 10'-20' from M.H. 4" sct 40 PVC

