

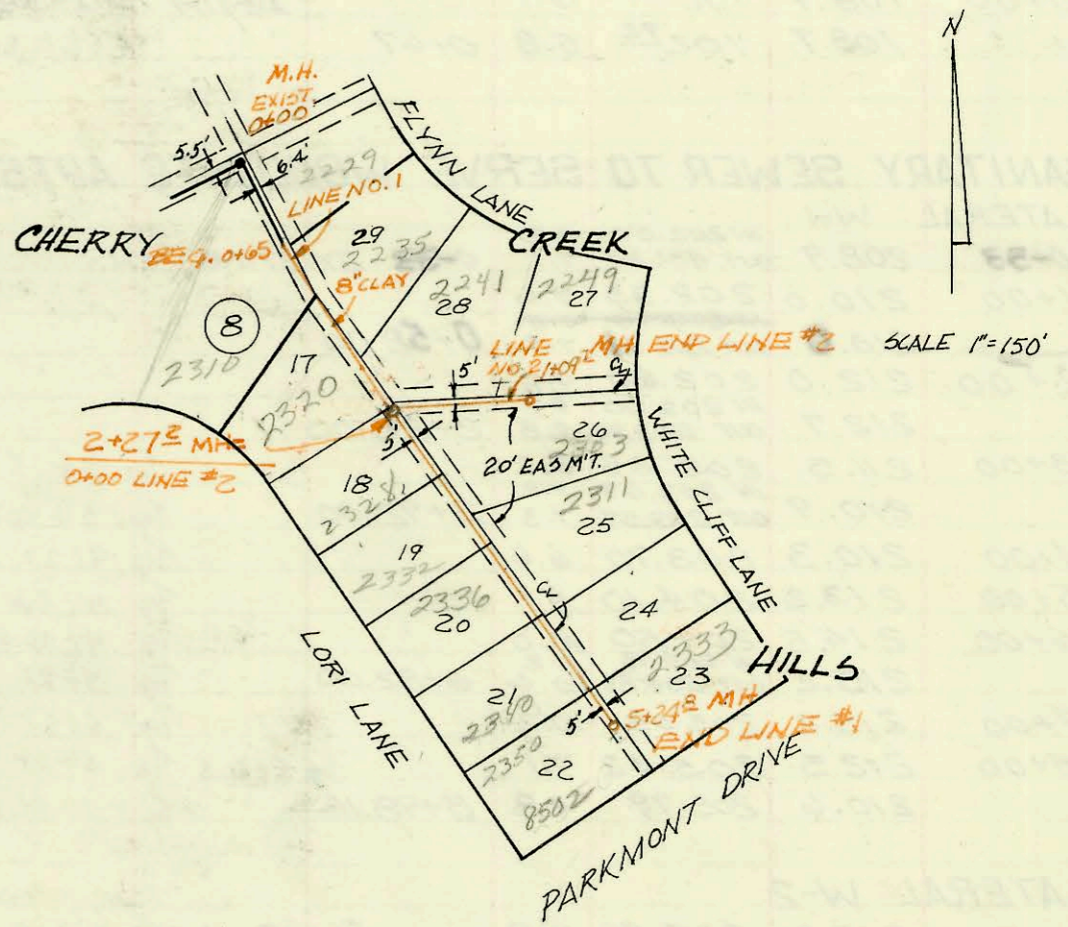
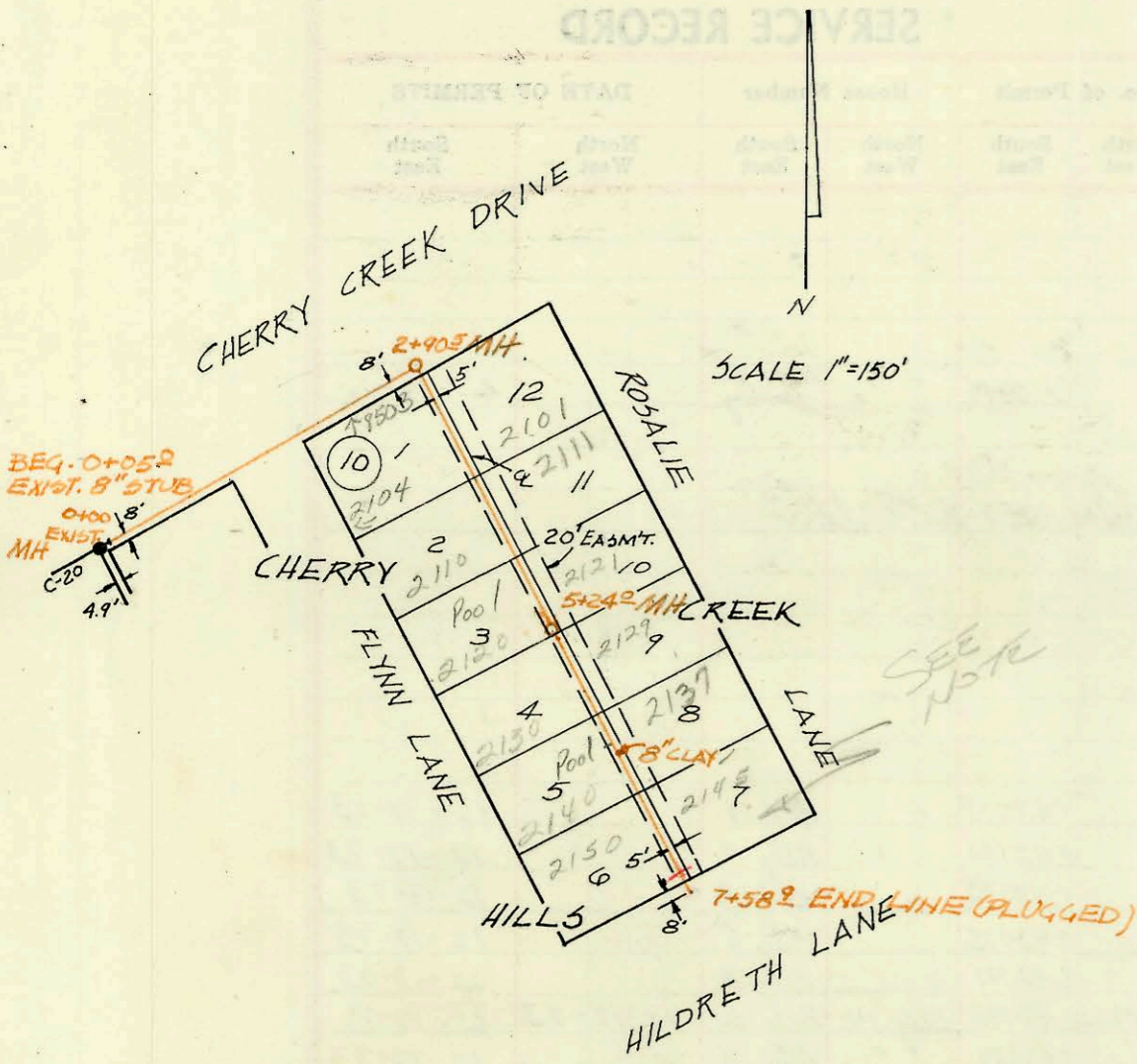
LAT. 7, MAIN 17, W.I.S.

BUILT BY W.B. CARTER CONST. CO., INC.

BOOKED 6-13-74 FROM 4-1

PROJ. NO. DBKL573018

ON MAP



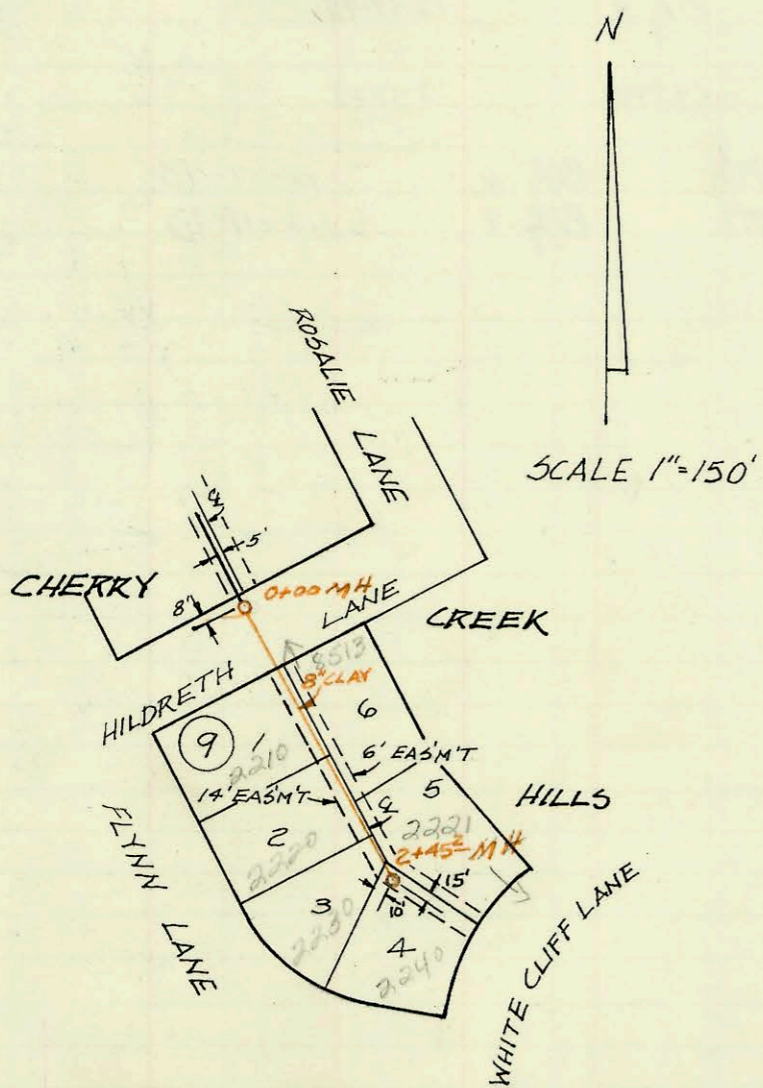
LAT. 8, MAIN 17 W.I.S.

BUILT BY W.B. CARTER CONST. CO., INC.

BOOKED 6-13-74 FROM 4-1

PROJ. NO. DBKL573019

ON MAP



LAT. 9, MAIN 17 W.I.S.

BUILT BY W. B. CARTER CONST. CO., INC.

BOOKED 6-13-74 FROM 4-1

PROJ. NO. DBKL573020

ON MAP

CONSTRUCTION RECORD

SERVICE RECORD

STATION	ELEVATION		Depth	MANHOLE	4-INCH "Y" BRANCHES		No. of Permit		House Number		DATE OF PERMITS	
	Ground	Grade			North West	South East	North West	South East	North West	South East	North West	South East
LAT. 8, MAIN 17, W.I.S.												
0+00	172.4	162.88	9.5	0+00 EXIST.								
1+00	174.6	164.48	10.2		top 3+23.5		C51996		2101 Rosalie		10-17-75	
2+00	176.5	166.08	10.4		top 3+68.5		C51822		2103 Rosalie		10-12-75	
	178.0	OUT 167.52 IN 167.62	10.4	2+90 ^E	top 3+60 ^I		C50027		2104 Flynn 8503 Ching Park 2110		6-21-74	
3+00					top 4+35 ^I	4+15 ^E	C47369	C47528	2111 Rosalie	11-14-74	11-26-74	
4+00	178.8	168.06	10.7		top 5+06 ^I	4+88	C47370	C56028	2120 Rosalie	11-14-74	6-21-76	
5+00	179.8	168.46	11.4		top 5+75 ^I	5+15	C49218		2129 Rosalie		7-3-79	
	180.0	168.56	11.5	5+24 ^E	top 6+25 ^I	6+26 ^I	C47407	C47567	2130 Rosalie	11-18-74	11-26-74	
6+00	180.7	168.86	11.8		top 6+25 ^I	7+13.8	C47408	C51617	2145 Rosalie	11-18-74	9-30-75	
7+00	181.2	169.26	11.9		top 6+97 ^I		C48561		2150 Flynn		3-5-75	
7+58 ^{END CONST.}	181.0	169.50	11.5									
LAT. 7, MAIN 17, W.I.S.												
LINE #1												
0+00		166.50		0+00 EXIST.	top 1+15.2		C51965		2310 Flynn		10-17-75	
0+65					top 1+09.2		C52506		2320 Flynn		7/24/75	
1+00	180.2	167.14	13.6		top 2+02.4		C54624		2328 Flynn		4-5-76	
2+00	181.6	168.98	12.6		top 2+69.2	2+90 ^E	C63724	C48389	2330 Flynn 2332 Flynn 2336 Flynn	2303 White Cliff	10-26-77	2-14-75
	182.0	OUT 169.41 IN 173.00	12.7	2+27 ^E	top 3+50		C51956		2336 Flynn	2311 White Cliff	10-17-75	
3+00	183.1	173.77	9.3		top 4+06.2	4+16.2	C50293	C50292	2340 Flynn	2323 White Cliff	7-11-75	7-11-75
4+00	183.6	174.77	8.8		top 4+69.8	4+50	C51982	C55594	2340 Flynn	2323 White Cliff	10-17-75	5-24-76
5+00	184.0	175.77	8.2		top 4+19.8	5+14	C51314	C51315	2350 Flynn	2335 White Cliff	10-26-61	9-12-75
5+24 ^{END CONST.}	184.0	175.97	8.0	5+24 ^E								
LINE #2												
0+00	182.2	173.00	9.2	0+00	top 0+51		C48562		2341 Flynn		8-5-75	
1+00		174.00			top 0+85		C49173		2349 Flynn		4-22-75	
1+09 ^{END CONST.}	180.6	174.10	6.5	1+09 ^I								
LAT. 9, MAIN 17, W.I.S.												
0+00	180.0	IN 169.60	11.4	0+00	top 1+04 ^I	1+10 ^E	C46424	C46423	2210 Flynn	8513 White Cliff	8/30/74	8/30/74
1+00	181.6	170.0	11.6		top 1+66 ^I		C46427		2220 Flynn		8/30/74	
2+00	182.2	170.4	11.8		top 2+30 ^I	2+08 ^E	C46429	C46435	2230 Flynn	2221 White Cliff	8/30/74	8/30/74
2+45 ^{END CONST.}	182.4	OUT 170.58	11.8	2+45 ^E	MH Top		C46431		2240 Flynn		8/30/74	