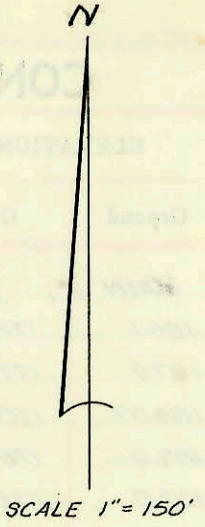
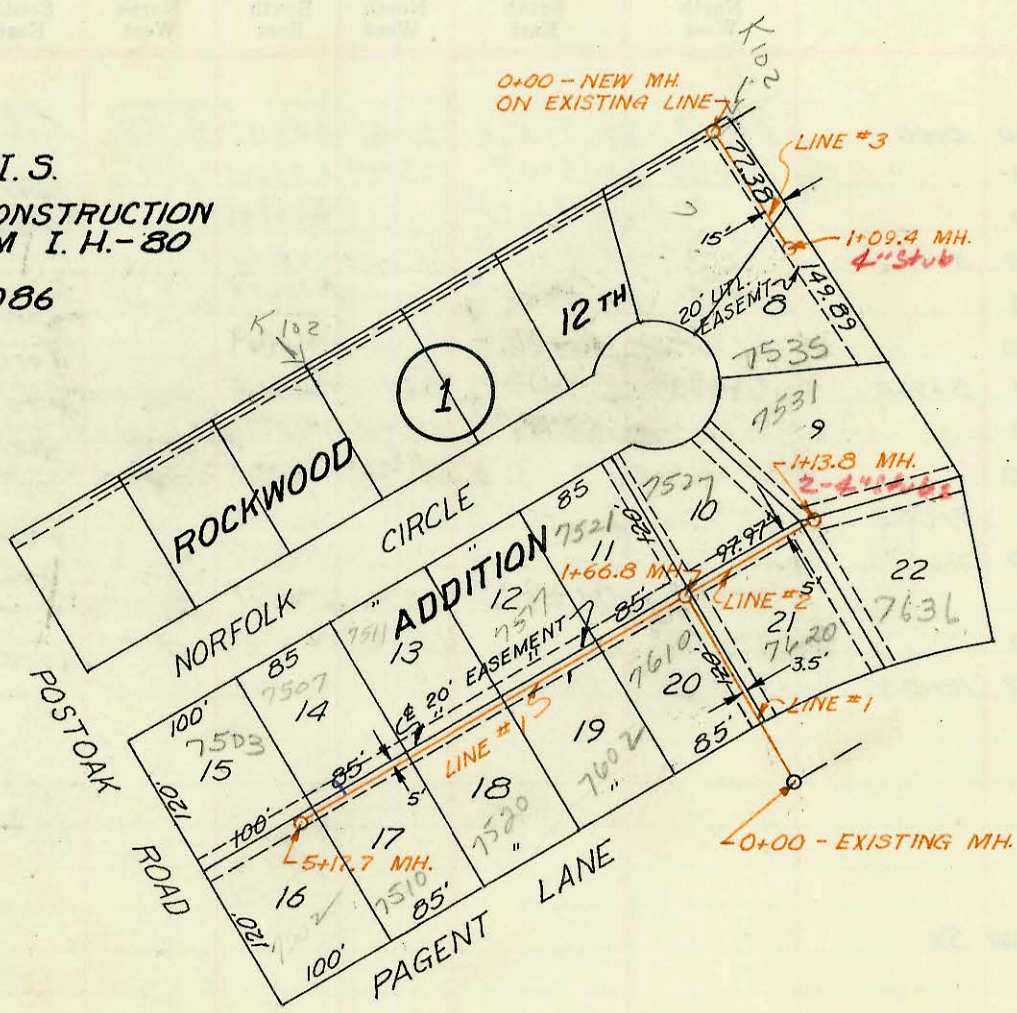
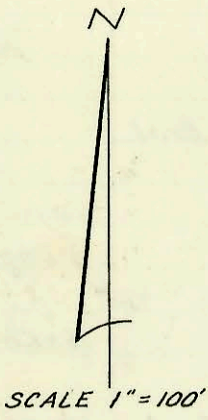
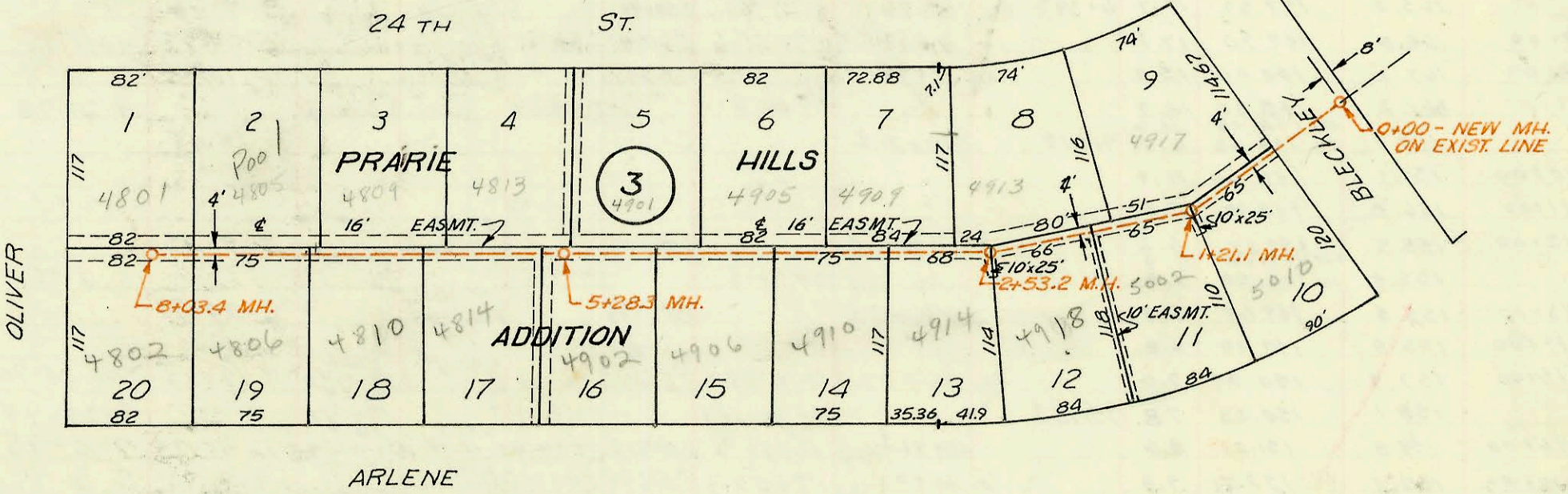


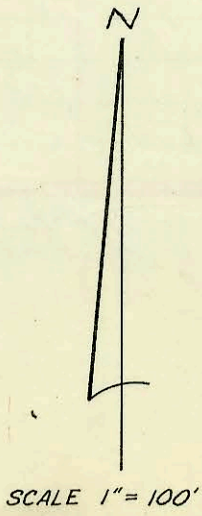
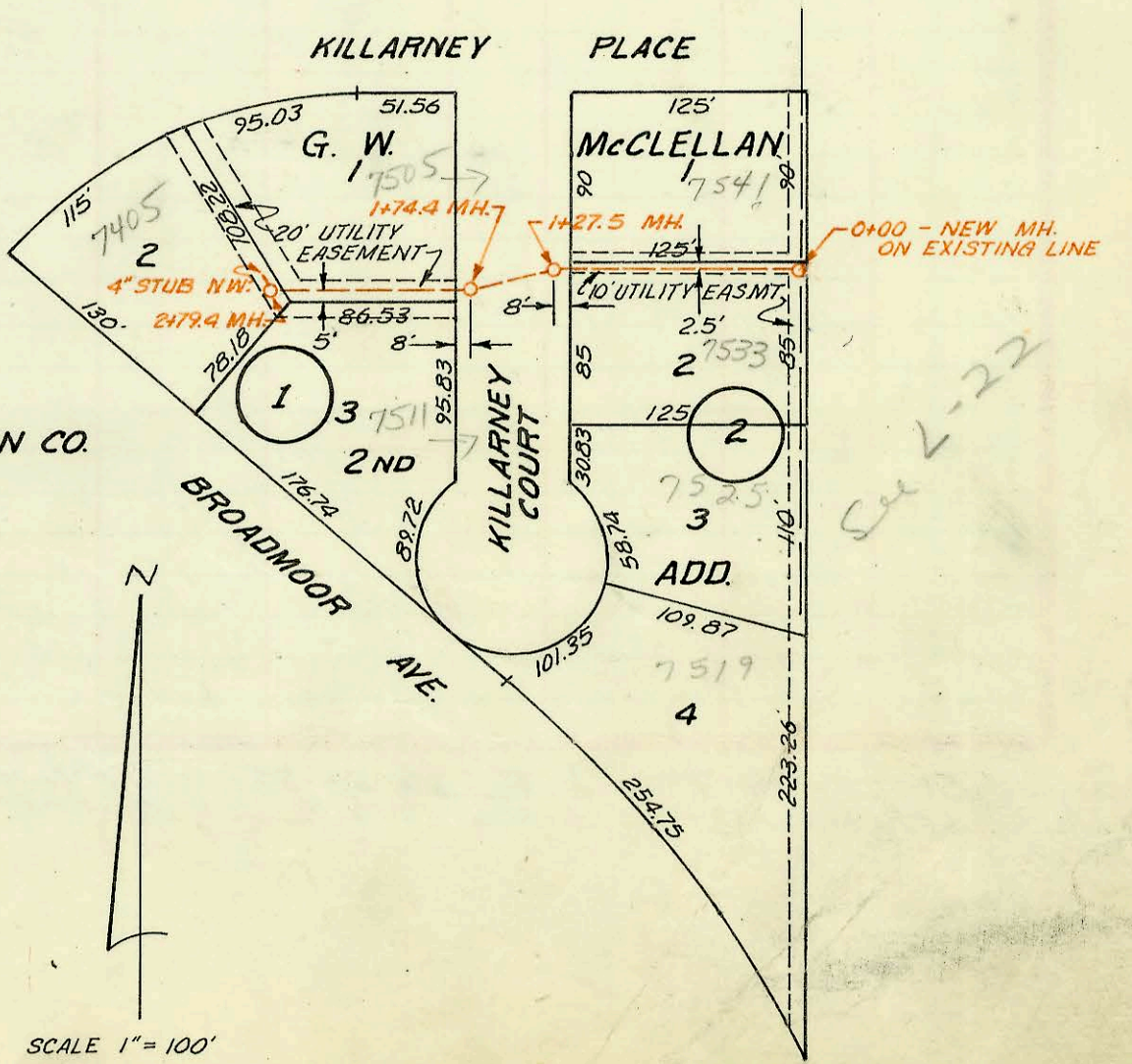
LAT. 32, MAIN 5A, W. I. S.
BUILT BY W. B. CARTER CONSTRUCTION
CO., INC. - BOOKED FROM I. H. - 80
8-14-74
PROJ. NO. DBKL 573086



LAT. 3, MAIN 2, NO. 23
BUILT BY UTILITY CONTRACTORS INC.
BOOKED FROM I. H. 81 - 8-14-74
PROJ. NO. DBKL 574011



LAT. 20, MAIN 12, W. I. S.
BUILT BY MID-STATES CONSTRUCTION CO.
BOOKED FROM Y-279 8-15-74
PROJ. NO. DBKL 574009



See L-22

CONSTRUCTION RECORD						SERVICE RECORD						
STATION	ELEVATION		Depth	MANHOLE	4-INCH "Y" BRANCHES		No. of Permit		House Number		DATE OF PERMITS	
	Ground	Grade			North West	South East	North West	South East	North West	South East	North West	South East
LAT. 32, MAIN 5A, W. I. S.												
LINE #1												
0+00	164.9	156.40	8.50	0+00 - EXISTING								
1+00	165.2 IN-166.3 OUT-166.3	156.60 157.00 156.73	8.60 9.30 9.57		2+15.2		C50319		7620			
2+00	166.4	157.10	9.30		2+13.1		C63830		7521		11-2-77	
3+00	167.4	157.40	10.00		2+78.8		C51706		7619			10-6-75
4+00	168.4	157.70	10.70		3+77.7		C46361		7602			8-27-74
5+00	170.4	158.00	12.40		4+77.7		C57909		7511		9-28-76	8-27-74
	170.7	158.05	12.65	5+17.7			C46360		7520		9-28-76	8-27-74
							C57908		7507		9-28-76	8-27-74
							C46359		7503		2-17-76	6-25-76
							C53760		7502			
LINE #2												
0+00	166.3	156.83	9.47	0+00								
1+00	166.0	157.03	8.97		0+43.8	0+60	C68816	C50319	7527	7620	10-10-78	7-14-75
	165.8	157.06	8.74	1+13.8			57578	C53759	7531	7636	9-8-76	2-17-76
LINE #3												
	168.2	158.00	10.20	0+00								
1+00	167.8	158.30	9.50									
	167.8	158.33	9.47	1+09.4		4" MH, Stub		C71708		7535		5-11-79
LAT. 3, MAIN 2, S.S. 23												
0+00	182.5	174.50	8.00	0+00								
1+00	183.0 IN-183.7 OUT-184.0	175.20 175.43 175.33	7.80 8.27 8.67		0+73.4			C46617		5010		9-12-74
2+00	183.8 IN-184.5 OUT-184.5	175.59 175.69 175.69	8.21 8.81 8.81		1+47.1	1+35		C46616		5002		9-12-74
3+00	185.8	175.79	10.01		1+74.4	2+00	C45514	C46619	4913 E.	4918	7-1-74	9-12-74
4+00	187.4	175.99	11.41		2+90.8	2+71.2	C45515	C46618	4917 E.	4914	7-1-74	9-12-74
5+00	186.8	176.19	10.61		3+90.8	3+39.8	C45521	C45888	4915 E.	4915	7-1-74	7-24-74
	186.9	176.24	10.66	5+28.3	4+67.3	4+26.3	C45516	C45887	4901 E.	4906	5-29-74	7-24-74
6+00	186.0	176.39	9.61		4+77.7			C45520	4902	4902		7-1-74
7+00	184.4	176.59	7.81		5+38.3	5+04.3	C45522	C45525	4813 E.	4814	7-1-74	7-1-74
8+00	182.4	176.79	5.61	8+03.4	6+35.4	6+25.8	C45518	C45523	4809 E.	4810	7-1-74	7-1-74
					6+95.2	7+20.8	C45517	C45586	4805 E.	4806	7-1-74	7-3-74
					4" Stub N.	4" Stub S.	C45585	C45524	4801 E.	4802	7-3-74	7-1-74
LAT. 20, MAIN 12, W. I. S.												
0+00	172.1	160.46	11.64	0+00								
1+00	170.8 IN-168.1 OUT-168.3 IN-168.6 OUT-168.6	160.66 160.72 160.72 160.81 160.81	10.14 7.38 7.58 7.79 7.79									
2+00	170.4	160.86	9.54		2+62.6	2+51.8	C46873		7511	7505	9-30-74	9-30-74
	169.7	161.02	8.68	2+79.4	4" Stub NW		C46849		7405		9/27/74	

n.c #14345 7517 Norfolk Co. Bladder 7-29-75 (conn. to 33' w of E. fence)