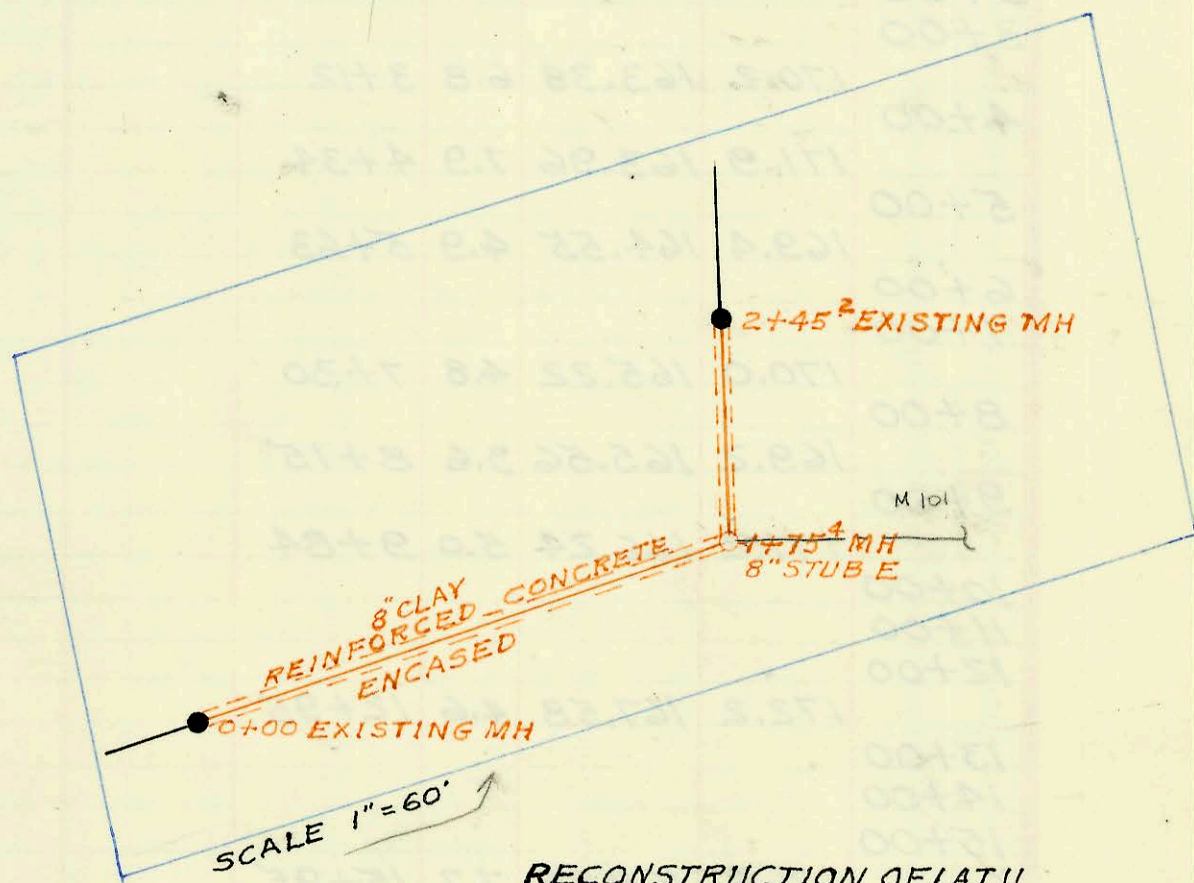


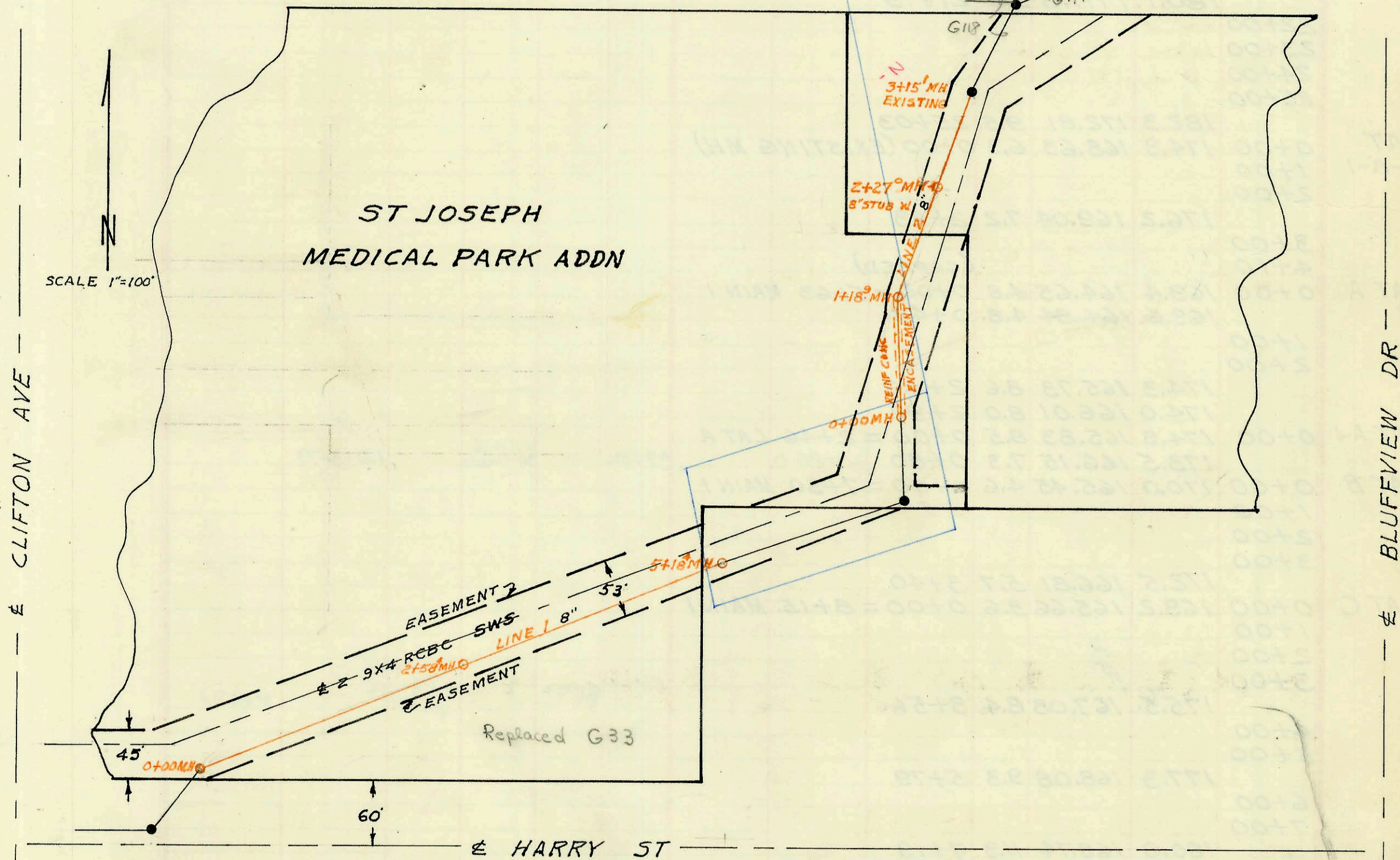
LAT 57 MAIN 17 55 22
 Built By UTILITY CONT. INC.
 Booked 9-18-74 From G-1
 Proj N^o DBKL 573072

on map



RECONSTRUCTION OF LAT II
 SUBMAIN W 55 12
 BUILT BY: UTILITY CONT. INC.
 PROJ. N^o DBLK 574068
 BOOKED 10-23-74 FROM JK 55 13

on map



SANITARY SEWER #12 RELOCATION
 CONTINGENT WITH STORM WATER DRAIN #13
 CONSTRUCTION
 BUILT BY: UTILITY CONTRACTORS
 PROJ. N^o DBKD 573073
 BOOKED 9-30-74 FROM JK 55 12

on map

CONSTRUCTION RECORD

SERVICE RECORD

STATION	ELEVATION		Depth	MANHOLE	4-INCH "Y" BRANCHES		No. of Permit		House Number		DATE OF PERMITS	
	Ground	Grade			North West	South East	North West	South East	North West	South East	North West	South East
LAT 57 MAIN 17 SS 22												
0+00	131.1	126.40	4.7	0+00 Existing MH	Existing 8" stub							
1+00	130.7	126.60	4.1		to 0+67.6		C47121		3341 N. Charles		10-22-74	
2+00	130.5	126.80	3.7		top 1+20.5		C47649		3345 N. Charles		12-4-74	
1+50	130.6	126.90	3.7	2+50.6								
3+00	130.7	127.00	3.7									
4+00	131.0	127.20	3.8									
4+50	130.9	127.26	3.6	4+29.5	4" stub East		C47707		3443 N. Charles		12-9-74	
SS#12 RELOCATION CONTINGENT WITH STORM WATER DRAIN #13												
LINE 1 0+00	134.0	123.50	10.5	0+00								
1+00	133.0	123.70	9.3									
2+00	133.8	123.89	9.9									
	133.4	124.00	9.4	2+58.4								
3+00	133.6	124.08	9.5									
4+00	132.2	124.27	7.9									
5+00	134.0	124.46	9.5									
	134.5	124.50	10.0	5+18.4								
LINE 2 0+00	137.9	125.08	12.8	0+00								
1+00	138.3	125.43	12.9									
	138.4	125.50	12.9	1+18.9								
2+00	136.9	125.63	11.3				2000-01162 C48254		3400 E. P. see below GRAND		59100 1/31/75	
	136.5	125.67	10.8	2+27.0	8" STUB WEST				(should be 3600 E Harry)			
3+00	136.0	125.79	10.2									
	136.0	125.82	10.2	3+15.1								
RECONSTRUCTION OF LAT II SUBMAIN W SS#12												
0+00	135.0	124.52	10.5	0+00 EXISTING MH								
1+00	142.8	124.68	18.1									
	138.0	124.92	13.1	1+75.4	8" STUB E							
2+00	134.8	125.01	9.8									
	136.0	125.05	11.0	2+45.2								

SWR2000-01162 59100 3600 E Harry - Reddi - 4" PVC Donut tied to claytile 21-way co -
6" Pipe PVC - Repair - 145H

C49823-1431 Cluffview Dr. - Howard Ladd - 6/18/75 - new 6" line into M.H. 1+75.4 for St. Joseph medical office
top C. 64596-3340 N. Charles - 12-21-77 - Wm. Berger, spec. fee Ch. rec. 372343 12-21-77 (top) 2+14.8