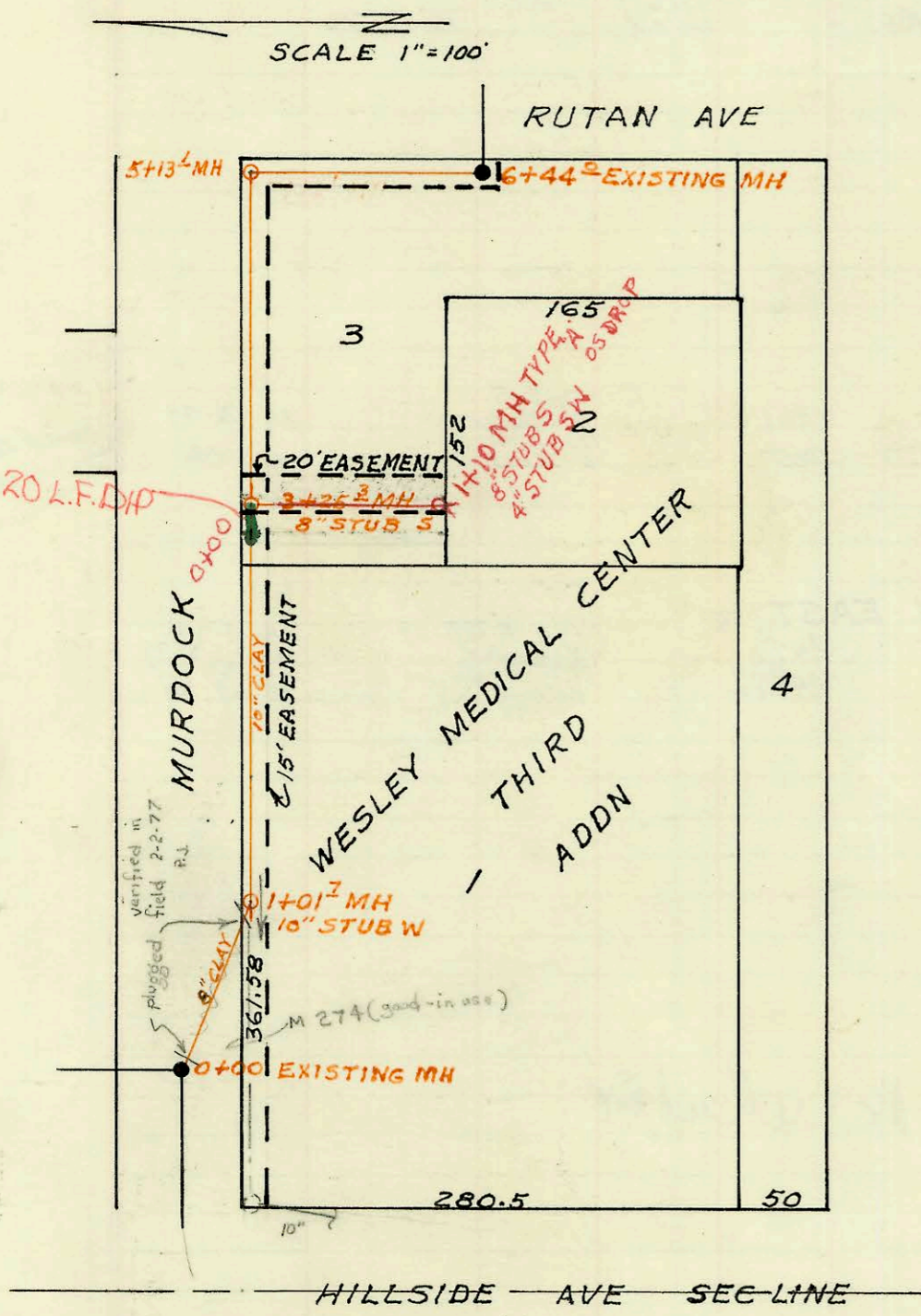
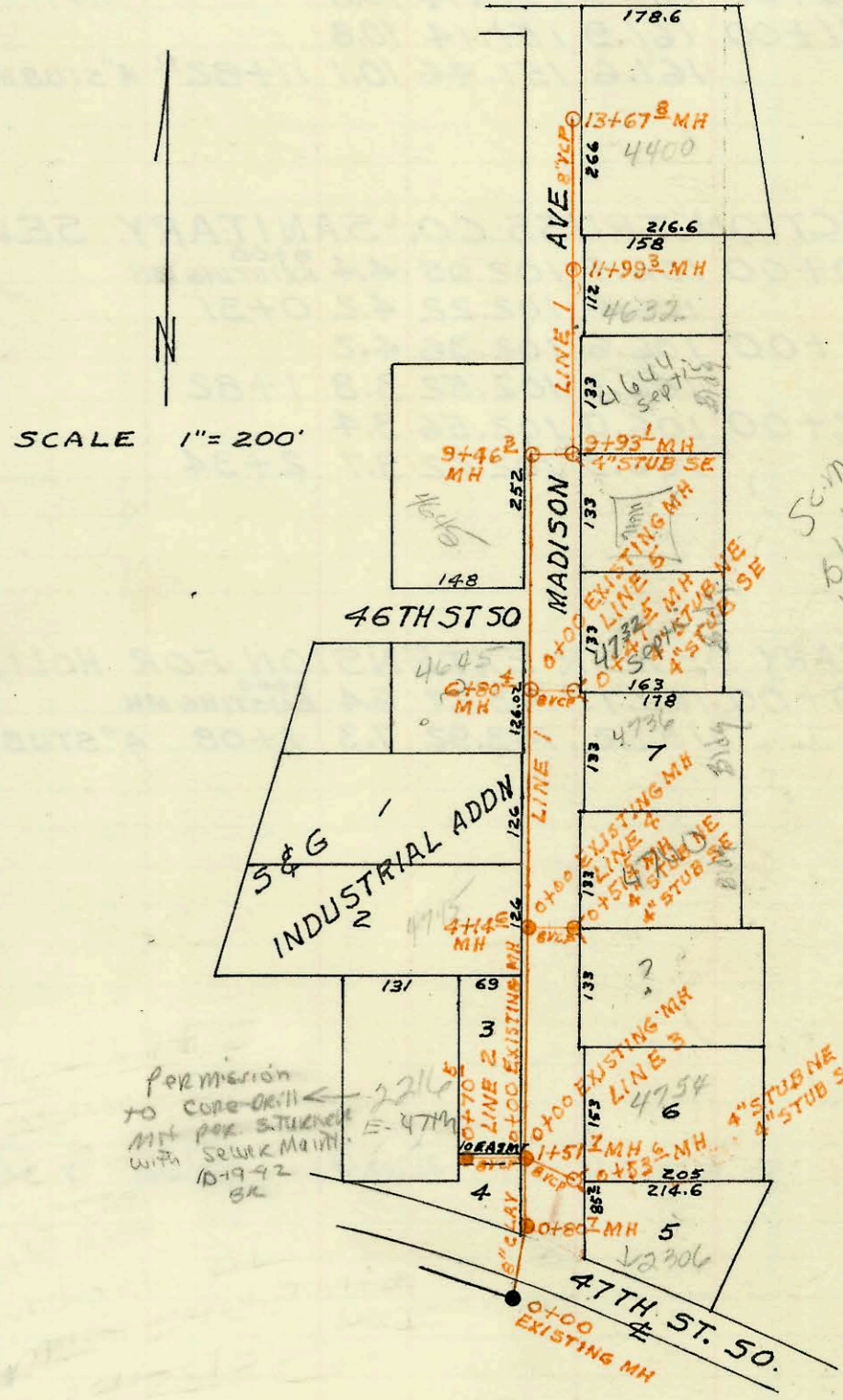


LAT 2 MAIN 3 WESTLINK SEWER
BUILT BY: UTILITY CONTRACTORS INC
PROJ N^o DBKL 574026
BOOKED 10-12-74 FROM G 8



RELOCATION OF PART OF
DIST M 55 N^o 12
BUILT BY: UTILITY CONTRACTORS INC
PROJ. N^o DBKW 703069
BOOKED 10-22-74 FROM 55 JK 8
ADDITION
BUILT BY: PRIVATE
PROJ N^o DBKW 705020
BOOKED 7-18-75 FROM PLAN



LAT 36 MAIN 1 SW INTERCEPTOR SEWER
BUILT BY: WB CARTER CONST. CO. INC.
PROJ N^o DBKL 573037
BOOKED 10-19-74 FROM 278Y

Some of these
old hrs may still
be on a
septic system
2/19/74
SK

CONSTRUCTION RECORD

SERVICE RECORD

STATION	ELEVATION		Depth	MANHOLE	4-INCH "Y" BRANCHES		No. of Permit		House Number		DATE OF PERMITS	
	Ground	Grade			North West	South East	North West	South East	North West	South East	North West	South East
LAT 2 MAIN 3 WESTLINK SEWER												
0+00	156.6	150.17	6.4	EXISTING MH								
1+00	157.3	150.37	6.9		0+56.2	1+19.6	C48360	C49303	9115	9104	8-12-75	4-29-75
2+00	158.5	150.57	7.9		1+42.5	3+19.0	C51385	C75734	9125	9020	9-16-75	12-15-79
	158.8	150.69	8.1	2+61.5		3+72.5		C74426	9019	7446		9-20-79
3+00	158.7	150.84	7.9		3+07.5	3+81.1	C55592	C74425	1518	9019	5-24-76	9-20-79
4+00	158.6	151.24	7.4		4+44.2	4+68.2	C55902	C74423	9017	9012	6-14-76	9-20-79
	159.6	151.57	8.0	4+82.8	4+76	4+75.5	C55901	C74422	9018	9010	6-14-76	9-20-79
LAT 36 MAIN 1 SW INTERCEPTOR SEWER												
LINE 1												
0+00	84.18	73.00	11.2	EXISTING MH								
	83.6	73.24	10.4	0+80.7								
1+00	83.5	73.30	10.2									
	82.8	73.46	9.3	1+51.7								
2+00	82.5	73.60	8.9									
3+00	82.7	73.90	8.8									
4+00	83.2	74.20	9.0		4+06.9		8671		4745		7-8-83	
	83.3	74.24	9.1	4+14.6			8672					
5+00	83.0	74.50	8.5									
6+00	82.9	74.80	8.1									
	83.2	75.05	8.2	6+80.4								
7+00	83.2	75.10	8.1									
8+00	83.8	75.40	8.4									
9+00	84.0	75.70	8.3									
	84.0	75.94	8.1	9+46.3								
	84.2	76.19	8.0	9+93.1	4" STUB SE		12847		4646 S		12-19-84	
10+00	84.2	76.20	8.0									
11+00	83.8	76.50	7.3		top 11+34.3		C48059		4632 S		1-16-75	
	83.5	76.80	6.7	11+99.3								
12+00	83.5	76.80	6.7									
13+00	84.2	77.10	7.1		top 13+51.8		C48058		4400 S		1-16-75	
	84.2	77.31	6.9	13+67.8								
LINE 2												
0+00	82.8	74.50	8.3	0+00=1+51.7								
	83.4	74.85	8.6	0+70.5	4" SDR 35 MH TOP		92353957		2216 E 4774 S		10-19-92	
LINE 3												
0+00	82.8	74.00	8.3	0+00=1+51.7								
	83.8	74.29	9.5	0+53.6	4" STUB NE 4" STUB SE		C61129		4734 L Madison 2306 E 4774 S		5-12-77	
							16282				5-19-86	
LINE 4												
0+00	83.3	74.34	9.0	0+00=4+14.6								
	83.0	74.60	8.4	0+51.5	4" STUB NE 4" STUB SE							
LINE 5												
0+00	83.2	75.15	8.1	0+00=6+80.4								
	83.2	75.40	7.8	0+47.5	4" STUB NE 4" STUB SE		00084		4736 S Madison		4-15-80	
RELOCATION OF PART OF DIST M 55 N° 12												
0+00	152.43	145.10	7.3	EXISTING MH								
	154.6	147.69	6.9	1+01.7	10" STUB W							
2+00	157.0	148.09	8.9									
3+00	159.6	148.49	11.1									
	160.0	148.58	11.4	3+25.3	8" STUB S							
4+00	161.0	148.89	12.1									
5+00	160.8	149.29	11.5									
	160.7	149.44	11.3	5+13.1								
6+00	159.0	149.72	9.3									
	157.86	149.85	8.0	6+44.0								
ADDITION TO PART OF DIST M 55 12												
0+00	159.8	148.75	11.0	EXISTING								
0+05	161.0	149.25	11.8	8" STUB S								
		150.00	11.0	1+10	4" STUB SW							

C60386-3243 C. Madock - 7-17-75 - Sub-S.W.
C60387