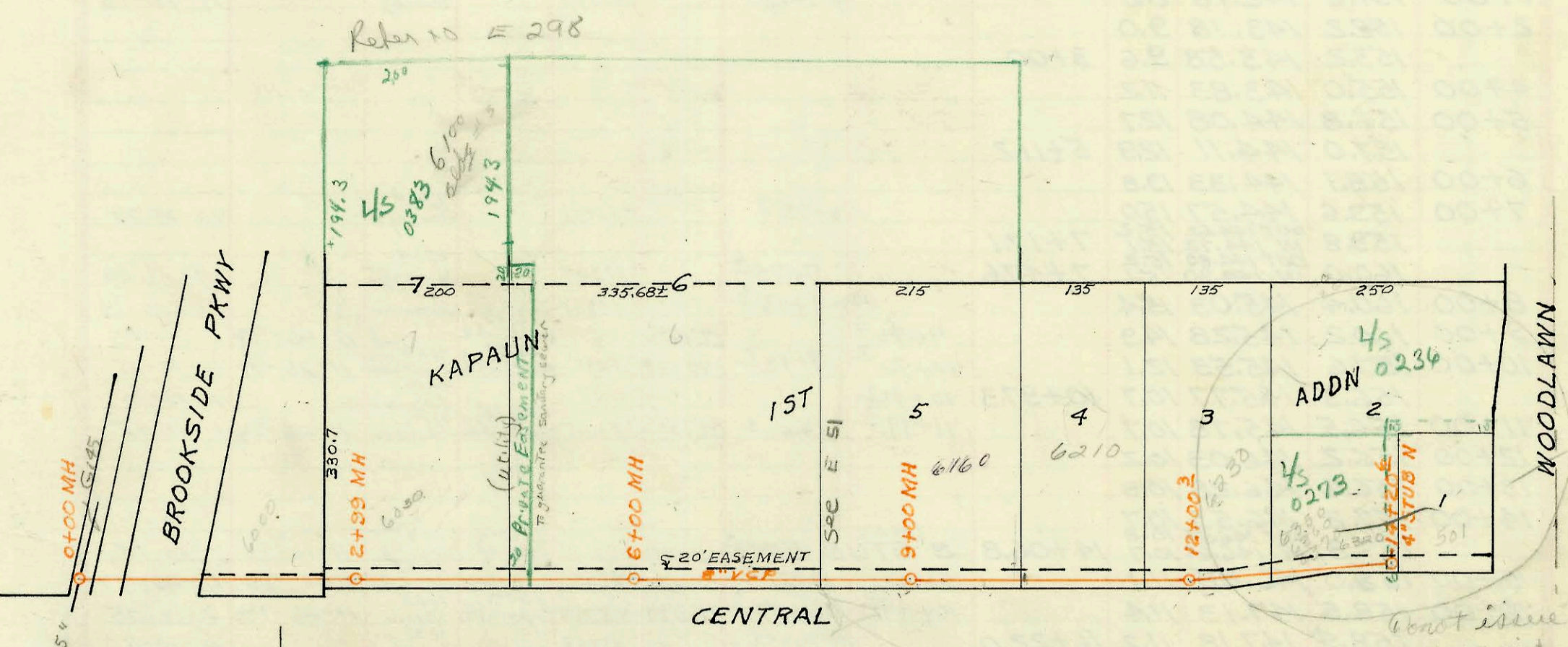
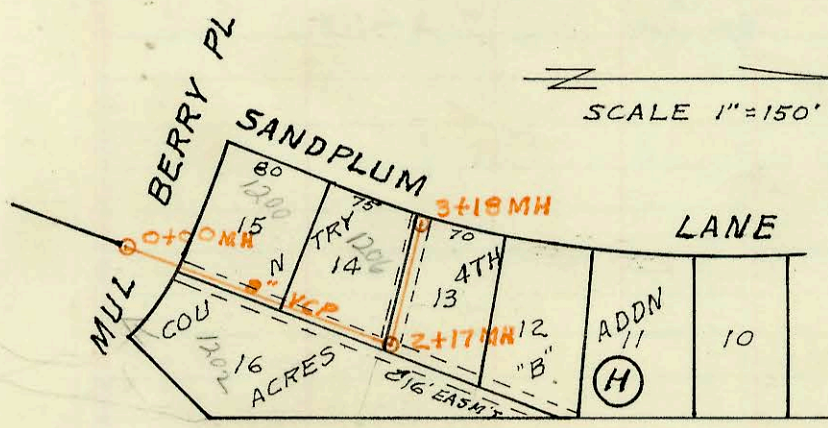


LAT 2 MAIN 23 SAN SEWER 22
 BUILT BY: UTILITY CONTRACTORS INC
 PROJ N^o DBKL574059
 BOOKED 12-16-74 FROM SS JK #6



LAT 97 DRY CREEK MAIN N^o 2. SS 12
 BUILT BY: UTILITY CONTRACTORS INC
 PROJ N^o DBKL574018
 BOOKED 12-17-74 FROM IH 84



SANITARY SEWER FOR LOTS 13 THRU 16
 BLK H COUNTRY ACRES 4TH B' ADDN
 BUILT BY: PRIVATE
 PROJ N^o BHKB503067
 BOOKED 12-19-74 FROM PLAN

88 52.9

about issue
 any permit
 unless talk to
 Currier Brewer
 12-7-74

10+26.8
 9 00.0
 1 26.8

on map

CONSTRUCTION RECORD

SERVICE RECORD

STATION	ELEVATION		Depth	MANHOLE	4-INCH "Y" BRANCHES		No. of Permit		House Number		DATE OF PERMITS		
	Ground	Grade			North West	South East	North West	South East	North West	South East	North West	South East	
LAT 23 MAIN 23 SAN SEWER #22													
LINE 1 0+00	101.12	94.74	6.4	0+00	EXISTING MH								
+02					EXISTING 8" STUB								
1+00	101.3	94.94	6.4										
	101.2	95.00 IN 95.10	6.1	1+29.6									
2+00	100.2	95.24	5.0										
3+00	100.2	95.44	4.8										
	100.7	95.62	5.1	3+91.0	4" STUB NW		19359		4110 W 33rd S.E.		10/21/87		
4+00	100.6	95.64	5.0										
5+00	100.2	95.84	4.4										
6+00	100.0	96.04	4.0										
	100.0	96.09 IN 96.19	3.8	6+25.9	4" STUB S		24619		4115 W 33rd S.		1-12-90		
7+00	100.3	96.34	4.0										
8+00	99.5	96.54	3.0										
	99.4	96.64	2.8	8+52.7	4" STUB NW 4" STUB W								
LINE 2													
0+00	100.0	95.72	4.3	0+00	= 3+91 LINE 1								
	100.9	95.89	5.0	0+56.8	4" STUB SW 4" STUB SE		13442		3405 1. West		4-11-85		
LAT 97 DRY CREEK MAIN N°2 SAN SEWER #12													
0+00	177.8	169.17	8.6	0+00	ON EXISTING 15" LINE								
1+00	178.3	169.67	8.6										
2+00	179.8	170.17	9.6										
	179.3	170.67	8.6	2+99									
3+00	179.3	170.67	8.6				1368		6030 E Central		9-26-80		
4+00	181.7	172.32	9.4				267248		6210 E Central		7-13-78		
5+00	184.2	173.97	10.2				267988		6100 E Central		8-17-78		
	185.8	175.62	10.2	6+00							1-27-79		
7+00	187.9	177.27	10.6										
8+00	188.4	178.92	9.5										
	189.1	180.57	8.5	9+00			275173		6100 E Central		12-18-79		
10+00	193.1	182.22	10.9				272414		6210 E Central		6-19-79		
11+00	193.1	183.87	9.2				269939		6100 E Central		9-9-77		
12+00	193.6	185.52	8.1										
	193.6	185.52 IN 185.62	8.1	12+00.3									
13+00	193.7	186.02	7.7										
	193.8	186.42	7.4										
14+00	193.5	186.51	7.0	14+20.6	4" STUB N		255916		6320 E Central		6-14-76		
									501 71 Woodlawn		3-26-74		
SANITARY SEWER FOR LOTS 13 THRU 16 BLK H COUNTRY ACRES 4TH 'B' ADDN													
0+00	136.00	126.84	9.16	0+00									
1+00	135.3	127.24	8.1				1129.28	1138.1	242288	247611	1200 Sandplum	12-27-73	12-2-74
2+00	135.5	127.64	7.9				1785.00		242889		1202 Sandplum	12-27-73	
	137.00	127.71 IN 127.81	9.3	2+17									
3+00	141.2	128.14	13.1										
	140.61	128.21	12.4	3+18	8" STUB N								

5/0 # 01503 - 10-11-80 (6030 E Central) (m. 24 2499) for temp. connection for lot 16 Bldg.