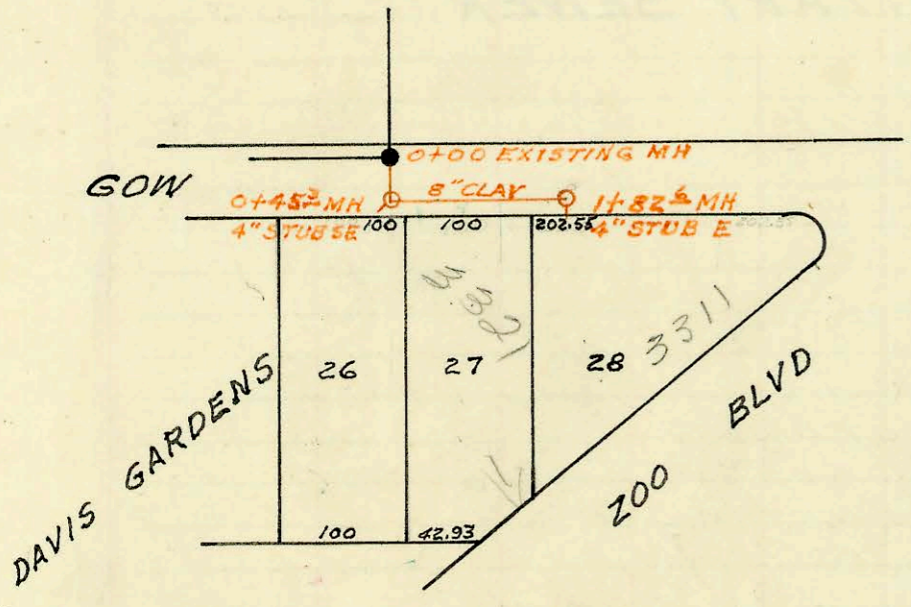


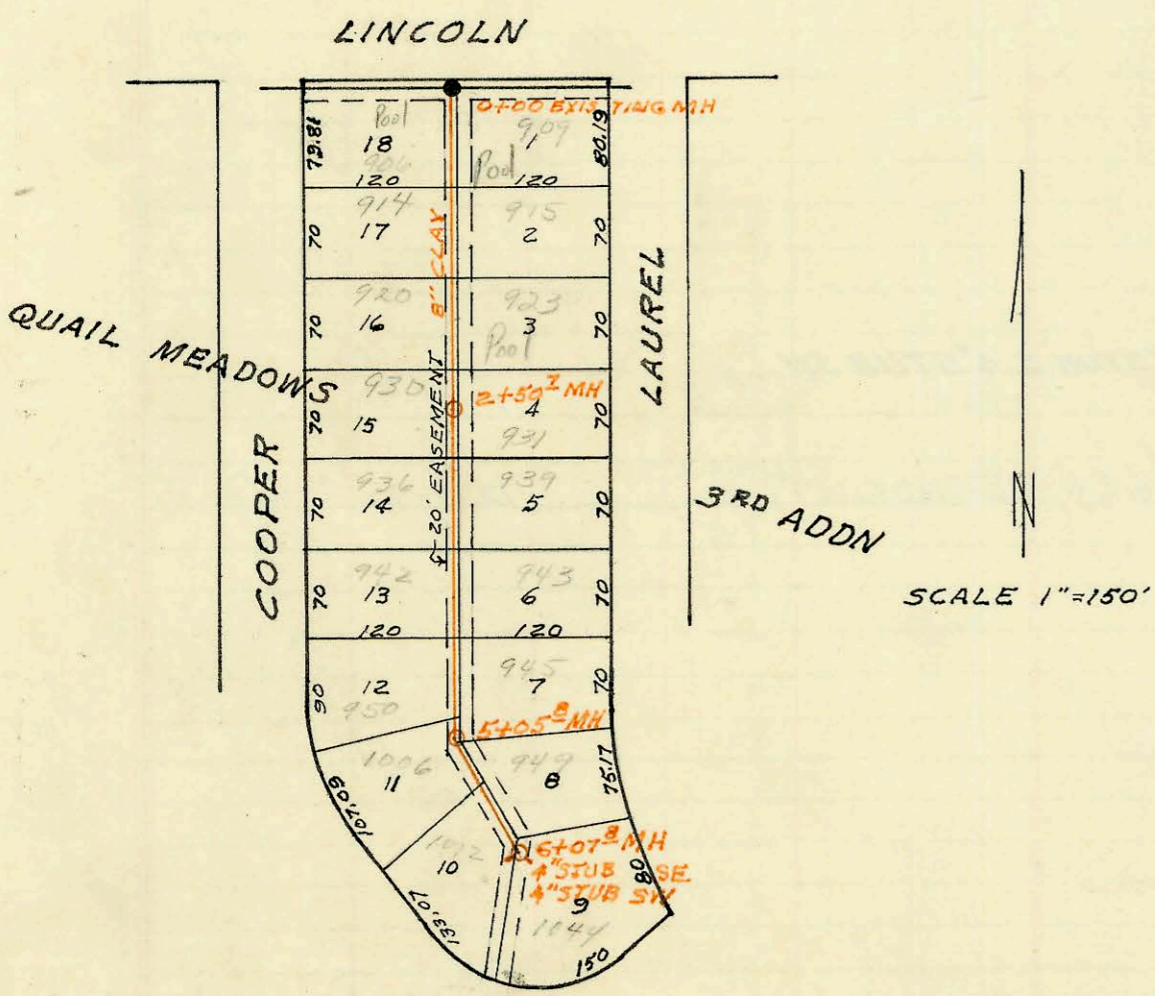
SAN SEWER CENTRAL INDUSTRIAL CORRIDOR (URA)
 BUILT BY: PRIVATE
 PROJ N^o DBKW 704052
 BOOKED 2-13-75 FROM 1H76

on map



LATERAL 126 SAN SEWER N^o 22
 BUILT BY: MID STATES CONST CO. INC.
 PROJ. N^o DBKL 574071
 BOOKED 3-14-75 FROM SS #13 JK

on map



LATERAL 7 MAIN 18 W. I. S.
 BUILT BY: W. B. CARTER CONST CO INC
 PROJ N^o DBKL 574076
 BOOKED 3-14-75 FROM 261-Y

on map

CONSTRUCTION RECORD						SERVICE RECORD						
STATION	ELEVATION		Depth	MANHOLE	4-INCH "Y" BRANCHES		No. of Permit		House Number		DATE OF PERMITS	
	Ground	Grade			North West	South East	North West	South East	North West	South East	North West	South East
SANITARY SEWER CENTRAL INDUSTRIAL CORRIDOR (URA)												
0+00	119.2	OUT 111.07 IN 111.47	8.1 7.7	0+00 EXISTING MH								
1+00	119.9	111.77	8.1	0+87.0 TYPE C			20816		1918 Wakash		6-7-88	
2+00	119.8	112.07	7.7									
3+00	118.1	112.37	5.7									
	118.1	OUT 112.40 IN 112.50	5.7	3+09.3 TYPE C								
	118.1	OUT 112.54 IN 112.64	5.5	3+23.5 TYPE C								
4+00	118.4	112.87	5.5		4" DR 35 3+91.5		96167627		1951 Ohio		10-9-76	
5+00	119.0	113.17	5.8		typ 5+19.2		C48622		Ohio		3-10-75	
6+00	119.3	113.47	5.8									
	119.2	113.64	5.6									
6+68.2	119.2	113.74	5.5	6+58.2 TYPE C	6+35.4		C78663		1953 Ohio		3-15-79	
	119.2	113.77	5.4									
LATERAL 126 SANITARY SEWER #22												
0+00	122.84	112.00	10.8	0+00 EXISTING MH								
	122.4	OUT 112.18 IN 112.28	10.2	0+45.3 TYPE A	0+59.3		C76645		3321 800 Blvd		2-29-80	
1+00	122.3	112.50	10.0	1+82.6 TYPE A			C48689		3311 800 Blvd		3-17-75	
	121.2	112.83	8.4									
LATERAL 7 MAIN 18 W.I.S.												
0+00	161.41	149.69	11.7	0+00 EXISTING MH	1+31.3		C55410 C50908	906 Copper	909 Jamel		5-13-76	8-20-75
1+00	163.4	151.89	11.5	1+96 TYPE C	1+81.4		C55412 C50907	914 Copper	915 Jamel		5-13-76	9-26-75
2+00	164.2	154.09	10.1	2+55.7 TYPE C	2+40		C55413 C50906	926 Copper	923 Jamel		5-13-76	9-20-75
	164.5	155.19	9.3	2+50.7 TYPE C	3+05.7		C50904	928 Copper	931 Jamel		6-29-76	8-20-75
3+00	164.7	155.74	9.0		3+19		C50905	936 Copper	939 Jamel		6-29-76	8-20-75
4+00	166.8	156.84	10.0	3+81.7 TYPE C	3+74.6		C50778 C55409	942 Copper	943 Jamel		8-11-75	5-13-76
5+00	168.5	157.90	10.6	4+61.3 TYPE C	4+54.4		C50797 C49326	950 Copper	945 Jamel		8-12-75	5-1-75
	168.5	OUT 157.96 IN 158.06	10.5	5+05.8 TYPE C			C50798	1006 Copper			8-12-75	
6+00	170.4	159.08	11.3	6+07.8 TYPE C	4" STUB SE		C50797 C49327	1012 Copper	949 Jamel		8-11-75	5-1-75
	170.5	159.20	11.3	6+07.8 4" STUB SW			C50779	1044 Copper			8-11-75	8-11-75