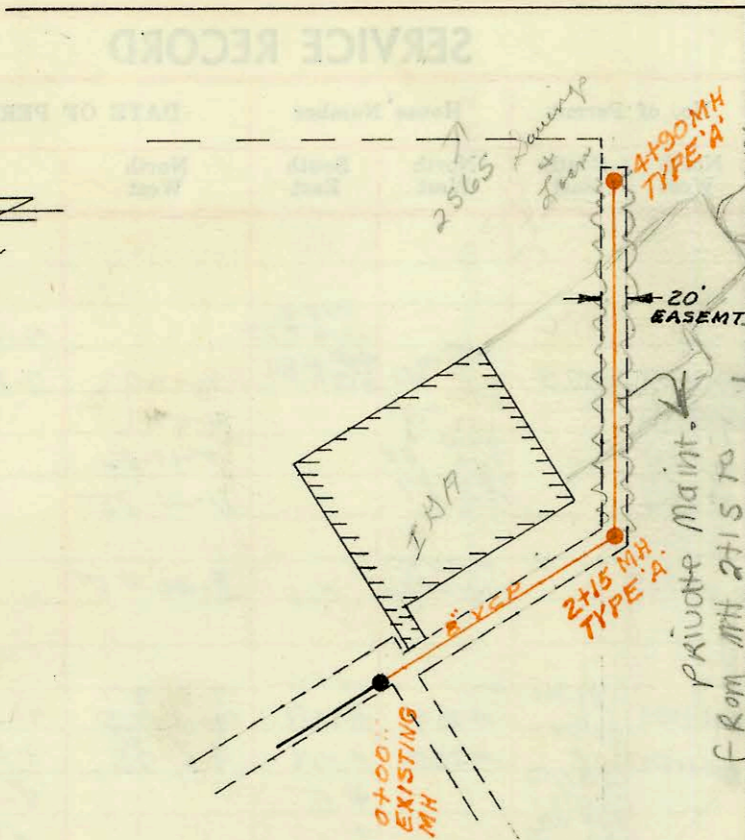


SENECA

SCALE 1"=150'



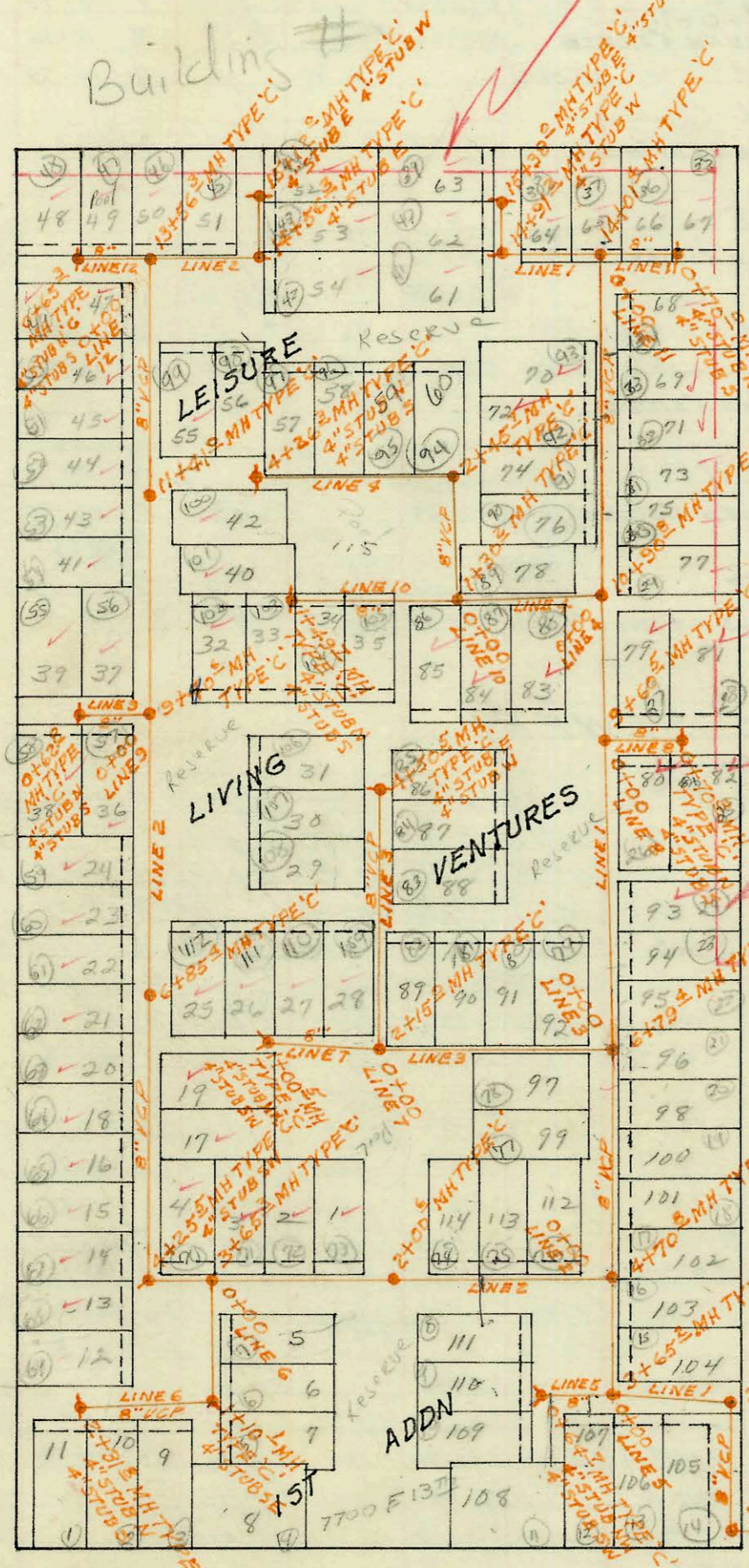
advised by City  
 Marc took copy  
 10-19-73 that portion  
 under Rly add was changed  
 to 3" pipe at time of  
 plat add. 8/2/1993

WESTWAY SHOPPING CENTER SAN SEWER  
 BUILT BY: (PRIVATE)  
 PROJ. N<sup>o</sup> DBKW705006  
 BOOKED 5-15-75 FROM INSR CARDS

**BeWARE**  
 20' Continental Pipe line  
 8" H. Press. Grade 0.1 line  
 F/m 129 Pg 987 9/16/85

8-6-75  
 KEEP IN MIND  
 THESE ARE NOT  
 FINALS. MAY BE  
 6 MO. TO 1 YR. BEFORE  
 LINES GO TO BLDGS. & SAME  
 CONTRACTOR MAY NOT DO  
 WORK  
 IF NOT THEN NEW PERMITS  
 WILL BE NEEDED.  
 7700 E. 13th - 43-44-55-46-42-55-65-69  
 BLDGS. #16-#18-15-14-13-40  
 2nd C.C.

LATERAL 99 DRY CREEK MAIN 2 SAN S N<sup>o</sup> 12  
 BUILT BY: MID STATES CONST. CO. INC.  
 PROJ N<sup>o</sup> DBKL574079  
 BOOKED 5-20-75 FROM IH 81



**BeWARE**  
 20' Continental  
 Pipeline Easement  
 Reconnected F/m 129  
 Pg 987  
 8" H. Press. Grade  
 0.1 line 9/16/85

NOTE: CLAY PIPE STUBS TO BE INSTALLED  
 IN MANHOLES WHEN NECESSARY TO SERVE ANY  
 ONE LOT.  
**City Maintenance**  
 Note: All Reserves are dedicated  
 for the construction operation  
 and maintenance of public  
 utilities.

SCALE 1"=150'

- #14760 7700 E 13th # 91 9-27-75
- #14761 " " # 92 " "
- NC #16283 " " # 54 5-19-76
- 96-8672-7 5-30-96 7700 E 13th Bldg #98 -
- 97-15308-7 9/18/92 7700 E 13th Bldg #95 -
- 98-15843-7 8-26-98 7700 E 13th #69 - ORK top at 13+09.4 not used. New tap made at 13+19.8 - 4" sch 40 PVC
- 98-24162-7 12-14-98 7700 E 13th Bldg #62 -
- 99-01072 11-1-99 7700 E 13th # 50 - Padgett 4" sch 40 at 14+68.3
- 99-01485 12/16/99 7700 E 13th - Padgett 4" sch 40 at 11+61

CONSTRUCTION RECORD

SERVICE RECORD

STATION	ELEVATION		Depth	MANHOLE	4-INCH "Y" BRANCHES		No. of Permit		House Number		DATE OF PERMITS	
	Ground	Grade			North West	South East	North West	South East	North West	South East	North West	South East
<b>WESTWAY SHOPPING CENTER SAN SEWER (PRIVATE)</b>												
0+00	101.9	OUT 95.00 IN 95.30	6.9 6.6	0+00 EXISTING								
1+00	100.8	95.70	5.1									
2+00	101.0	OUT 96.10 IN 96.16	4.9 4.8	2+15 TYPE 'A'								
3+00	101.6	96.60	5.0									
4+00	101.3	97.00	4.3	top 4+83 <sup>510</sup>			95-10761-7 249508	2565/0 S. Seneca		7-11-95 5-15-75		
	101.0	97.41	3.6	4+90 TYPE 'A'			98172307			9-15-98		
<b>LATERAL 99 DRY CREEK MAIN 2 SANITARY SEWER N=12</b>												
LINE 1 0+00	194.5	OUT 185.89 IN 186.02	8.6 8.3	0+00 EXISTING MH								
	194.3	186.12	8.2	0+36.4								
1+00		OUT 186.38 IN 186.68	10.0 9.8	1+41.6								
2+00		OUT 186.90 IN 187.12	8.9 8.8	2+59.4	1+91 <sup>add</sup>	3+15.4 <sup>top</sup>	CS1180 18350	#105	#105	9-5-75	5-15-75	6-15-75
	196.0	187.19	8.8	2+59.4		3+43.2 <sup>top</sup>	20882 N.C. to Eddy	#106	#106			
3+00		OUT 187.36 IN 187.77	11.6 11.4	3+65.2		3+04.4	7477 7496	#104	#104	9-5-75	9-7-75	9-7-75
	199.2	187.17	11.4	3+65.2		5+00.8 <sup>top</sup>	CS1179 7495	#102	#102			
4+00		OUT 187.90 IN 188.26	9.6 9.5	4+70.8		5+49.4	CS1186 7493	#112	#100	9-9-75	9-9-75	9-9-75
	197.8	188.26	9.5	4+70.8		5+27.8	CS1186 7492	#112	#100	9-9-75	9-9-75	9-9-75
5+00		188.38				6+09.6 <sup>top</sup>	CS1186 7492	#99	#98	9-9-75	9-9-75	9-9-75
6+00		OUT 188.78 IN 189.10	10.4 10.3	6+79.4		6+36.4	CS1248 18381	#97	#96	9-9-75	9-9-75	9-9-75
	199.5	189.20	10.3	6+79.4		7+27.4 <sup>top</sup>	CS1248 17496	#97	#95			
7+00		189.28				7+73.4 <sup>top</sup>	CS1235 17495	#94	#94			
8+00		189.68				8+19.4	16977	#93	#93			
9+00		OUT 190.08 IN 190.42	10.0 9.9	9+60.5	4" PVC 40 91318 top	8+93.5 <sup>top</sup>	93-24467	#72	#80	8-9-93	8-9-93	8-9-93
	200.3	190.42	9.9	9+60.5		10+32.8	CS1162 21440	#79	#79			
10+00		OUT 190.58 IN 191.04	10.8 10.7	10+90.8		11+23.8	91348697	#77	#77			
	201.7	191.04	10.7	10+90.8		11+66.8	CS1059 7770E	#75	#75			
11+00		191.15				12+12.8	CS1059 7770E	#73	#73	8-10-75	8-21-75	8-21-75
12+00		192.31				12+50.1	CS1059 7770E	#72	#72	8-10-75	8-21-75	8-21-75
13+00		193.46				12+57.4	CS1059 7770E	#71	#71	8-27-75	8-27-75	8-27-75
14+00		OUT 194.63 IN 194.75	9.8 9.7	14+01.4		13+09.4	CS1059 7770E	#69	#69	8-26-75	8-26-75	8-26-75
	204.4	195.10	9.3	14+01.4		12+98.4	CS1059 7770E	#61	#70	8-22-75	8-22-75	8-22-75
	204.4	195.20	9.2	14+91.2	4" STUB W		CS1059 7770E	#61	#70	8-22-75	8-22-75	8-22-75
15+00		195.24				15+38.0	CS1059 7770E	#62	#62	8-22-75	8-22-75	8-22-75
	204.8	195.42	9.4	15+38.0	4" STUB W		CS1059 7770E	#63	#63	8-22-75	8-22-75	8-22-75
LINE 2 0+00	198.8	189.60	9.2	0+00 = 4+70.8 LINE 1								
1+00		190.00				0+96.8	CS1188	#113	#111	9-5-75	9-5-75	9-5-75
	199.3	190.40	8.9	2+00.6		2+76.6	CS1188	#1	#1	4-10-75	4-10-75	4-10-75
3+00		OUT 190.80 IN 191.06	10.3 10.2	3+65.3		3+55.3	CS1188	#2	#2	4-10-75	4-10-75	4-10-75
	201.4	191.16	10.2	3+65.3		4+25.5	CS1188	#3	#3	4-10-75	4-10-75	4-10-75
4+00		OUT 191.30 IN 191.50	10.7 10.6	4+25.5		4+86.3	CS1188	#13	#13	8-1-75	8-1-75	8-1-75
	202.1	191.50	10.6	4+25.5		5+46.3	CS1188	#14	#14	7-14-81	4-10-75	4-10-75
5+00		191.79					CS1188	#17	#17	4-10-75	4-10-75	4-10-75
6+00		OUT 192.19 IN 192.54	11.5 11.4	6+85.4			CS1188	#24	#24	8-1-75	8-1-75	8-1-75
	204.0	192.64	11.4	6+85.4			CS1188	#36	#36	8-1-75	8-1-75	8-1-75
7+00		192.70					CS1188	#37	#32	8-11-75	8-19-75	8-19-75
8+00		193.10					CS1188	#41	#40	8-11-75	8-19-75	8-19-75
9+00		OUT 193.50 IN 193.76	11.1 11.0	9+40.6			CS1188	#43	#42	8-11-75	8-19-75	8-19-75
	204.8	193.76	11.0	9+40.6			CS1188	#44	#45	8-11-75	8-19-75	8-19-75
10+00		194.00					CS1188	#45	#45	8-11-75	8-19-75	8-19-75
11+00		OUT 194.40 IN 194.66	11.0 10.9	11+41.0			CS1188	#50	#54	8-19-75	8-19-75	8-19-75
	205.6	194.66	10.9	11+41.0			CS1188	#51	#53	8-19-75	8-19-75	8-19-75
12+00		194.90					CS1188	#52	#52	8-19-75	8-19-75	8-19-75
13+00		OUT 195.29 IN 195.62	11.0 10.9	13+56.3			CS1188	#50	#54	8-19-75	8-19-75	8-19-75
	206.5	195.62	10.9	13+56.3			CS1188	#51	#53	8-19-75	8-19-75	8-19-75
14+00		195.79					CS1188	#52	#52	8-19-75	8-19-75	8-19-75
15+00		OUT 196.02 IN 196.12	10.0 9.9	14+56.3			CS1188	#50	#54	8-19-75	8-19-75	8-19-75
	206.0	196.12	9.9	14+56.3			CS1188	#51	#53	8-19-75	8-19-75	8-19-75
15+00		196.29					CS1188	#52	#52	8-19-75	8-19-75	8-19-75
	206.3	196.34	10.0	15+12.0			CS1188	#52	#52	8-19-75	8-19-75	8-19-75
LINE 3 0+00	199.5	189.67	9.8	0+00 = 6+79.4 LINE 1								
1+00		190.07										
2+00		OUT 190.47 IN 190.53	11.5 11.4	2+15.0								
	202.0	190.63	11.4	2+15.0								
3+00		191.24										
4+00		191.96										
	203.0	192.32	10.7	4+50.5								

N.C. C 50612 - 7700 E. 13th - #14 - 8-1-75  
 C 50613 - #15 -  
 C 50614 - #16 -  
 C 50615 - #18 -  
 C 50616 - #20 -  
 C 50617 - #21 -  
 C 50618 - #22 -  
 C 50619 - #23 -  
 C 50620 - #24 -  
 C 50621 - #25 -  
 C 50622 - #26 -  
 C 50623 - #27 -  
 C 50624 - #28 -  
 C 50625 - #29 -  
 C 50626 - #30 -  
 C 50627 - #31 -  
 C 50628 - #32 -  
 C 50629 - #33 -  
 C 50630 - #34 -  
 C 50631 - #35 -  
 C 50632 - #36 -  
 C 50633 - #37 -  
 C 50634 - #38 -  
 C 50635 - #39 -  
 C 50636 - #40 -  
 C 50637 - #41 -  
 C 50638 - #42 -  
 C 50639 - #43 -  
 C 50640 - #44 -  
 C 50641 - #45 -  
 C 50642 - #46 -  
 C 50643 - #47 -  
 C 50644 - #48 -  
 C 50645 - #49 -  
 C 50646 - #50 -  
 C 50647 - #51 -  
 C 50648 - #52 -  
 C 50649 - #53 -  
 C 50650 - #54 -  
 C 50651 - #55 -  
 C 50652 - #56 -  
 C 50653 - #57 -  
 C 50654 - #58 -  
 C 50655 - #59 -  
 C 50656 - #60 -  
 C 50657 - #61 -  
 C 50658 - #62 -  
 C 50659 - #63 -  
 C 50660 - #64 -  
 C 50661 - #65 -  
 C 50662 - #66 -  
 C 50663 - #67 -  
 C 50664 - #68 -  
 C 50665 - #69 -  
 C 50666 - #70 -  
 C 50667 - #71 -  
 C 50668 - #72 -  
 C 50669 - #73 -  
 C 50670 - #74 -  
 C 50671 - #75 -  
 C 50672 - #76 -  
 C 50673 - #77 -  
 C 50674 - #78 -  
 C 50675 - #79 -  
 C 50676 - #80 -  
 C 50677 - #81 -  
 C 50678 - #82 -  
 C 50679 - #83 -  
 C 50680 - #84 -  
 C 50681 - #85 -  
 C 50682 - #86 -  
 C 50683 - #87 -  
 C 50684 - #88 -  
 C 50685 - #89 -  
 C 50686 - #90 -  
 C 50687 - #91 -  
 C 50688 - #92 -  
 C 50689 - #93 -  
 C 50690 - #94 -  
 C 50691 - #95 -  
 C 50692 - #96 -  
 C 50693 - #97 -  
 C 50694 - #98 -  
 C 50695 - #99 -  
 C 50696 - #100 -