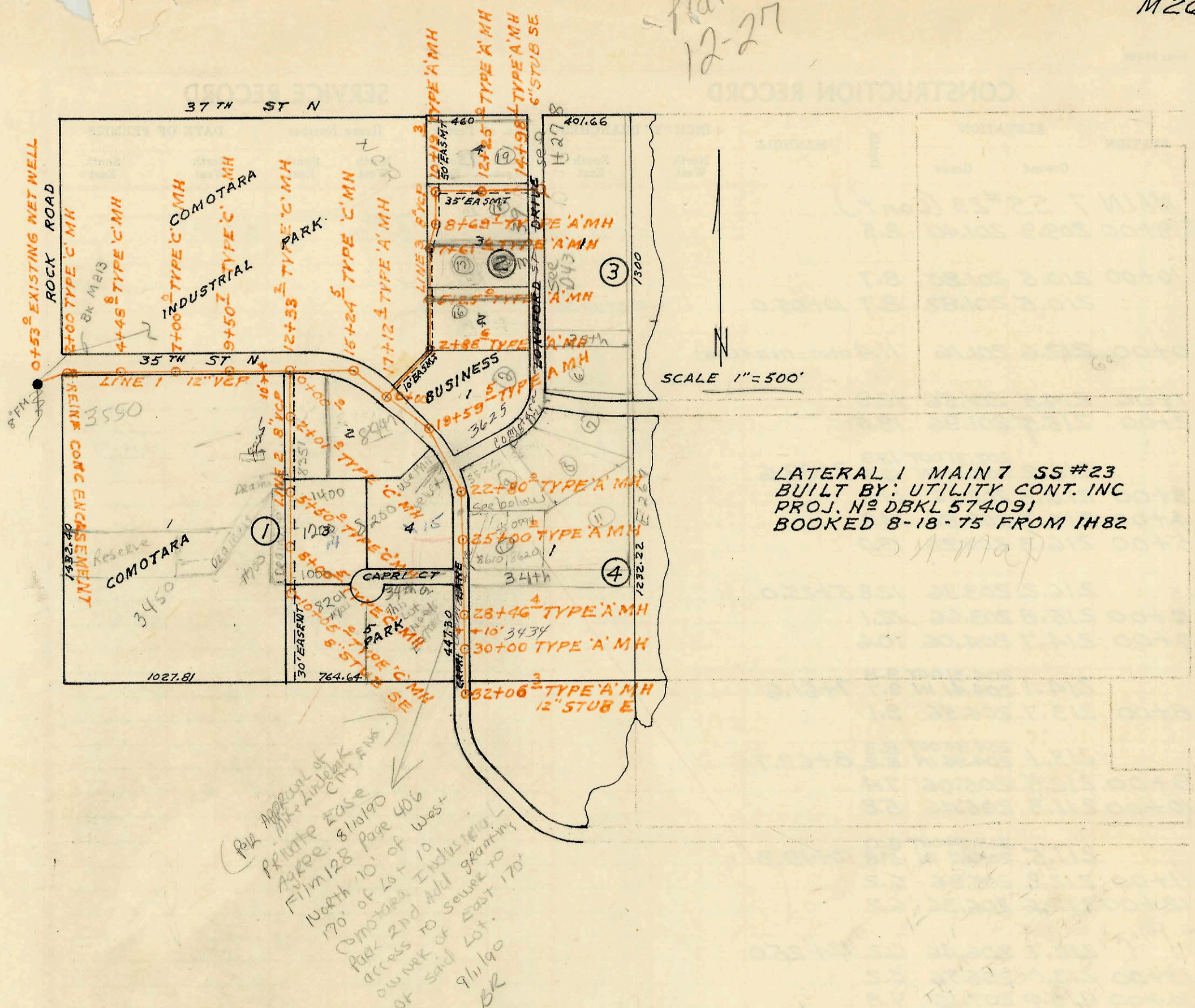


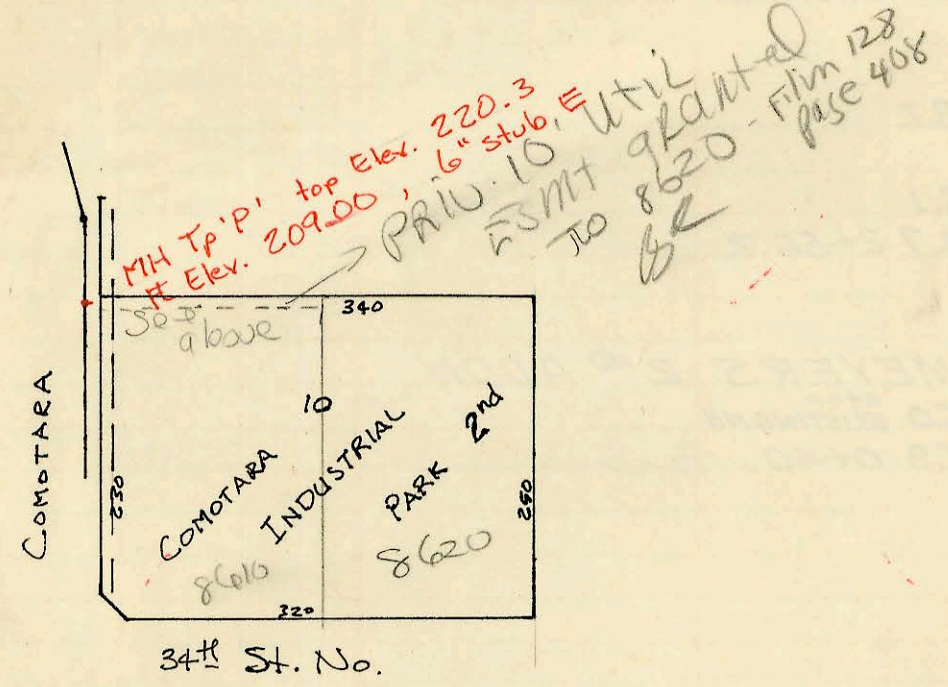
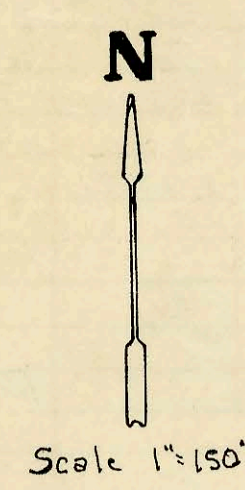
flat 12-27



LATERAL I MAIN 7 SS#23
 BUILT BY: UTILITY CONT. INC
 PROJ. N^o DBKL 574091
 BOOKED 8-18-75 FROM 1H82

(Per Approval of
 Private Zone
 Film 128 Page 406
 North 10' of West
 170' of Lot 10
 Comotara Industrial
 Park 2nd Addn
 access to sewer to
 owner of East 170'
 of said lot.
 9/11/90
 BR

Manhole to serve Lot 10 Comotara
 Industrial Park 2nd Addn.
 263 PPS Built By DONDLINGER & SONS
 Booked 3-25-91 from As Built Plan.



CONSTRUCTION RECORD

SERVICE RECORD

STATION	ELEVATION		Depth	MANHOLE	4-INCH "Y" BRANCHES		No. of Permit		House Number		DATE OF PERMITS	
	Ground	Grade			North West	South East	North West	South East	North West	South East	North West	South East
LATERAL 1 MAIN 7 55 #23												
LINE 1 0+00		189.00										
	197.7	189.00	8.7	EXIST WET Well								
1+00	196.7	189.24	7.5									
	197.2	189.75 OUT	7.6									
		189.85 IN	7.4	2+00								
3+00	199.0	190.73	8.3									
4+00	200.6	191.61	9.0									
	201.1	192.05	9.1	4+48.8								
5+00	201.4	192.39	9.0									
6+00	202.0	193.07	8.9	4+48.8								
5+00	203.0	193.75	9.3	7+00								
8+00	204.3	194.43	9.9									
9+00	205.3	195.11	10.2									
	205.8	195.45	10.4	9+50.7								
10+00	206.3	195.79	10.5									
11+00	207.3	196.47	10.8									
12+00	208.1	197.15	11.0									
	208.5	197.37	11.1	12+33.2								
13+00	209.0	197.83	11.2									
14+00	209.8	198.51	11.3									
15+00	211.3	199.19	12.1									
12+00	211.6	199.35 OUT	12.3									
		199.45 IN	12.2	15+24.5								
16+00	213.0	199.97	13.0	12+23.2								
17+00	212.3	200.65	11.7									
13+00												
	212.6	200.73 OUT	11.9									
		201.57 IN	11.0	17+12.4								
18+00	214.0	202.45	11.6									
19+00	213.8	203.45	10.4									
15+00												
	215.0	204.05 OUT	11.0									
		204.15 IN	10.9	19+59.5	19+65.5		95108367		8447 F 35th		9-7-95	
20+00	215.8	204.55	11.3									
LINE 2 21+00	217.2	205.55	11.7									
22+00	218.0	206.55	11.5									
17+00												
	217.8	207.35 OUT	10.5									
		207.45 IN	10.4	22+80.0	22+83.0		075547		3526 Comataco		11-30-79	
23+00	217.7	207.65	10.1									
24+00	218.5	208.65	9.9									
25+00												
	220.9	209.65	11.3	25+00.0	25+05.9		12393		8610 F 34th N.		8-23-84	
26+00	224.1	210.05	14.1									
27+00	223.0	210.45	12.6									
28+00	224.1	210.85	13.3									
22+00	224.2	211.03 OUT	13.2									
		211.16 IN	13.0	28+46.4	29+61.2		063977		3434 Comataco		4-19-78	
29+00	224.6	211.38	13.2	22+80								
30+00												
	225.0	211.78	13.2	30+00.0								
31+00	227.3	212.18	15.1									
32+00	228.8	212.59	16.2									
	228.8	212.62	16.2	32+06.3	12" STUB E							
LINE 2 0+00	208.5	197.80	10.7	0+00=12+33.2 LINE 1								
1+00	208.3	198.20	10.1		1+24		050453		8381 F 35th N.		7-22-75	
2+00	208.6	198.60	10.0									
	208.6	198.60	10.0	2+01.0								
3+00	208.7	199.00	9.7									
4+00	210.1	199.40	10.7		4+68.0		2909		8225 E 35th N		3-23-81	
5+00	209.5	199.80	9.7									
	209.0	200.00	9.0	5+50.0								
6+00	209.1	200.20	8.9									
7+00	209.4	200.60	8.8									
	209.6	201.00	8.6	8+00.5								
(SEE NEXT PAGE)												

#26114 - 9/12/90 - 8620 F 34th - Darrell Williams - N/C (new MH constructed - Ran 6" sch 35 E and 6" MH stub)
 #8447 F 35th (60' of ABS (WT 810) & approx 100' + of 4" sch 40 PVC)