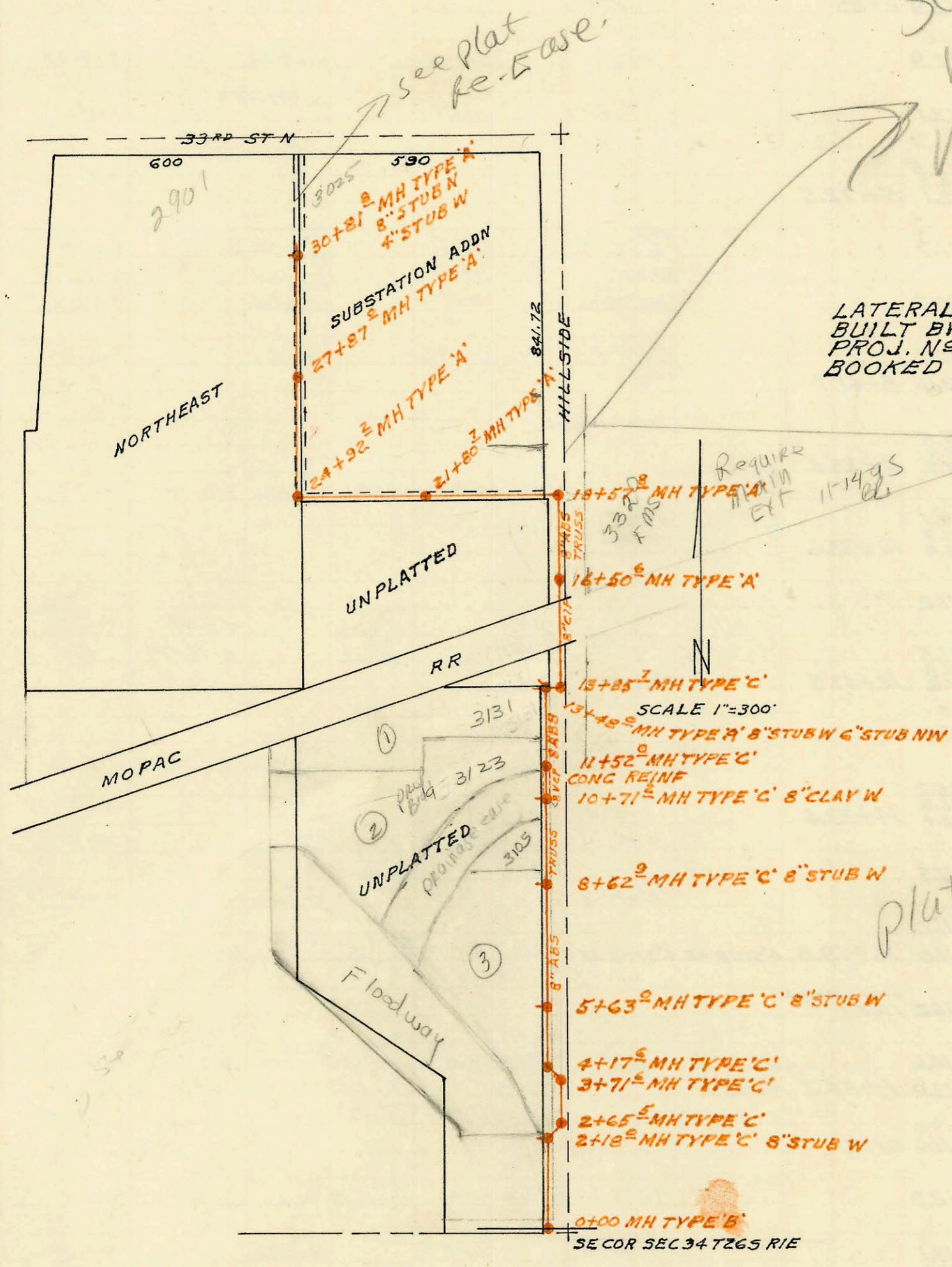


SAN SEWER EXTENSION OF  
 LAT 2 SUB 17 SS N22 TO  
 LT 1 BLK A PRITCHARD ADDN  
 BUILT BY: DULLING CONST. CO.  
 PROJ. N2 DBKW 705053  
 BOOKED 1-5-76 FROM PLAN  
 on map

*Sewer Maint  
 Div. Must  
 make Taps  
 into ABS pipe  
 per Calvin Fusit  
 4/16/04*



LATERAL 29 SAN SEWER N23  
 BUILT BY: UTILITY CONT. INC.  
 PROJ. N2 DBKL 575074  
 BOOKED 1-15-76 FROM 1H184  
 on map

*BR*

*Require  
 MH in  
 EX 11-14-95*

*Plat 10-29*

*Fee in lieu of  
 Main May be dup  
 see Better  
 1-11-05*

CONSTRUCTION RECORD

SERVICE RECORD

STATION	ELEVATION		Depth	MANHOLE	4-INCH "Y" BRANCHES		No. of Permit		House Number		DATE OF PERMITS	
	Ground	Grade			North West	South East	North West	South East	North West	South East	North West	South East
SAN SEWER EXT of LAT 2 SUB 17 55 N <sup>o</sup> 22 TO LT 1 BLKA PRITCHARD ADDN												
0+00	131.4	127.75	3.7									
	132.0	128.00	4.0	0+63		4" STUB SW						
LATERAL 29 SAN SEWER N <sup>o</sup> 23												
0+00	148.5	134.33	14.2	0+00								
1+00	147.3	134.73	12.6									
2+00	146.8	135.13	11.7									
	146.2	135.21 OUT	11.0	2+18.0		8" STUB W						
		135.51 IN	10.9									
	149.0	135.47 OUT	13.5	2+65.5								
		135.57 IN	13.4									
3+00	149.0	135.73	13.3									
	148.8	135.99 OUT	12.8	3+71.6								
		136.09 IN	12.7									
4+00	147.3	136.23	11.1									
	147.7	136.32	11.4	4+17.6								
		136.42	11.3									
5+00	147.5	136.72	10.8									
	147.0	136.93 OUT	10.1	5+63.0		8" STUB W						
		137.93 IN	9.1									
6+00	147.5	138.13	9.4									
7+00	147.0	138.53	8.5									
8+00	146.9	138.93	7.8									
	147.0	139.13	7.9	8+62.9		8" STUB W						
9+00	146.6	139.33	7.3									
10+00	144.3	139.73	4.6									
	148.0	140.01	8.0	10+71.2		8" STUB W						
11+00	143.0	140.13	2.9									
	148.0	140.34	7.7	11+52.0		11+84.0		0785	2131 Hillside		3-9-81	
12+00	147.6	140.53	7.1									
13+00	149.9	140.93	9.0									
	150.7	141.12 OUT	9.6	13+48.0		6" STUB NW 8" STUB W		91-2000-00650 17654-7	3131 N Hillside	Repair	1-6-2000 3-27-91	
		141.22 IN	9.5									
	153.2	141.37 OUT	11.8	13+85.7								
		141.47 IN	11.7									
14+00	153.4	141.53	11.9									
15+00	154.8	141.93	12.9									
16+00	155.3	142.31	13.0									
	155.2	142.51	12.7	16+50.6								
17+00	155.8	142.71	13.1									
18+00	156.2	143.11	13.1									
	156.4	143.34 OUT	13.1	18+57.8								
		143.44 IN	13.0									
19+00	155.0	143.61	11.4									
20+00	153.2	144.01	9.2									
21+00	152.3	144.41	7.9									
	151.1	144.73	6.4	21+80.7								
22+00	151.0	144.81	6.2									
23+00	150.2	145.21	5.0									
24+00	150.0	145.61	4.4									
	150.0	145.98 OUT	4.0	24+92.2								
		146.08 IN	3.9									
25+00	150.1	146.11	4.0									
26+00	151.6	146.51	5.1		26+27.2							
27+00	151.4	146.91	4.5					10763				
	152.4	147.26	5.1	27+87.0								
28+00	152.5	147.31	5.2									
29+00	154.3	147.71	6.6									
30+00	156.2	148.11	8.1									
	157.6	148.44	9.2	30+81.8		8" STUB N 4" STUB W		262018	3025 E. 33rd St.		7-13-77	

Wichita animal shelter address changed to 3303 N Hillside 5-7-84