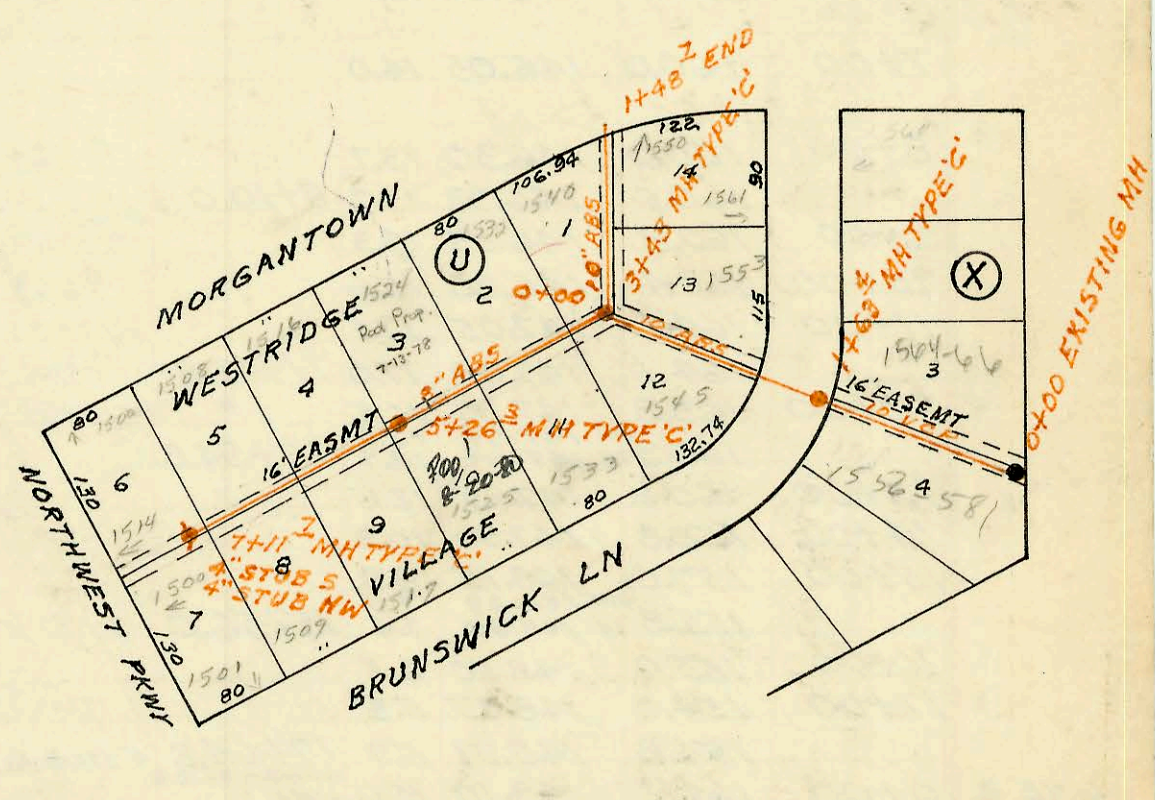


LATERAL 1 MAIN 2 WESTLINK SEWER
 BUILT BY: MID STATES CONST. CO.
 PROJ. N^o DBKL 572049
 BOOKED 2-20-76 FROM CLG 06

LATERAL 79 SOUTHWEST INTERCEPTOR
 BUILT BY: UTILITY CONT. INC.
 PROJ. N^o DBKL 575066
 BOOKED 3-5-76 FROM DCD 120



CONSTRUCTION RECORD

SERVICE RECORD

| STATION | ELEVATION | | Depth | MANHOLE | 4-INCH "Y" BRANCHES | | No. of Permit | | House Number | | DATE OF PERMITS | |
|--|-----------|--------|-------|----------|---------------------|------------|---------------|------------|--------------|------------|-----------------|------------|
| | Ground | Grade | | | North West | South East | North West | South East | North West | South East | North West | South East |
| LATERAL 1 MAIN 2 WESTLINK SAN SEWER | | | | | | | | | | | | |
| 0+00 | 154.5 | 139.70 | 14.8 | 0+00 | +45. | | | 057047 | | 201 | | 8-4-76 |
| 1+00 | 154.9 | 140.10 | 14.8 | | +79.1 | | | 57048 | | 1202 | | 8-4-76 |
| 2+00 | 156.0 | 140.50 | 15.5 | | 1+46.5 | | | 57049 | | 1211 | | 8-4-76 |
| 3+00 | 157.2 | 140.90 | 16.3 | | 1+67. | | | 57050 | | 1213 | | 8-4-76 |
| 3+00 | 157.2 | 140.92 | 16.3 | 3+04.4 | | 2+33.4 | | 061422 | | 1221 | | 6/6/77 |
| 4+00 | 158.2 | 141.30 | 16.9 | | | 3+22.2 | | 062070 | | 1231 | | 7-14-77 |
| 5+00 | 158.2 | 141.70 | 16.5 | | | 4+12.2 | | 062951 | | 1245 | | 9-8-77 |
| 6+00 | 157.4 | 142.10 | 15.3 | | | 4+86.8 | | 065387 | | 1303 | | 3-15-78 |
| 6+00 | 157.4 | 142.14 | 15.3 | 6+08.8 | | 5+55.2 | | 065387 | | 1307 | | 4-19-76 |
| 7+00 | 157.0 | 142.50 | 14.5 | | | 5+66.8 | 4" sch | 065387 | | 1311 | | 11-23-74 |
| 8+00 | 156.6 | 142.90 | 13.7 | | | 5+70.8 | 40 PVC | 065387 | | 1317 | | 4-19-76 |
| 9+00 | 156.5 | 143.30 | 13.2 | | | 6+42.2 | | 065387 | | 1317 | | 4-19-76 |
| 9+00 | 156.5 | 143.38 | 13.1 | 9+20.8 | | 6+71.6 | | 065387 | | 1323-25 | | 4-19-76 |
| 10+00 | 156.6 | 143.70 | 12.9 | | | 7+55 | | 061423 | | 1331 | | 6-6-77 |
| 11+00 | 157.0 | 144.10 | 12.9 | | | 8+56.5 | | 062950 | | 1337 | | 9-8-77 |
| 12+00 | 157.2 | 144.50 | 12.7 | | | 9+51.1 | | 062960 | | 1345 | | 9-8-77 |
| 12+00 | 157.5 | 144.89 | 12.9 | 12+24.5 | | 10+04.5 | | 065388 | | 1351 | | 3-15-78 |
| 13+00 | 157.5 | 145.00 | 12.5 | | | 10+75.4 | | 062653 | | 1357-59 | | 8-19-77 |
| 13+00 | 157.4 | 145.21 | 12.2 | 13+24.7 | | 11+65.6 | | 062653 | | 1357-59 | | 8-19-77 |
| 14+00 | 157.4 | 145.50 | 11.9 | | | 12+24.5 | | 062653 | | 1357-59 | | 8-19-77 |
| 15+00 | 157.6 | 145.90 | 11.7 | | | 13+69.7 | | 062653 | | 1357-59 | | 8-19-77 |
| 15+00 | 157.7 | 146.01 | 11.7 | 15+27.7 | | 14+28.8 | | 062653 | | 1357-59 | | 8-19-77 |
| 16+00 | 158.0 | 146.30 | 11.7 | | | 15+47.7 | | 062653 | | 1357-59 | | 8-19-77 |
| 17+00 | 157.1 | 146.70 | 10.4 | | | 16+49.2 | | 062653 | | 1357-59 | | 8-19-77 |
| 17+00 | 156.9 | 146.76 | 10.1 | 17+13.2 | | 16+65.2 | | 062653 | | 1357-59 | | 8-19-77 |
| LATERAL 79 SOUTHWEST INTERCEPTOR SEWER | | | | | | | | | | | | |
| LINE 1 0+00 | 137.3 | 131.56 | 5.7 | EXISTING | 0+24.7 | | | 12361 | | 1556-8 | | 10-22-84 |
| 1+00 | 137.8 | 131.86 | 5.9 | | | | | | | | | |
| 2+00 | 140.4 | 132.05 | 8.4 | 1+63.4 | | | | | | | | |
| 3+00 | 140.7 | 132.46 | 8.2 | | | 2+76.4 | | 062007 | | 1553 | | 7-13-77 |
| 3+00 | 142.0 | 132.59 | 9.4 | 3+43.0 | | 3+02.4 | | 062006 | | 1545 | | 7-13-77 |
| 4+00 | 144.7 | 133.52 | 11.2 | | | 4+12.5 | | 058680 | | 1533 | | 11-15-76 |
| 5+00 | 147.0 | 134.92 | 12.1 | | | 4+89.5 | | 061662 | | 1529 | | 6-17-77 |
| 6+00 | 147.2 | 136.32 | 10.9 | 5+26.3 | | 5+72.2 | | 059918 | | 1518 | | 2-15-77 |
| 7+00 | 148.2 | 137.72 | 10.5 | | | 6+89.7 | | 059917 | | 1508 | | 2-15-77 |
| 7+00 | 148.4 | 137.93 | 10.5 | 7+11.7 | | 4" STUB NW | 4" STUB S | 059921 | | 1509 | | 12-27-77 |
| 0+00 | 142.0 | 132.70 | 9.3 | 0+43.2 | | | | 059151 | | 1540 | | 12-17-76 |
| 1+00 | 141.0 | 133.00 | 8.0 | | | | | | | | | |
| 1+48.7 | 141.0 | 133.15 | 7.9 | PLUG | | | | 059121 | | 1561 | | 12-16-76 |

26478-11-7-90 - 10315 W-13th - New QUICK TRIP - Bob Dodd - 4" ABS 40 tied into existing sewer 45' S of mt 13724.7