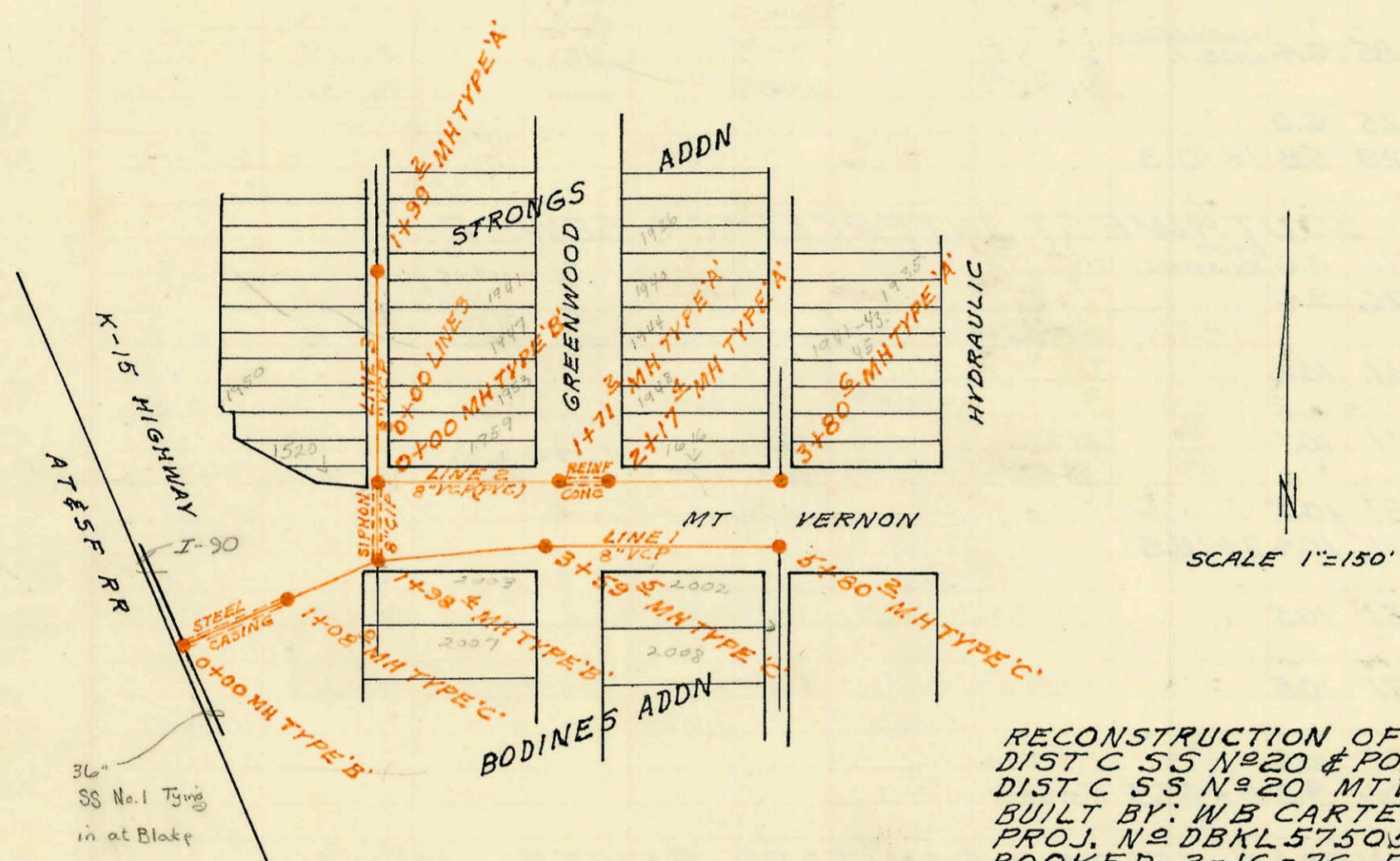


LATERAL 11 MAIN 16 WAR INDUSTRIES SEWER  
 BUILT BY: UTILITY CONTRACTORS INC  
 PROJ. NO DBKL575051  
 BOOKED 3-12-76 FROM 1H84

1710 Harry  
 770 E Harry &  
 1251 Longfellow tie  
 together on one line & tap  
 MH 3743 6' above flow.  
 Line Brake down when 1251  
 ties to pipe line out side  
 MH. - Lines must be separated  
 a new taps made with in  
 2' of Bottom - old tap must be  
 slo BK



RECONSTRUCTION OF PORTION  
 DIST C SS No. 20 & PORTION of LAT 18  
 DIST C SS No. 20 MTVERNON & K15  
 BUILT BY: WB CARTER CONST. CO.  
 PROJ. NO DBKL575059  
 BOOKED 3-16-76 FROM 271Y

CONSTRUCTION RECORD

SERVICE RECORD

STATION	ELEVATION		Depth	MANHOLE	4-INCH "Y" BRANCHES		No. of Permit		House Number		DATE OF PERMITS	
	Ground	Grade			North West	South East	North West	South East	North West	South East	North West	South East
LATERAL II MAIN 16 WAR INDUSTRIES SEWER												
LINE 1 0+00	143.3	132.48	10.8									
	145.8	132.65	13.2									
		132.85	13.0	0+15.0								
1+00	146.9	133.83	13.1									
2+00	148.0	134.98	13.0									
	148.0	135.00	13.0	2+01.5								
3+00	146.1	136.60	9.5									
		136.70	9.4	2+82.9								
3+00	147.1	137.03	10.1									
4+00	148.4	138.00	10.4									
	149.5	138.10	10.3	3+49.8								
	149.5	138.50	11.0									
5+00	152.5	139.29	13.2									
	152.8	139.48	13.3									
		139.58	13.2	5+23.8								
6+00	153.0	140.72	12.3	5+80.2	MAN Tap		C65632		1207-11			3-27-78
	152.6	140.82	12.2		5+91.9		C54089		1217-19			3-27-78
		141.23	11.4		6+62.8		C54090		1223-25			3-9-76
7+00	153.7	143.28	10.4									
	154.6	143.82	10.8	7+26.3								
						6" STUB SW	C54091		1229-318			3-9-76
LINE 2 0+00	148.0	138.07	9.9	0+00=2+01.5								
				LINE 1								
1+00	151.7	140.41	11.3		0+48.8	0+40	C54718	C56190	1200-02	1201-03		4-8-76
	154.7	142.51	12.2	1+87.6	1+17	1+04.6	C54719	C59355	1206-08	1208-09		1-4-77
					1+75	1+70	C54720	C54724	1210-14	1213-15		4-8-76
					2+58		C54721		1218-20	1219-21		4-8-76
2+00	155.0	142.80	12.9			2+39.2		C54723	1219-21	1237-25		4-8-76
3+00	158.2	145.08	13.1		3+31.6	6" stub SE	C54722	C73948	1224-26	1225-27		8-28-77
	159.7	146.95	12.8	3+79.3		6" STUB NE 6" STUB SW	C54721	C54721	1230-32	1231-33		6-27-76
						5" STUB						
RECONSTRUCTION of PORTION DIST C 5520 & PORTION LAT 18 DIST C 55 N <sup>o</sup> 20												
LINE 1 0+00	101.7	87.79		0+00								
1+00	101.6	88.97	12.5									
	101.5	89.09	12.4	1+08.0								
		89.24	10.6									
	99.8	89.34	10.5	1+98.4	SIPHON N							
2+00	99.6											
3+00	99.3	89.54	9.8									
	98.2	89.66	8.5	3+59.5								
4+00	98.2	89.74	8.5									
5+00	98.5	89.94	8.6									
	97.6	90.10	7.5	5+80.2								
LINE 2 0+00	99.4	90.44	9.0	0+00	SIPHON S							
1+00	100.2	90.69	9.5									
	99.0	90.87	8.1	1+71.2								
2+00	98.6	90.99	7.9	2+17.4								
	98.9											
3+00	99.0	91.19	7.8									
	98.2	91.40	6.8	3+80.6								
LINE 3 0+00	99.4	91.10	8.3	0+00=0+00								
				LINE 2								
					0+05 W	0+44.5 E	C53027		15208			1-5-76
					0+92.5 W	0+95 E	C53028	C53024	13508	19538		1-5-76
1+00	101.6	91.50	10.1		1+62.5 W	1+45 E			19473			1-5-76
	101.2	91.80	9.4	1+99.2					19473			1-5-76
					2+29	2+20.5	C53029	C53026	1942	1941		1-5-76