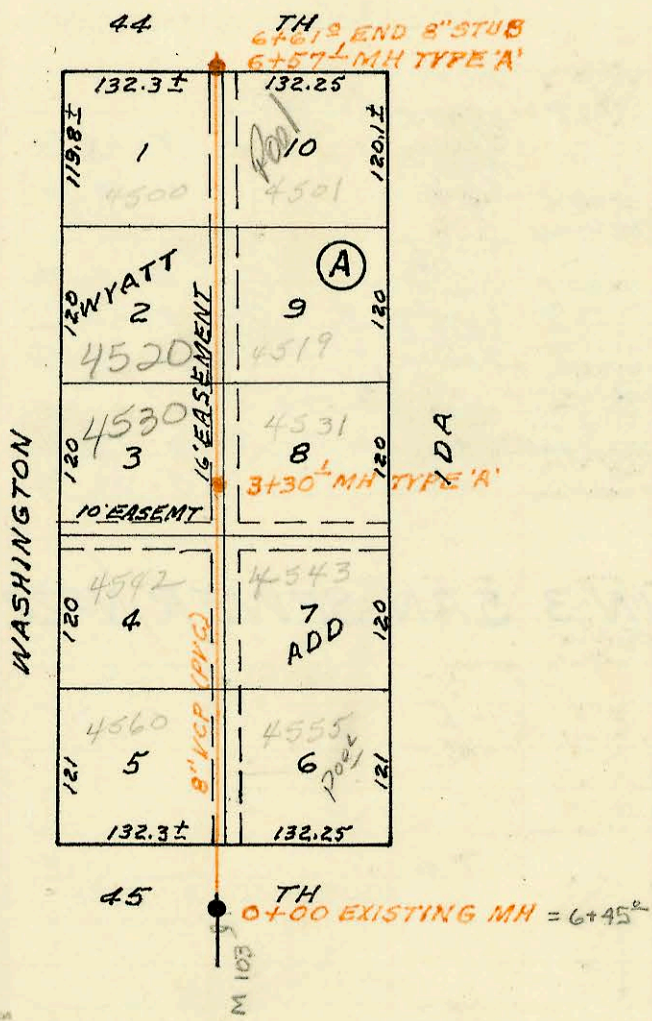


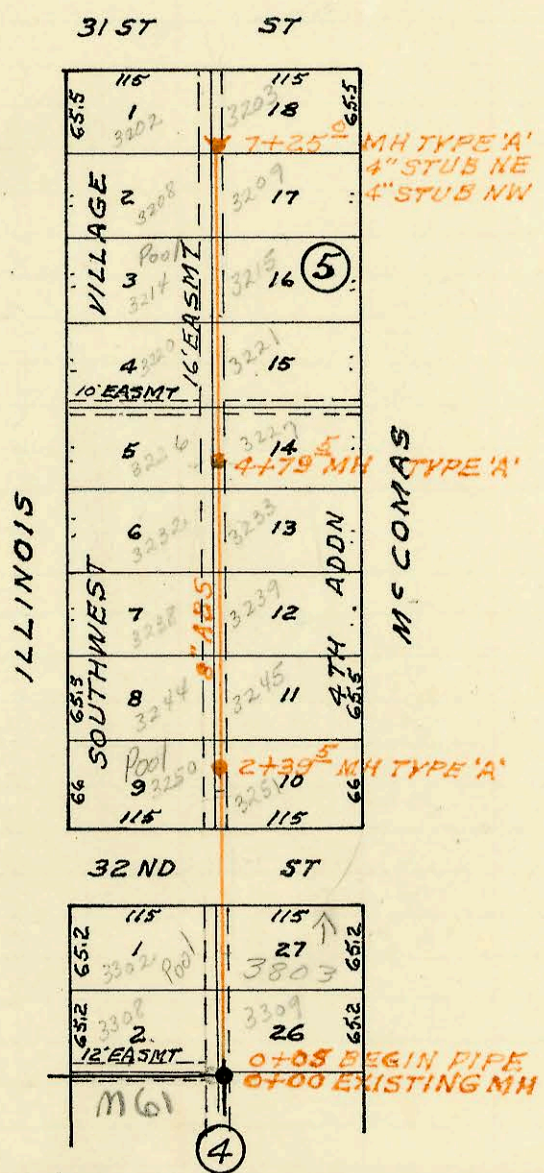
SCALE 1"=150'

LOT 3 BLKA SWEETBRIAR SAN SEWER  
BUILT BY: MID STATES CONST. CO.  
PROJ N<sup>o</sup> DBKW706001  
BOOKED 4-20-76 FROM CLG 14



SCALE 1"=150'

LATERAL 39 MAIN 1 SWI  
BUILT BY: W B CARTER CONST. CO.  
PROJ. N<sup>o</sup> DBKL575025  
BOOKED 4-20-76 FROM 1H 68



SCALE 1"=150'

LATERAL 7 MAIN 23 SAN SEWER N<sup>o</sup>22  
BUILT BY: WOODSIDE CONST. CO.  
PROJ. N<sup>o</sup> DBKL575014  
BOOKED 4-21-76 FROM SS JK#5

CONSTRUCTION RECORD

SERVICE RECORD

STATION	ELEVATION		Depth	MANHOLE	4-INCH "Y" BRANCHES		No. of Permit		House Number		DATE OF PERMITS	
	Ground	Grade			North West	South East	North West	South East	North West	South East	North West	South East
LOT 3 BLKA SWEETBRIAR SAN SEWER												
0+00	126.3	122.20	4.1	0+00								
1+00	128.0	122.60	5.4			1+49.3		C54750	2150 W 21st			4-12-76
2+00	128.5	123.00	5.5									
	128.4	123.40	5.0	3+00				C58274 C68711	2140 W, 21st 2130 W, 21st	(Banana)		10/21/76 10-4-78
LATERAL 39 MAIN 1 SW INTERCEPTOR												
0+00	84.2	76.94	7.3	0+00 EXISTING	1+10.6	1+23.6		C61326 C55822	4560 S. Washington	4555 Ida		5-29-77 6-9-76
1+00	85.3	77.14	8.2									
2+00	85.7	77.34	8.4			2+08.2		C55821	4543 Ida			6-9-76
					2+40.1			C62032	4547 S. Washington			7-14-77
3+00	85.3	77.54	7.8									
	85.1	77.60	7.5	3+30.1	3+58.1 TAP			21056	4530 Washington			7-11-88
						3+50.1		C57223	4531 Ida			8-13-76
4+00	85.0	77.74	7.3									
					tap 4+55.1			C71309	4520 Washington			4-19-79
5+00	84.7	77.94	6.8			5+12.5		10595	4519 Ida			4-9-84
6+00	85.0	78.14	6.9		6+49.2	tap 6+30.1		C55879	4500 S. Washington	4501 IDA		6/11/76 6-20-7
	85.0	78.25	6.8	6+57.1	8'STUB N							
LATERAL 7 MAIN 23 SAN SEWER No 22												
0+00	101.0	93.02	8.0	0+00 EXISTING	0+12.3	0+14.1		C65226 C62572	3308 S. Illinois	3309 S. McCona		3-6-78 8-25-77
1+00	100.3	93.42	6.9		TAP 0+79.4	tap 0+94.8		C62048	3302 S. Illinois	3243 W 32nd		7-14-77 11-18-76
2+00	100.4	93.82	6.6									
	100.2	93.98	6.2	2+39.5	2+29.2			C69452	3250 S. Illinois	3201 S McCona		11-15-78 11-4-76
					2+10.7			C64451	3244 S. Illinois			11-15-78
3+00	100.2	94.22	6.0		3+03.5			C58490	3245 S McCona			11-4-76
					3+67.6	3+47.3		C69450	3238 S. Illinois	3239 S McCona		11-15-78 2-25-77
4+00	100.5	94.62	5.9		3+98.5	4+04.0		C69449	3232 S. Illinois	3233 S McCona		11-15-78 8-30-77
	100.7	94.94	5.8	4+79.5	4+16.5	4+64.7		C69448	3226 S. Illinois	3227 S McCona		11-15-78 10-22-76
					5+29.5			C60443	3220 S. Illinois	3221 S McCona		3-21-77
5+00	100.7	95.02	5.7		5+65.4			C69447	3214 S. Illinois			11-15-78
					6+05			C58318	3215 S McCona			10-22-76
6+00	101.2	95.42	5.8		5+91.0			C69446	3209 S. McCona			11-15-78
					6+61.5			C58317	3208 S. Illinois	3209 S McCona		10-22-76
7+00	101.7	95.82	5.9			6+56.4		C69445	3202 S. Illinois			11-15-78
	101.7	95.92	5.8	7+25.0	4'STUB NW 4'STUB NE			C57905				9-28-76