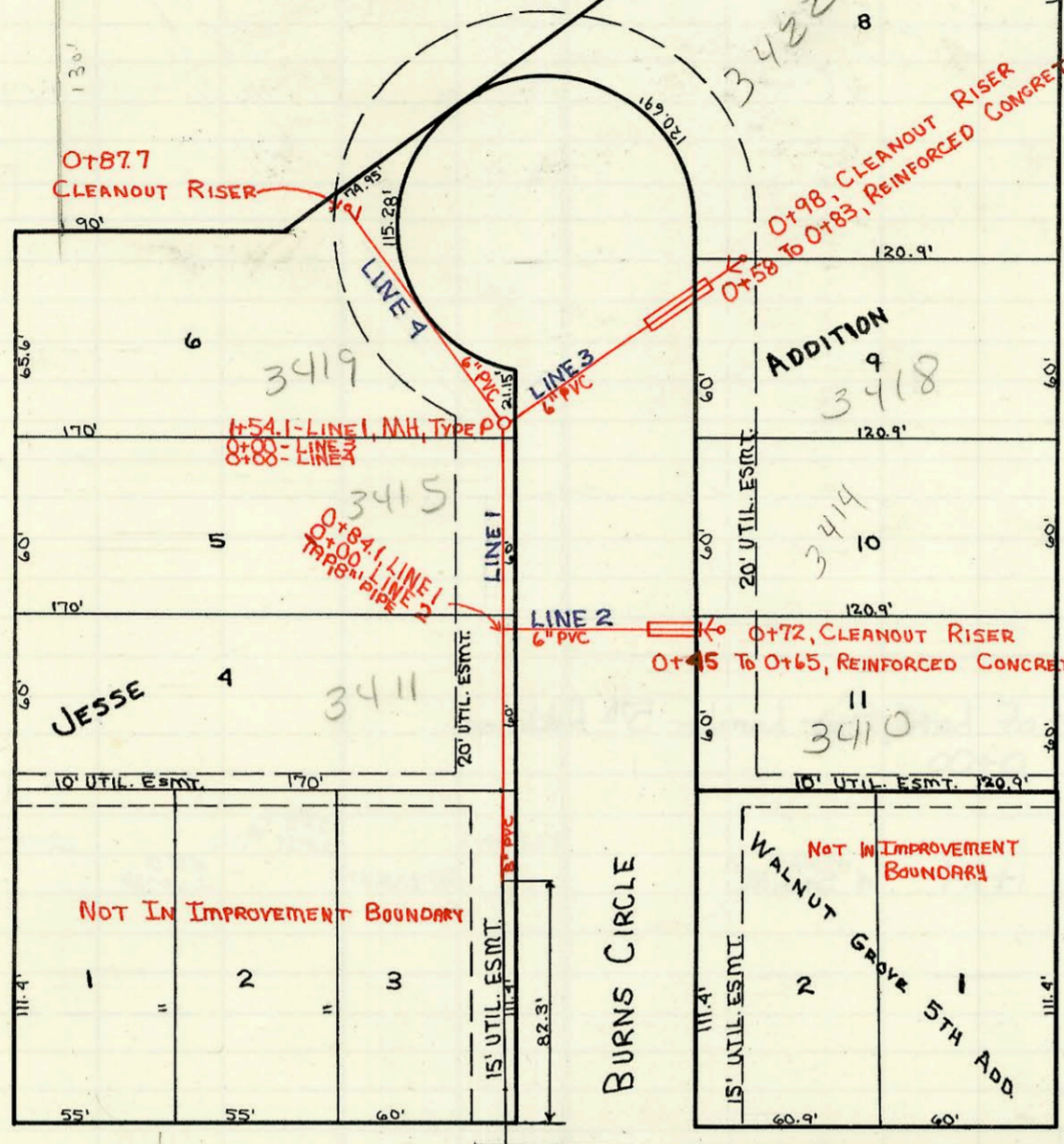


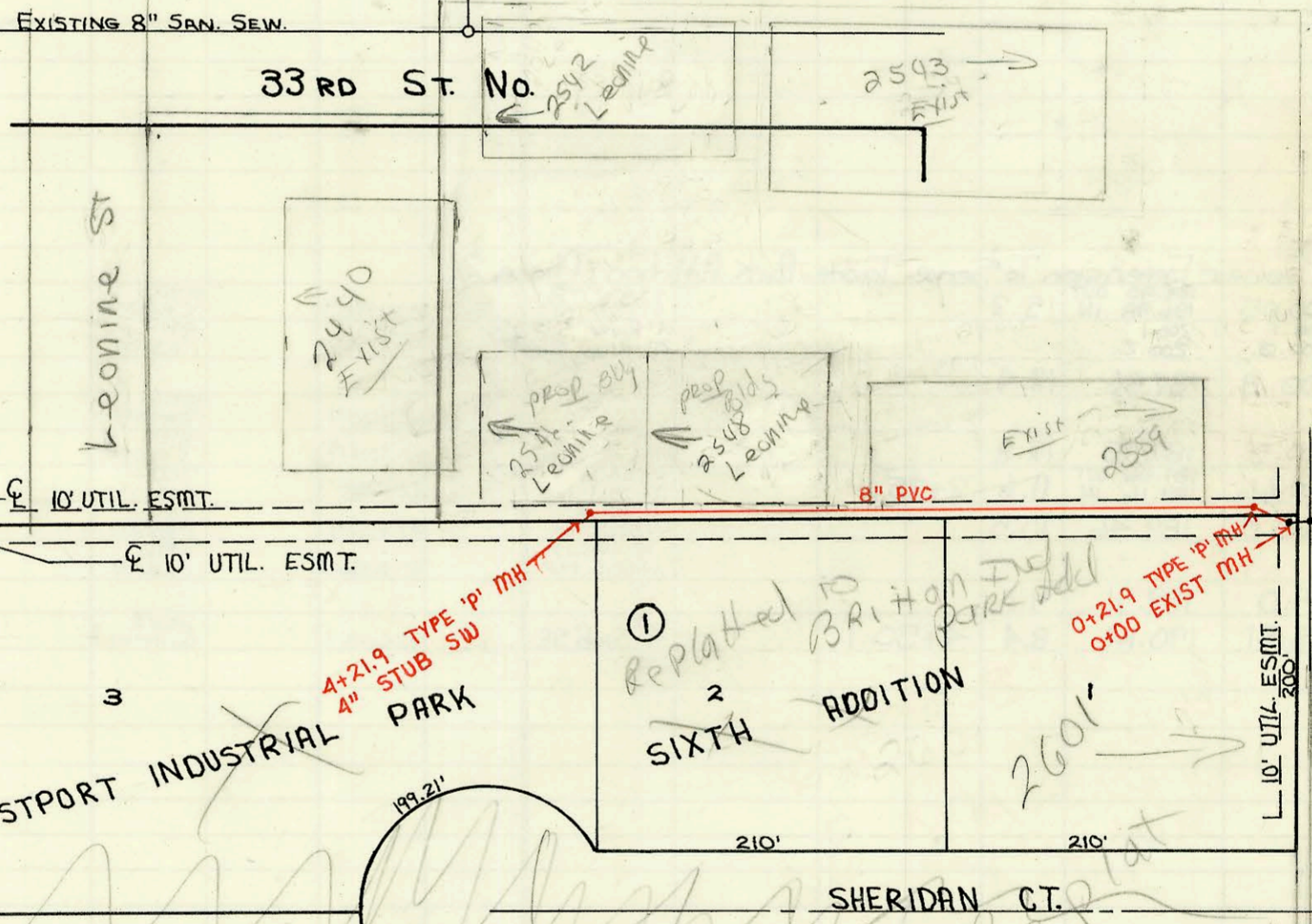
PRIVATE SANITARY SEWER EXTENSION TO SERVE JESSE ADDITION  
PRIVATE PROJECT No. 271 PPS (607861)  
BUILT BY UTILITY CONTRACTORS, INC.  
BOOKED 11-25-91 FROM AS BUILTS

3475 N. ARMSTRONG  
Letter Recd 5-13-91 from  
Russell Shonk, prop owner,  
advising he is aware bid  
sewer is installed a 1/8" per  
ft drop and will not hold city  
responsible for its proper operation  
He insisted as installed  
sewer remain  
BK 5-13-91



SCALE: 1" = 60'

TRAP AREA



SCALE: 1" = 100'

PRIVATE SANITARY SEWER TO SERVE LOTS 1, 2, + 3 ; BLOCK 1,  
WESTPORT INDUSTRIAL PARK SIXTH ADDITION  
PRIVATE PROJECT No. 305 PPS (607861)  
BUILT BY DULING CONSTRUCTION CO., INC.  
BOOKED 2-12-92 FROM AS BUILTS



CONSTRUCTION RECORD						SERVICE RECORD						
STATION	ELEVATION		Depth	MANHOLE	4-INCH "Y" BRANCHES		No. of Permit		House Number		DATE OF PERMITS	
	Ground	Grade			North West	South East	North West	South East	North West	South East	North West	South East
Private Sanitary Sewer Extension To Serve Jesse Addition												
LINE 1	0+00	130.6	124.68	5.9	0+00							
						4" SOK 35 1+19.0 tap		#1523		3411 BURNS CR		11-28-91
	1+00	130.1	125.08	5.7		4" SOK 35 1+14.1 tap see below		91-32437		3415 BURNS CR		8-20-91
		130.0	125.30	4.7				27206		3417 BURNS CR		3-6-91
LINE 2	0+84.1-Line 1 0+00	130.3	125.02 OUT 125.70 IN	5.3	0+84.1-Line 1 0+00	4" SOK 35	4" SOK 35			3414 AURNS	3410 BURNS CR	4-12-93
LINE 3	0+72	129.80	126.37	3.4	1+54.1-Line 1 0+00	4" NE	4" SE	93-7860	93-77947			4-12-93
LINE 4	0+98	129.1	126.34	2.8		4" N	4" E	75-17647	92-44977	3422 BURNS	3418 BURNS CR	2-8-95
	0+87.7	128.4	126.74	2.1		4" N		95-14877 92-26537		3475 ALMSTROM	see below	2-1-95 10-11-93
Private Sanitary Sewer To Serve Lots 1, 2, & 3; Block 1, Westport Industrial Park Sixth Addition												
	0+00	103.8	96.16 OUT 97.28 IN	7.6	0+00							
		103.9	97.37 OUT 97.37 IN	6.5	0+21.9	4" SOK 35 0+72.9		91-35727		2601 SHERIDAN	(East cont)	10-22-91
	1+00	103.1	97.68	5.4								
	2+00	103.4	98.08	5.3		4" ABS 40 2+38.9		95-51447		2557 SHERIDAN		4-11-95
						4" SOK 35 2+82.9		97-10217		2542 LEONINE		6-12-97
	3+00	103.4	98.48	4.9		4" SOK 35 2+84.9	4" SOK 35 3+51.9	97-10217	91-35737	2546 LEONINE	2601 SHERIDAN	6-12-97
						4" SOK 35 3+64.3		94-16107		2601 SHERIDAN		10-22-91
	4+00	103.2	98.88	4.3								
		104.0	98.97	5.0	4+21.9	4" STUB SW						

Form #192-020 (July, 1981)

3419 N BURNS CR - Orig Permit # 92-84367 was pulled 6-10-92 under wrong address of 3410 N BURNS CR. ERRORS discovered when A.L. pulled permit # 93-77947 on 4/12/93 for 3410 N BURNS CR

3419 N Burns Circle - 3/7/91 - 91-18911-7 - 5 1/2 ft South of MH - Drainsayer made tap - on 8" Line w/saddle - 4" SOK 35

95-14877 3475 ALMSTROM - Rep 50 at house