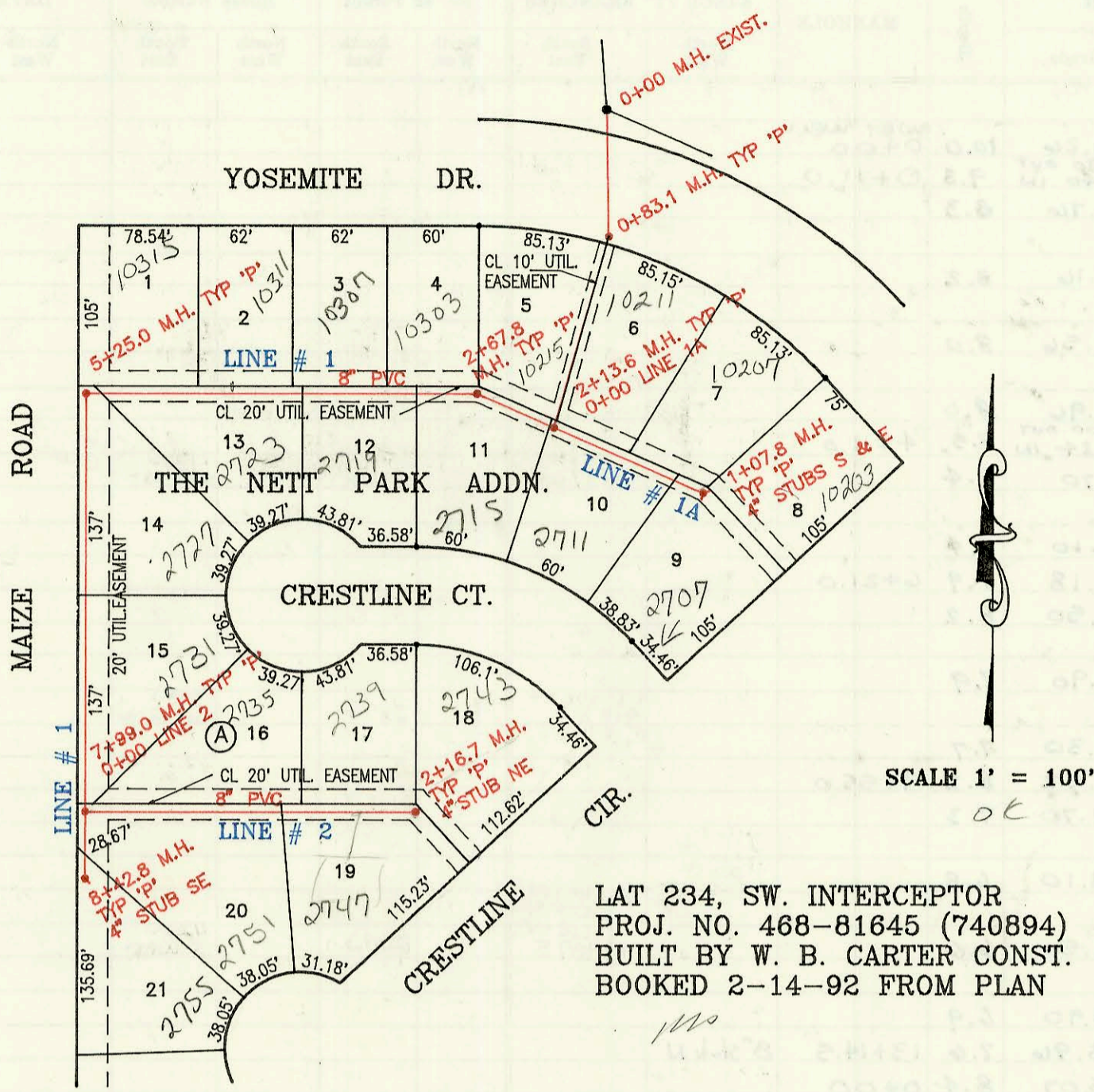


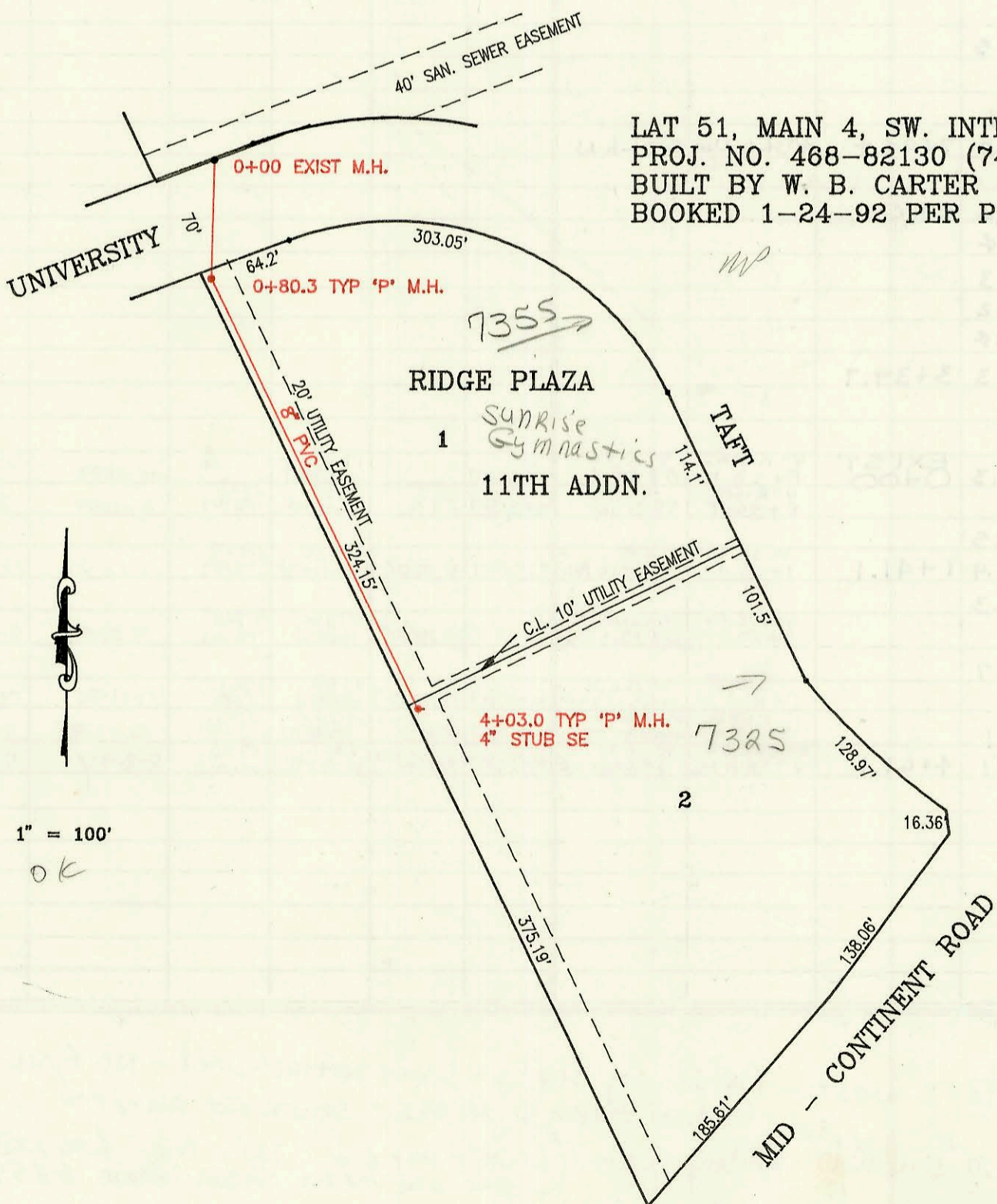
CONSTRUCTION RECORD

SERVICE RECORD



LAT 234, SW. INTERCEPTOR
 PROJ. NO. 468-81645 (740894)
 BUILT BY W. B. CARTER CONST.
 BOOKED 2-14-92 FROM PLAN

SCALE 1" = 100'



LAT 51, MAIN 4, SW. INTERCEPTOR
 PROJ. NO. 468-82130 (740829)
 BUILT BY W. B. CARTER CONST.
 BOOKED 1-24-92 PER PLAN

1" = 100'

CONSTRUCTION RECORD						SERVICE RECORD						
STATION	ELEVATION		Depth	MANHOLE	4-INCH "Y" BRANCHES		No. of Permit		House Number		DATE OF PERMITS	
	Ground	Grade			North West	South East	North West	South East	North West	South East	North West	South East
LAT 23, SW I												
LINE 1												
0+00	141.89	131.30	10.6	EXIST. 0+00								
	143.5	132.15 OUT 132.25 IN	11.4	0+83.1		7" Pvc 40 w/ WFL 4" PVC 40		92-28464-7		10211 W Yosemite		9-11-92
1+00	143.8	132.42	11.4									
2+00	145.5	133.44	12.1									
	145.9	133.58 OUT 133.68 IN	12.3	2+13.6	4" PVC 40 2+42.8 tap	4" SDR 35 2+50.6 tap	92-21845-7		10215 W Yosemite Dr	2715 Crestline	8-9-93	
	146.3	133.90	12.4	2+67.8	4" sch 40 2+85.8	4" SDR 35 3+32.8 tap	92-24752-7 92-4307-7		10303 Yosemite	2719 Crestline	9-16-93	7-27-92
3+00	146.2	134.03	12.2		4" SDR 35 3+69.8 tap	4" SDR 35 3+32.8 tap	92-31849-7		10207 Yosemite	2719 Crestline		10-28-92
4+00	146.0	134.43	11.6		4" sch 40 4+28.0	4" PVC 40 4+32.8 tap	92-12211-7		10207 Yosemite	2723 Crestline		7-15-92
5+00	145.7	134.83	10.9		4" sch 40 4+28.0	4" SDR 35 5+00.0 tap	94-1002-7		10311 W Yosemite			5-2-94
	149.7	134.93 OUT 135.03 IN	10.8	5+25.0			93-27087-7		10315 Yosemite			2-4-93
6+00	146.0	135.33	10.7			4" SDR 35 5+09.0 tap		92-6730-7		2727 S Crestline		5-8-92
7+00	146.3	135.72	10.6			4" SDR 35 7+16.4		94-3154-7		2731 Crestline		3-7-94
	146.3	136.12 OUT 136.22 IN	10.2	7+99.0								
	146.3	136.39	10.2	8+42.8		4" SDR 35		95-6545-7		2755 Crestline		5-5-95
LINE 1A												
0+00	145.9	133.48	12.2	0+00	4" sch 40 2+13.6 L-1	4" SDR 35 0+30.0 tap	92-28491-7 92-6733-7		10211 Yosemite	2711 S Crestline	9-11-92	5-8-92
1+00	144.4	134.11	10.3	1+07.8	4" sch 40 7+99 L-1	4" SDR 35 0+91.7 tap	92-718-7		10207 Yosemite	2704 S Crestline	3-31-93	11-3-92
LINE 2												
0+00	146.3	136.22	10.1	0+00	4" sch 40 7+99 L-1	4" SDR 35 0+91.7 tap	92-2836-7 92-40080-7		10207 Yosemite	2704 S Crestline	3-8-94	11-3-92
1+00	146.9	136.62	10.3			4" SDR 35 0+91.7 tap	92-13355-7		2735 Crestline	2751 Crestline	5-2-93	6-18-93
2+00	146.0	137.02	9.0			4" SDR 35 1+96.7	93-6616-7		2739 Crestline	2744 Crestline	3-25-93	1-4-93
	146.3	137.09	9.2	2+16.7	4" sch 40 4" stub NE	4" PVC 40 1+59.7 tap	92-5780-7		2743 S Crestline			4-21-92
LAT 51, MAIN 4, SW I												
0+00	137.5	125.00	12.5	EXIST. 0+00								
	137.2	125.40 OUT 127.40 IN	11.8	0+80.3								
1+00	137.0	127.48	9.1			4" sch 40 1+85.5		96-74231-7		7355 Taft		8-28-96
2+00	136.8	127.88	8.9									
3+00	136.6	128.29	8.3									
4+00	137.00	128.70	8.3	4+03.0	4" sch 40 4" stub SE			91-34933-7		7325 W Taft		10-10-91
2000-02495- 12/1/00- The Fagan Co - Repair - 4" sch 40 - Tied into exist bldg sewer - 1000 gal Mud + Oil Interceptor - 2TWINCO, 1 KICKOUT, 3H45 - Interceptor w/invert												