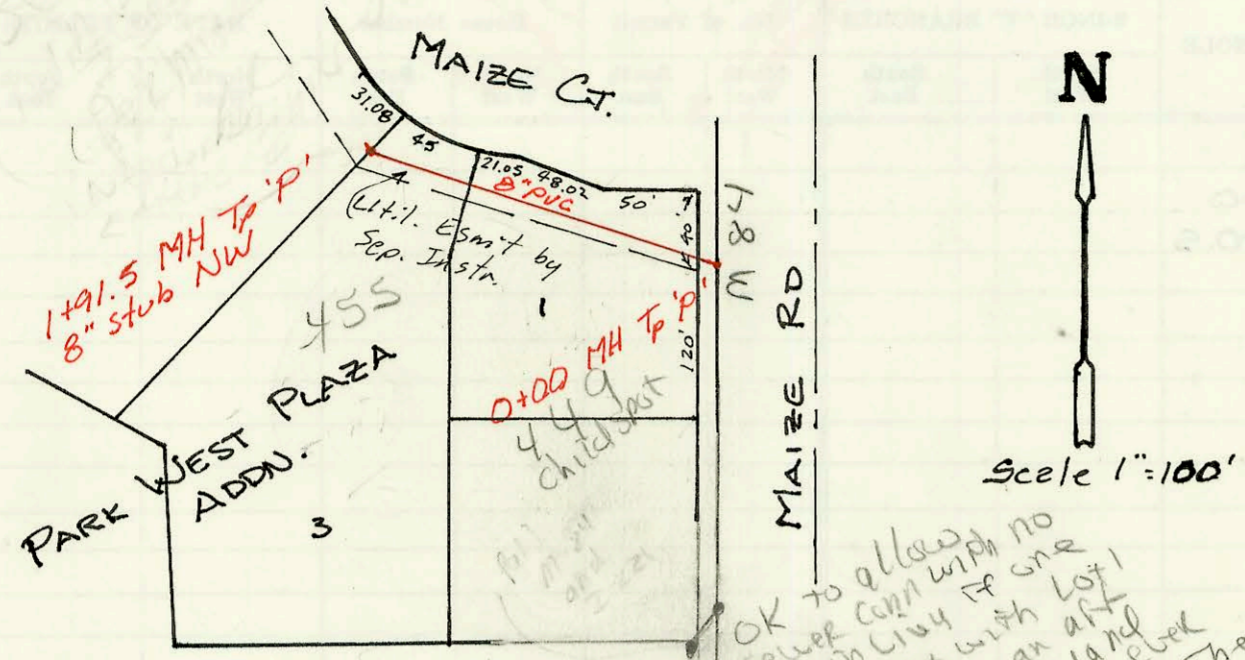


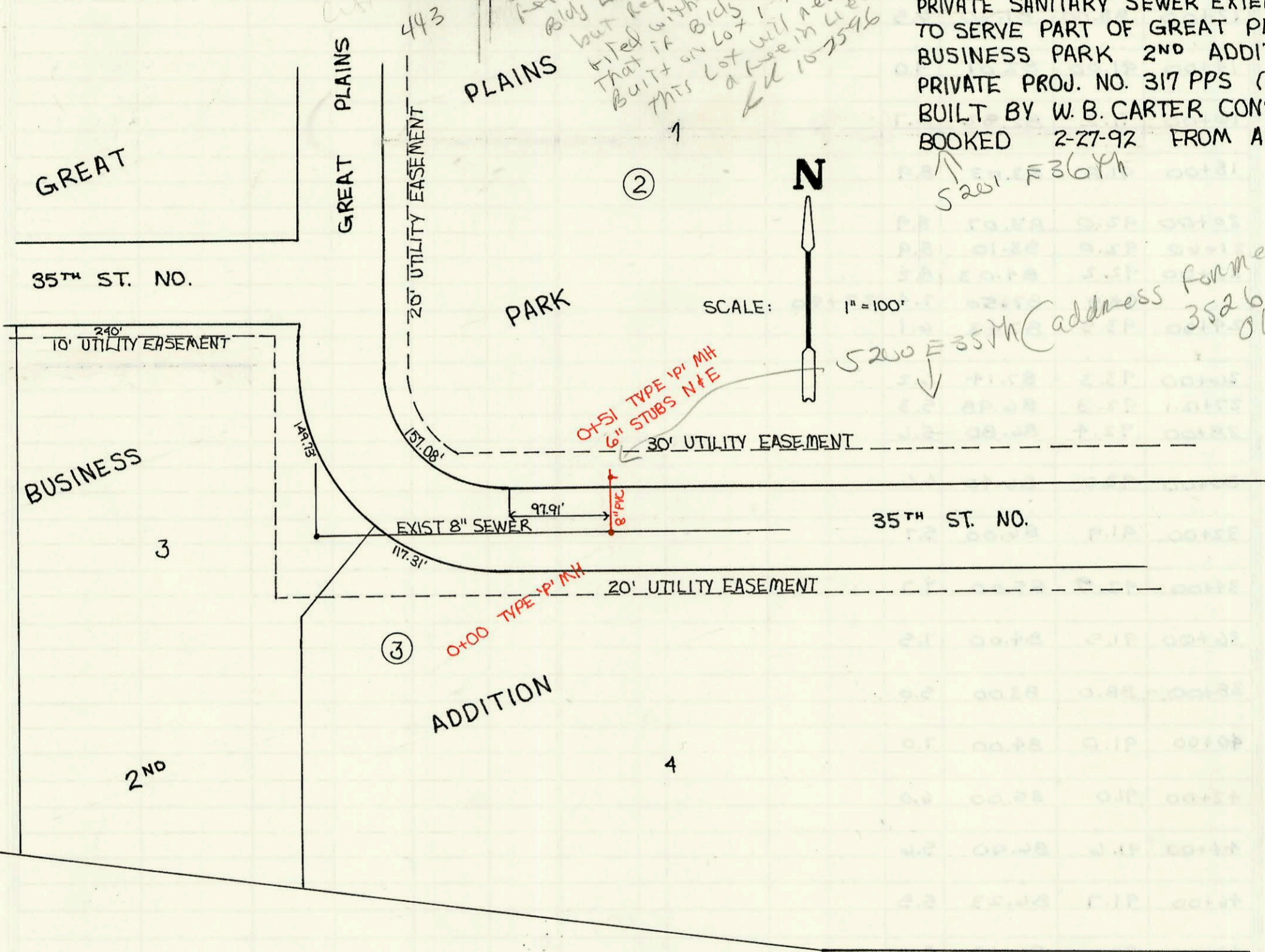
35th Drive
35th Street
35th Street

LAT 94, WESTLINK SEWER
468-82031 (740506)
Built By MEIS CONST
Booked 2-19-92 from Plan
NY

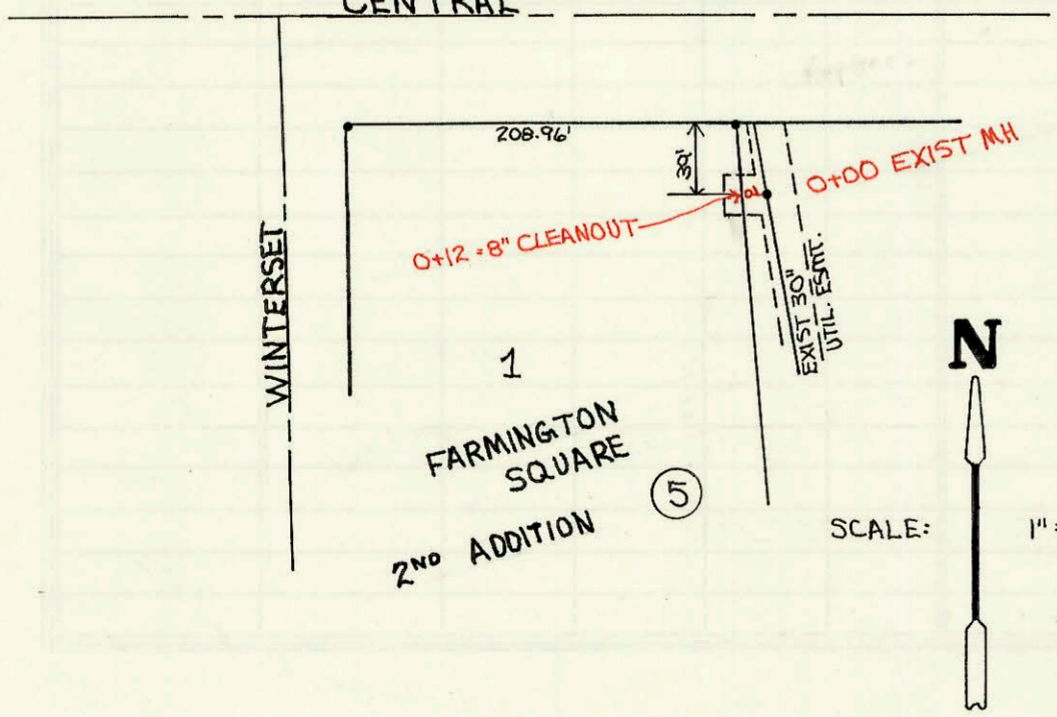


PRIVATE SANITARY SEWER EXTENSION
TO SERVE PART OF GREAT PLAINS
BUSINESS PARK 2ND ADDITION
PRIVATE PROJ. NO. 317 PPS (607861)
BUILT BY W.B. CARTER CONST. CO.
BOOKED 2-27-92 FROM AS BUILTS

5201 E 36th



CENTRAL



PRIVATE SANITARY SEWER TO SERVE
LOT 1, BLOCK 5, FARMINGTON SQUARE 2ND ADDITION
PRIVATE PROJECT NO. 293 PPS (607861)
BUILT BY DONDLINGER & SONS CONST. CO.
BOOKED 3-18-92 FROM AS BUILTS

Replaces Record
shown in I-225
02
3-19-92

CONSTRUCTION RECORD							SERVICE RECORD					
STATION	ELEVATION		Depth	MANHOLE	4-INCH "Y" BRANCHES		No. of Permit		House Number		DATE OF PERMITS	
	Ground	Grade			North West	South East	North West	South East	North West	South East	North West	South East
LAT 94, WESTLINK SEWER												
0+00	134.00	126.64	7.4	0+00								
1+00	134.2	127.04	7.2									
	135.0	127.41	7.4	1+91.5	8" stub NW	1+81.5						
Private Sanitary Sewer Extension to Serve Part Of Great Plains Business Park 2 nd Addition												
0+00	179.70	170.45 OUT 170.55 IN	9.3	0+00								
	180.30	171.55	8.8	0+51	6" Stub N	6" Stub E						
Private Sanitary Sewer To Serve Lot 1, Block 5, Farmington Square 2 nd Addition												
0+00	122.82	109.17 OUT 113.17 IN	13.7	0+00								
0+12	122.80	113.66	9.1		4" PVC SDR 35 4" wye							