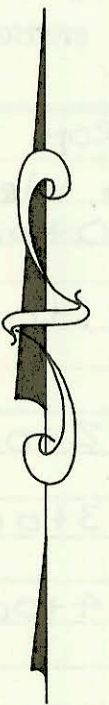
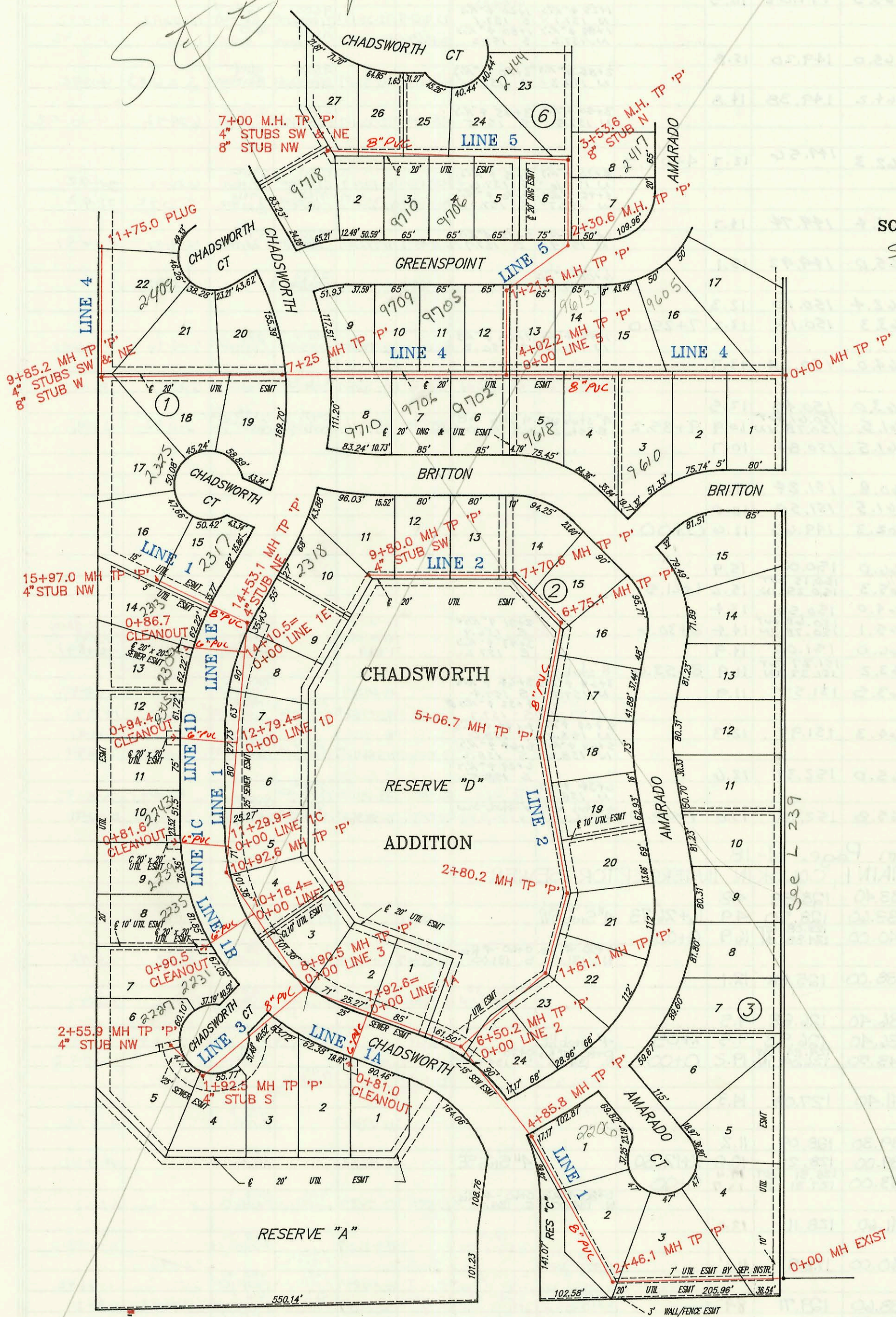


LAT 96, WESTLINK SEWER  
468-82093 (740696)  
BUILT BY UTILITY CONTR.  
BOOKED 2-20-92 FROM PLAN

*SEE NEW PAGE*



SCALE 1" = 150'  
SCALE IS OFF



See L 239

21ST ST NO



LAT 9  
LINE 1

LINE 1A  
LINE 1B  
LINE 1C  
LINE 1D  
LINE 1E  
LINE 2

LINE 3

CONSTRUCTION RECORD						SERVICE RECORD						
STATION	ELEVATION		Depth	MANHOLE	4-INCH "Y" BRANCHES		No. of Permit		House Number		DATE OF PERMITS	
	Ground	Grade			North West	South East	North West	South East	North West	South East	North West	South East
6, WESTLINK SEWER												
0+00	162.0	146.39	15.6									
1+00	162.3	146.57	15.7									
2+00	162.5	146.75	15.8		1+20 4" R.1 N 154.6		72-41256-7		2214 Amarado			11-6-92
3+00	162.5	147.22	15.3	2+46.1				94-7014-7	2210 Amarado			5-12-94
4+00	161.7	147.62	14.1					92-5060-7	2206 Amarado			4-10-92
5+00	161.0	148.12	12.9	4+85.8								
6+00	160.6	148.52	12.1					94-4897-7	2209 N- Amarado			4-6-94
7+00	160.5	149.02	11.5	6+50.2								
8+00	161.0	149.42	11.6									
9+00	161.2	149.88	11.4	8+90.5	4" SDR 35 8+54.5 top 4" SDR 35 9+45.5 top		92-11097-7 73-6974-7		2214 N. Chadsworth 2216 Chadsworth			7-7-92 4-19-93
10+00	162.0	150.32	11.7					93-6336-7	2220 Chadsworth			3-22-93
11+00	162.2	150.79	11.5	10+92.6				72-12963-7	2214 Chadsworth			7-10-92
12+00	163.0	151.22	11.8					92-39254-7	2302 N. Chadsworth			10-28-92
13+00	163.9	151.62	12.3					93-20927-7 74-11160-7	2306 Chadsworth 2310 N Chadsworth			8-3-93 7-7-94
14+00	163.9	152.02	11.9									
15+00	163.8	152.33	11.6	14+53.1	4" stub NE 4" SDR 35		92-24404-7		2314 Chadsworth			9-14-93
0+00 = 7+92.6	163.5	152.91	10.6	15+97.0	4" stub NW 4" SDR 35		92-16025-7		2317 Chadsworth 2321 Chadsworth			9-18-91 7-23-92
0+74.6	161.0	150.86	10.1		4" SDR 35 Wye Conn	4" SDR 35 Wye Conn	94-14728-7	92-948-7	2211 Chadsworth	2207 Chadsworth		9-14-94 6-26-92
0+84.1	162.1	151.94	10.2		4" SDR 35 Wye Conn	4" SDR 35 Wye Conn	91-35531-7	91-23370-7	2235 Chadsworth	2251 Chadsworth		10-16-91 9-13-91
0+75.2	162.7	152.39	10.3		4" Wye N.W 4" SDR 35	6" leader 81/2" in eq 4" SDR 35 6" lead 12179.4 4" SDR 35	92-5058-7	91-33611-7	2243 Chadsworth	2234 Chadsworth		4-10-92 9-25-91
0+88.0	163.2	153.13	10.1		4" Wye N.W 4" SDR 35	4" SDR 35	92-7660-7		2301 Chadsworth			5-21-92
0+78.3	163.8	153.57	10.2			4" SDR 35 14+10.1 top	92-5309-7		2307 Chadsworth			4-16-92
0+00	159.4	148.82	10.6	0+00		4" SDR 35 1+48.0	94-12923-7		2213 Amarado			8-5-94
1+00	160.0	149.22	10.8			4" SDR 35 1+69.7 top	93-23807-7		2217 N. Amarado			9-8-93
2+00	160.0	149.72	10.3			4" SDR 35 2+62.2	94-11477-7		2221 Amarado			1-26-94
3+00	160.0	150.22	9.8	2+80.2		4" SDR 35 3+04.7 top	92-35721-7		2225 Amarado			10-7-92
4+00	160.0	150.62	9.4			4" SDR 35 3+85.2	94-18902-7		2301 Amarado			11-7-94
5+00						4" SDR 35 4+85.7 top	93-6412-7		2305 Amarado			3-24-93
6+00	160.2	151.04	9.2	5+06.7		4" SDR 35 6+10.7 top	92-24856-7		2309 Amarado			8-27-92
7+00	160.5	151.51	9.0	6+75.1		4" SDR 35 6+52.1	94-31507-7		2313 Amarado			3-1-94
8+00	160.9	152.01	8.9		4" SDR 35 7+27.1 top	4" SDR 35 7+50.6	92-12975-7		9613 W. Britton			7-10-92
9+00	161.2	152.30	8.9	7+70.6	4" SDR 35 8+20 top	4" SDR 35 9+19.5 top	94-8297-7		9619 Britton			5-20-94
10+00	161.1	152.52	8.6		4" SDR 35 9+47	4" SDR 35 9+47	92-17433-7		9701 Britton			7-31-92
11+00	161.2	152.92	8.3		4" SDR 35 9+47	4" SDR 35 9+47	92-39819-7		9705 Britton			10-28-92
12+00	161.3	153.24	8.1	9+80.0	4" stub SW	4" SDR 35	94-6667-7		9709 Britton			1-3-94
0+00	161.2	149.88	11.3	0+00		4" SDR 35 0+71.0	91-34328-7		2318 Chadsworth			10-3-91
1+00	161.9	150.28	11.6			4" SDR 35 4" stub S	94-12047-7		2215 Chadsworth			7-19-94
2+00	163.4	150.65	12.8	1+92.5		4" SDR 35 4" stub S	94-5734-7		2217 Chadsworth			4-8-94
3+00	163.4	151.00	12.4	2+55.9	4" stub NW		92-42928-7		2223 N. Chadsworth			11-9-92
							1137		2227 Chadsworth			9-27-91