

LATERAL 97, WESTLINK SEWER
 468-82094 (740878)
 BUILT BY UTILITY CONTR.
 BOOKED 3-4-92 FROM PLAN

SCALE 1" = 150'
 SCALE IS OFF

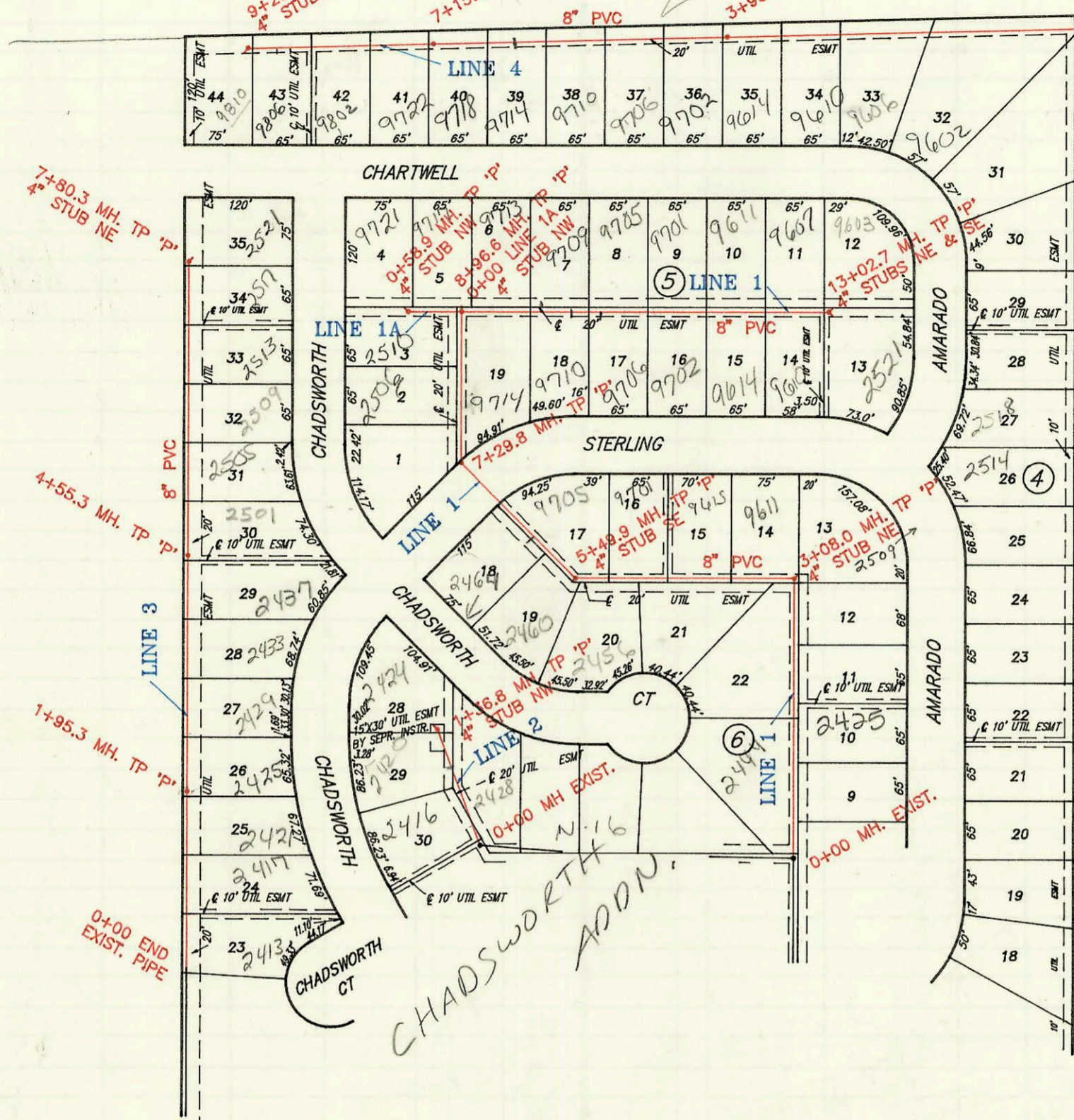
SEE NEW PAGE



SEE L 239
 SEE L 260

80 acres annexed into City of Wichita
to connect to sewer from David Walker BK
12/17/08

Not in B10



7+80.3 MH. TP 'P'
4\"/>

4+55.3 MH. TP 'P'
8\"/>

1+95.3 MH. TP 'P'
10\"/>

0+00 END EXIST. PIPE

9+20.2 MH. TP 'P'
4\"/>

7+15.1 MH. TP 'P'
8\"/>

3+90.0 MH. TP 'P'
8\"/>

0+00 MH. EXIST.

CHARTWELL

STERLING

CHADSWORTH

CHADSWORTH CT

AMARADO

AMARADO

LATERAL 97, WESTLINK SEWER
468-82094 (740878)
BUILT BY UTILITY CONTR.
BOOKED 3-4-92 FROM PLAN

See L260

See L239



SCALE 1" = 150'

CONSTRUCTION RECORD

SERVICE RECORD

STATION	ELEVATION		Depth	MANHOLE	4-INCH "Y" BRANCHES		No. of Permit		House Number		DATE OF PERMITS	
	Ground	Grade			North West	South East	North West	South East	North West	South East	North West	South East
LAT 97, WESTLINK LINE 1												
0+00	165.4	151.37	14.0	0+00								
1+00	164.5	151.77	12.7		4" SDR 35 1+25 4" R's W 156.6	0+60 4" R's E 156.1 1+20 4" R's E 156.4	92-1790-7	92-1786-7	2444 N Chadsworth	2425 Amadeo	10-23-91	2-5-92
2+00	164.8	152.17	12.6			1+90 4" R's E 156.6	2005	92-1785-7	2478 Chadsworth	2501 Amadeo	1-31-92	2-5-92
3+00						4" SDR 35 2+85.0 top 4" stub NE	92-1787-7	92-1787-7	2505 Amadeo	2505 Amadeo		2-5-92
4+00	163.7	152.60 OUT 152.70 IN	11.1	3+08.0	4" SDR 35 3+18.0 top	4" SDR 35 4+13.0 top	93-20955-7	95-8831-7	9111 W Sterling	2504 Amadeo	8-3-94	6-14-95
5+00	164.5	153.07	11.4		4" SDR 35 3+40.6 top	4" SDR 35 5+24.9	93-16197-7	2092	9105 W Sterling	2452 Chadsworth	6-16-93	2-11-92
6+00	165.6	153.47	12.1		4" SDR 35 4+60.9	4" SDR 35 5+71.9	92-5711-7	92-5106-7	9101 Sterling	2456 Chadsworth	4-12-94	4-13-92
7+00	166.1	153.67 OUT 153.77 IN	12.4	5+49.9		4" stub SE		94-6052-7		2460 Chadsworth		4-28-94
8+00	165.2	153.97	11.2		4" SDR 35 6+16.9	4" SDR 35 5+60.9 top	92-6114-7	92-2218-7	2464 Chadsworth	9105 Sterling	4-28-92	8-18-93
9+00	164.0	154.37	9.6									
10+00	164.1	154.89 OUT 154.59 IN	9.6	7+29.8	4" SDR 35 7+98.4		95-7618-7			2506 Chadsworth		5-22-95
11+00	164.7	154.87	9.8									
12+00	165.6	155.26 OUT 155.36 IN	10.3	0+00 LIA 8+96.6	4" stub NW							
13+00					4" SDR 35 9+31.6	4" SDR 40 PVC 9+59.0 top	95-1410-7	73-1846-7	9113 Chartwell	9114 W Sterling	1-31-95	1-26-93
14+00	166.0	155.77	10.2		4" SDR 35 9+86.6	4" SDR 40 PVC 10+16.6	95-9666-7	95-3825-7	9109 Chartwell	9119 Sterling	6-30-95	7-20-95
15+00	166.4	156.17	10.2		4" SDR 35 10+46.7	4" SDR 35 10+51.6	93-1810-7	93-2386-7	9105 Chartwell	9106 Sterling	6-15-93	9-9-93
16+00	166.7	156.57	10.1		4" SDR 35 11+20.7	4" SDR 35 11+43.7	95-4357-7		9101 Chartwell	9102 Sterling	3-22-95	6-22-94
17+00	166.7	156.57	10.1		4" SDR 35 12+28.7	4" SDR 35 12+19.7	94-1411-7	94-1116-7	9101 Chartwell	9102 Sterling	9-2-94	7-7-94
18+00	167.2	156.98	10.2	13+02.7	4" SDR 35 12+54.7	4" SDR 35 12+45.7	95-2223-7	95-1530-7	9107 Chartwell	9110 Sterling	8-8-95	9-27-95
19+00	165.6	155.36	10.2	0+00	4" stub NE	4" stub SE	93-1491-7	93-2285-7	9103 Chartwell	9103 Amadeo	6-11-93	8-25-93
20+00	164.9	155.60	9.3	0+58.9	4" SDR 35 0+33.9	4" stub NW	94-2481-7		9117 Chartwell		2-23-94	
21+00	165.8	152.86	12.9	0+00	4" SDR 35 0+33.9	4" stub NW	93-2505-7		9121 W Chartwell		9-22-93	
22+00	165.7	153.26	12.4		0+20 4" R's W 157.4	0+15.0	92-5225-7		2476 Chadsworth	2476 Chadsworth	4-14-92	5-5-95
23+00	165.4	153.41	12.0	1+36.8	0+90 4" R's W 157.7	4" stub NW	94-721-7		2477 Chadsworth	2477 Chadsworth	1-18-94	
24+00	161.5	151.50	10.0		4" SDR 35 1+36.8		94-1773-7		2474 Chadsworth	2413 W Chadsworth	1-27-94	8-26-92
25+00	161.7	151.90	9.8									
26+00	161.9	152.28	9.6	1+95.3	4" SDR 35 54 stub N. of NP		92-1622-7		2417 N Chadsworth	2417 N Chadsworth		7-28-92
27+00												
28+00	162.0	152.70	9.3		4" SDR 35 2+44.3 top		92-4341-7		2421 W Chadsworth	2425 N Chadsworth		3-30-92
29+00	162.0	153.10	8.9		4" SDR 35 2+97.3 top		92-4688-7		2424 Chadsworth	2424 Chadsworth		7-23-92
30+00	162.1	153.32	8.8	4+55.3	4" SDR 35 3+42.8 top		93-6976-7		2424 Chadsworth	2425 N Chadsworth		4-1-93
31+00	162.3	153.90	8.4		4" SDR 35 4+03.2 top		92-1984-7		2451 W Chadsworth	2501 Chadsworth		8-7-92
32+00	162.5	154.30	8.2		4" SDR 35 4+68.9		94-1713-7		2501 Chadsworth	2505 Chadsworth		10-19-94
33+00	162.6	154.62	8.0	7+80.3	4" SDR 35 5+47.8		95-1947-7		2505 Chadsworth	2505 Chadsworth		11-27-95
34+00	162.1	153.50	8.4									
35+00	162.3	153.90	8.4		4" SDR 35 6+28.3 top		93-2095-7		2509 N Chadsworth			8-3-93
36+00	162.5	154.30	8.2		4" SDR 35 6+90.3		94-3062-7		2513 N Chadsworth			3-9-94
37+00	162.6	154.62	8.0	7+80.3	4" SDR 35 7+21.3	4" stub NE	94-12630-7		2517 N Chadsworth	2517 N Chadsworth		8-5-94
38+00	163.6	151.12	12.5	EXIST 0+00			75-764-7		2521 W Chadsworth			5-22-95
39+00	163.2	151.52	11.7		4" SDR 35 1+24.6 top		93-8700-7		9602 W Chartwell			4-19-93
40+00	162.4	151.92	10.7									
41+00	162.6	151.92	10.7		4" SDR 35 2+10.0		94-1028-7		9606 Chartwell	9610 Chartwell		6-24-94
42+00	162.1	152.32	9.8		4" SDR 35 2+98.0		94-1633-7		9610 Chartwell			10-6-94
43+00	161.7	152.68 OUT 152.78 IN	9.0	3+90.0	4" SDR 35 3+76.0		94-11742-7		9614 W Chartwell			7-20-94
44+00	161.5	153.12	8.4		4" SDR 35 4+96.0		94-14312-7		9702 Chartwell			9-2-94
45+00	161.4	153.52	7.9		4" SDR 35 4+84.0		94-12402-1		9706 Chartwell			8-4-94
46+00	161.3	153.92	7.3		4" PVC 40 5+55.0		94-9059-7		9710 Chartwell			7-13-94
47+00	161.2	153.98	7.2	7+15.1	4" SDR 35 6+27.0		94-1436-7		9714 Chartwell			9-2-94
48+00	161.2	154.32	6.9		4" SDR 35 7+10.1		94-14921-7		9718 W Chartwell			9-15-94
49+00	161.1	154.72	6.4		4" SDR 35 8+5.1		94-10124-7		9722 Chartwell			7-1-94
50+00	161.0	154.80	6.2	9+20.2	4" stub SW		94-15977-7		9804 W Chartwell	9806 Chartwell		10-3-94
51+00							94-15984-7		9810 Chartwell			9-30-94
52+00							94-10489-7		9810 Chartwell			7-1-94

LAT 97, WESTLINK
LINE 1

LINE 1A

LINE 2

LINE 3

LINE 4

