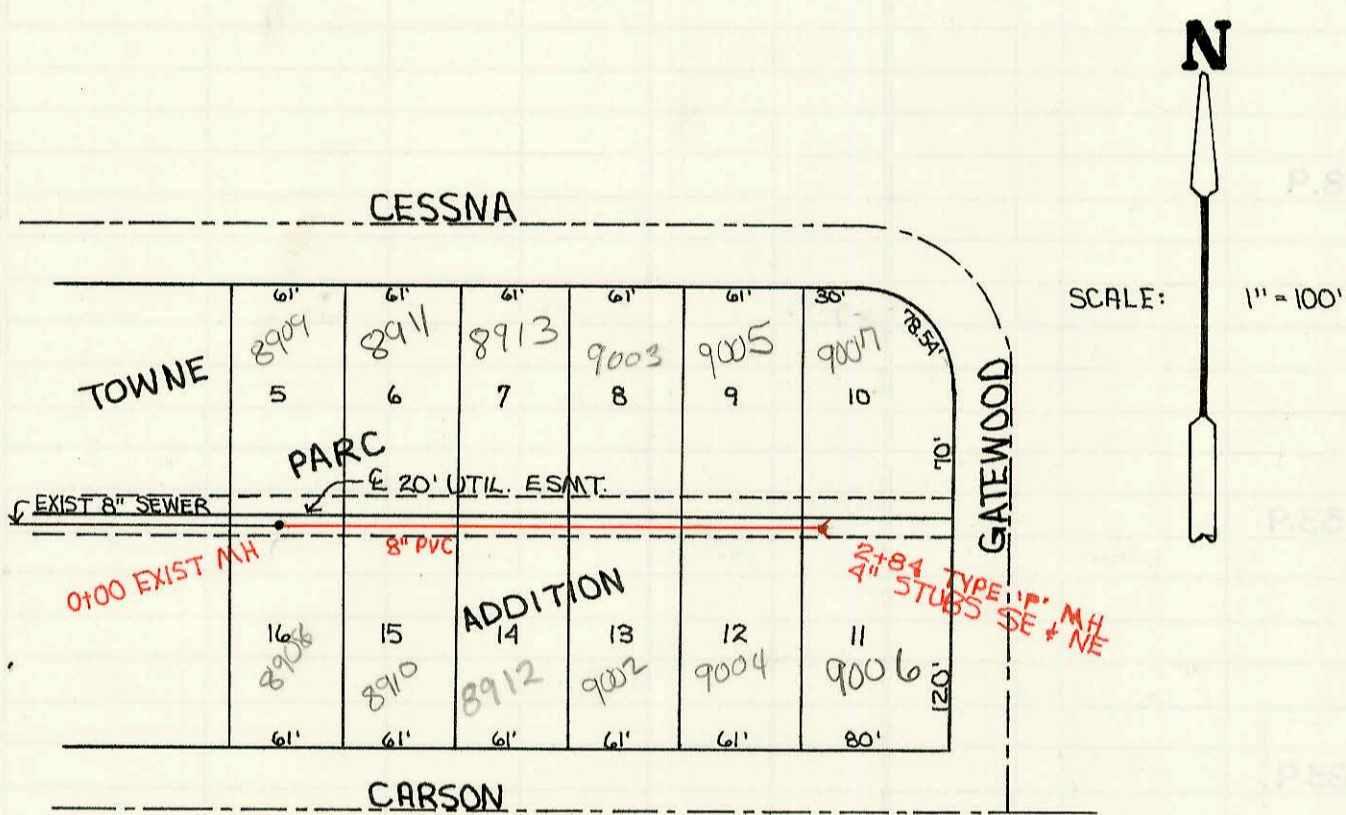
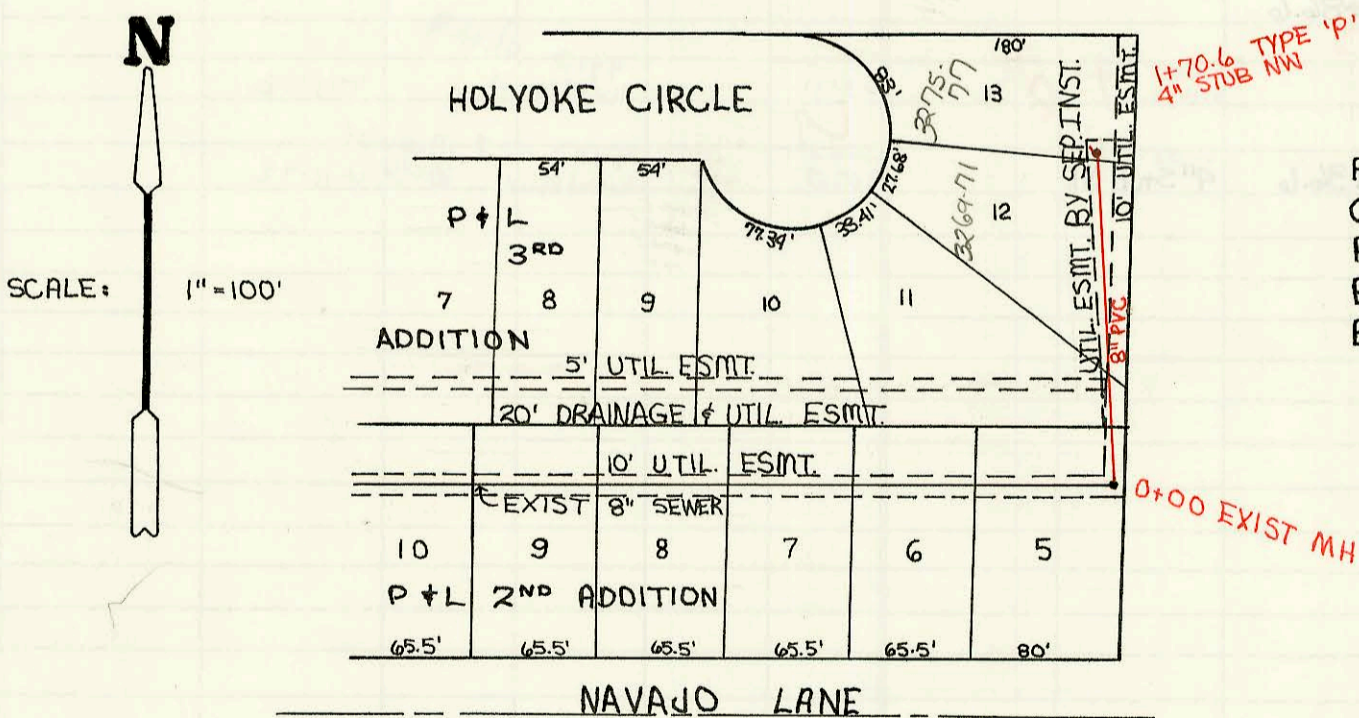


COWSKIN INTERCEPTOR SEWER PUMP STATION  
 PROJ. NO. 468-81964 (6071739)  
 BUILT BY DONDLINGER & SONS CONST. CO.  
 BOOKED 4-14-92 PER PLAN



PRIVATE SANITARY SEWER TO SERVE  
 TOWNE PARC ADDITION - PHASE 3  
 PRIV. PROJ. NO. 323 PPS (607861)  
 BUILT BY W. B. CARTER CONST. CO.  
 BOOKED 4-21-92 FROM AS BUILTS



PRIVATE SANITARY SEWER TO SERVE PART  
 OF P & L 3RD ADDITION  
 PRIV. PROJ. NO. 314 PPS (607861)  
 BUILT BY MCCULLOUGH EXCAVATION INC.  
 BOOKED 4-23-92 FROM AS BUILTS

CONSTRUCTION RECORD						SERVICE RECORD						
STATION	ELEVATION		Depth	MANHOLE	4-INCH "Y" BRANCHES		No. of Permit		House Number		DATE OF PERMITS	
	Ground	Grade			North West	South East	North West	South East	North West	South East	North West	South East
COW SKIN INTERCEPTOR SEWER PUMP STATION												
307+87.7	130.50	119.36	11.1									
308+00	130.90	119.42	11.5									
309+00	132.80	119.89	12.9									
309+27	132.60	120.01	12.6									
310+00	131.60	120.35	11.3									
311+00	127.30	120.82	6.5									
311+17	127.30	120.90	6.4									
312+00	128.10	117.35	10.8									
313+00	120.00	113.32	6.7									
313+29.5	119.60	113.01	6.6									
313+59.5	120.50	112.60	7.9	313+59.5								
0+00	120.60	95.00	25.0	0+00								
	14.75	98.86 OUT 98.95 IN	15.9	0+89.83	54" stub SE	17-195677			2727 Tyler R		11-5-97	
1+00	114.60	98.96	15.6						(odor control unit for sewage treat div OK'd per Jim Tush)			
2+00	114.40	99.01	15.4									
3+00	114.70	99.06	15.6									
3+39.83	114.80	99.08	15.7									
Private Sanitary Sewer To Serve Towne Parc Addition - Phase 3												
0+00	205.12	192.34 OUT 192.48 IN	12.8	0+00								
					4" SDR 35 0+101.0 tap	92-28507	92-5572-7	8911 CASSNA	8910 CARSON		1-27-93	4-21-92
1+00	205.40	192.90	12.5		4" SDR 35 1+01 tap 4" SDR 35 1+90.0 tap	92-258337	92-7917-7	8913 CASSNA	8912 CARSON		9-1-92	6-1-92
					4" SDR 35 1+90.0 tap	92-79187	92-5573-7	9003 E CASSNA	9002 CARSON		6-1-92	4-21-92
2+00	204.20	193.33	10.9			92-4258-7	97-2097-7	9005 E CASSNA	9004 CARSON		3-26-92	11-24-97
	202.73	193.68	9.1	2+84	4" stub NE 4" stub SE	92-4259-7	97-2230-7	9007 E CASSNA	9006 CARSON		3-26-92	12-23-97
Private Sanitary Sewer To Serve Part Of P+L 3RD Addition												
0+00	125.50	113.51 OUT 115.30 IN	12.2	0+00								
					4" PVC 40 1+210.6 tap	92-3207-7		3269-77 S. HOLYOKE CD			3-6-92	
1+00	128.10	116.30	11.8									
	122.84	117.13	5.7	1+70.6	4" PVC 40 4" stub NW	92-3206-7		3275-77 S. HOLYOKE CD			3-6-92	