

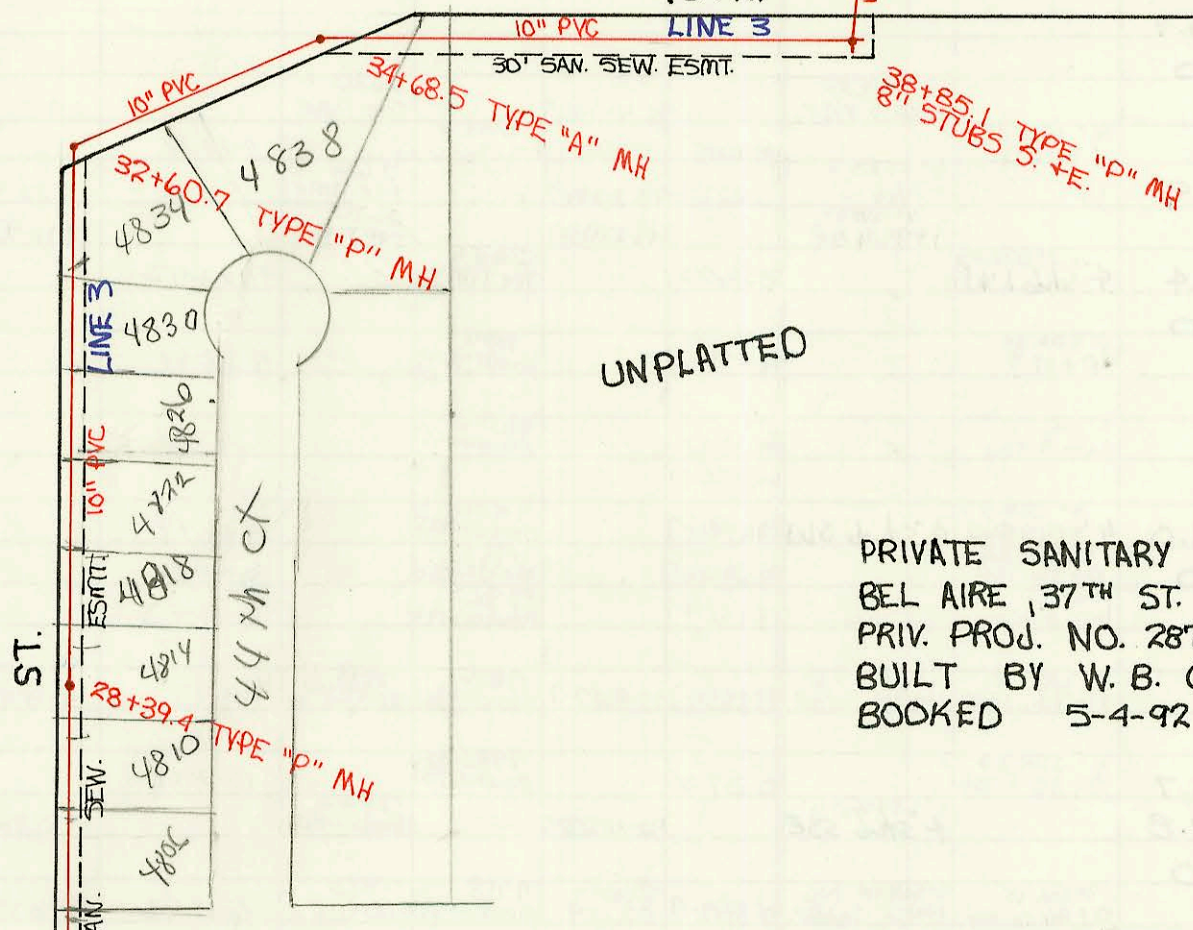
4" x 16.5 TYPE "P" MH
4" STUB SE
REMOVE EXIST M.H.
SEE MIB5

133.59'	133.19'	133.14'	10'	10'	10'	10'	10'	10'	10'	10'	10'	132.18'
II	ALLEY	KR	VEG	ER'S	7	6	5	4	3	ADD	2	1
320'	72'	72'	72'	72.18'	72.18'	70'	65'	65'	65'	65'	75'	132.18'

39+30 to 39+80
50' L.F. Steel
CASING

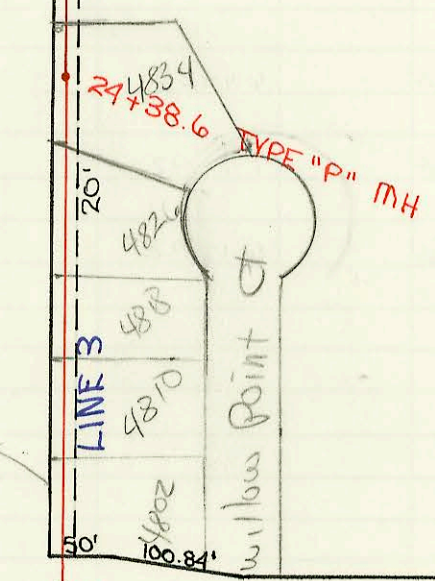
45TH ST.

ST.

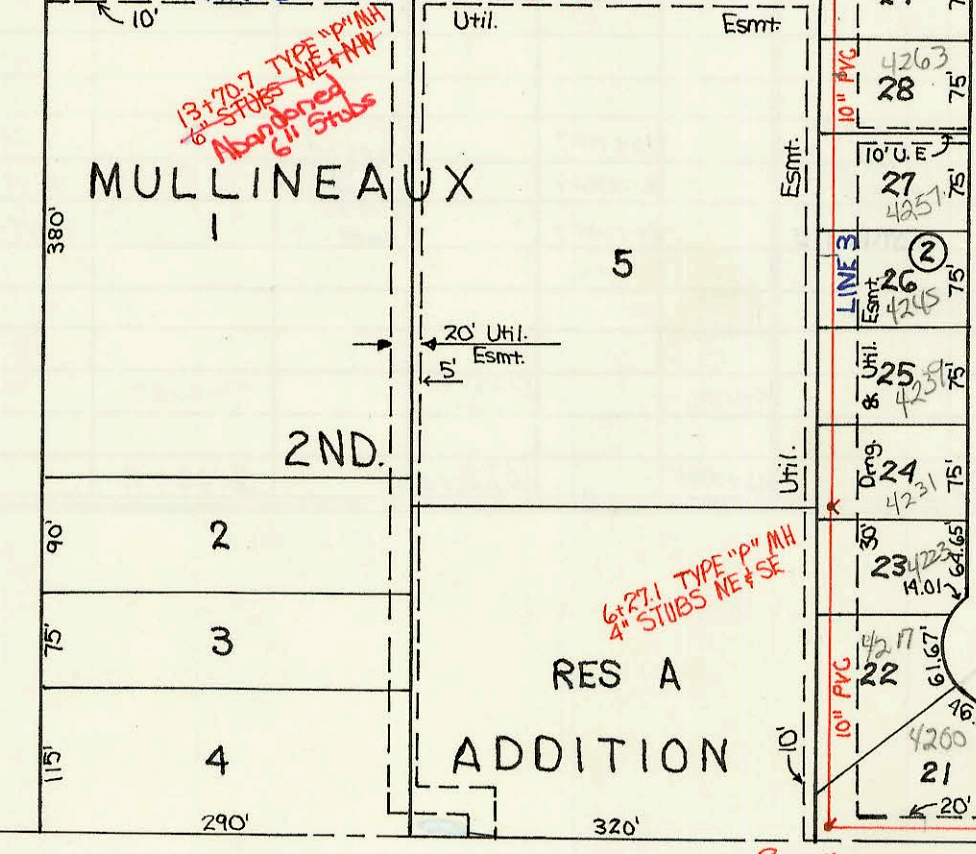
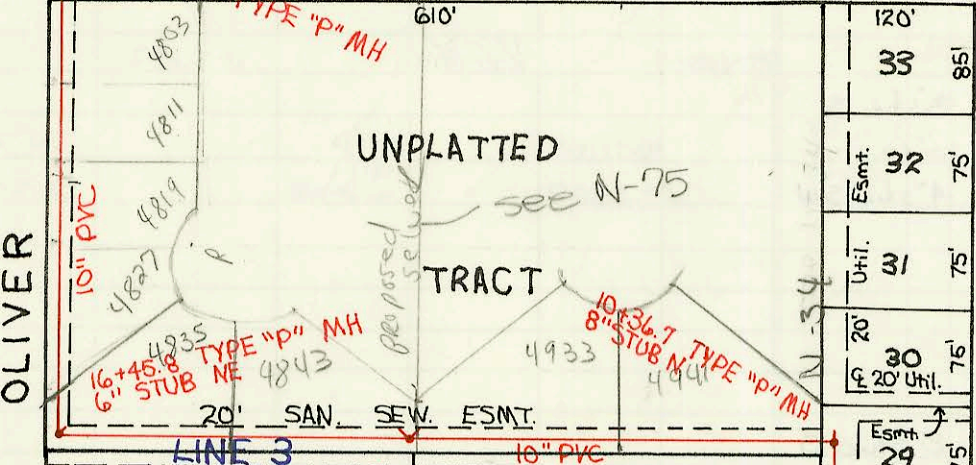


44TH ST

Refer to N 270
Pav. Lot Layout & size



WILLOW POINT



PRIVATE SANITARY SEWER MAIN IN
BEL AIRE, 37TH ST. N. TO 45TH ST. N. (CONT'D.)
PRIV. PROJ. NO. 287 PPS (607861)
BUILT BY W. B. CARTER CONST. CO.
BOOKED 5-4-92 FROM AS BUILTS



SCALE: 1" = 150'

SECTION

LINE

Bel Aire Sewer

ADD.

West Lake

3+76.3 TYPE "P" MH
4" STUB NE

0+00 - LINE 3 TYPE "P" MH
25+60 - LINE 1

LINE 3

CONSTRUCTION RECORD						SERVICE RECORD						
STATION	ELEVATION		Depth	MANHOLE	4-INCH "Y" BRANCHES		No. of Permit		House Number		DATE OF PERMITS	
	Ground	Grade			North West	South East	North West	South East	North West	South East	North West	South East
Private Sanitary Sewer Main In					Bel Aire, 37 th to 45 th				(Cont'd.)			
0+00	209.10	195.48 OUT 197.50 IN	13.6	25+65-LINE 1 0+00	4" SDR 35 0+50.6		2611		4210 Westlake		2-2-94	
1+00	212.00	197.65	14.4									
2+00	212.50	197.81	14.7		1+27-4" Riser N. 201.80 2+00-4" Riser N. 202.10		2562 2503		4206 Westlake 4202 Westlake		7-1-93 7-1-93	
3+00	209.70	197.97	11.7		4" W/40 3+26.3 tap		2476		4205 Westlake		3-25-93	
4+00	208.93 208.20	198.10 OUT 198.23 IN	10.8	3+76.3	4" Stub NE							
5+00	208.20	198.38	9.8					2528		4217 Country Ln		8-31-93
6+00	209.00 209.47	198.51 198.55 OUT 198.58 IN	10.5 10.9	6+27.1	4" Stub NE	4" Stub SE		02403 see below		4223 N Country Ln 4231 N Country Lane		1-7-93
7+00	209.90	198.65	11.3		4" SDR 35 7+32.1 tap 4" SDR 35 8+10.7		2542		4237 Country Ln 4245 Country Ln		9-22-93 10-26-94	
8+00	211.20	198.76	12.4		8+85-4" Riser E. 204.20		2746 2605		4251 Country Ln		1-18-94	
9+00	212.30	198.87	13.4									
10+00	213.80 214.32	198.96 199.62 OUT 199.07 IN	14.8 15.3	10+36.7	8" Stub N			2685		4263 Country Ln		6-15-94
11+00	214.40	199.17	15.2									
12+00	215.60	199.34	16.3									11-15-93
13+00	216.40 217.94	199.51 199.64 OUT 199.69 IN	16.9 18.3	13+70.7	6" Stub NE 6" Stub NW	Abandoned 6" STUBS						
14+00	218.40	199.71	18.7									
15+00	219.70	199.78	19.9									
16+00	219.70 219.14	199.85 199.89 OUT 199.89 IN	19.9 19.3	16+45.8	6" SDR 35 6" Stub NE		2589		4835 Willow Point		12-7-93	
17+00	219.30	199.96	19.3		4" sch 40 17+13.4		2872		4827 Willow Point		8-17-95	
18+00	219.00	200.10	18.9		4" sch 40 18+40.8 Riser 18+49-6" Riser E. 208.70		2874 2873		4819 Willow Point 4811 Willow Point 4803 Willow Point	see below	8-18-95 8-18-95	
19+00	218.50	200.23	18.3		4" sch 40 19+46.0		2927		4803 Willow Point		12-5-95	
20+00	218.70 219.18	200.37 200.43 OUT 200.43 IN	18.3 18.8	20+38.5	4" sch 40 Riser		2981		4822 Willow Point		7-3-96	
21+00	219.60	200.52	19.1		4" sch 40 Riser		2980		4810 Willow Point		7-3-96	
22+00	219.00	200.68	18.3		4" sch 40 Riser		3100		4818 Willow Point		2-18-97	
23+00	218.50	200.83	17.7		4" sch 40 Riser		3044		4826 Willow Point		9-18-96	
24+00	218.60 219.09	200.98 201.04 OUT 201.06 IN	17.6 18.1	24+38.6								
25+00	219.40	201.12	18.3					3204		4806 Willow Point		9-17-97
26+00	218.10	201.22	16.9									
27+00	218.40	201.31	17.1		4" sch 40 27+20.1		3500		4810 Willow Point		1-15-98	
28+00	215.00 214.08	201.41 201.45 OUT 201.48 IN	13.6 12.6	28+39.4	4" sch 40 28+29.4 saddle 4" sch 40 29+04.4 saddle		3306 3270		4814 Willow Point 4818 Willow Point		8-17-98 1-27-99	
29+00	214.60	201.54	13.1		4" sch 40 29+67.4 4" sch 40 30+24.4 Predco		3411 3410		4822 Willow Point 4826 Willow Point		5-21-98 5-21-98	
30+00	214.00	201.65	12.4									
31+00	214.60	201.76	12.8		4" sch 40 31+28.7 saddle		3311		4830 Willow Point		11-23-98	
32+00	215.20 211.90	201.87 201.93 OUT 201.98 IN	13.3 10.0	32+60.7								
33+00	210.80	202.05	8.8		4" sch 40 34+25.5		2491		4834 Willow Point		12-29-97	
34+00	207.60 207.20	202.24 202.31 OUT 202.40 IN	5.4 4.8	34+68.5			3236		4838 Willow Point		10-27-97	

Continue on N-33

Form #192-020 (July, 1981)

2726 8-18-94 4" sch 40 PVC 4231 N Country Ln - Tap at STA 6+70.1

2873 8-18-95

4811 E Willow Point at City of Bel Aire OK'd letting this house tie to same riser as 4819 Willow Point since no riser was provided for this lot. Bldg line for 4811 runs down ease and wyes into riser on lot for 4819 Willow Point