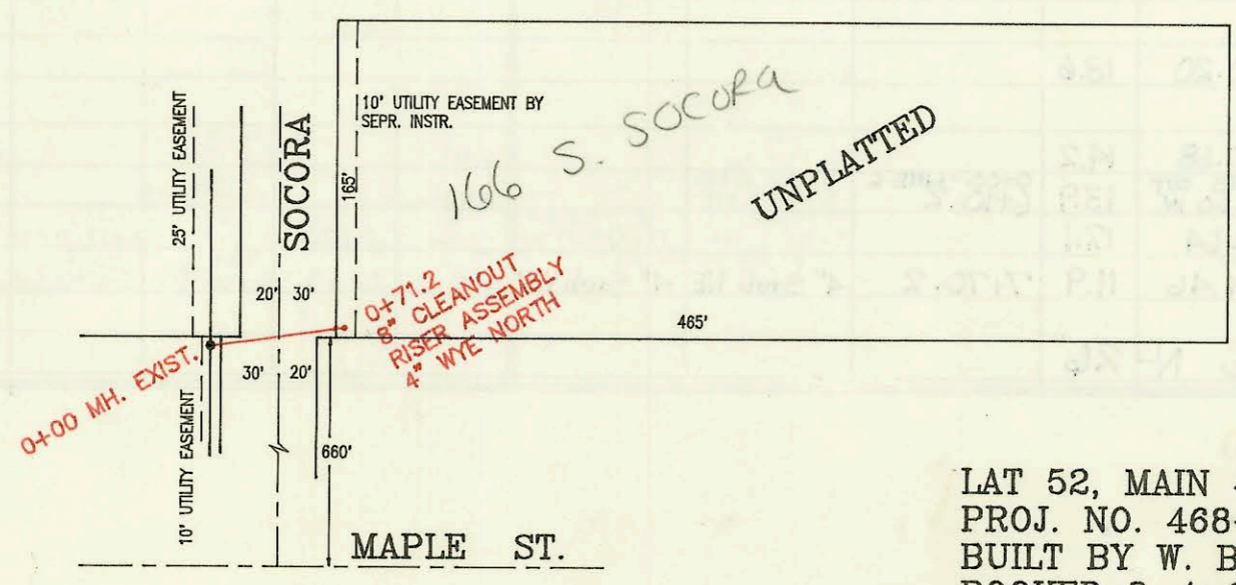
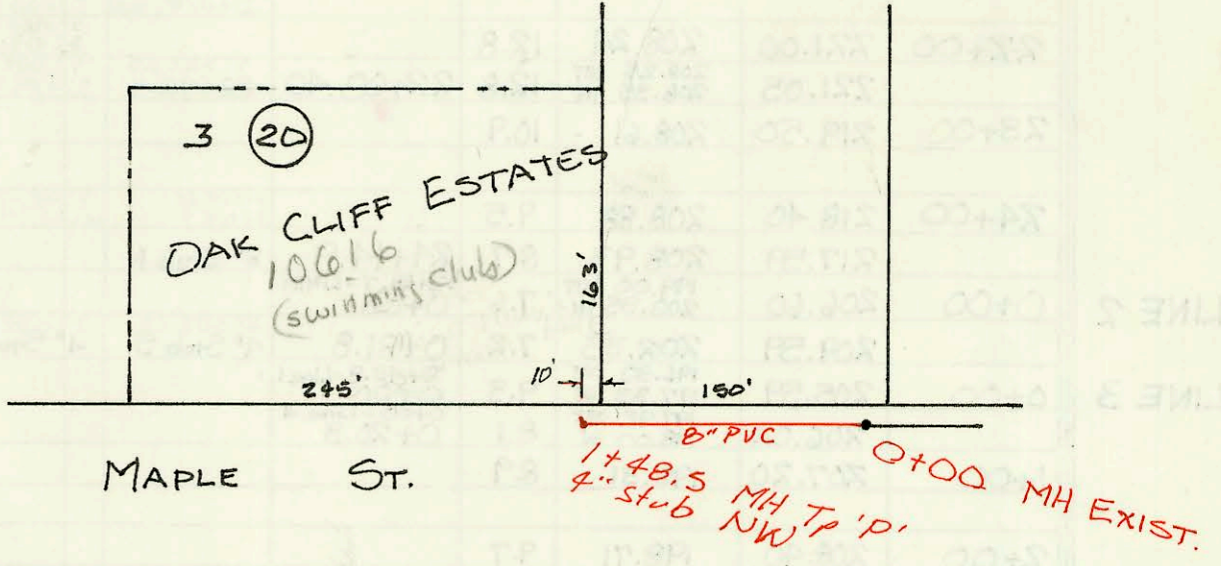
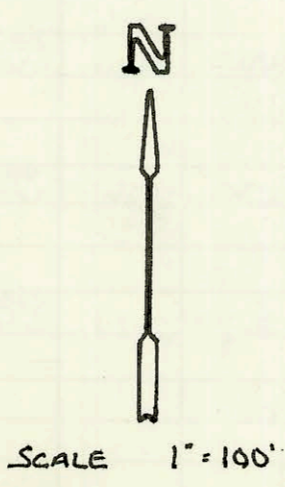


LAT 19, MAIN 12, SW INTERCEPTOR  
 PROJ. No. 468-81551 (740936)  
 Built By MEIS CONST.  
 Booked 8-3-92 from Plan & CARD.  
 WY

LAT 15, MAIN 9, SW INTERCEPTOR  
 PROJ. No. 468-82168 (740977)  
 Built By Nowak CONST.  
 Booked 8-24-92 from Plan



11510 w.  
 Lydia  
 com uncovered  
 015 09

LAT 52, MAIN 4, SW. INT4ERCEPTOR  
 PROJ. NO. 468-82195 (741108)  
 BUILT BY W. B. CARTER CONST.  
 BOOKED 8-4-92 FROM PLAN  
 WY

CONSTRUCTION RECORD						SERVICE RECORD						
STATION	ELEVATION		Depth	MANHOLE	4-INCH "Y" BRANCHES		No. of Permit		House Number		DATE OF PERMITS	
	Ground	Grade			North West	South East	North West	South East	North West	South East	North West	South East
LAT 19 LINE 1	MAIN 12, SW I											
0+00	154.00	146.80	7.2	EXIST 0+00								
1+05.5	159.8	147.22	12.6		4" SDR35 155.9 tap		93-4643-7		1357 N Pine Grove Ct		3-8-93	
2+00	160.2	147.60	12.6		1+30 4" R/S S +2.5'		93-905-7		1365 Pine Grove		1-20-95	
	161.07	147.89	13.2	2+70.5								
3+00	160.5	148.09	12.4		3+00 4" R/S S +2.5'							
LINE 2	161.25	148.64	12.6	3+81.8 EXIST 0+00	4" SDR35 4" Stub SW		93-14624-7		1353 N Pine Grove Ct		6-9-93	
0+00	154.00	142.27	11.7									
1+00	155.0	142.79	12.2		0+30 4" R/S N +2.0'	0+35 4" R/S S +2.0'	92-4585-9	93-1823-7	1335 N Pine Grove	1329 Pine Grove	12-2-92	1-26-93
	156.20	142.80	13.4	1+80.9	1+15 4" R/S N +2.5'	1+20 4" R/S S +2.5'	93-7110-7	93-7110-7	1337 Pine Grove	1325 Pine Grove	7-3-92	3-31-93
2+00	156.0	142.86	13.1		2+05 4" R/S N +3.0'	2+10 4" R/S S +3.0'	94-111-7	93-2525-8	1341 Pine Grove Ct	1321 P Pine Grove	8-27-92	1-4-94 9-24-93
3+00	157.0	143.15	13.9		4" SDR35 N +4.0'	4" SDR35 S +4.0'	92-2879-7	96-5077-7	1345 N Pine Grove	1317 Pine Grove	9-11-92	4-10-96
4+00	158.0	143.44	14.6									
	159.00	143.62	15.4	4+60.4	141.59 4" SDR35 4" Stub NE		96-1970-7		1349 Pine Grove		11-19-96	
LINE 3	0+00	152.92	141.63	11.3	0+00	0+12.0 tap	92-17486-7		1301 N Pine Grove		7-31-92	
1+00	153.5	141.97	11.5		4" SDR35 1+07.0 tap	4" SDR40 67.8	99-0116-7		1305 N Pine Grove	11810 Alderway	7-31-92	11-10-99
2+00	153.7	142.31	11.4									
3+00	152.8	142.65	10.2		4" SDR35 2+91.5		95-2076-7		1313 Pine Grove		12-19-95	
	153.35	142.71 out 142.81 in	10.7	3+17.1								
4+00	150.7	143.11	7.6				2000- 02133		11814 W Alderway		9-27-00	
	150.32	143.26	7.1	4+42.8		4" stub SE	98-1208-7		11818 Alderway		7-8-98	
LINE 4	0+00	152.92	141.69	11.2	0+00							
1+00	151.2	141.98	9.2									
	151.15	142.05	9.1	1+29.8	4" SDR35 4" stub SW		94-1497-7		11806 Alderway Ct		9-15-94	
LAT 52	MAIN 4, SW INTERCEPTOR											
0+00	142.3	134.56	7.7	0+00								
0+71.2	143.0	134.82	8.2	c.o. Riser	4" SDR40 into 4" wye		92-16036-7		1065 Socora		7-28-92	
LAT 15	MAIN 9, SW I											
0+00	138.95	132.71	6.2	0+00								
1+00	137.9	133.21	4.7									
	138.2	133.45	4.8	1+48.5	4" SDR35 4" stub NW		92-16449-7		10616 W Maple		7-29-92	
Private Line 3 (Cont'd)	Sanitary Sewer Main In Bel Aire, 37th to 45th (Continued From N-28)											
35+00	212.00	202.42	9.6									
36+00	215.00	202.49	12.5									
37+00	212.00	202.56	9.4									
38+00	215.80	202.67	13.2									
	216.76	202.68 OUT 202.68 IN	13.6	38+85.1		8" Stub S. 8" Stub E.						
39+00	216.40	202.71	13.7									
40+00	211.10	202.90	8.2									
41+00	211.20	203.10	8.1									
	212.72	203.22	9.5	41+61.5		4" Stub SE						

Form #192-020 (July, 1981)  
 92-17483-7 7/31/92 1337 N. Pine Grove Ct (4" SDR35 TAP 1+05.6)  
 94-111-7 1-4-94 1321 N Pine Grove Ct - Repl 14' at Main with 4" SDR35