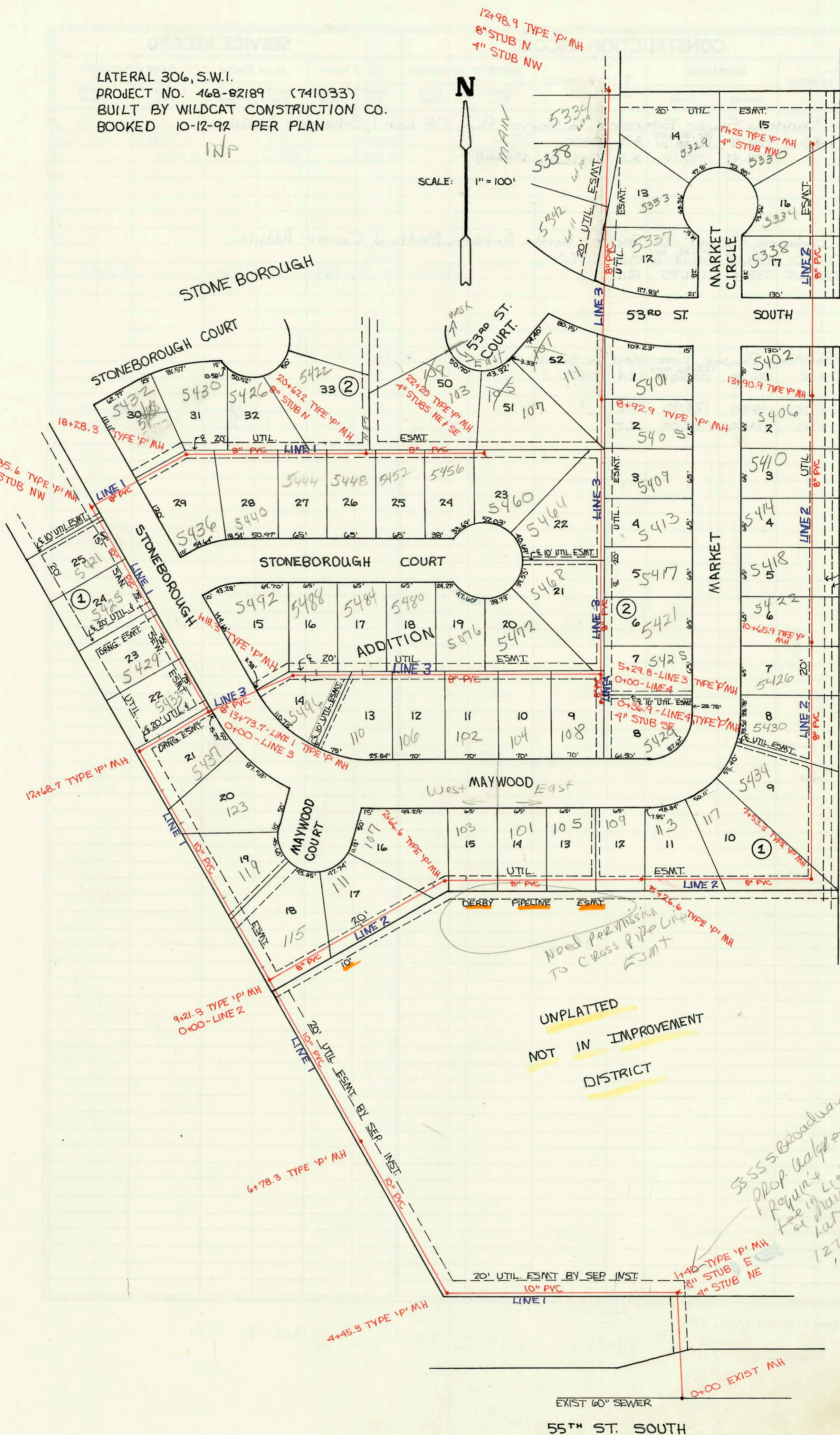
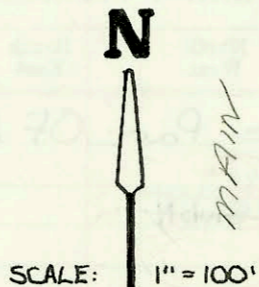


LATERAL 306, S.W.I.
PROJECT NO. 468-82189 (741033)
BUILT BY WILDCAT CONSTRUCTION CO.
BOOKED 10-12-92 PER PLAN

INP



UNPLATTED
NOT IN IMPROVEMENT
DISTRICT

5555 S. Broadway
Prop. Waiver
Require
fee in lieu
of maint
but - see case
127003
notes for
amount

EXIST 60" SEWER
55TH ST. SOUTH

CONSTRUCTION RECORD

SERVICE RECORD

STATION	ELEVATION		Depth	MANHOLE	4-INCH "Y" BRANCHES		No. of Permit		House Number		DATE OF PERMITS	
	Ground	Grade			North West	South East	North West	South East	North West	South East	North West	South East
0+00	83.37	63.62 OUT 67.79 IN	19.8	0+00								
1+00	80.50	67.97	12.5									
2+00	84.40	68.09 OUT 68.09 IN	17.0	1+40	4" Stub NE	8" Stub E						
3+00	83.80	68.38	15.4									
4+00	83.90	68.56	15.3									
5+00	82.40	68.64 OUT 68.69 IN	16.4	4+45.3								
6+00	81.60	68.97	12.6									
7+00	81.90	69.11	12.8	6+78.3								
8+00	83.10	69.15	12.8									
9+00	83.20	69.51	13.7									
10+00	83.60	69.55	14.1	0+00-Line 2 9+21.3		9+40-4" Ris. E. 76.60	93-21375-7		115 W Maywood Ct			8-9-93
11+00	83.20	69.69	13.5			4" PVC 40 10+45-4" Ris. E. 75.75	92-45(22)-7		119 W Maywood			12-22-92
12+00	83.20	69.87	13.3			11+55-4" Ris. E. 75.87 12+10-4" Ris. E. 75.80	93-21376-7		123 W Maywood Ct			8-9-93
13+00	83.60	70.28	13.3	12+68.7								
14+00	83.80	70.41 OUT 70.46 IN	13.4	0+00-Line 3 13+73.7		13+00-4" Ris. N. 75.30 4" PVC 40 13+54.7 TAP	93-66207		5437 S. Stoneborough			3-25-93
15+00	83.50	70.51	13.0			4" PVC 40 13+96.7 TAP 4" PVC 40 14+29.7 TAP	93-1021-7 93-772-7		5433 S. Stoneborough 5429 S. Stoneborough			3-25-93 1-19-93
16+00	83.10	70.69	12.4			4" Sch 40 PVC 15+50.6 TAP 4" PVC 47 South of NPL	93-1598-7 93-1583-7		5425 Stoneborough 5421 Stoneborough			6-14-93 6-14-93
17+00	83.70	71.02 OUT 71.22 IN	12.7	16+85.6	10" Stub NW							
18+00	83.60	71.31	12.0			4" PVC 40 18+06.6 4" PVC 40 18+50.8 4" PVC 40 19+42.2	93-28497 94-66177		5432 Stoneborough 5430 Stoneborough			10-26-93 4-29-94
19+00	84.20	72.08	12.1	18+28.3		4" PVC 40 18+43.3 4" PVC 40 19+20.3 4" PVC 40 19+72.2 4" PVC 40 20+38.2	92-45607 93-15834-7 93-23696-7 93-23697-7		5436 Stoneborough 5426 Stoneborough 5440 Stoneborough 5444 Stoneborough 5448 Stoneborough			6-14-93 7-3-93 9-3-93
20+00	84.40	73.11	11.3									
21+00	85.00	73.51	11.5	20+67.2	8" Stub N							
22+00	84.60	73.71	10.9			4" PVC 40 21+00.8 4" Sch 40 PVC 21+87.0 TAP	94-3238-7 93-30669-7		103 E 53rd Ct 5452 Stoneborough 5456 S. Stoneborough			3-8-94 12-9-93 8-9-93
23+00	84.90	74.31	10.6									
24+00	85.40	74.73	10.7	22+70	4" Stub NE	4" Stub SE	93-30668-7		154 E 53rd Ct 5460 Stoneborough			11-9-93 12-22-92
25+00	83.60	69.55 OUT 69.75 IN	14.1	0+00-Line 1 9+21.3								
26+00	83.70	70.13	13.6									
27+00	84.00	70.53	13.5			14+40-4" Ris. N. 77.20 2+50-4" Ris. N. 77.20 2+45-4" Ris. N. 77.20	93-15916-7 93-96207 94-3237-7		111 W. Maywood 107 W. Maywood 103 W. Maywood 101 E. Maywood			6-14-93 4-21-93 3-8-94
28+00	84.30	70.82	13.5	2+66.6		4" PVC 40 32+54.6 TAP	93-6623-7					3-25-93
29+00	84.20	70.93	13.3									
30+00	83.70	71.33	12.4			4" PVC 40 4+23.6 TAP	92-45607-7		105 E Maywood			12-22-92
31+00	84.20	71.73	12.5			4" PVC 5+13.6	93-23695-7		109 E Maywood			9-3-93
32+00	84.50	71.86	12.6	5+76.6								
33+00	84.40	72.13	12.3			4" Sch 40 PVC 5+91.6 TAP 4" Sch 40 PVC 6+52.3 TAP	93-9125-7 93-21377-7		113 E. Maywood 117 E. Maywood			4-21-93 8-9-93
34+00	84.00	72.53	11.5									
35+00	84.10	72.76 OUT 72.96 IN	11.3	7+53.3								
36+00	83.70	73.13	10.6			4" PVC 40 8+84.3 TAP	93-9626-7		5434 S. Market			4-21-93
37+00	84.00	73.53	10.5			4" Sch 40 PVC 9+50.3 TAP	93-21379-7		5430 S. Market			8-9-93
38+00	84.10	73.93	10.2			4" Sch 40 PVC 10+14.3 TAP 4" PVC 40 11+06.9 TAP	93-21378-7 92-35102-7		5426 S. Market 5422 S. Market			8-9-93 10-2-92
39+00	84.60	74.21	10.4	10+65.9								
40+00	84.30	74.33	10.0			4" PVC 40 40' North of SPL 2342 South of Curb (50' S) 45.50	92-45622-7 93-15914-7		5418 S. Market 5414 Market			12-22-92 6-14-93

Later
LINE 1

LINE 2

Continued On Page N-35