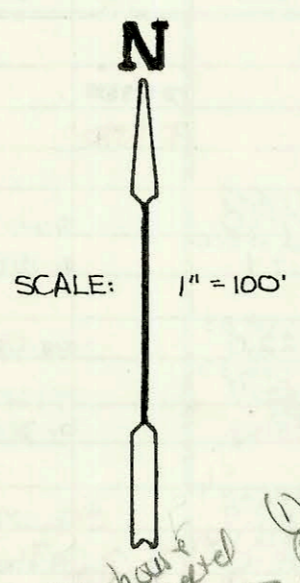
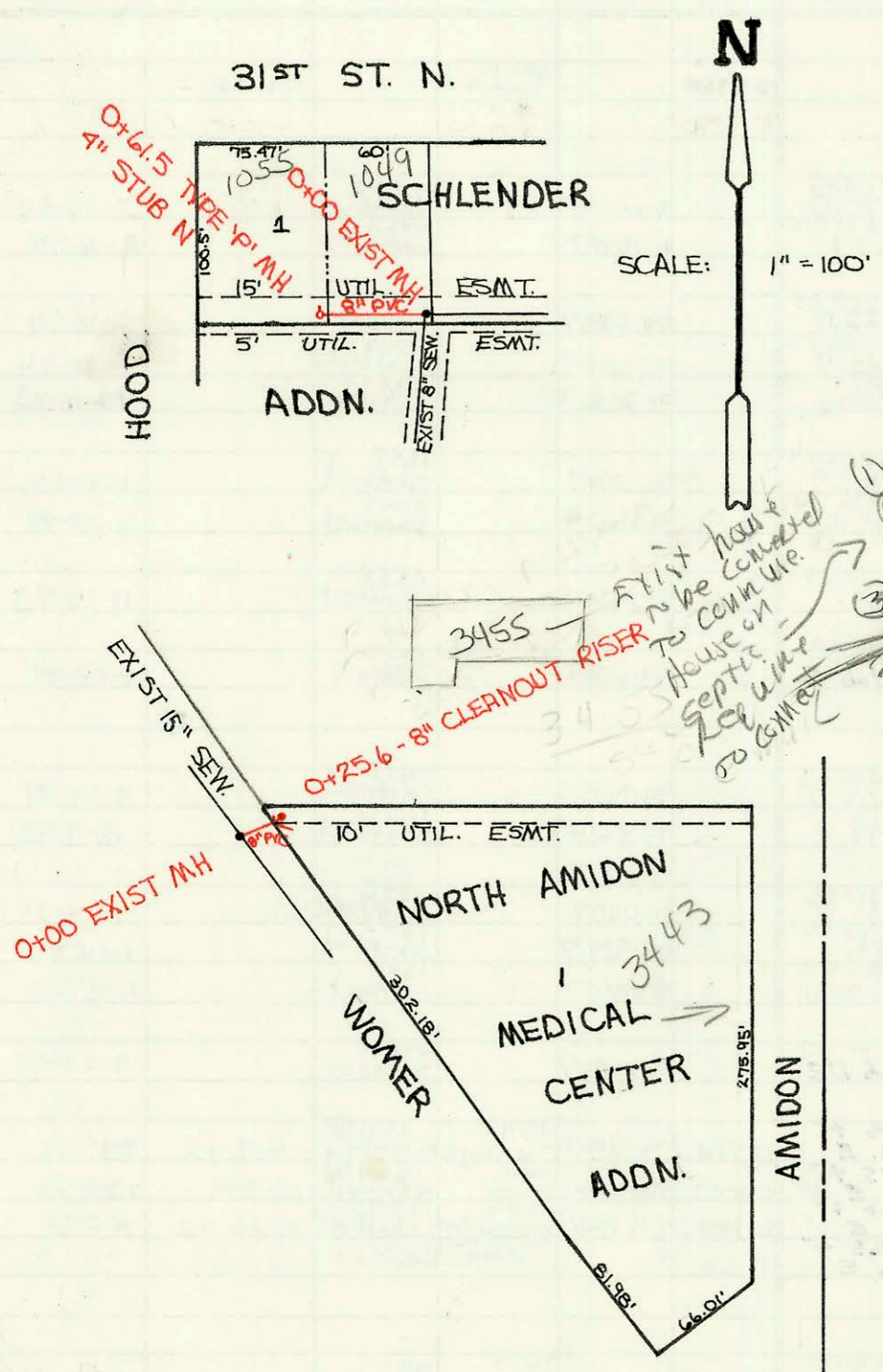
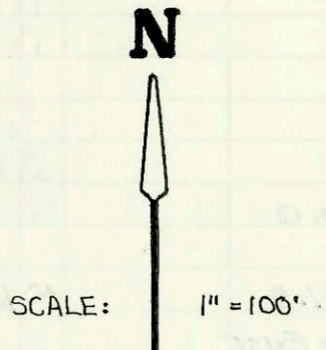


PRIVATE SANITARY SEWER EXTENSION TO SERVE  
 PART OF LOT 1, SCHLENDER ADDITION  
 PRIVATE PROJECT NO. 359 PPS (607861)  
 BUILT BY McCULLOUGH EXCAVATION, INC.  
 BOOKED 10-20-92 FROM AS BUILTS

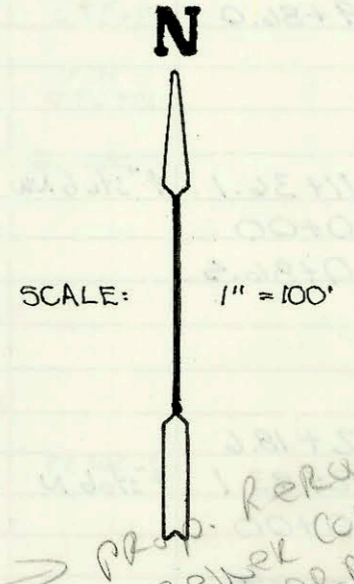
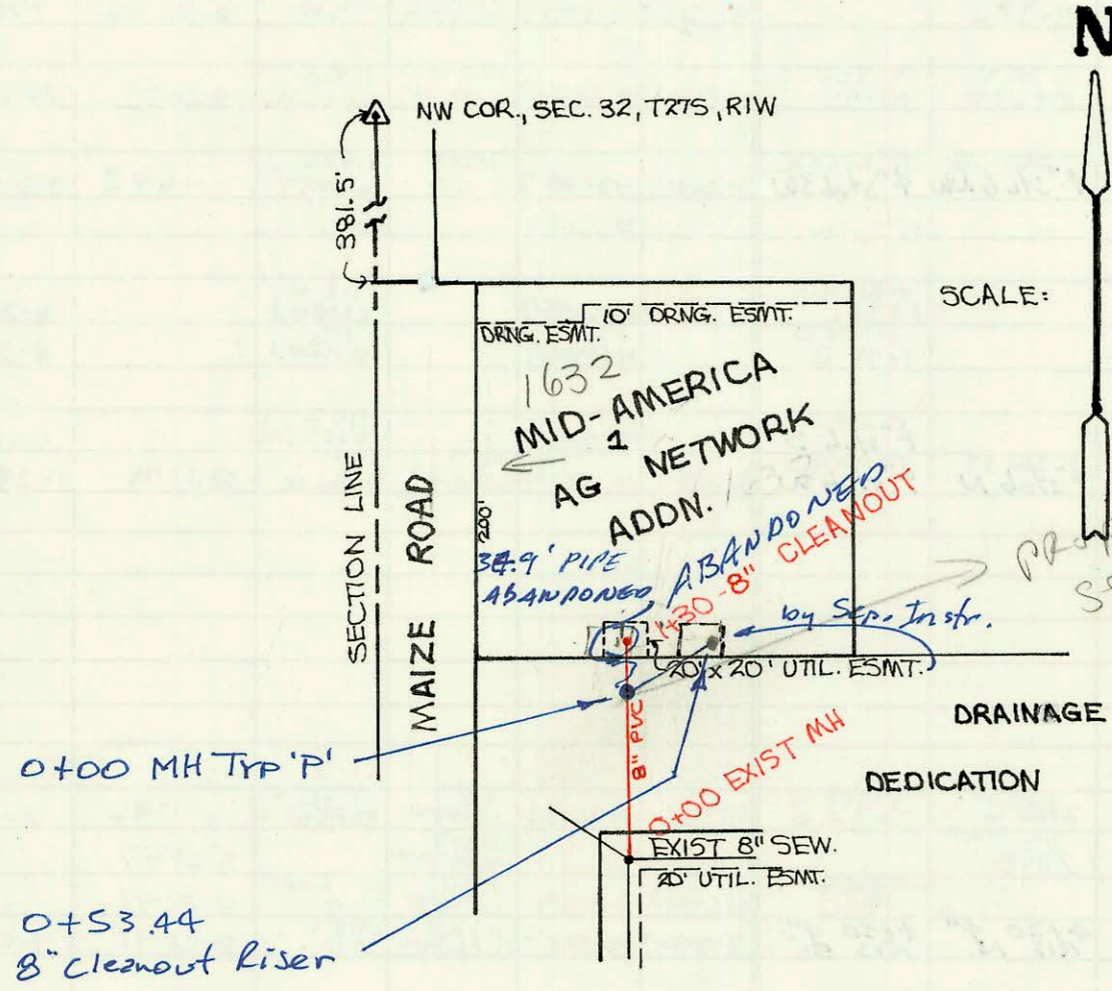


*Handwritten notes:*  
 1) P/ly Insp sewer fee mk  
 2) Fee in lieu of lat = \$5,390  
 35' x 154' (AW) = \$2,592.50  
 59 FT x 4.05 = \$2,389.95  
 51,850.9  
 Total due \$7,982.50



PRIVATE SANITARY SEWER TO SERVE  
 NORTH AMIDON MEDICAL CENTER ADDITION  
 PRIVATE PROJECT NO. 357 PPS (607861)  
 BUILT BY McCULLOUGH EXCAVATION  
 BOOKED 10-23-92 FROM AS BUILTS

SE CORNER, NW 1/4, SEC. 31, T26S, R1E



*Handwritten notes:*  
 PRov. Reroute of City Main by Priv. Project  
 Sewer cont. Insp from Oct 1991  
 Permit to Relocate Service Line  
 for 1632 ft needs to be  
 before sewer permit issued BK  
 12/13/02

PRIVATE SANITARY SEWER EXTENSION  
 TO SERVE MID-AMERICA AG NETWORK ADDN.  
 PRIVATE PROJECT NO. 343 PPS (607861)  
 BUILT BY W. B. CARTER CONSTRUCTION CO.  
 BOOKED 10-26-92 FROM AS BUILTS

S.S. to serve MID AMERICA AG NETWORK ADDN.  
 Proj. No. 1161 PPS  
 Built by MIES CONSTRUCTION  
 Booked 4/28/02 from As Built

CONSTRUCTION RECORD						SERVICE RECORD						
STATION	ELEVATION		Depth	MANHOLE	4-INCH "Y" BRANCHES		No. of Permit		House Number		DATE OF PERMITS	
	Ground	Grade			North West	South East	North West	South East	North West	South East	North West	South East
Private Sanitary Sewer Extension To Serve Part Of Lot 1, Schlender Addition												
0+00	129.17	120.32 OUT 120.88 IN	8.9	0+00			92-4560-7		1044 W 31st N		12-22-92	
	129.47	121.18	8.3	0+61.5	4" Stub N		92-28627		1955 W 31st N		9-14-92	
Private Sanitary Sewer To Serve North Amidon Medical Center Addition												
0+00	138.47	119.14 OUT 121.14 IN	19.3	0+00								
0+25.6	133.40	121.35	12.1				92-24042-7		3443 Amidon		8-26-92	
Private Sanitary Sewer Extension To Serve Mid-America AC Network Add.												
0+00	136.30	123.86 OUT 124.50 IN	12.4	0+00								
1+00	138.50	124.90	13.6									
1+30	138.20	125.00	13.2				92-2136		1632 S. Maize		5-7-92	

Sub 2002-02136 8/7/02 1632 S Maize Clearwater Etc: