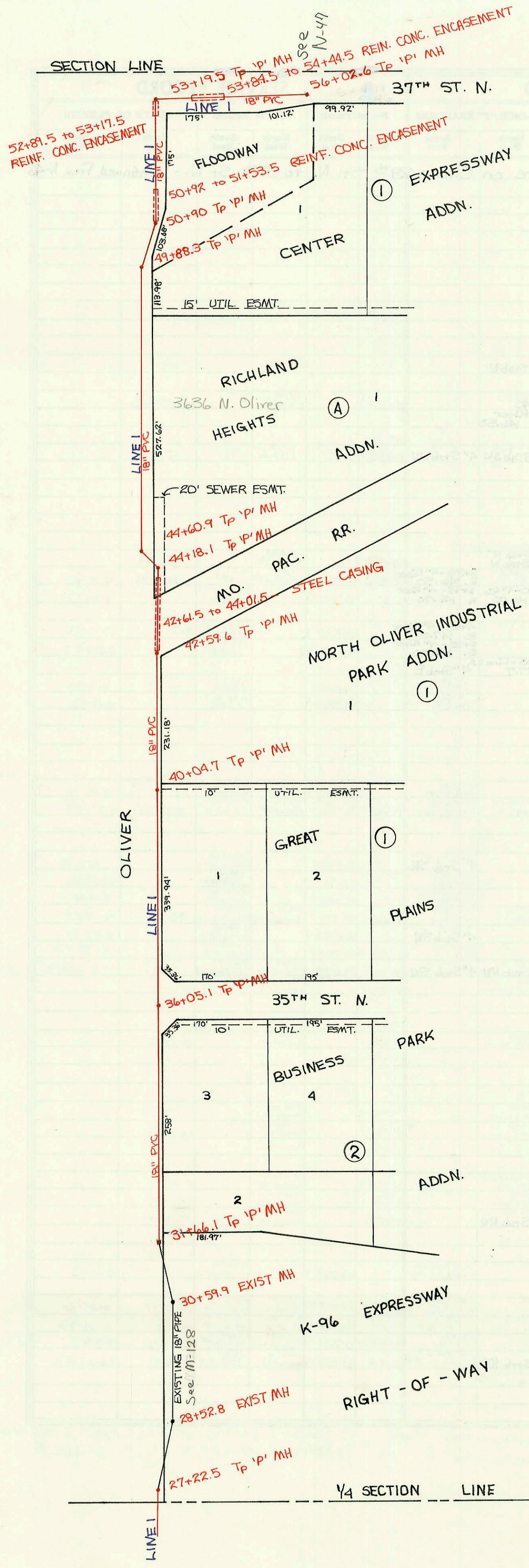


*Do Not Issue Connections  
To This Main Without City  
Approval thru Bel Aire  
ENG.*

PRIVATE SANITARY SEWER MAIN  
IN BEL AIRE ON OLIVER - 29<sup>TH</sup> ST. N.  
TO 37<sup>TH</sup> ST. N. (CONT'D.)  
PRIVATE PROJECT NO. 227PPS (607861)  
BUILT BY W. B. CARTER CONST. CO.  
BOOKED 10-29-92 FROM AS BUILTS

Refer Requests for Connection  
to City ENG's office for  
Requirements  
(BR 173-93)



CONSTRUCTION RECORD

SERVICE RECORD

LINE 1  
(Cont'd.)

45

STATION	ELEVATION		Depth	MANHOLE	4-INCH "Y" BRANCHES		No. of Permit		House Number		DATE OF PERMITS	
	Ground	Grade			North West	South East	North West	South East	North West	South East	North West	South East
Private Sanitary Sewer Main In Bel Aire on Oliver - 29 <sup>th</sup> St. No to 37 <sup>th</sup> St. No. - Continued From N-												
28+00				28+52.8								
29+00												
30+00				30+59.9								
31+00	178.19	161.11 OUT 161.17 IN	17.1	31+66.1								
32+00	179.00	161.25	17.8									
33+00	179.00	161.47	17.5									
34+00	178.20	161.70	16.5									
35+00	177.70	161.92	15.8									
36+00	177.00	162.15	14.9									
	176.50	162.16 OUT 162.16 IN	14.3	36+05.1								
37+00	175.30	162.37	12.9									
38+00	175.90	162.60	13.3									
39+00	175.60	162.82	12.8									
40+00	175.20	163.05	12.1									
	175.20	163.06 OUT 163.06 IN	12.1	40+04.7								
41+00	174.80	163.26	11.5									
42+00	175.40	163.47	11.9									
	176.65	163.60	13.1	42+59.6								
43+00	178.00	163.79	14.2									
44+00	176.70	164.25	12.5									
	176.73	164.33 OUT 164.63 IN	12.4	44+18.1								
	178.60	164.82 OUT 166.17 IN	13.8	44+60.9	4" SPREADS TO 6" LINE AT MANH MT Conn		95-169187 EXIST 6" SERV LINE CANN W/ST MANH PEOPLE		3626 A (Goodwill Industries) N. Oliver		7-1895 PER Plans 247 W. B. Cantel	REFER TO M-128
45+00	178.80	166.30	12.5									
46+00	179.00	166.63	12.4									
47+00	179.00	166.96	12.0									
48+00	179.90	167.29	12.6									
49+00	179.40	167.62	11.8									
	182.25	167.91	14.3	49+88.3								
50+00	179.60	167.95	11.7									
	180.01	168.30 OUT 170.13 IN	11.7	50+90								
51+00	180.40	170.15	10.3									
52+00	180.20	170.36	9.8									
53+00	185.10	170.57	14.5									
	185.18	170.61 OUT 171.51 IN	14.5	53+19.5								
54+00	176.20	171.69	4.5									
55+00	181.50	171.91	9.6									
56+00	181.80	172.13	9.7									
	181.85	172.14 OUT 173.10 IN	9.7	56+02.6								
Continued on Page N-47												