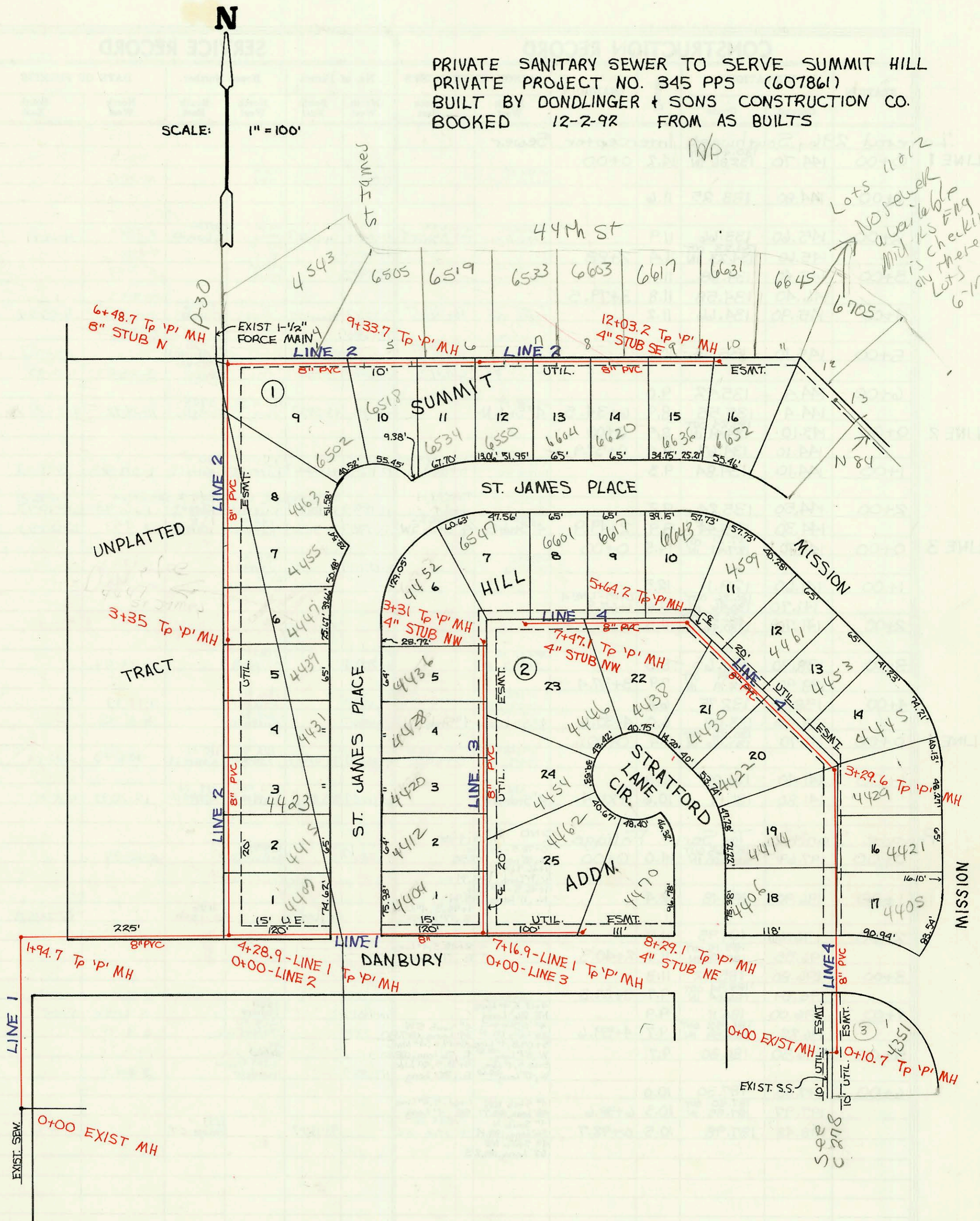


PRIVATE SANITARY SEWER TO SERVE SUMMIT HILL PRIVATE PROJECT NO. 345 PPS (607861) BUILT BY DONDLINGER + SONS CONSTRUCTION CO. BOOKED 12-2-92 FROM AS BUILTS

SCALE: 1" = 100'



3521 S-13-99 6645 E 44th St N-NC-

CONSTRUCTION RECORD						SERVICE RECORD						
STATION	ELEVATION		Depth	MANHOLE	4-INCH "Y" BRANCHES		No. of Permit		House Number		DATE OF PERMITS	
	Ground	Grade			North West	South East	North West	South East	North West	South East	North West	South East
Private Sanitary Sewer to Serve Summit Hill Addition												
LINE 1	0+00	196.44	186.44 OUT 186.54 IN	10.0	0+00							
	1+00	195.80	187.46	8.3								
		197.49	188.34 OUT 188.54 IN	9.2	1+94.7							
	2+00	198.00	188.59	9.4								
	3+00	199.40	189.52	9.9								
	4+00	201.30	190.45	10.9								
		201.37	190.72 OUT 190.97 IN	10.7	0+00-Line 2 4+28.9							
	5+00	203.50	192.37	11.1								
	6+00	206.30	194.34	12.0								
	7+00	208.70	196.32	12.4								
		208.70	196.65 OUT 196.90 IN	12.1	0+00-Line 3 7+6.9							
	8+00	210.30	198.54	11.8								
		210.72	199.12	11.1	8+29.1	4" PVC 40 7+36.9 tap	2512		4462 St. James		7-15-93	
LINE 2	0+00	201.37	190.72 OUT 191.07 IN	10.7	0+00	4" SDR 35 4" Stub NE	2681		4470 St. James		6-16-94	
	1+00	202.50	191.84	10.7		4" SDR 35 0+42.6 4" Sch 40 PVC 1+07.7 tap		2641	4407 N St. James		3-28-94	
	2+00	203.70	192.62	11.1		4" SDR 35 2+40.4 tap		2642	4415 N St. James		11-18-92	
	3+00	204.70	193.39	11.3		4" SDR 35 3+92 tap		2460	4425 St. James		12-17-92	
	4+00	205.90	194.28	11.6	3+35	4" PVC 40 4+42.7 tap		2456	4421 St. James		11-24-92	
	5+00	206.70	195.09	11.6								
	6+00	207.40	195.90	11.5		4" Sch 40 PVC 4+87.7 tap		2455	4434 N St. James Pl.		11-23-92	
	7+00	207.19	196.29 OUT 196.49 IN	10.9	6+48.7	8" Stub N						
	8+00	212.00	197.02	15.0		4" SCH 40 8+11.7 Saddle 4" SCH 40 8+96.7 Saddle	3518	2545	6505 St. James	6518 St. James	5-10-99	
						8+80-4" Riser S. 202.60	3320	2546	6519 St. James	6534 St. James	12-9-98	10-5-93
	9+00	214.70	197.37	17.3		4" SCH 40 10+46.7			6533 St. James	6550 St. James	6-2-98	10-5-93
		214.94	197.49 OUT 197.64 IN	17.5	9+33.7	4" SCH 40 10+20-4" Riser S. 202.60	3421	2547	6604 St. James	6604 St. James	7-15-93	
	10+00	214.20	197.87	16.3		4" SCH 40 10+76.2 Saddle	2513		6603 St. James	6620 St. James	6-2-98	6-2-93
						10+80-4" Riser S. 201.60	3422	2494	6603 St. James	6620 St. James	6-2-98	6-2-93
	11+00	211.50	198.21	13.3		4" SCH 40 11+71.6 Saddle			6617 St. James	6636 St. James	9-30-98	6-2-93
	12+00	208.00	198.56	9.4		4" SCH 40 11+97.2 Saddle			6631 St. James	6652 St. James	10-15-98	10-22-93
LINE 3	0+00	208.70	196.65 OUT 196.90 IN	12.1	0+00	4" SDR 35 0+32.0	2640		4404 St. James		1-28-94	
	1+00	210.30	197.89	12.4		4" SDR 35 1+00.0	2639		4412 N St. James		3-28-94	
	2+00	211.50	198.88	12.6		4" Sch 40 1+74.0		2584	4434 N St. James		11-29-93	
	3+00	213.20	199.86	13.3		4" PVC 40 2+24.0 tap	2492		4428 St. James		5-24-93	
		213.27	200.17	13.1	3+31	4" PVC 40 2+41.0 tap	2507	2642	4436 N St. James	4446 N St. James	7-8-93	3-28-94
		213.27	200.17	13.1	3+31	4" Sch 40 4" Stub NW	2573		4452 St. James		10-22-93	
LINE 4	0+00	207.45	195.29 OUT 195.40 IN	12.2	0+00	4" Sch 40 0+22.3	2574		4351 Mission		10-22-93	
	1+00	207.60	195.89	11.7		4" SDR 35 1+46.7 tap	2638	2659	4406 St. James	4405 Mission	3-28-94	4-21-94
	2+00	208.10	196.30	11.8		4" Sch 40 2+38.0	2613		4421 N Mission		2-2-94	
	3+00	207.90	196.70	11.2		4" PVC 40 2+62.0 tap	2490	2594	4414 St. James	4429 Mission	5-24-93	12-21-93
	4+00	207.82	196.82 OUT 196.97 IN	11.0	3+29.6	4" Sch 40 3+55.6	2501		4445 Mission		10-26-93	
		208.30	197.24	11.1		4" PVC 40 3+72.6 tap	2489	2582	4422 N St. James	4453 Mission	5-24-93	11-17-93
	5+00	208.80	197.62	11.2		4" PVC 40 4+90.2 tap	2575	2633	4430 St. James	4461 N Mission	10-22-93	3-15-94
		208.80	197.62	11.2		4" SDR 35 5+20.2	2731		4509 Mission		9-30-94	
		209.11	197.86 OUT 199.76 IN	11.3	5+64.2	4" SDR 35 5+61.7	2526	2592	6643 St. James	4438 St. James	8-16-93	12-14-93
	6+00	210.10	200.09	10.0		4" PVC 40 6+57.2 tap	2520		6619 St. James		7-22-93	
	7+00	212.80	201.00	11.8		4" PVC 40 7+10.1 tap	2514	2642	6501 St. James	4446 St. James	7-15-93	3-28-94
		213.18	201.43	11.8	7+47.1	4" SDR 35 7+32.1 tap	2472		6507 E. St. James		3-12-93	

Form #192-020 (July, 1981)

- # 2545 10-5-93 6518 E St James - 4" ABS 40 TAP 8+58.7
- # 2547 10-5-93 6550 E St James - 4" ABS 40 TAP 9+99.7
- # 2546 10-5-93 6534 E St James - 4" ABS 40 TAP 9+02.7
- # 2638 3-28-94 4406 N Stratford OK - Insp saw only from main tap to 1st 45' all a turn 60' upstream of tap

- # 2640 3-28-94 4404 N St James - Insp # Peterman advised he saw only tap to first fitting up stream to tap.
- # 2639 3-28-94 4412 N St James - Insp saw only tap to 1st fitting up stream of tap.
- # 2642 3-28-94 4446 N Stratford OK - Insp saw only tap and 1st 45' well up stream of tap