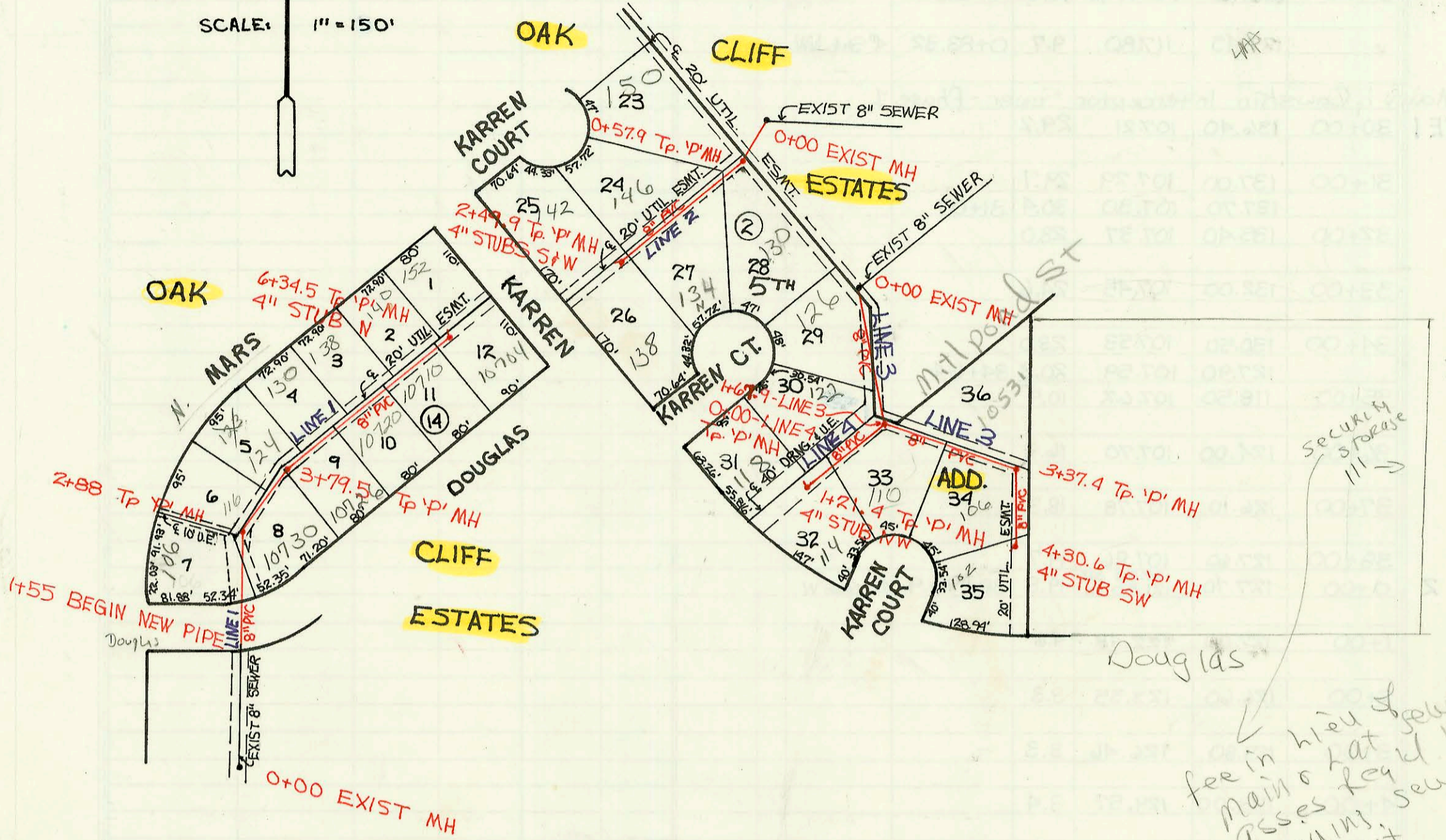
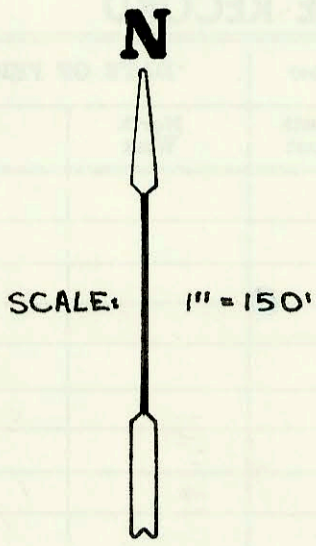
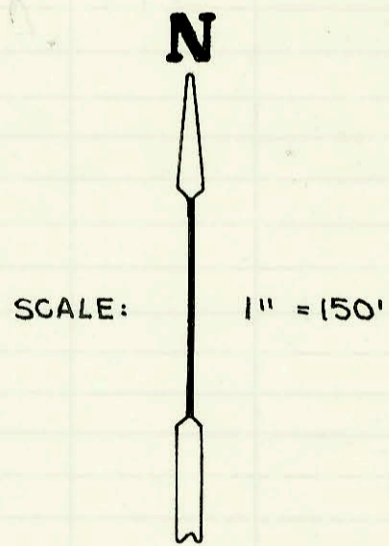
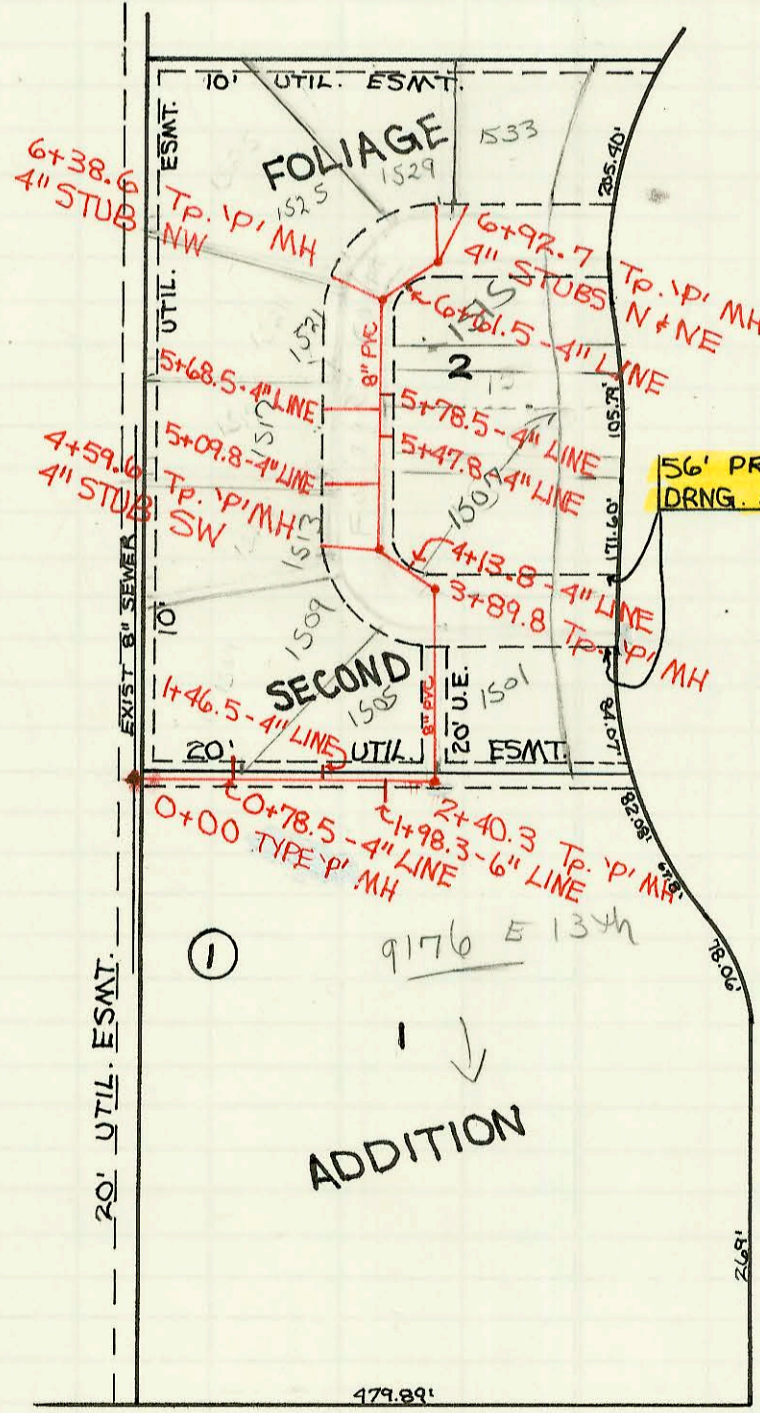


LATERAL 296, SWI
PROJ. NO. 468-82110 (741090)
BUILT BY NOWAK CONSTRUCTION CO.
BOOKED 1-19-93 AS PER PLAN



Security storage
fee in lieu of sewer
main & lat. before
issuing sewer
PERMIT
5/20/99

PRIVATE SANITARY SEWER TO SERVE
FOLIAGE SECOND ADDITION
PRIVATE PROJECT NO. 328 PPS (607861)
BUILT BY WILDCAT CONSTRUCTION CO.
BOOKED 1-21-98 FROM AS BUILTS



13TH ST. N.

CONSTRUCTION RECORD							SERVICE RECORD					
STATION	ELEVATION		Depth	MANHOLE	4-INCH "Y" BRANCHES		No. of Permit		House Number		DATE OF PERMITS	
	Ground	Grade			North West	South East	North West	South East	North West	South East	North West	South East
Lateral 296, Southwest Interceptor Sewer												
LINE 1	0+00	144.70	130.47 OUT 132.86 IN	14.2	0+00	4" SDR 35 6+27.0 TAP		92-34257		106 N Mars		10-29-92
	1+00	144.80	133.25	11.6								
	2+00	145.60	133.66	11.9		4" SDR 35 3+00.6 TAP	4" SDR 35 TAP 85' W of 2" man	93-24557	91-61327	116 N Mars	10730 W Douglas	2-21-93 4-29-94
		145.60	134.23 OUT 134.23 IN	11.4	2+88			93-10833-7		122 N Mars		4-30-93
	3+00	145.40	134.28	11.1		4" SDR 35 3+61.5 TAP		93-11039-7		124 N Mars		5-7-93
		146.40	134.58	11.8	3+79.5							10-8-93
	4+00	145.90	134.66	11.2		4" SDR 35 4+23.5 TAP	4" SDR 35 4+30.5	93-55007	94-65197	130 N Mars	10726 Douglas	3-18-93 4-29-94
						4" SDR 35 5+20.5 TAP		93-163057		128 N Mars		6-18-93
	5+00	145.10	135.03	10.1			4" SDR 35 5+05.5		93-293607		10720 W Douglas	11-12-93
						4" SDR 35 5+52.9	4" SDR 35 5+67.5	93-160457	93-293607	140 N Mars	10710 W Douglas	3-25-93 11-12-93
	6+00	144.4	135.42	9.0								
		144.4	135.55	8.9	6+34.5	4" Stub N		92-93247-7	98-52877	152 N Mars	10704 Douglas	11-24-92 4-8-98
LINE 2	0+00	143.10	134.24 OUT 134.44 IN	8.9	0+00							
	1+00	144.10	134.67	9.4	0+57.9							
		144.10	134.84	9.3		4" SDR 35 0+16.0 TAP	4" SDR 35 0+0.6 TAP	93-16247	93-122067	150 N Karran Ct	130 N Karran	1-27-93 5-18-93
	2+00	144.50	135.24	9.3		4" SDR 35 2+09.9	4" SDR 35 1+169.4 TAP	93-18887	93-108187	146 N Karran Ct	134 R Karran	1-26-93 4-16-91 4-30-93
LINE 3	0+00	141.70	127.21 OUT 127.31 IN	14.5	0+00	4" Stub W	4" Stub S	93-29857	93-311567	142 N Karran Ct	138 Karran	2-4-93 12-20-93
	1+00	141.60	129.11	12.5		4" SDR 35 0+13.0 TAP		93-122097		126 N Karran Ct		5-18-93
		141.70	130.26 OUT 130.46 IN	11.4	0+00-LINE 4 1+67.9					122 N Karran Ct		10-6-93
	2+00	142.00	130.75	11.3								
	3+00	139.90	131.65	8.3		4" SDR 35 2+81.4 NIC		94-201817		10531 Milpond		12-16-94
		139.90	131.99 OUT 132.19 IN	7.9	3+37.4							
	4+00	138.90	132.75	6.2		4" SDR 35 4+09.4 TAP		93-241687		106 N Karran Ct		9-12-93
LINE 4	0+00	141.70	130.26 OUT 130.46 IN	11.4	0+00	4" Stub SW		93-45607		102 N Karran Ct		3-31-95
	1+00	141.40	131.06	10.3		4" SDR 35 0+73.4	4" SDR 35 0+54.8	93-26387	94-41167	122 N Karran Ct	110 N Karran Ct	10-6-93 3-22-94
		141.80	131.19	10.6	1+21.4	4" Stub NW		93-312487	98-52887	118 N Karran Ct	114 N Karran Ct	12-20-93 4-8-98
Private Sanitary To Serve Foliage 2nd Addition												
	0+00	197.69	183.65 OUT 184.00 IN	14.0	0+00	0+78.5-4" Line N., 18' Long, 185.50		94-23127		1509 N Foliage Ct		2-14-94
	1+00	196.90	184.48	12.4		1+46.5-2" Line N., 11' Long, 185.94	1+98.3, 6" Line S., 17' Long		93-165747		9176 13th	6-23-93
	2+00	196.60	184.95	11.7								
		196.55	185.15 OUT 185.25 IN	11.4	2+40.3		2+48.3, 4" Line E., 17' Long					
	3+00	196.80	185.52	11.3								
		195.59	185.94 OUT 186.04 IN	9.7	3+89.8							
	4+00	196.00	186.11	9.9		4" SDR 35 4+13.8, 4" Line NE, 26' Long		94-96587		1507 Foliage	1501 Foliage	5-21-96 5-21-96
		196.22	186.52 OUT 186.59 IN	9.7	4+59.6	4" Stub SW 34' Long, 187.80		94-23127		1513 N Foliage Ct		2-14-94
	5+00	196.50	186.80	9.7		5+09.8, 4" Line W., 37' Long, 188.30	5+47.8, 4" Line E., 26' Long, 188.20			See Below		
						5+68.5, 4" Line W., 42' Long, 188.60	5+78.5, 4" Line E., 20' Long	95-15737		1581 Foliage		2-3-95
	6+00	197.30	187.30	10.0								
		197.97	187.50 OUT 187.55 IN	10.5	6+38.6	4" Stub NW 48' Long, 188.77	6+61.5, 4" Line SE, 4' Long					
		198.48	187.98	10.5	6+92.7	4" Stub N 56' Long, 189.14	4" SDR 35 4" Stub N/C	93-130-7		1533 N Foliage C.T.		1-5-93
						4" Stub NE 62' Long, 189.23						
2001-00899-4/11/01-134 N KARRAN CT-4" SCH40-Under pool- 4H22 Padgett Exc												

* 94-17427 - 1517 N Foliage CT - 10/24/94 - DL Tied onto leader 605' N of MH. 4" SDR 35
95-15737 1501 Foliage Ct - 4" Leader in SE CORNER of LOT

1501 N Foliage Ct - No record of
sewer permit - water Dept advised
they are billing for sewer (2/27/95)
BR