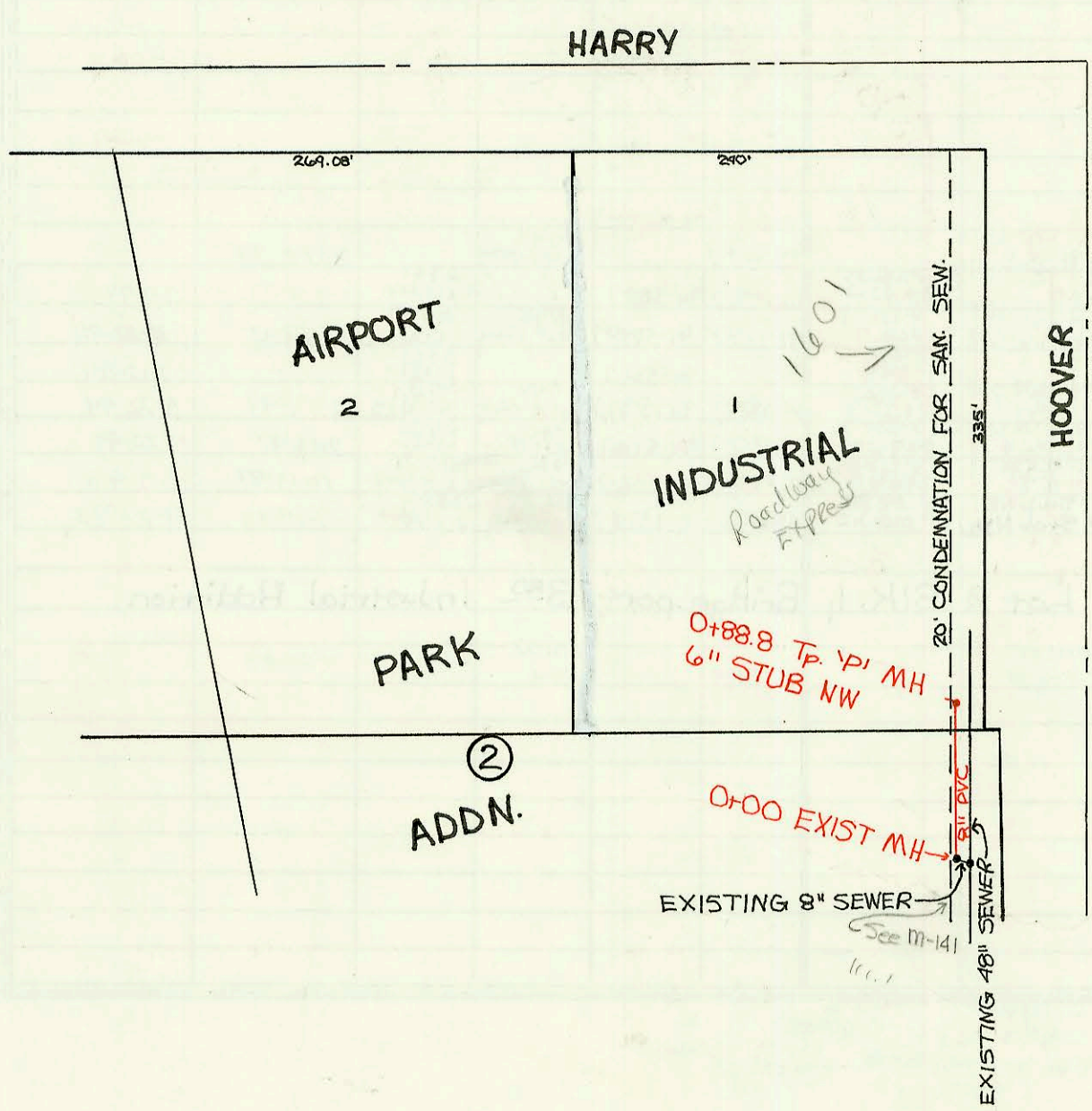
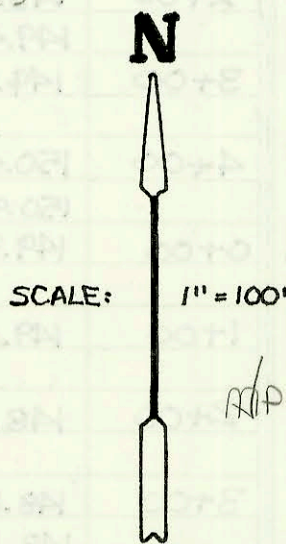
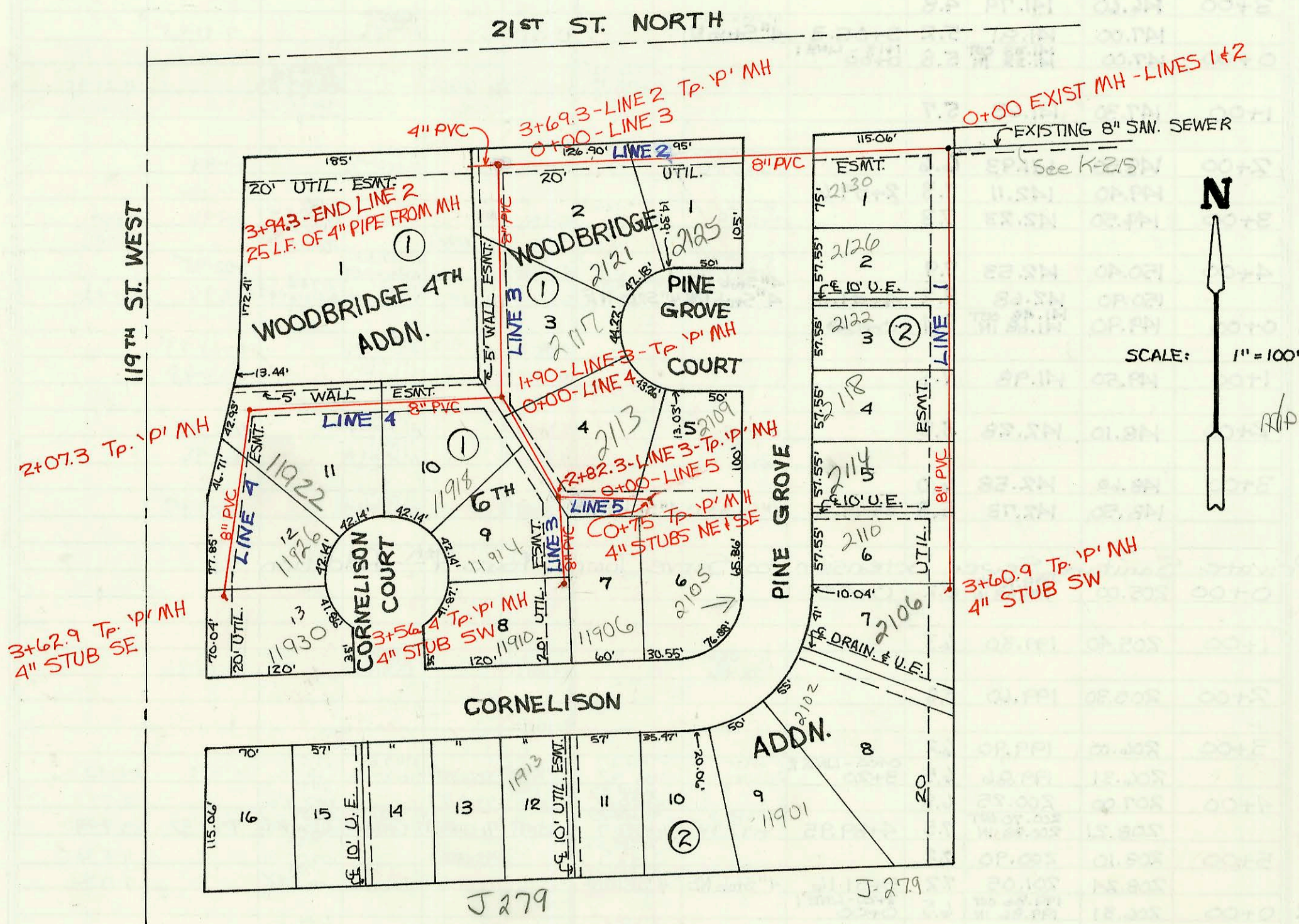
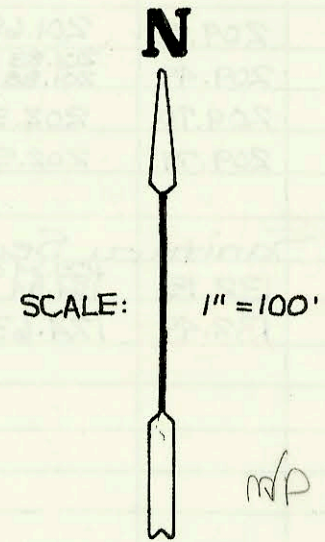


LATERAL 36, MAIN 12, COWSKIN INTERCEPTOR SEWER
PROJ. NO. 468-82233 (741231)
BUILT BY NOWAK CONSTRUCTION CO.
BOOKED 6-14-93 AS PER PLAN



PRIVATE SANITARY SEWER EXTENSION TO
SERVE LOT 1+2, BLK. 2, AIRPORT INDUSTRIAL
PARK ADDITION
PRIVATE PROJECT NO. 379 PPS (607861)
BUILT BY CONCO, INC.
BOOKED 6-15-93 FROM AS BUILTS



CONSTRUCTION RECORD							SERVICE RECORD					
STATION	ELEVATION		Depth	MANHOLE	4-INCH "Y" BRANCHES		No. of Permit		House Number		DATE OF PERMITS	
	Ground	Grade			North West	South East	North West	South East	North West	South East	North West	South East
Lateral 36, Main 12, Cowskin Interceptor Sewer												
LINE 1	0+00	166.37	155.37 OUT 157.31 IN	11.0	0+00	4" SDR 35 0+38.0		94-11700-7		2130 N Pine Grove		7-20-94
	1+00	166.30	157.77	8.5		4" SDR 35 0+75.0		94-3562-7		2126 Pine Grove		3-9-94
	2+00	166.00	158.17	7.8		4" SDR 35 1+37.0		94-7874-7		2118 Pine Grove		5-20-94
	3+00	165.70	158.57	7.1		4" SDR 35 2+97.3		94-4781-7		2114 N Pine Grove		3-29-94
LINE 2	0+00	165.70	158.81	6.9	3+60.9	4" SDR 35 4" Stub SW		94-1757-7		2110 Pine Grove		1-28-94
	1+00	168.70	155.95	12.8			4" sch 40 1+88.2	95-1304-7		2125 N Pine Grove		1-25-95
	2+00	168.90	156.45	12.5								
	3+00	168.90	156.95	12.0			4" SDR 35 2+90.3	94-16028-7		2121 Pine Grove		9-30-94
LINE 3	0+00	169.10	157.30 OUT 157.63 IN	11.8	0+00-LINE 3 3+69.3							
	1+00	169.60	157.90	11.7								
	2+00	169.10	158.30	10.8			4" SDR 35 1+53.0	94-12897-7		2117 N Pine Grove		8-5-94
	3+00	168.80	158.95	9.9			4" SDR 35 2+68.3	94-18626-7		2113 Pine Grove		11-9-94
LINE 4	0+00	169.50	159.26 OUT 158.46 IN	11.2	0+00-LINE 4 1+90	4" sch 40 PVC 4" Stub SW		94-8026-7		11910 Cornelison		5-20-94
	1+00	170.20	159.06	11.1			4" SDR 35 0+60.0	94-14914-7		11918 Cornelison		9-14-94
	2+00	171.20	159.65	11.6			4" SDR 35 1+60.7	95-5692-7		11922 Cornelison		4-14-95
	3+00	171.00	161.76	9.2			4" SDR 35 3+05.8	95-1128-7		11926 W Cornelison		1-20-95
LINE 5	0+00	169.10	158.63 OUT 158.83 IN	10.5	2+82.3-LINE 3 0+00	4" sch 40 PVC 0+25 Tap		94-18626-7		2113 N Pine Grove		11-9-94
	1+00	168.40	159.21	9.2	0+75	4" SDR 35 4" Stub NE		94-7876-7		2109 N Pine Grove		9-16-93
										2105 Pine Grove		5-20-94
Private Sanitary Sewer Extension To Serve Lots 1 & 2, Blk. 2, Airport Industrial Park Addition												
	0+00	111.10	102.40 OUT 105.56 IN	8.7	0+00							
		112.85	107.09	5.8	0+88.8	6" SDR 35 6" Stub NW		93-9879-7		1601 S Hooch Rd		4-29-93
Lateral 29, Main 12, SW *Continued From Page N-56												
	14+00	164.10	155.40	8.7		4" sch 40 PVC 13+87.57		94-17172-7	95-4721-7	11713 Jamesburg	11714 W 18th	10-19-94
		164.50	155.47	9.0	14+18.19	4" sch 40 14+27.14		94-18031-7	95-2014-7	11717 Jamesburg	11718 W 18th	11-2-94
	15+00	164.60	155.80	8.8		4" sch 40 15+28.2		94-8658-7	95-4522-7	11801 Jamesburg	11802 W 18th	6-3-94
						4" sch 40 15+63.2		94-8655-7	96-933-7	11805 Jamesburg	11806 W 18th	6-3-94
	16+00	165.20	156.20	9.0		4" sch 40 16+91.8		94-8656-7	95-2015-7	11807 Jamesburg	11808 W 18th	6-3-94
						4" sch 40 17+11.8		94-5372-7		11813 Jamesburg	11814 W 18th	4-13-94
	17+00	165.80	156.60	9.2		4" sch 40 17+83.8		94-5373-7	95-2016-7	11817 Jamesburg	11818 W 18th	4-13-94
	18+00	166.40	157.00	9.4								
		166.80	157.07	9.7	18+17.84	4" SDR 35 4" Stub NW	4" sch 40 4" Stub SW	93-8176-7	94-12286	11821 W Jamesburg	11822 W 18th N	4-14-93