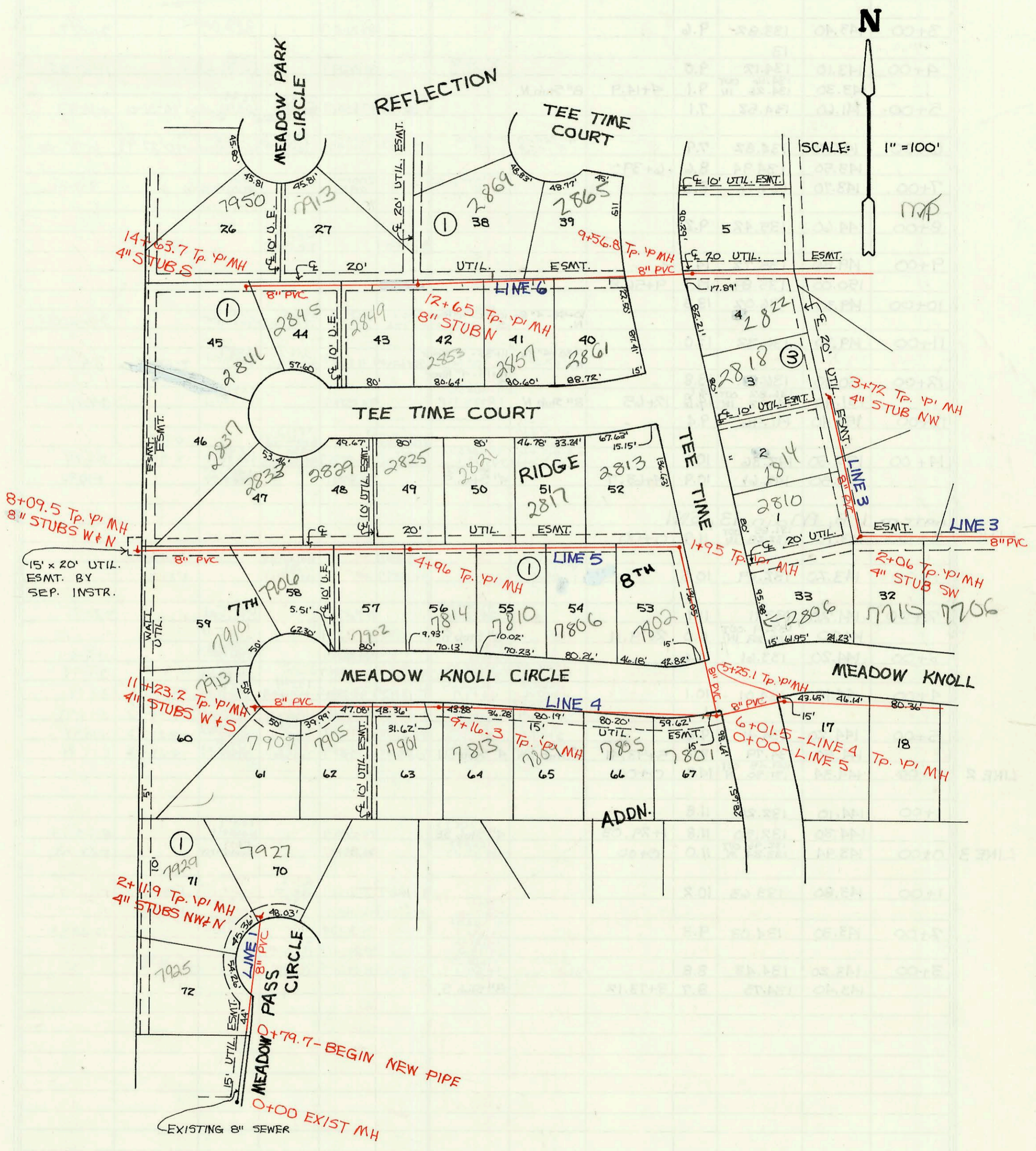


LATERAL 311, SWI  
PROJ. NO. 468-82210 (741207)  
BUILT BY W.B. CARTER CONST. CO.  
BOOKED 6-25-93 AS PER PLAN



CONSTRUCTION RECORD							SERVICE RECORD						
STATION	ELEVATION		Depth	MANHOLE	4-INCH "Y" BRANCHES		No. of Permit		House Number		DATE OF PERMITS		
	Ground	Grade			North West	South East	North West	South East	North West	South East	North West	South East	
LINE 1	Lateral 311, SW1												
	0+00	153.34	141.47 OUT 143.49 IN	11.9	0+00								
	0+79.7	153.60	143.81	9.8									
	1+00	153.70	143.89	9.8				93-5944-7	7925 W Meadowlark Cr.			3-24-93	
	2+00	154.00	144.29	9.7				93-5943-7	7929 W Meadowlark Cr			3-24-93	
LINE 2		154.30	144.34	10.0	2+11.9	4" stub NW 4" stub N		2001-0304	7927 Meadowlark Cr			5-29-01	
	0+00	141.13	131.24 OUT 131.64 IN	9.9	0+00								
	1+00	137.40	132.03	5.4									
	1+60.2	137.80	132.28	5.5									
	2+00	138.50	132.44	6.1									
		144.90	132.82	12.0	0+00-LINE 4 0+00-LINE 6 2+93.9								
	3+00	144.60	132.91	11.7									
		144.90	134.29	10.6	3+86.2								
	4+00	144.90	134.51	10.4				2002-02571	7702 Meadow Knoll			9-18-02	
						4" SDR 35 4+76.5		95-4694-7	2801 Spring Meadow			4-21-95	
	5+00	146.00	136.11	9.9									
		146.40	136.14	10.3	0+00-LINE 3 5+01.5								
		145.80	136.75	9.1	5+40.1	4" SDR 35 4" stub NE		93-18294-7	2805 W Spring Meadow			7-7-93	
LINE 3	0+00	146.40	136.14 OUT 136.34 IN	10.3	5+01.5-LINE 2 0+00			2002-02121	2809 N Spring Meadow	7705 Meadow Knoll		8-6-02	
	1+00	147.10	136.84	10.3				99-11472-7	2812 Spring Meadow	7710 Meadow Knoll		15-2-99	
						4" SDR 35 1+78.0	4" SDR 35 1+54.0	94-6044-7	2813 Spring Meadow	7710 Meadow Knoll		4-25-94	
	2+00	148.10	137.34	10.8									
		148.60	137.37 OUT 137.57 IN	11.2	2+06	4" stub SW		2001-01987	2810 Tee Time	2806 Tee Time		8-13-01	
	3+00	147.30	138.04	9.3				93-22591-7	2814 Tee Time	2818 Tee Time		8-31-93	
		146.90	138.40	8.5	3+72	4" stub NW		99-01113	2817 Tee Time	2817 Tee Time		11-4-99	
LINE 4	0+00	144.90	132.82 OUT 133.02 IN	12.1	2+93.9-LINE 2 0+00	4" SDR 35 0+55.9		96-11877-7	7705 Meadow Knoll	7659 Meadow Knoll		9-23-96	
		145.20	134.07 OUT 134.47 IN	11.1	0+61.9	4" stub S		96-16897-7	7659 Meadow Knoll	765 Meadow Knoll		10-10-96	
	1+00	144.60	135.12	9.5				94-1480-7	765 Meadow Knoll	765 Meadow Knoll		9-14-94	
	2+00	145.40	136.82	8.6				4" SDR 35 2+05.5 (top)	94-16035-7	7617 Meadow Knoll		9-30-94	
	3+00	147.10	138.52	8.6				4" SDR 35 3+84.9	94-18809-7	7701 Meadow Knoll		11-10-94	
		148.30	139.23	9.1	3+41.9			4" SDR 35 3+98.5	94-18164-7	7705 Meadow Knoll		11-9-94	
	4+00	148.90	139.46	9.4				4" SDR 35 4+66.1 (top)	94-17324-7	7709 Meadow Knoll		10-26-94	
		150.10	139.86	10.2									
		150.60	139.97	10.6	5+25.1								
	6+00	151.10	140.26	10.8	0+00-LINE 5 6+01.1			2001-00917	7801 W Meadow Knoll			4-17-01	
		151.10	140.27 OUT 141.77 IN	10.8				9000-00214	7805 Meadow Knoll			1-24-2000	
	7+00	151.30	142.46	8.8				4" SDR 35 7+30.5					
	8+00	151.60	143.16	8.4				4" SDR 35 8+49.3	94-19719-7	7813 Meadow Knoll		12-1-94	
	9+00	151.90	143.86	8.0									
		152.20	143.98	8.2	9+16.3			96-14123-7	7901 W Meadow Knoll			8-14-96	
	10+00	152.50	144.56	7.9				4" SDR 35 10+56.2	93-18295-7	7905 Meadow Knoll		7-7-93	
	11+00	152.80	145.26	7.5									
		153.20	145.42	7.8	11+23.2	4" stub W 4" stub S		93-16771-7	7913 Meadow Knoll	7907 Meadow Knoll		6-22-93	
LINE 5	0+00	151.10	140.27 OUT 140.47 IN	10.8	0+00			93-16771-7	7913 Meadow Knoll	7907 Meadow Knoll		6-22-93	
	1+00	150.50	140.87	9.6									
		150.00	141.25 OUT 141.45 IN	8.8	1+95								
	2+00	148.50	141.46	7.0				4" SDR 35 2+22.0	2001-03133	94-3555-7	2813 Tee Time	7802 Meadow Knoll	12-10-01
								97-15134-7	96-2142-7	2811 Tee Time	7806 Meadow Knoll	8-26-97	
	3+00	149.30	141.87	7.4				4" SDR 35 3+74 NK	97-1168-7	95-3222-7	2821 Tee Time	7810 Meadow Knoll	7-7-97
	4+00	150.30	142.27	8.0									
		151.60	142.65	9.0	4+96			4" SDR 35 4+90.0	93-31204-7	94-4234-7	2825 Tee Time	7814 Meadow Knoll	12-21-93
	5+00	151.30	142.66	8.6				4" PVC 40 5+16.0 tap	94-725-7	7902 Meadow Knoll Circle		1-18-94	
								4" SCH 40 6+04 SADDLE 4" SDR 35 6+38.6	2000-02517	2829 Tee Time	2823 Tee Time	7906 W Meadow Knoll	11-17-00
	6+00	152.20	143.07	9.1				95-3104-7	2002-01503	7906 W Meadow Knoll		3-8-95	
	7+00	153.10	143.47	9.6				4" SDR 35 7+28.5	94-2456-7	7910 W OR Meadow Knoll		8-13-94	
	8+00	154.50	143.87	10.6									
		155.90	143.91	12.0	8+09.5	8" stub N 8" stub W							
LINE 6	* See Page N-59 (Continued)												