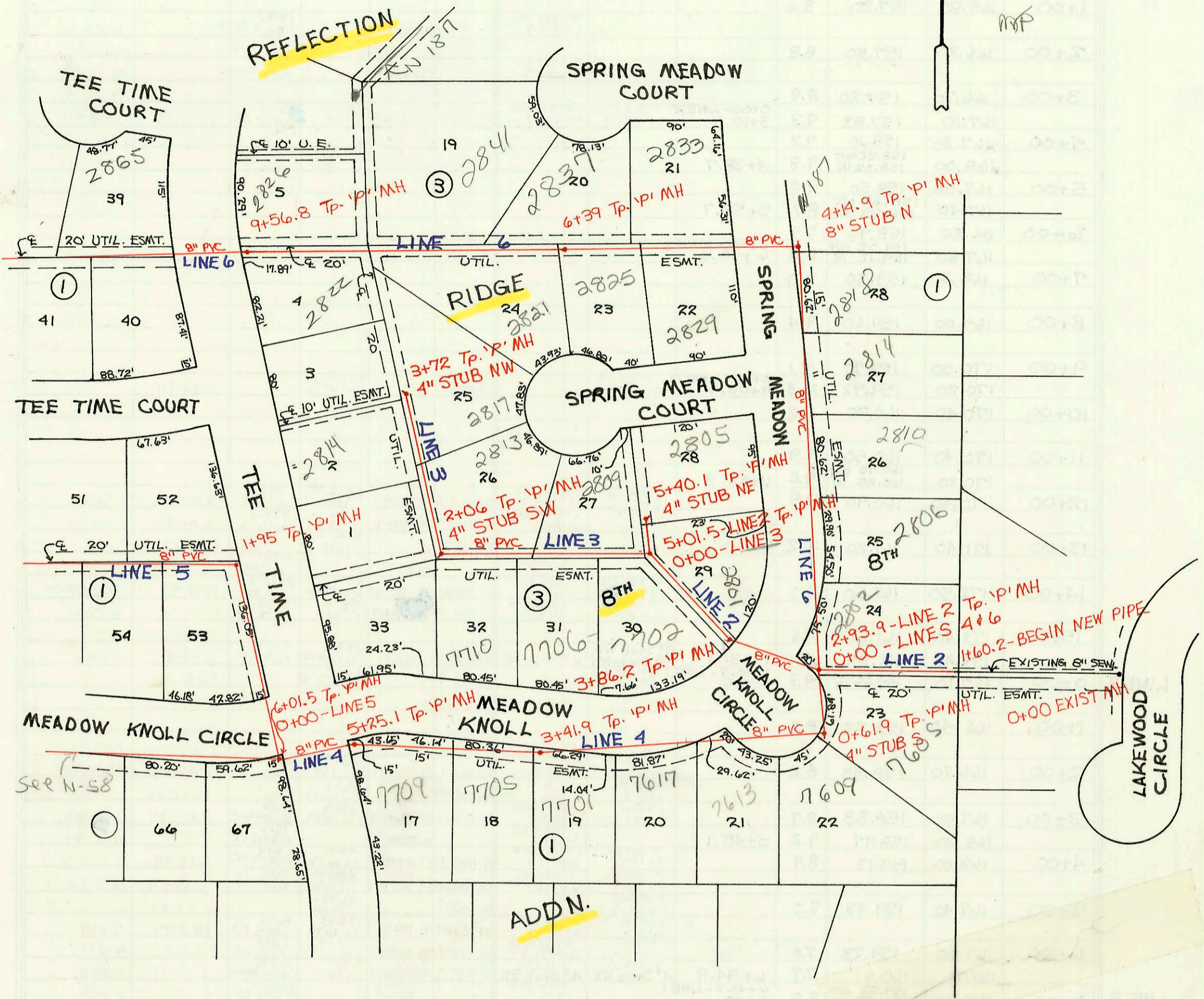


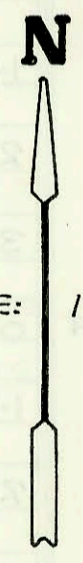
LATERAL 311, SW1  
PROJ. NO. 468-82210 (741207)  
BUILT BY W.B. CARTER CONST. CO.  
BOOKED 6-25-93 AS PER PLAN



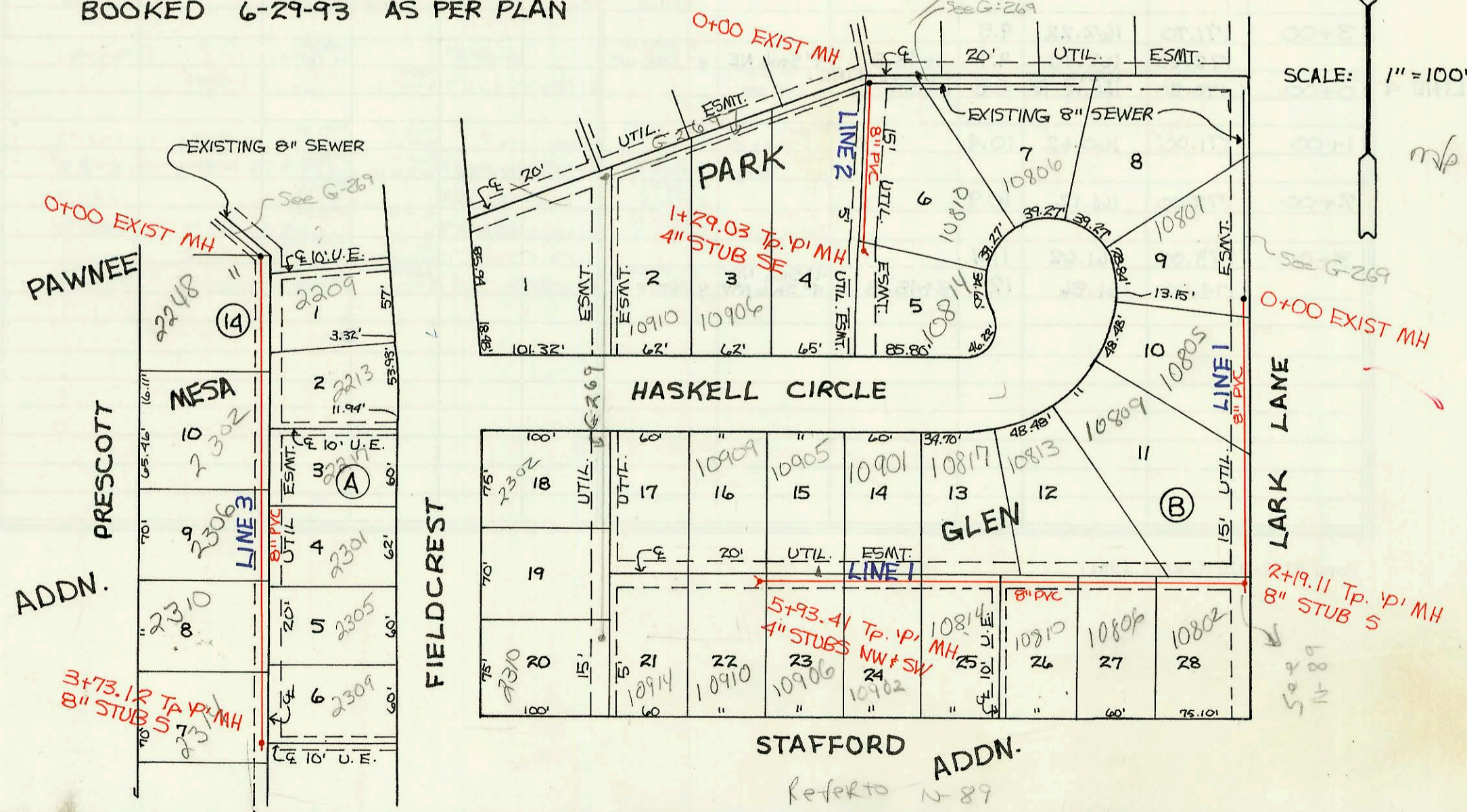
SCALE: 1" = 100'



LATERAL 8, MAIN 13, SW1  
PROJ. NO. 468-82244 (741280)  
BUILT BY MIES CONST. CO.  
BOOKED 6-29-93 AS PER PLAN



SCALE: 1" = 100'



CONSTRUCTION RECORD							SERVICE RECORD							
STATION	ELEVATION		Depth	MANHOLE	4-INCH "Y" BRANCHES		No. of Permit		House Number		DATE OF PERMITS			
	Ground	Grade			North West	South East	North West	South East	North West	South East	North West	South East		
LINE 6	Lateral 1 311, SW1 (Continued from N-58)													
	0+00	144.90	132.82 OUT 132.92 IN	12.1	2+93.9 - LINE 2	4" SCH 40 0+59.0	97-1174(6)	2802	2802	Springs Meadow		9-5-96		
	1+00	144.10	133.22	10.9		4" SCH 40 1+87.6	98-489-7	2806	2806	Springs Meadow		3-9-98		
	2+00	143.60	133.52	10.1			94-11121-7	2810	2810	Spring Meadow		7-11-94		
	3+00	143.40	133.82	9.6			97-2418-7	2814	2814	Springs Meadow		2-20-97		
	4+00	143.10	134.12	9.0		4" SCH 40 4+01.3	95-1999(7)	2818	2818	Springs Meadow		11-27-95		
	5+00	141.60	134.52	7.1	4+14.9	8" Stub N	2001- 02757	97-6526-7	2833	2829	Springs Meadow	10-31-01	4-18-97	
	6+00	142.70	134.82	7.9		4" SCH 40 5+74.9	99-05983	2000- 01497	2837	2825	Springs Meadow	10-22-99	6-22-00	
	7+00	143.50	134.94	8.6	6+39			2001- 0813	2821	2821	Spring Meadow		8-2-01	
	8+00	144.60	135.42	9.2					2826	2826	Tree time		10-27-97	
	9+00	149.80	135.72	14.1										
	10+00	150.00	135.89	14.1	9+56.8									
	11+00	149.30	136.02	13.3		10+55-4" Ris N.	4" SCH 40 S. 10+50.0	2002 00342	2000- 00297	2865	2861	Tree time		2-3-2000
	12+00	150.40	136.62	13.8		11+80-4" Ris N	11+35-4" Riser S. 52' 6" Ball 12+15-4" Riser S.	98-16427	94-3567	2869	2857	Tree time	9-30-96	3-9-94
13+00	151.40	141.96	9.4	12+65	8" Stub N	4" SCH 40 12+85 Tap	94-3559-7		2849	2849	Tree time		3-9-94	
14+00	152.50	142.36	10.1		4" SCH 40 13+65.7	4" SCH 40 PVC 14+41.7 Saddle	1997-00400	2001- 00296	94-2895-7	2845	2845	Tree time	2-9-01	3-1-94
	153.50	142.61	10.9	14+63.7	4" Stub S	4" SCH 40 14+10.1	95-5125-7		2841	2841	Tree time		4-10-95	
LINE 1	Lateral 1 8, Main 13, SW1													
	0+00	143.75	131.85 OUT 132.28 IN	11.9	0+00	4" SCH 40 0+59.0	93-31252-7		10805	10805	Haskell		12-20-93	
	1+00	143.70	132.69	10.5		4" SCH 40 1+24.4	94-1087-7		10809	10809	Haskell		1-24-94	
	2+00	144.20	133.11	11.1		4" SCH 40 2+53.6	95-7627-7		10802	10802	Stafford		5-22-95	
	3+00	144.20	133.19 OUT 133.28 IN	11.0	2+19.11	8" Stub S								
	4+00	144.10	133.61	10.6		4" SCH 40 3+24.1	94-1921-7							
	5+00	144.20	134.01	10.1		4" SCH 40 3+59.1	93-18992-7	94-2894-7	10815	10810	Haskell	10-8-93	3-1-94	
	6+00	144.10	134.01	10.1		4" SCH 40 4+00.4	93-18992-7	94-2894-7	10817	10814	Haskell	7-13-93	3-1-94	
	7+00	144.20	134.41	9.8		4" SCH 40 4+76.4	93-18992-7	94-7487-7	10901	10902	Stafford	7-13-93	5-18-94	
	8+00	144.50	134.79	9.7	5+93.41	4" Stub NW	4" SCH 40 5+72.0	93-22602-7	94-7450-7	10905	10906	Stafford	8-23-93	5-18-94
LINE 2	0+00	144.34	129.45 OUT 131.50 IN	14.9	0+00	4" SCH 40 0+35.0	93-22601-7	94-7451-7	10909	10910	Stafford	8-23-93	5-18-94	
	1+00	144.10	132.28	11.8		4" SCH 40 1+79.03	94-2490-7		10814	10814	Haskell		2-23-94	
LINE 3	0+00	143.94	132.96 OUT 133.24 IN	11.0	0+00	4" SCH 40 0+35.0	93-22594-7		2209	2209	Fieldcrest		8-23-93	
	1+00	143.80	133.63	10.2		4" SCH 40 1+56.0 top	97-11636-7		2302	2302	Prescott		1-24-97	
	2+00	143.30	134.03	9.3		4" SCH 40 2+36.5	97-2838-7	93-3107-7	2306	2279	Fieldcrest	12-23-97	12-20-94	
	3+00	143.20	134.43	8.8		4" SCH 40 2+79.5	93-29348-7		2310	2301	Fieldcrest		12-20-93	
	143.40	134.73	8.7	3+73.12	8" Stub S	4" SCH 40 3+54.1	95-20587-7	93-29369-7	2314	2309	Fieldcrest	12-4-95	11-12-93	

94-35567 3-9-94 2857 N-tee time Ct - Riser 169' W of MH 9+56.8 (Riser 59' 117258)  
4" SCH 40 (Note: this disc. sleep)  
with Riser Meas of 11+35.95 booked above)