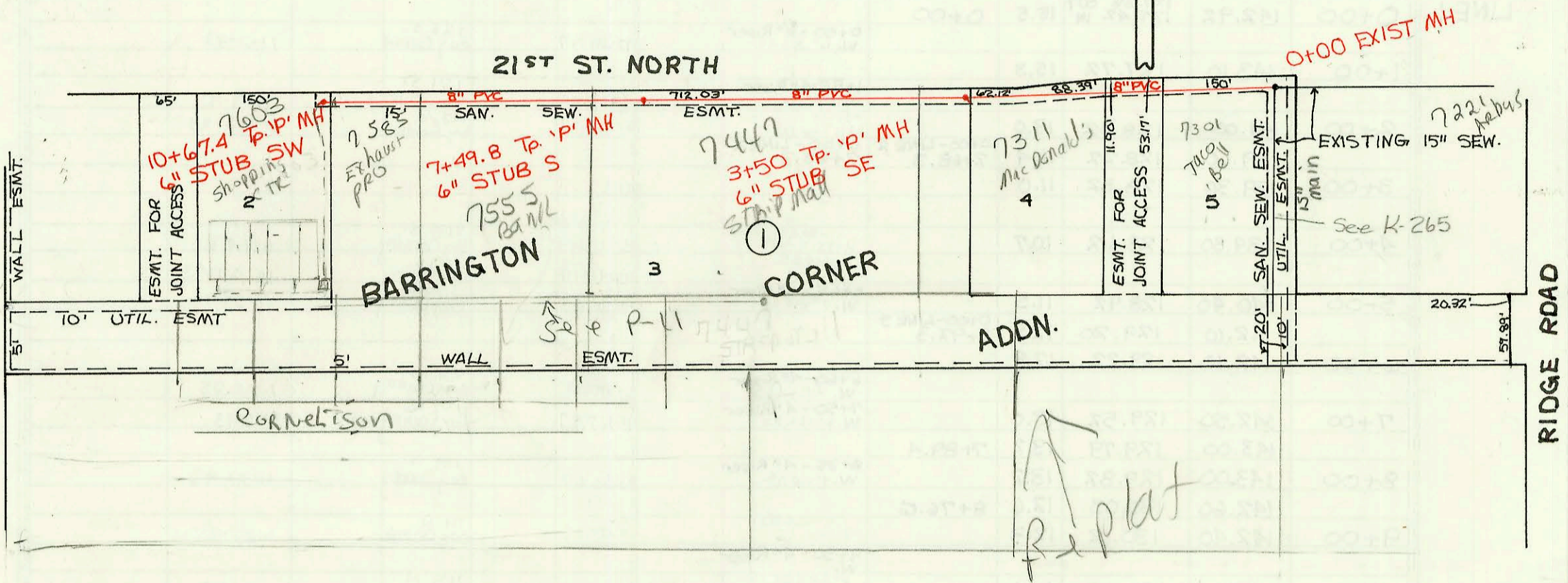


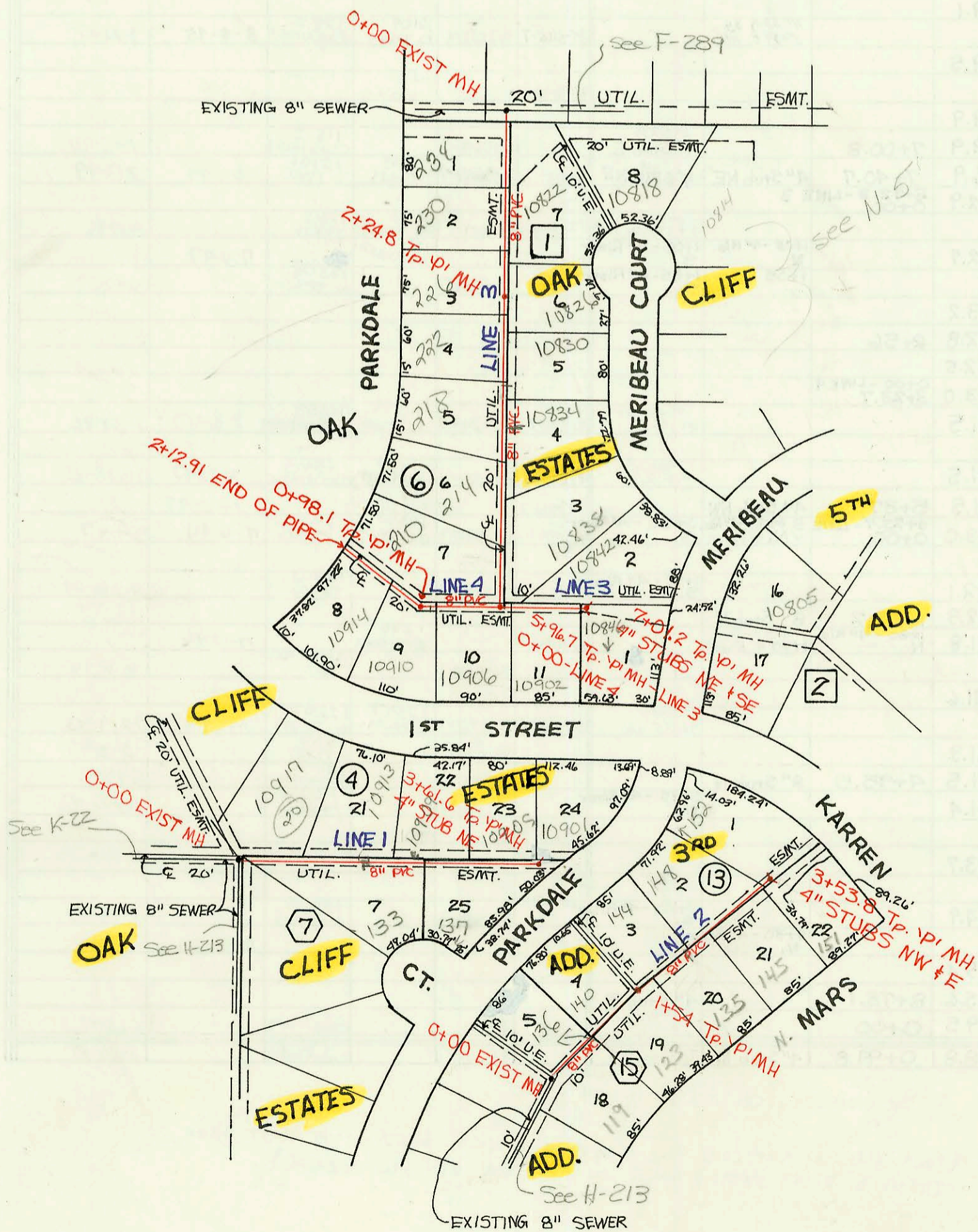
LATERAL 13, MAIN 15, SWI
PROJ. NO. 468-81908 (741397)
BUILT BY DULING CONST. CO.
BOOKED 6-30-93 FROM AS BUILTS

Line not to scale

SCALE: 1" = 150'



PRIVATE SANITARY SEWER EXTENSIONS FOR OAK CLIFF ESTATES ADDITION -
LOT 7, BLK. 7, LOTS 5; LOTS 18-22, BLK. 15, OAK CLIFF ESTATES 3RD ADDITION -
LOTS 21-25, BLK. 4, LOTS 1-11, BLK. 6, LOTS 1-4, BLK. 13, OAK CLIFF ESTATES 5TH
ADDITION - LOTS 1-8, BLK. 1, LOTS 16 & 17, BLK. 2
PRIV. PROJ. NO. 349 PPS (607861)
BUILT BY DONDLINGER & SONS CONST. CO.
BOOKED 7-1-93 FROM AS BUILTS



SCALE: 1" = 150'



CONSTRUCTION RECORD							SERVICE RECORD					
STATION	ELEVATION		Depth	MANHOLE	4-INCH "Y" BRANCHES		No. of Permit		House Number		DATE OF PERMITS	
	Ground	Grade			North West	South East	North West	South East	North West	South East	North West	South East
Lateral 13, Main 15, SW1												
0+00	143.10	127.68 OUT 131.05 IN	15.4	0+00		4" SCH 40 PVC 0+0.8		95-719-7		7301 W. 157 ST. W.		1-18-95
1+00	142.90	131.47	11.4									
2+00	143.00	131.90	11.1									
3+00	143.30	132.32	11.0									
4+00	143.72	132.54 OUT 132.58 IN	11.2	3+50		6" SDR 35 6" Stub SE		93-1417-7		73" W 21st		6-7-93
5+00	144.00	133.14	10.9									
6+00	144.10	133.51	10.6					99-574-7		17447 W. 21st		1-11-99
7+00	144.10	133.89	10.2									
8+00	144.50	134.08	10.4	7+49.8		6" Stub S						
9+00	144.30	134.27	10.0									
9+00	144.50	134.66	9.8			4" sch 40 10+74.8		88587		8585 W. 21st		5-20-98
10+00	146.00	135.04	11.0									
	147.04	135.31	11.7	10+67.4		6" Stub SW						
Private Sanitary Sewer Extension For Oak Cliff Estates Add., Oak Cliff Estates 3rd Add., Oak Cliff Estates 5th Add.												
0+00	152.90	138.94 OUT 138.94 IN	14.0	0+00		4" PVC 40 0+36 Tap		95-2890-7		10917 W. 1st		3-1-95
1+00	150.90	139.39	11.5									
2+00	150.10	139.84	10.3			4" SDR 35 1+52.0		94-3640-7		135 N Parkdale		3-11-94
3+00	149.00	140.29	8.7			4" PVC 40 2+11.0 tap 4" SDR 35 2+56.0 4" SDR 35 3+07.6 4" sch 40 3+07.6 4" sch 40 3+07.6	4" PVC 40 2+63.6	93-21323-7 94-4176-7 94-3270-7	99-2259-7	10913 W. 1st 10909 W. 1st 10905 W. 1st 10901 W. 1st	137 N Parkdale	8-9-93 3-24-94 3-11-94
0+00	147.91	134.84 OUT 135.13 IN	13.1	0+00		4" SDR 35 0+37.0 4" sch 40 1+21.0	4" SDR 35 0+11.0	94-24236-7 74-6666-7	93-21047-7	136 N Parkdale 140 N Parkdale	119 N Mars 123 N Mars	8-9-93 9-12-93 4-29-94
1+00	147.00	135.46 135.65 OUT 135.73 IN	11.5			4" PVC 40 1+91.0	4" SDR 35 1+26.0	93-25347-7		144 N Parkdale	123 N Mars	4-23-93 10-8-93
2+00	147.50	135.91	11.6	1+54			4" SDR 35 2+26	93-2159-7		148 N Parkdale	125 N Mars	4-23-93 10-20-93
3+00	146.50	136.31	10.2			4" PVC 40 2+84.8 tap	4" SDR 35 3+12.8	93-21380-7		148 N Parkdale	145 N Mars	8-9-93 10-8-93
0+00	145.80	136.53 138.79 OUT 138.93 IN	9.3	3+53.8		4" PVC 40 4" Stub NW	4" SDR 35 4" Stub E	93-21381-7	93-26487-7	152 N Parkdale	151 N Mars	9-9-93 10-8-93
0+00	150.77	138.79 OUT 138.93 IN	12.0	0+00		4" sch 40 10.8 tap	4" sch 40 10.8 tap	93-7000-7		1222 W Maribou ct		4-2-92
1+00	150.33	139.27	11.1				4" SDR 35 1+11 Tap	97-1396-7		224 N Parkdale		8-11-97
2+00	150.40	139.62	10.8			4" SDR 35 1+54.6 4" SDR 35 2+04 Tap		93-1655-7 95-1762-7		10322 W Meribou ct 230 N Parkdale	10820 W Meribou ct	5-22-95 2-16-94
3+00	150.36	139.70	10.7	2+24.8				94-12505-7		226 N Parkdale		8-3-94
3+00	150.60	139.97	10.6			4" SDR 35 3+82.1 4" sch 40 3+59.7	4" SDR 35 3+29.7 4" SDR 35 3+82.7	94-18327-7 94-6662-7	93-29707-7 93-10053-7	282 N Parkdale 218 N Parkdale	10830 Meribou 10824 Meribou	11-9-94 4-29-94 4-3-93
4+00	150.70	140.31	10.4			4" sch 40 4+53.7	4" sch 40 4+79.7	93-6172-7	96-6236-7	214 N Parkdale	10835 Meribou	4-26-95 4-30-94
5+00	149.80	140.66	9.1					91-251-7				
6+00	149.30	141.00	8.3	0+00 - LINE 4 5+96.7		4" SDR 35 5+36.7		95-18048-7		210 N Parkdale		10-30-95
7+00	148.60	141.51	7.1			4" sch 40 6+69.2		93-25310-7		10902 W. 1st	10902 W. 1st	9-23-93
0+00	148.40	141.52 141.00 OUT 141.09 IN	6.9	7+01.2		4" PVC 40 4" Stub NE	4" SDR 35 4" Stub SE	93-21327-7	93-25309-7	10942 W Meribou ct	10846 W 1st St	8-9-93 9-23-93
0+00	149.30	141.09 IN	8.3	5+96.7 - LINE 3 0+00		4" SDR 35 0+36.0 4" PVC 40 0+86.0		93-24237-7		10906 W. 1st	10910 W. 1st	9-12-93 8-9-93
1+00	150.00	141.53 OUT 141.57 IN	8.5	0+98.1				93-21328-7				
2+00	150.20	141.99	8.2			4" SDR 35 1+64.7		94-18238-7		10944 W 1st		11-8-94
2+12.91	150.20	142.05	8.1									