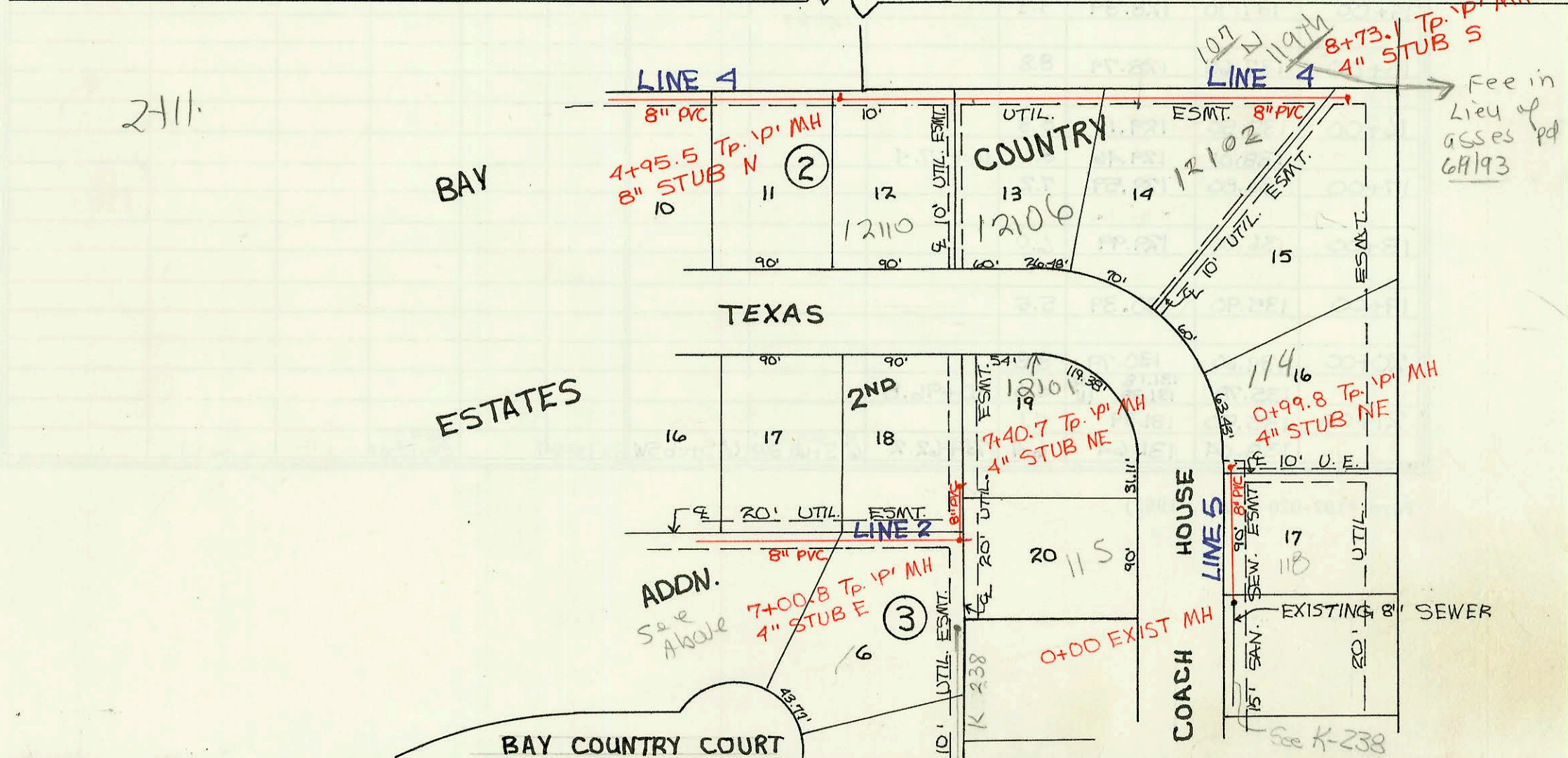
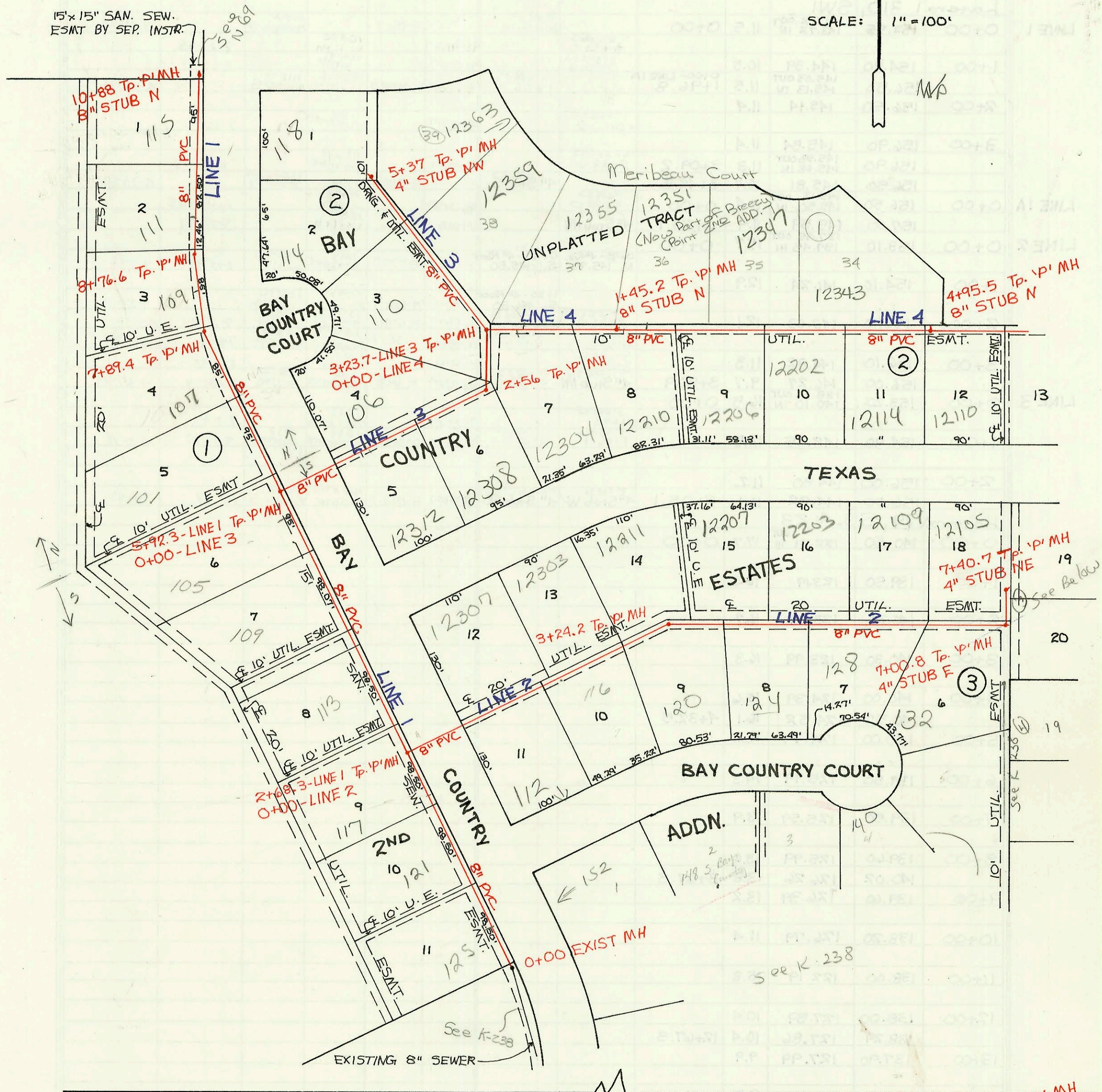


LATERAL 14, MAIN I, COWSKIN INTERCEPTOR SEWER
PROJ. NO. 468-82238 (741223)
BUILT BY NOWAK CONSTRUCTION CO.
BOOKED 7-2-93 AS PER PLAN



SCALE: 1" = 100'



CONSTRUCTION RECORD							SERVICE RECORD						
STATION	ELEVATION		Depth	MANHOLE	4-INCH "Y" BRANCHES		No. of Permit		House Number		DATE OF PERMITS		
	Ground	Grade			North West	South East	North West	South East	North West	South East	North West	South East	
LINE 1	Lateral 14, Main 1, Cowskin Interceptor Sewer												
	0+00	142.92	127.38 OUT 127.42 IN	15.5	0+00	0+50 - 4" Riser W. 4" SDR 40	93-28574-7		125 S. Bay County			11-2-93	
	1+00	143.10	127.72	15.3		1+55 - 4" Riser W. 4" SDR 35	93-17181-7		121 S. Bay County			7-9-93	
	2+00	141.00	128.02	13.0	0+00 - LINE 2 2+68.3	4" SDR 35 2+11.7 Tap N/C	93-16767-7		117 S. Bay County			6-22-93	
		139.60	128.22	11.4									
	3+00	139.30	128.32	11.0									
	4+00	139.30	128.62	10.7		4" SDR 35 4+32.3 Tap 4" SDR 35 4+92.3	93-11163-7		113 S. Bay County			6-9-93	
	5+00	140.40	128.92	11.5	0+00 - LINE 3 5+92.3	5+65 - 4" Riser W. 4" SDR 35	93-14639-7		109 S. Bay County			12-22-93	
		142.10	129.20	12.9									
	6+00	142.10	129.22	12.9			93-10231-7		105 S. Bay County			6-28-94	
7+00	142.50	129.52	13.0	7+89.4	6+60 - 4" Riser W. 4" SDR 35	95-11716-7		101 N. Bay County			1-20-95		
	143.00	129.79	13.2										
8+00	143.00	129.82	13.2	8+76.6	7+50 - 4" Riser W. 4" SDR 35	93-12778-7		107 N. Bay County			5-17-93		
	142.60	130.05	12.6										
9+00	142.40	130.12	12.3		8+35 - 4" Riser W. 4" SDR 35	93-32351-7		109 N. Bay County			12-22-93		
10+00	141.80	130.42	11.4	10+88	4" SDR 35 9+01.6	95-19514-7		111 N. Bay County			11-27-95		
	141.40	130.65	10.8										
LINE 2	0+00	139.60	128.22 OUT 129.72 IN	11.4	0+00	8" Stab N							
	1+00	139.90	130.37	9.5		4" SDR 35 1+23.2	95-11117-7	93-31170-7	12301 W. TEXAS	112 S. Bay County		9-5-95	
	2+00	141.30	131.02	10.3	3+24.2	4" sch 40 PVC 2+07.2	4" sch 40 PVC 1+90.2	94-22637-7	12305 TEXAS	116 S. Bay County		7-18-94	
		142.60	131.67	10.9									
	3+00	143.40	133.83 OUT 133.83 IN	11.6	3+24.2	4" SDR 35 3+14.6	4" SDR 35 2+88.7	96-5351-7	12211 TEXAS	120 Bay County		4-15-96	
		143.90	134.66	9.2									
	4+00	143.90	134.66	9.2		4" SDR 35 4+56.2	94-20693-7	98-11645-7	12207 W. TEXAS	124 Bay County		12-15-94	
	5+00	144.90	135.76	9.1		4" SDR 35 5+57.8 N/C	96-13236-7		12203 TEXAS			8-12-96	
	6+00	146.40	136.86	9.5			95-3105-7	97-15707-7	12104 W. TEXAS	128 S. Bay County		3-8-95	
	7+00	147.90	137.96	9.9	7+00.8	4" SDR 35 7+07.1	4" SDR 35 4" Stab E	97-18605-7		115 S. Coach House			11-15-94
147.90		139.97 IN	9.9										
8+00	148.30	141.37	6.9	8+40.7	4" sch 40 8+33.8	4" Stab NE	97-9189-7	97-36437-7	12105 TEXAS	12101 TEXAS		6-4-97	
	142.10	129.20 OUT 129.48 IN	12.9										
LINE 3	0+00	142.10	129.20 OUT 129.48 IN	12.9	0+00	5+92.3 - LINE 3							
	1+00	142.50	129.80	12.7		1+05 - 4" Riser N	4" SDR 35 1+18.0 TAP	97-77587-7	12343 Meribeauc	12312 TEXAS		5-17-96	
	2+00	143.40	130.20	13.2	2+56	1+00 - 4" Riser S	4" SDR 35 1+00 - 4" Riser S	97-13627-7	106 N. Bay County			7-31-97	
		143.20	130.42 OUT 130.62 IN	12.8									
	3+00	143.30	130.80	12.5	3+23.7	1+85 - 4" Riser S		97-6937-7	12308 W. TEXAS			4-17-97	
		143.90	130.89 OUT 132.39 IN	13.0									
	4+00	144.30	132.83	11.5		4" SDR 35 4+10.3	97-9181-7	96-12497-7	110 N. Bay County	12359 W. Meribeauc		3-31-97	
	5+00	144.70	133.23	11.5	5+37	4" sch 40 5+13.5	4" sch 40 5+13.5	97-6895-7	95-16547-7	114 N. Bay County	12363 Meribeauc		4-28-97
		144.70	133.25	11.5									
	LINE 4	0+00	143.90	130.89 OUT 131.09 IN	13.0	0+00	3+23.7 - LINE 4	0+35 - 4" Riser S	97-11847-7	97-15482-7	12353 Meribeauc	12304 TEXAS	7-6-94
1+00		144.50	132.39	12.1		1+30 - 4" Riser S		97-16954-7		12210 TEXAS		9-26-97	
2+00		145.30	132.98	12.3	2+45.2	4" sch 40 1+80 4" Riser N	4" SDR 35 2+86.2	96-11240-7	96-9235-7	12351 Meribeauc	12206 W. TEXAS		7-12-96
		145.50	133.69	11.8									
3+00		146.60	134.99	11.6		4" sch 40 PVC 3+38.5 Tap	4" sch 40 PVC 3+38.5 Tap	97-16537-7	93-30627-7	12347 Meribeauc	12202 W. TEXAS	9-15-97	
4+00		147.60	136.29	11.3	4+95.5	8" Stab N	5+95 - 4" Riser S	97-2887-7	92-9443-7	12114 TEXAS	12110 W. TEXAS		2-12-97
		149.00	137.53	11.5									
5+00		149.00	137.57	11.4				97-18563-7		12106 TEXAS		5-15-98	
6+00		152.30	138.58	13.7									
7+00		154.50	139.58	14.9	7+30	4" sch 40 7+07.1 Riser S	4" sch 40 7+07.1 Riser S	97-66747-7		12152 W. TEXAS			4-28-97
	154.50	139.58	14.9										
8+00	156.00	140.58	15.4	8+73.1	7+30 - 4" Riser N. 4" SDR 35		93-14637-7		107 N. 1474 S			6-9-93	
	156.90	141.31	15.6										
LINE 5	0+00	150.99	141.50 OUT 141.71 IN	9.5	0+00	4" Stab S	4" sch 40 0+49.8	97-		112 S. Coach House		5-28-97	
	151.50	142.71	8.8	0+99.8	4" SDR 35 4" sch 40 0+49.8	97-16543-7			114 S. Coach House			6-24-97	

Form #192-020 (July, 1981)

96-13630-7 814-96 132 S. Bay country ct. TAP 7+54 8

*97-105437 - 114 S. Coach House - (Note bldg. line kicks out N-side of house close to front - goes west then turns S. across front of house to hit stub at SW corner)