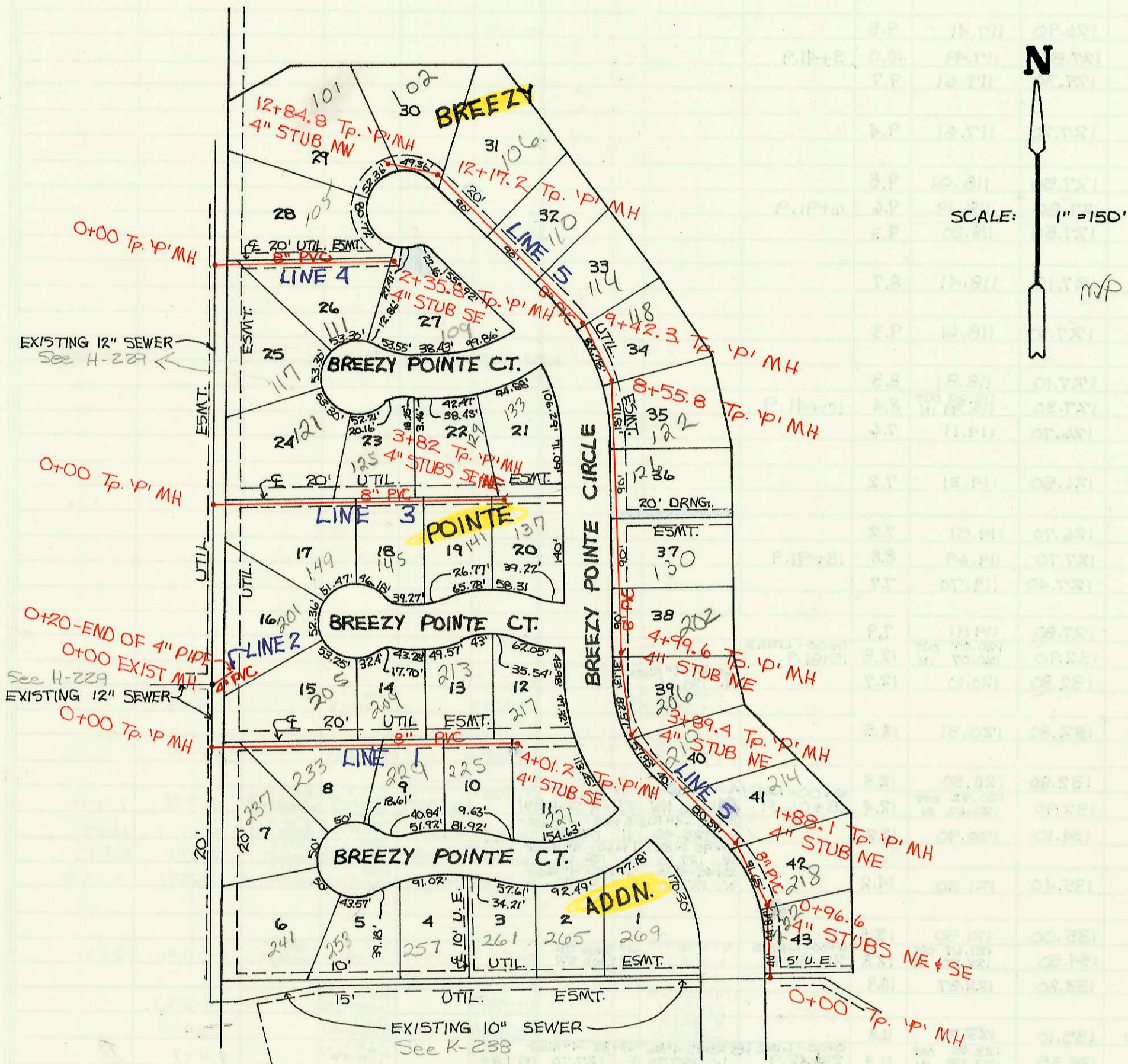
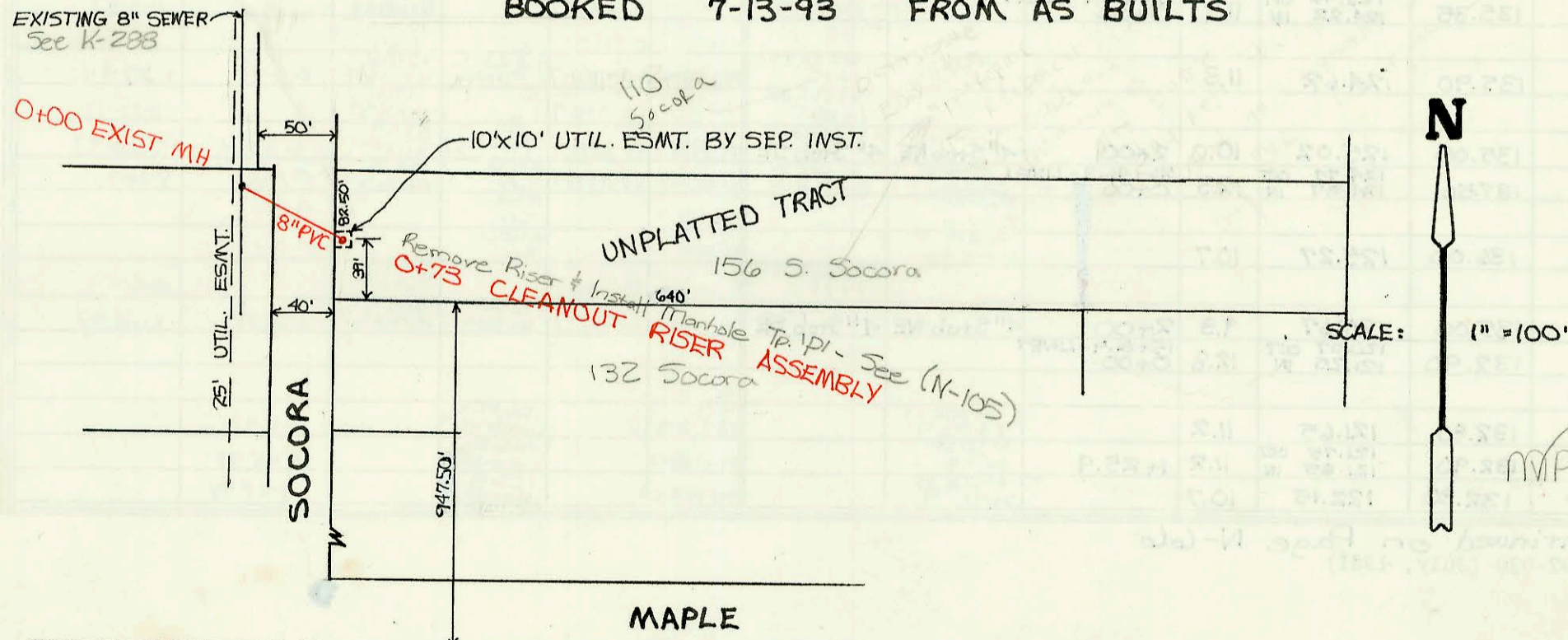


LATERAL 10, MAIN 1, COWSKIN INTERCEPTOR SEWER
PROJ. NO. 468-82216 (741173)
BUILT BY DONDLINGER & SONS CONST. CO.
BOOKED 7-12-93 AS PER PLAN



PRIVATE SANITARY SEWER EXTENSION TO
SERVE 156 S. SOCORA
PRIV. PROJ. NO. 392 PPS (607861)
BUILT BY McCULLOUGH EXCAVATION
BOOKED 7-13-93 FROM AS BUILTS



CONSTRUCTION RECORD							SERVICE RECORD						
STATION	ELEVATION		Depth	MANHOLE	4-INCH "Y" BRANCHES		No. of Permit		House Number		DATE OF PERMITS		
	Ground	Grade			North West	South East	North West	South East	North West	South East	North West	South East	
Lateral 10, Main 1, Cowskin Interceptor Sewer													
LINE 1 0+00	134.90	124.38 OUT 124.71 IN	10.5	0+00		4" SDR 35 5010 top wk		93-15738-7		237 S. Breezy Pt		6-17-93	
1+00	135.40	125.65	9.8			4" SDR 35 1+66.0	94-6517-7	93-18298-7	205 Breezy Pt	233 S. Breezy Pt	4-16-98	7-7-93	
2+00	134.80	126.60	8.2			4" SDR 35 2+43.2	93-8314-7	94-7459-7	209 Breezy Pt	289 S. Breezy Pt	5-15-98	5-18-94	
3+00	135.60	127.54	8.1			4" SDR 35 3+07.2		93-2854-7	213 Breezy Pt			12-22-93	
4+00	136.60	128.48	8.1			4" SDR 35 3+93.2		94-10337-7	217 Breezy Pt	285 S. Breezy Pt		6-2-94	
	136.60	128.50	8.1	4+01.2		4" SDR 35 4" Stub SE		94-10218-7		221 S. Breezy Pt		6-24-94	
LINE 2 0+00	136.90	124.50 OUT 126.50 IN	12.4	0+00		4" SDR 35 11" Stub		93-20419-7		201 S. Breezy Pt		8-2-93	
LINE 3 0+00	135.90	125.00 OUT 125.33 IN	10.9	0+00		4" SDR 35 20" King							
1+00	135.90	125.96	9.9			4" SDR 35 1+09.0	4" SDR 35 1+35.4 top wk	94-14940-7	93-16774-7	121 S. Breezy Pt	144 S. Breezy Pt	9-14-94	6-22-93
2+00	135.30	126.60	8.7			4" SDR 35 2+15	4" SDR 35 3+48.0	94-14935-7	97-3412-7	125 Breezy Pt	145 S. Breezy Pt	9-14-94	3-10-97
3+00	136.40	127.23	9.2			4" SDR 35 3+36.4	4" SDR 35 3+48.0	93-2805-7	93-28016-7	129 S. Breezy Pt	141 S. Breezy Pt	10-27-93	10-27-93
LINE 4 0+00	136.50	125.87 OUT 126.20 IN	10.6	0+00	3+87	4" Stub NE 4" Stub SE	4" SDR 35 6+44.0	93-3136-7	94-4771-7	135 S. Breezy Pt	137 S. Breezy Pt	12-22-93	3-29-94
1+00	137.20	127.41	9.8			4" SDR 35 0+98.0		94-20421-7		105 S. Breezy Pt		4-12-94	
2+00	138.30	128.62	9.6			4" SDR 35 1+78.8		94-14941-7		111 S. Breezy Pt		9-14-94	
LINE 5 0+00	138.60	129.05	9.6	2+35.8		4" Stub SE		94-3504-7		109 S. Breezy Pt		3-9-94	
	136.80	122.54 OUT 122.71 IN	14.3	0+00		4" SDR 35 4" Stub NE	4" SDR 35 4" Stub SE	94-9245-7	94-10219-7	218 S. Breezy Pt	222 S. Breezy Pt	7-14-94	6-24-94
1+00	136.10	123.10 OUT 123.20 IN	13.0	0+96.6		4" SDR 35 4" Stub NE	4" SDR 35 4" Stub SE						
	136.10	123.21	12.9			4" SDR 35 1+88.1	4" SDR 35 4" Stub NE	94-10877-7		214 S. Breezy Pt		7-11-94	7-11-94
2+00	136.60	123.67	12.9	1+88.1		4" SDR 35 2+88.4	4" SDR 35 1+291.0			210 S. Breezy Pt		6-24-94	
3+00	137.10	124.12	13.0			4" SDR 35 3+89.4	4" SDR 35 4" Stub NE			206 S. Breezy Pt		2-15-94	
4+00	137.50	124.48 OUT 124.58 IN	13.0	3+89.4		4" SDR 35 4" Stub NE	4" SDR 35 4" Stub NE	94-2065-7				12-15-93	2-15-94
	137.50	124.62	12.9			4" SDR 35 4" Stub NE	4" SDR 35 4" Stub NE			202 S. Breezy Pt		1-20-95	
5+00	137.80	125.07 OUT 125.12 IN	12.8	4+99.6		4" SDR 35 4" Stub NE	4" SDR 35 4" Stub NE	95-887-7					
6+00	137.80	125.13	12.7			4" SDR 35 6+00.0	4" SDR 35 6+00.0			130 S. Breezy Pt		11-5-93	
7+00	136.40	125.92	10.5			4" SDR 35 7+00.0	4" SDR 35 7+00.0						
8+00	136.70	126.32	10.4			4" SDR 35 8+41.0	4" SDR 35 8+41.0	98-15526-7		126 S. Breezy Pt		8-11-97	
	137.20	126.54 OUT 126.64 IN	10.7	8+55.8		4" SDR 35 8+61.8	4" SDR 35 8+61.8	94-5243-7		122 S. Breezy Pt		4-12-94	
9+00	137.40	126.82	10.6			4" SDR 35 9+42.3	4" SDR 35 9+42.3	94-5244-7		118 S. Breezy Pt		4-12-94	
	137.50	126.99 OUT 127.09 IN	10.5	9+42.3		4" SDR 35 10+05.3	4" SDR 35 10+72.3	97-5151-7		114 S. Breezy Pt		3-18-97	
10+00	137.60	127.32	10.3			4" SDR 35 10+72.3	4" SDR 35 10+72.3	96-6297-7		110 S. Breezy Pt		4-26-96	
11+00	137.90	127.72	10.2			4" SDR 35 11+78.2	4" SDR 35 11+78.2	93-3004-7		106 S. Breezy Pt		11-30-93	
12+00	138.40	128.12	10.3			4" SDR 35 12+66.8	4" SDR 35 12+66.8	94-14934-7		102 S. Breezy Pt		9-14-94	
	138.50	128.19 OUT 128.29 IN	10.3	12+17.2		4" SDR 35 12+84.8	4" SDR 35 12+84.8	94-6418-7		101 S. Breezy Pt		4-29-94	
Private Sanitary Sewer Extension To Serve 156 N. Socora													
0+00	142.59	135.33 OUT 136.01 IN	7.3	0+00		4" PVC 40 0+73 top wk		93-15474-7		156 S. Socora		6-15-93	
0+73	143.20	136.37	6.8										

94-3391-7 - 3-16-94 156 S Socora - line temp disconnected while
C.O. being repaired with MH. will reconnect to
MH stub - Misses Cont-

UNPLANNED
TRACT