

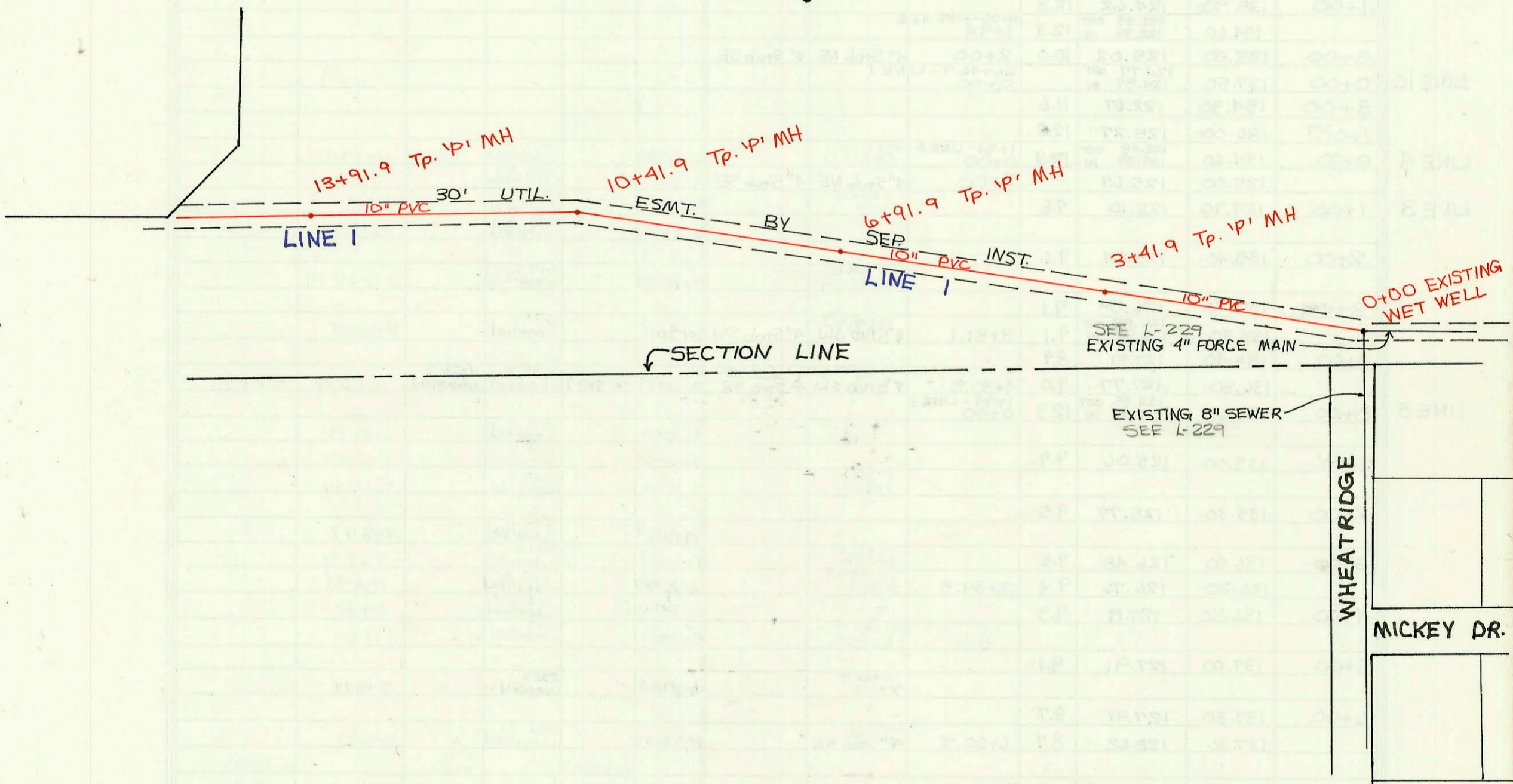
LATERAL 8, MAIN 1, COWSKIN INTERCEPTOR SEWER
PROJ. NO. 468-82103 (741058)
BUILT BY UTILITY CONTRACTORS CO.
BOOKED 7-15-93 AS PER PLAN



SCALE: 1" = 150'

MIP

UNPLATTED TRACT



CONSTRUCTION RECORD							SERVICE RECORD					
STATION	ELEVATION		Depth	MANHOLE	4-INCH "Y" BRANCHES		No. of Permit		House Number		DATE OF PERMITS	
	Ground	Grade			North West	South East	North West	South East	North West	South East	North West	South East
LINE 1	8, Main l. Cows Kin	1, Cows Kin		Interceptor Sewer								
0+00	132.00	122.60 OUT 116.81 IN	15.1									
1+00	127.80	117.01	10.8									
2+00	127.80	117.21	10.6									
3+00	126.90	117.41	9.5									
4+00	127.50 127.30	117.49 117.61	10.0 9.7	3+41.9								
5+00	127.70	117.81	9.4									
6+00	127.50 127.80	118.01 118.19	9.5 9.6	6+91.9								
7+00	127.50	118.20	9.3									
8+00	127.10	118.41	8.7									
9+00	127.90	118.61	9.3									
10+00	127.10 127.30	118.81 118.99 OUT 118.99 IN	8.3 8.4	10+41.9								
11+00	126.70	119.11	7.6									
12+00	126.50	119.31	7.2									
13+00	126.70 127.70	119.51 119.69	7.2 8.0	13+91.9								
14+00	127.40	119.70	7.7									
15+00	127.80 132.90	119.91 120.07 OUT 120.07 IN	7.9 12.8	0+00-LINE 2 15+81.9								
16+00	132.80	120.10	12.7		16+00-4" Riser N. 124.60 4" SDR 35 16+02.9 TAP		94-10216-7		12631 Hendryx		6-24-94	
17+00	132.80	120.31	12.5		4" SDR 35 17+14.9		94-908-7		12701 Hendryx		1-14-94	
18+00	132.80 132.90	120.50 120.52 OUT 120.62 IN	12.3 12.4	18+06.9	4" SDR 35 N/C 4" Stub NW 18+95-4" Riser W. 125.40 19+60-4" Riser W. 126.60 20+35-4" Riser W. 127.30	4" SDR 35 25'-4" Stub SW 18+85-4" Riser E. 125.40 19+75-4" Riser E. 127.10 20+45-4" Riser E. 127.20	95-1758-7 94-909-7 94-10207-7 94-10207-7 94-10207-7		618 S Wheatland 624 S Wheatland 627 S Wheatland 606 S Wheatland	622 S Wheatland 627 S Hendryx 624 S Hendryx 624 S Hendryx	2-7-95 6-24-94 7-7-94 6-24-94	1-14-94 11-6-94 8-18-94 7-28-94
19+00	134.10	120.90	13.2				94-10207-7		618 S Wheatland 624 S Wheatland 627 S Hendryx 606 S Wheatland	622 S Wheatland 627 S Hendryx 624 S Hendryx	2-7-95 6-24-94 7-7-94 6-24-94	1-14-94 11-6-94 8-18-94 7-28-94
20+00	135.40	121.20	14.2				94-10207-7		618 S Wheatland 624 S Wheatland 627 S Hendryx 606 S Wheatland	622 S Wheatland 627 S Hendryx 624 S Hendryx	2-7-95 6-24-94 7-7-94 6-24-94	1-14-94 11-6-94 8-18-94 7-28-94
21+00	135.00 134.50	121.50 121.67 OUT 122.70 IN	13.5 12.8	0+00-LINE 3 21+56.4	4" stub SW 4" SDR 35	4" stub SE 4" SDR 35	94-10211-7	94-7422-7	602 S Wheatland 12711 Hendryx	12711 Hendryx	6-24-94	5-8-97
22+00	133.80	122.87	10.9		4" SDR 35 22+50.4 4" SDR 35 23+18.3		94-7422-7		522 S Wheatland 528 S Wheatland 524 S Wheatland		11-5-93	
23+00	135.10 135.35	123.27 123.45 OUT 123.55 IN	11.8 11.9	0+00-LINE 1B 23+42.9	4" SDR 35 23+85-4" Riser W. 127.70		94-3191-7		522 S Wheatland 528 S Wheatland 524 S Wheatland		3-9-94	
24+00	135.80	123.78	12.0				94-12161-7		522 S Wheatland 528 S Wheatland 524 S Wheatland		9-11-97	
25+00	136.60	124.18	12.4		24+50-4" Riser W. 128.00 25+20-4" Riser W. 128.30 26+80-4" Riser W. 129.00	4" SDR 35 24+59.9	94-5927-7 94-18806-7 94-2820-7	94-399-7	520 S Wheatland 516 S Wheatland 512 S Wheatland	519 S Firefly	4-21-94 11-7-94 2-28-94	3-9-94
26+00	137.30 137.50 137.00	124.58 124.77 OUT 124.87 IN 126.35	12.7 12.7 10.7	0+00-LINE 1C 26+46.9	4" SDR 35 26+80.4 4" SDR 35		94-20551-7 93-19877-7		508 Wheatland 504 Wheatland		12-15-94 7-19-93	
LINE 1B	0+00	135.35	124.22 IN	11.9	23+42.9-LINE 1 0+00	4" stub NW 0+18.0		93-28787-7	12722 Hendryx		11-5-93	
1+00	135.90	124.62	11.3		4" SDR 35 1+40.0	4" SDR 35 1+12 4" SDR 35 1+80.0	93-28791-7 93-3342-7	94-1369-7	523 S Firefly 12714 Hendryx 521 S Firefly	12718 Hendryx 12714 Hendryx 531 S Firefly	11-5-93 1-27-94 12-22-93	
LINE 1C	0+00	137.50	124.87 IN	12.3	26+46.9-LINE 1 0+00	4" stub NE 4" SDR 35 4" SDR 35 0+48.0	94-3192-7 93-12534-7 93-22878-7	93-2343-7	521 S Firefly 12713 W T&T 12704 W T&T	515 S Firefly	3-9-94 5-17-93	12-22-93 8-24-93
1+00	136.00	125.27	10.7		87.0 tap 4" SDR 35 1+46.4 tap		93-12528-7 93-12526-7		12705 W T&T		5-17-93	
2+00	135.60	125.67	9.3	2+00	4" SDR 35 1+18.0	4" SDR 35 4" SDR 35	93-26307-7		511 S Firefly		10-6-93	
LINE 2	0+00	132.90	121.25 IN	12.8	15+81.9-LINE 1 0+00	4" stub NE 4" stub SE	94-10205-7	74-907-7	12701 W. T&T 507 Firefly		6-24-94	1-14-94
1+00	132.80	121.65	11.2		4" SDR 35 1+03.9		93-28789-7		12631 W Hendryx 12623 Hendryx		11-5-93	
2+00	132.90	121.75 OUT 121.85 IN	11.2	1+25.9	4" SDR 35 2+17.9		94-7340-7		12631 Hendryx		8-18-94	
2+00	132.80	122.15	10.7		4" SDR 35 2+92.1		94-7263-7		12631 Hendryx		7-28-94	

* Continued on Page N-66
Form #192-020 (July, 1981)