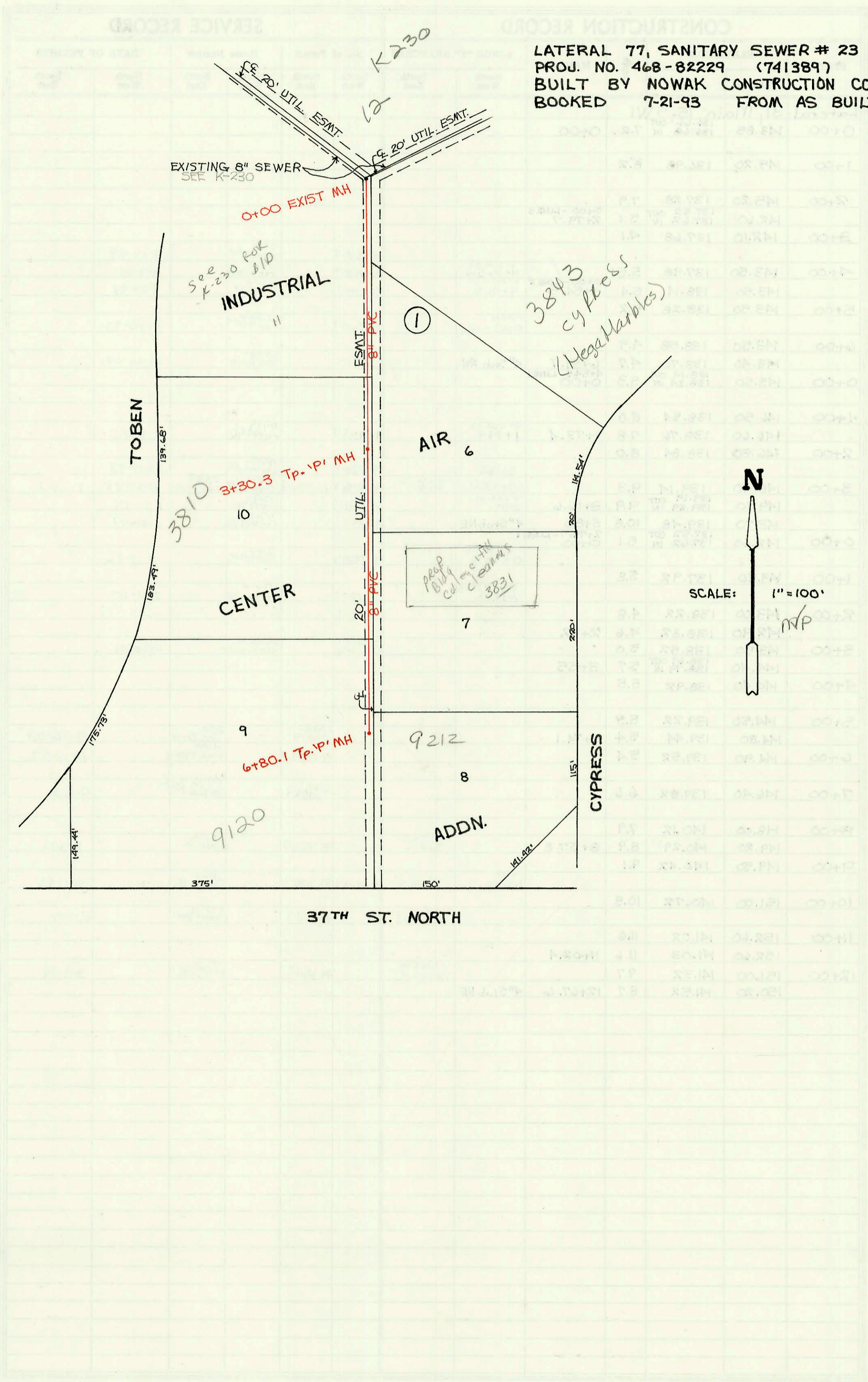


LATERAL 77, SANITARY SEWER # 23
PROJ. NO. 468-82229 (741389)
BUILT BY NOWAK CONSTRUCTION CO.
BOOKED 7-21-93 FROM AS BUILTS



CONSTRUCTION RECORD						SERVICE RECORD						
STATION	ELEVATION		Depth	MANHOLE	4-INCH "Y" BRANCHES		No. of Permit		House Number		DATE OF PERMITS	
	Ground	Grade			North West	South East	North West	South East	North West	South East	North West	South East
Lateral	77, S. 5.	# 23										
0+00	233.80	212.78 OUT 220.50 IN	21.0	0+00								
1+00	234.10	221.30	12.8			4" SCH 40 PVC 0+69 Saddle	2001 01176		3843 Cypress			5-14-01
2+00	234.70	222.04	12.7									
3+00	235.40	222.78	12.6									
	235.66	223.01 OUT 223.22 IN	12.7	3+30.3								
4+00	235.80	223.71	12.1		4" SCH 40 2+97.9 tap		93-23654-7		3810 N Toben			9-3-93
5+00	236.30	224.42	11.6			4" SCH 40 PVC 4+97.1 Saddle	2001 00569		3831 Cypress			3-5-01
6+00	236.70	225.13	11.6		6+102.1 tap		93-15221-7		9120 E 3752 N			
	237.25	225.70	11.6	6+80.1		4" SCH 40 6+76.1	97-47477		9212 F 3774 S+W			3-28-97
Lateral	20, Main 1, Cowskin	Interceptor Sewer										
2+00	158.80	149.30	9.5		4" SDR 35 2+130 tap NW		93-12442-7		12021 W Meribeauc			7-13-93
	159.60	149.65 OUT 149.75 IN	10.0	2+88								
3+00	159.60	149.79	9.8									
4+00	159.60	150.20	9.4									
5+00	159.70	150.60	9.1		4" sch 40 4+73.0 4" SDR 35 5+24.0		96-23327-7 98-10544-7		12017 Meribeauc 12015 Meribeauc			8-14-96 1-18-94
6+00	159.70	151.00	8.7	5+83								
7+00	159.50	151.40	8.1		4" SDR 35 6+51.9 4" sch 40 PVC 7+28.9 SDR 35		94-11497-7 94-11435-7		12009 CT Meribeauc 12005 CT Meribeauc			7-20-94 7-6-94
0+00	159.50	151.61	7.9	7+51.5	4" Stub NW		94-64127		12001 Meribeauc			4-29-94
0+00	155.20	142.90 OUT 144.90 IN	12.3	0+00								
1+00	155.30	145.93	9.4		4" SDR 35 1+11		94-14067		12016 Meribeauc			8-29-94
2+00	156.40	146.95	9.5		4" SDR 35 2+02.5	4" SDR 35 2+82.5	94-99-00539 96-15430-7	94-14274-7	12114 JAYSON 12110 JAYSON	12030 W Meribeauc		8-30-99 9-2-94 9-2-94
3+00	157.50	147.98	9.5		4" SDR 35 3+04.9	4" sch 40 2+26.5	96-9777-7	95-1185-7	12106 JAYSON	12034 Meribeauc		1-25-96 1-24-95
	158.10	148.50	9.6	3+50.5	4" Stub SW	4" Stub SE	95-15122-7	94-6409-7	12102 JAYSON	12038 Meribeauc		9-18-95 4-29-94
0+00	161.40	148.08 OUT 150.00 IN	13.3	0+00		4" SDR 35 0+28.0	94-9331-7		12018 Meribeauc			6-10-94
1+00	160.90	150.40	10.5									
	160.80	150.44 OUT 150.54 IN	10.4	1+09.6								
2+00	160.80	150.90	9.9									
3+00	160.70	151.30	9.4		4" SDR 35 2+59.6 4" SDR 35 3+48.9		94-1711-7 94-10124-7		12014 CT Meribeauc 12010 Meribeauc			7-20-94 7-1-94
4+00	160.60	151.70	8.9		4" SDR 35 4+25.5		96-0787-7		12056 Meribeauc			1-25-96
	160.60	151.95	8.7	4+62.5	4" SDR 35 4" Stub SW		96-9209-7		12002 W Meribeauc			6-11-96

LINE 3A
(Cont'd.)

LINE 4

LINE 5

* (Continued from Page N-69)