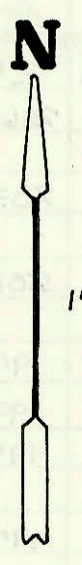
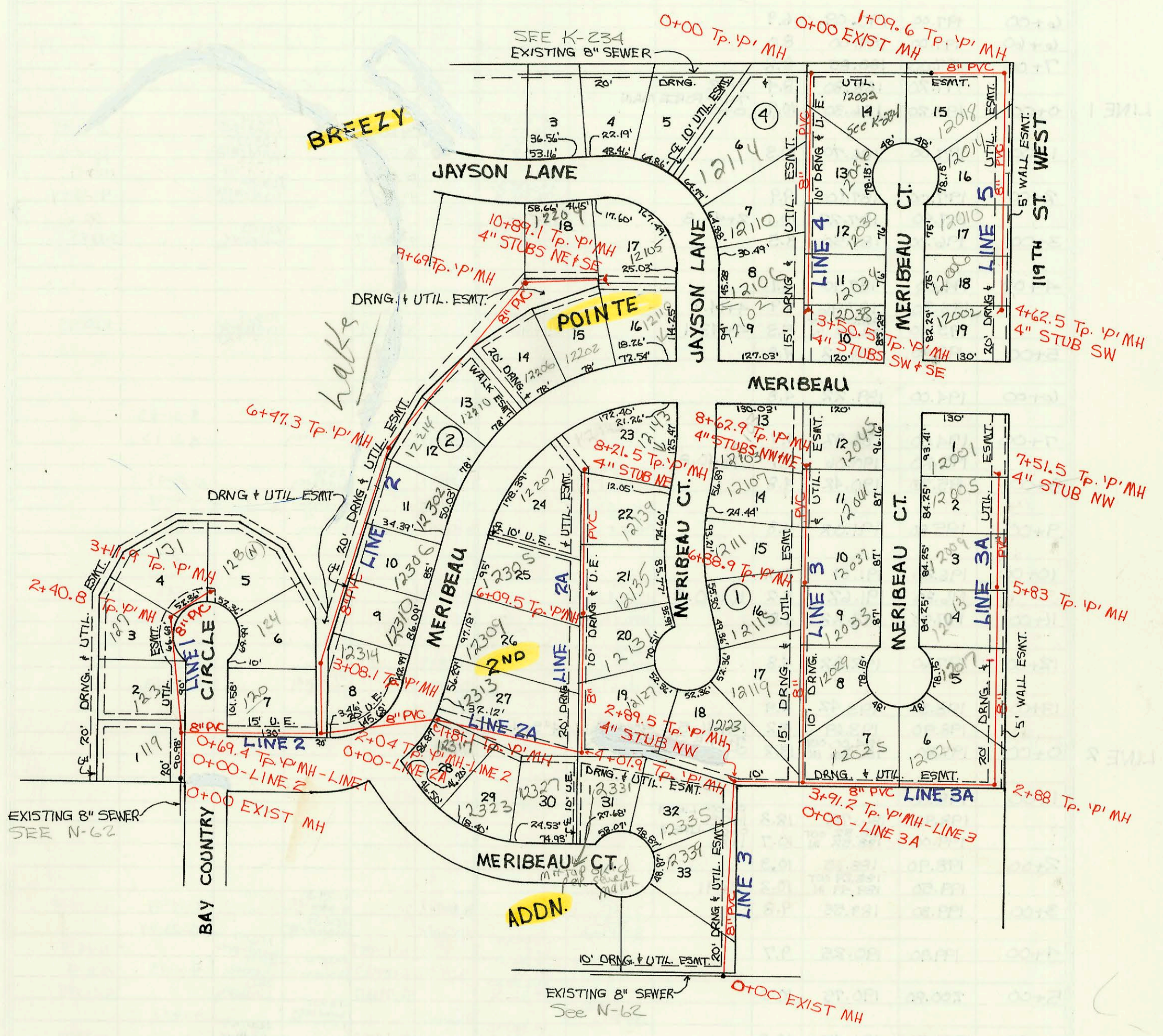


LATERAL 20, MAIN 1, COWSKIN INTERCEPTOR SEWER
PROJ. NO. 468-82263 (741348)
BUILT BY UTILITY CONTRACTORS CO.
BOOKED 7-23-93 AS PER PLAN



SCALE: 1" = 150'



CONSTRUCTION RECORD						SERVICE RECORD						
STATION	ELEVATION		Depth	MANHOLE	4-INCH "Y" BRANCHES		No. of Permit		House Number		DATE OF PERMITS	
	Ground	Grade			North West	South East	North West	South East	North West	South East	North West	South East
Lateral 20, Main L. Cowskin Interceptor Sewer												
LINE 1	0+00	141.40	130.65 OUT 130.65 IN	10.8	0+00	4" sch 40 PVC 0+65.4		74-18236-7		119 N Bay County		10-19-94
		141.60	131.03 OUT 132.20 IN	10.6	0+00-LINE 2 0+69.4							
	1+00	140.90	132.44	8.5		4" sch 40 1+44.2 4" sch 40 1+92.2		74-12708-7 77-8469-7		123 N Bay County 127 N Bay County		8-9-94 6-12-97
	2+00	147.80	133.24	9.6								
		143.50	133.57 OUT 133.67 IN	9.9	2+40.8							
LINE 2	3+00	143.90	134.24	9.7	3+11.9	4" stub NE		97-20114-7		131 N Bay County		11-11-97
	0+00	141.60	131.03 OUT 131.13 IN	10.6	0+64.9-LINE 1 0+00			97-20116-7		128 N Bay County		11-11-97
	1+00	142.00	131.53	10.5								
	2+00	144.70	131.93 131.95 OUT 132.05 IN	12.8	0+00-LINE 2A 2+04	4" sch 40 1+38.0	4" sch 40 2+24.0	97-10634-7 96-9219-7		120 N Bay County 12314 Meribea		9-9-99 6-11-96
	3+00	143.40	132.43 132.47 OUT 132.57 IN	11.0				97-1288-7		124 N Bay County		4-2-99
	4+00	142.60	132.94	9.7	3+08.1	4" sch 40 1+23.1 4" sch 40 5+12.7		96-6417-7 96-19961-7		12310 W Meribea 12305 W Meribea		5-1-96 12-2-96
	5+00	142.60	133.34	9.3								
	6+00	142.60	133.74 133.93 OUT 134.03 IN	8.9				95-5124-7		12302 W Meribea		4-10-95
		142.60	134.03	8.7	6+47.3			95-3836-7		12214 Meribea		3-23-95
	7+00	142.60	134.24	8.4								
	8+00	142.70	134.64	8.1				95-8837-7		12210 Meribea		6-14-95
	9+00	142.70	135.04 135.32 OUT 137.32 IN	7.7				96-3258-7		12206 Meribea		3-11-96
		142.80	137.32	7.5	9+69							
	10+00	143.60	137.93	5.7		4" sch 40 11+5.7	4" sch 40 10+29.6	95-6747-7 94-2910-7		12209 Jayson 12108 W Jayson		5-10-95 7-25-94
LINE 2A	0+00	144.70	133.95 OUT 133.95 IN	12.8	2+04-LINE 2 0+00	4" stub NE	4" stub SE	96-9228-7 94-1956-7		12108 W Jayson 12110 Meribea		6-11-96 7-25-94
	1+00	145.70	135.43 136.63 OUT 136.73 IN	10.3								
		147.10	136.73	10.4	1+81.1							
	2+00	141.10	137.00	10.1				94-4751-7		12313 Meribea		3-29-94
		141.10	137.00	10.1				94-4754-7		12313 Meribea		3-29-94
	3+00	146.70	138.40	8.3				94-6444-7		12323 Meribea		4-29-94
	4+00	146.40	139.79 139.82 OUT 139.92 IN	6.6	4+01.9			95-5121-7		12327 Meribea		6-6-95
	5+00	148.00	140.31	7.7				93-2725-7		12309 Meribea		4-10-95
	6+00	149.10	140.71 140.82 OUT 140.92 IN	8.4				93-30575-7		12131 Meribea		12-7-93
		149.10	140.75	8.4	6+09.5			93-30572-7		12305 Meribea		2-7-93
	7+00	149.20	141.11 141.11 OUT 141.11 IN	8.1				93-22345-7		12135 W Meribea		8-16-93
		149.20	141.11	8.1				94-3240-7		12207 Meribea		3-8-94
LINE 3	8+00	149.30	141.51	7.8								
	0+00	149.00	137.53 OUT 139.53 IN	11.5	8+21.5 0+00			93-31409-7		12143 Meribea		12-22-93
	1+00	150.40	141.28	9.1				95-16658-7		12359 Meribea		11-17-95
	2+00	152.50	143.03 144.60 OUT 144.70 IN	9.5				96-9946-7		12335 Meribea		6-14-96
		154.00	144.70	9.4	2+89.5			94-13340-7		12123 C.T. Meribea		8-22-94
	3+00	154.30	144.88 146.50 OUT 146.60 IN	9.4								
	4+00	156.80	146.60	10.0	0+00-LINE 3A 3+91.2							
	5+00	157.30	147.31	10.0				93-1848-7		12029 Meribea		7-14-93
	6+00	158.30	147.96 148.54 OUT 148.64 IN	10.3				93-30556-7		12119 Meribea		12-7-93
		158.90	148.54	10.4	6+88.9			94-4753-7		12115 Meribea		3-29-94
	7+00	159.20	148.61 148.61 OUT 148.61 IN	10.6				93-29369-7		12110 W Meribea		11-12-93
	8+00	158.70	149.26 149.26 OUT 149.26 IN	9.4				94-10567-7		12107 Meribea		1-18-94
LINE 3A	0+00	156.80	148.50 OUT 148.50 IN	10.3	3+91.2-LINE 3 0+00			95-1552-7		12105 Meribea		5-5-95
	1+00	157.70	148.90	8.8				93-24586-7		12105 W Meribea		9-17-93

* Continued on Page N-67