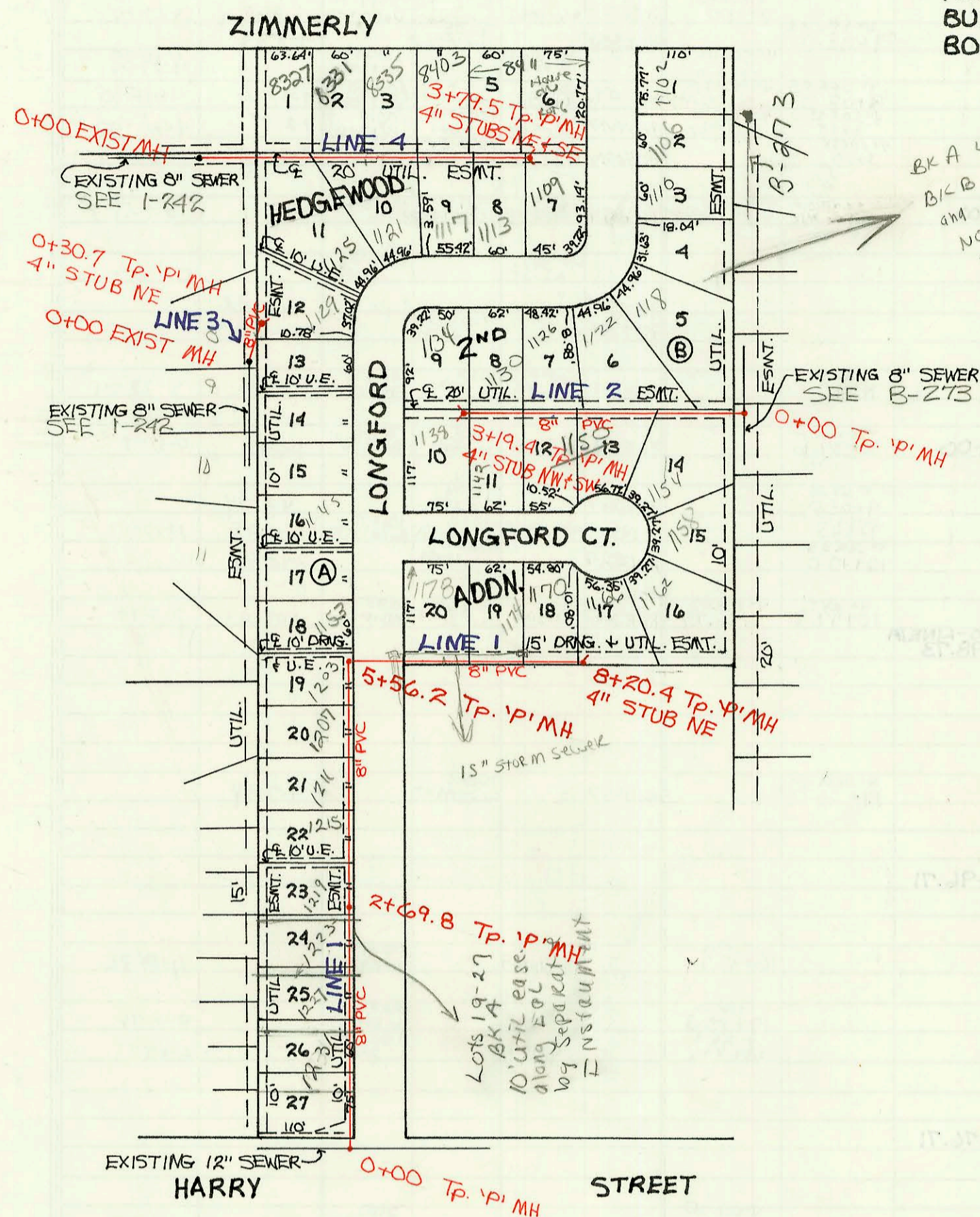
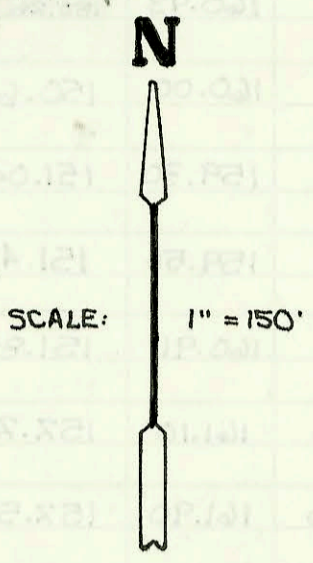


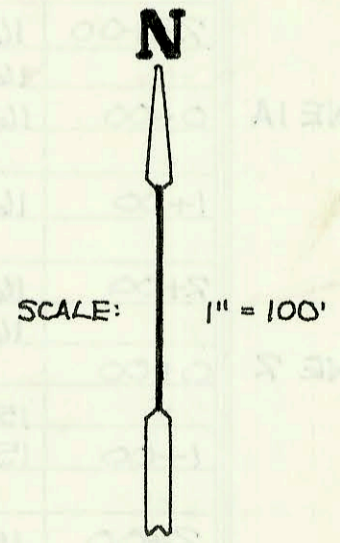
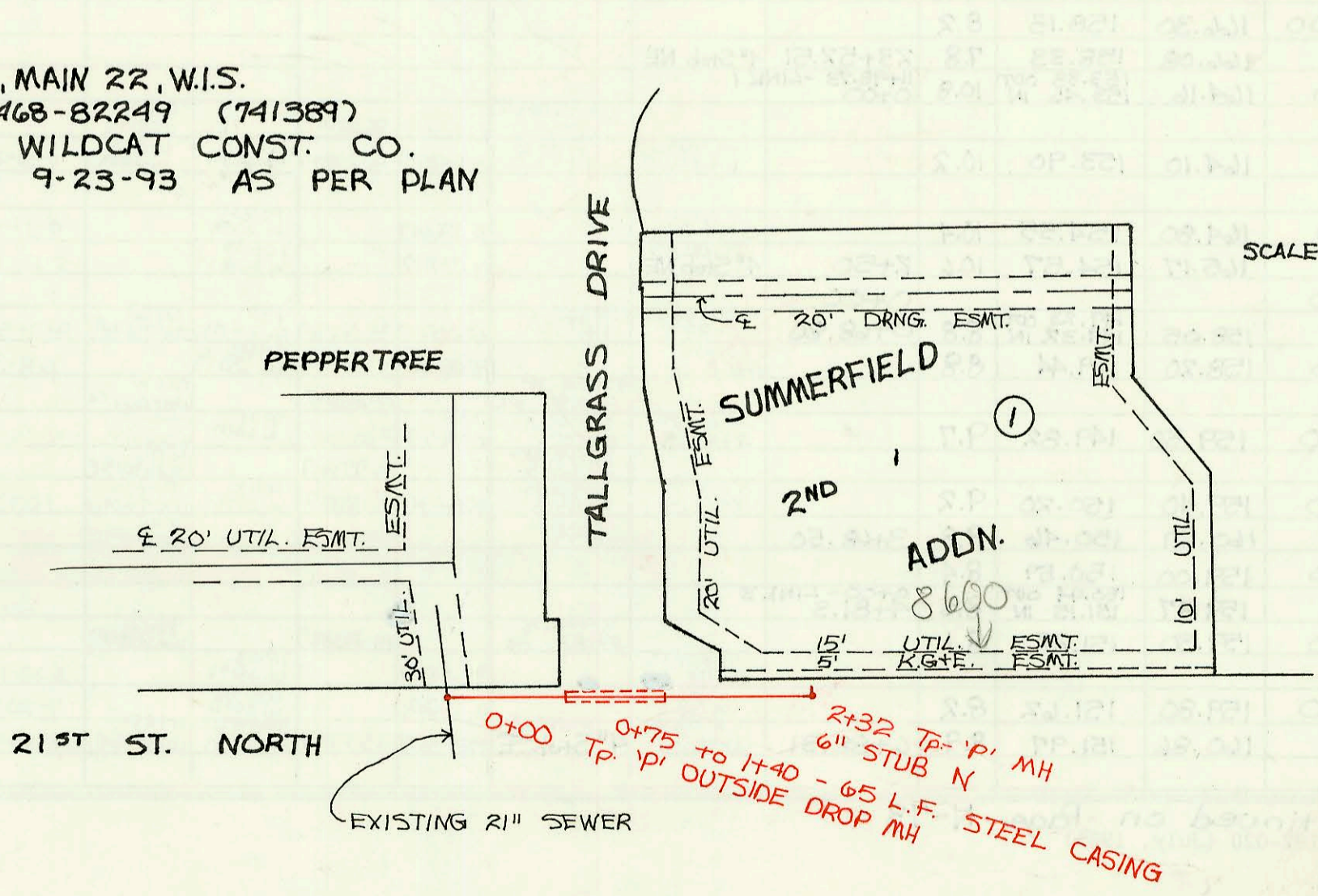
LATERAL 116, WAR INDUSTRIES SEWER
 PROJ. NO. 468-82261 (741470)
 BUILT BY MIES CONSTRUCTION CO.
 BOOKED 9-7-93 FROM AS BUILTS



BKA lots 13-18
 BKB lots 1-4
 and 15-16
 NO FURTHER ASSES. fees assessed - refer
 Dec. already assessed county computer
 records.
 (11-12-93)
 BR



LATERAL 61, MAIN 22, W.I.S.
 PROJ. NO. 468-82249 (741389)
 BUILT BY WILDCAT CONST. CO.
 BOOKED 9-23-93 AS PER PLAN



CONSTRUCTION RECORD							SERVICE RECORD					
STATION	ELEVATION		Depth	MANHOLE	4-INCH "Y" BRANCHES		No. of Permit		House Number		DATE OF PERMITS	
	Ground	Grade			North West	South East	North West	South East	North West	South East	North West	South East
Lateral 116, War Industries Sewer												
LINE 1 0+00	158.15	149.92 OUT 150.25 IN	8.2	0+00	4" PVC 40 0+80.0		97-2404-7		1229 Longford			2-14-97
1+00	158.70	150.66	7.5				94-12357-7		1231 Longford			8-3-94
2+00	158.90	151.07	7.8		4" SDR 35 2+25.3		94-4748-7		1223 Longford			3-29-94
3+00	159.80	151.46	8.3	2+69.8	4" sch 40 PVC 2+76.0 tap 4" sch 40 PVC 3+30.8		96-6580-7		1219 Longford			5-2-96
4+00	160.90	151.81	9.1		4" SDR 35 4+92.8 216 4" SDR 35 4+97.2 4" SDR 35 5+18.7		95-837-7		1211 Longford			1-23-95
5+00	162.00	152.15	9.9				94-15893-7		1207 Longford			9-30-94
6+00	162.30	152.34 OUT 152.56 IN	10.0	5+56.2			93-29087-7		1203 Longford			11-12-93
7+00	161.00	152.75	8.3		4" sch 40 6+66.2 4" sch 40 7+28.4 4" SDR 35 7+94.4		92-8465-7		1175 Longford			5-28-97
8+00	160.80	153.17	7.6				91-14355-7		1174 S Longford			9-7-94
9+00	161.30	153.59	7.7				92-30475-7		1170 S Longford			12-7-93
Lateral 116, Longford												
LINE 2 0+00	161.03	153.68	7.4	8+20.4	4" Stub NE		97-5091-7		1166 Longford			3-18-97
1+00	164.90	154.96 OUT 155.38 IN	9.9	0+00								
2+00	165.10	155.70	9.4		4" sch 40 1+25.4		98-13123-7		1118 Longford			7-14-98
3+00	165.00	156.10	8.9		4" sch 40 2+16.4 4" P.V.C 45 2+92.4	4" sch 40 PVC 2+19.4 tap 4" SDR 35 2+98.4	95-17090-7	96-6827-7	1126 Longford	1150 Longford		5-15-95 5-2-96
4+00	165.00	156.50	8.5				94-15894-7	96-17267-7	1130 Longford	1142 Longford		9-30-94 10-9-96
5+00	167.03	156.57	10.5	3+19.4	4" sch 40 4" Stub NW	4" sch 40 4" Stub SW	0051-0518	94-14354-7	1134 Longford	1138 S Longford		6-20-01 9-7-94
LINE 3 0+00	168.64	157.46 OUT 158.34 IN	11.2	0+00								
1+00	168.66	158.70	10.0	0+30.7	4" SDR 35 4" Stub NE			96-4422-7	1129 S Longford			8-14-96
LINE 4 0+00	167.71	158.83 OUT 159.35 IN	8.9	0+00								
1+00	168.40	159.77	8.6		4" sch 40 1+05.0 4" SDR 35 1+87.5		2201-02033	95-9665-7 95-838-7	8227 E Zimmerly	1125 P Longford	see below	6-28-95 11-28-01 1-23-95
2+00	169.00	160.19	8.8				94-18076-7	96-11034-7	8331 Zimmerly	1121 Longford		11-7-94 9-2-97
3+00	168.60	160.61	8.0		4" SDR 35 2+59.5 4" SDR 35 3+24.0		97-15623-7	97-16960-7	8335 Zimmerly	1117 Longford		9-26-97 12-14-98
4+00	169.09	160.94	8.2	3+79.5	4" Stub NE	4" Stub SE	2055-0230	97-19844-7	8411 Zimmerly	1113 S Longford		12-14-93
5+00												
Lateral 61, Main 22, WIS												
0+00	194.00	173.50 OUT 182.07 IN	20.5	0+00								
1+00	193.00	182.47	10.5									
2+00	192.30	182.87	9.4									
3+00	191.50	183.00	8.5	2+32	6" SDR 35 6" Stub N				8600 E 21st			6-25-98
4+00									8600 E 21st			8-17-93
Lateral 103, Westlink Sanitary Sewer (Continued from Page N-74)												
LINE 3 0+00	159.47	150.94 OUT 151.11 IN	8.5	4+81.33 LINE 2 0+00	4" SDR 35 0+22.0	4" SDR 25 0+25.0	95-48687-7	96-7926-7	10009 w 20th	10005 w 20th		2-30-95 5-22-96
1+00	160.90	151.49	9.4									
2+00	160.60	151.88	9.0									
3+00	160.70	152.26	8.4									
4+00	160.61	152.31 OUT 152.45 IN	8.3	0+00 - LINE 4 3+11.95								
5+00	160.70	152.83	7.8		4" sch 40 4+63.71			2600 01525		10021 w 21st		6-28-00
6+00	160.30	153.16 OUT 153.32 IN	7.1	4+74.71								
7+00	160.00	153.42	6.6		4" sch 40 5+46.71		99-01133		10051 w 21st			11-8-99
8+00	160.50	153.83	6.7		4" sch 40 6+21.1		95-9557-7		10111 w 21st			6-20-95
9+00	161.29	153.99	7.3	6+39.71	4" Stub NW							
LINE 4 0+00	160.61	152.31 OUT 152.46 IN	8.3	0+00		4" SDR 35 0+65.0		96-17789-7		10008 w 20th		10-21-96
1+00	161.50	152.86	8.6									
2+00	162.40	153.25	9.2		4" SDR 35 1+55.0 4" SDR 35 2+24.2		94-10260-7		10012 w 20th			6-24-94
3+00	163.40	153.65	9.8		4" SDR 35 3+20.8 4" SDR 35 3+24.8		95-20537-7		10016 w 20th			3-9-95
4+00	164.04	153.81 OUT 153.97 IN	10.2	3+39.88			96-3627-7		10020 w 20th			3-14-96
5+00	164.30	154.21	10.1		4" SDR 35 4+08.8 4" SDR 35 4+66.0		95-8222-7		10102 w 20th			8-31-95
6+00	165.20	154.60	10.6		4" SDR 35 5+26.0		96-817-7		10110 w 20th			6-6-95 1-24-96
7+00	166.31	155.11 OUT 155.25 IN	11.2	6+30.03			96-2333-7		10114 w 20th			2-22-96
8+00	165.82	155.53	10.3	6+94.07	8" Stub NW	4" Stub W						
9+00					4" SDR 35 6+17.0 4" SDR 35 6+55.0		96-8122-7		10202 w 20th			5-8-96
10+00					4" SDR 35 6+55.0		96-8057-7		10206 w 20th			5-31-96
11+00					4" SDR 35 6+94.07		96-4182-7		10210 w 20th			3-28-96

95-9665-7 6-28-95 425 S Longford - 7100 Garage into house Line