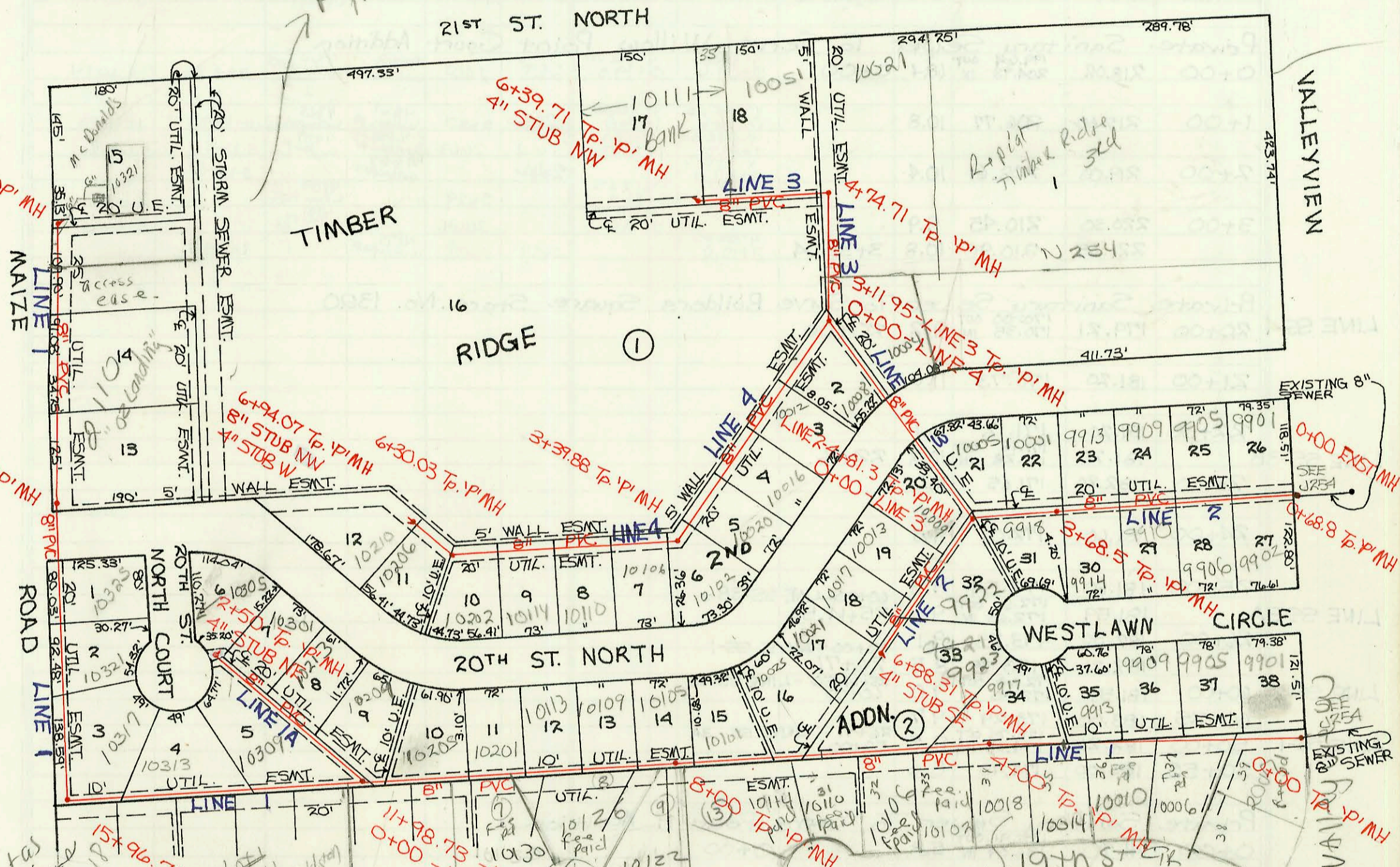
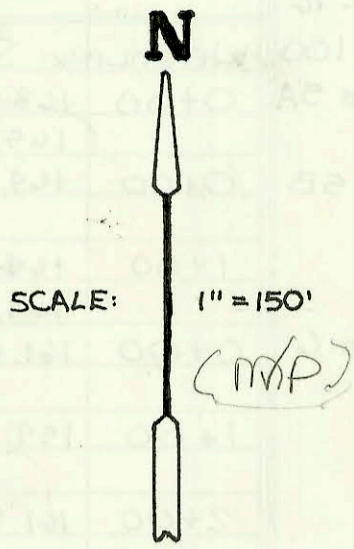


LATERAL 103, WESTLINK SANITARY SEWER
 PROJ. NO. 468-82240 (741371)
 BUILT BY UTILITY CONTRACTORS
 BOOKED 10-14-93 FROM AS BUILTS



Redatas
 2nd add 2018
 owes fee in lieu
 of asses in amt
 of \$3,325.80
 per G. Rath
 7/18/97

Lot 2
 Sep 11-234 for
 \$10.
 Lots 7, 8, 9, 13
 owe fee in
 lieu of
 \$1,108.60
 per G. Rath
 7/18/97

Fee in lieu of Lateral
 sewer assess. in Amt of
 1,108.60 for Lots 30-37
 per City Engineer 7-17-96
 This fee must be paid
 per Lot prior to connection
 to Sewer - pd 2/7/01

Be sure to
 collect
 fee before
 issuing
 permit

Fee in Lieu of Lateral Assess.

8-19-96	2007 N. Valleyview	paid \$1,108.60
10-8-97	10126 W Bella Vista Ct	paid \$1,108.60
10-8-97	10102 W 19th St	paid \$1,108.60
2-11-99	10122 W Bella Vista	paid \$1,108.60
12-22-99	10006 W 19th St	paid \$1,108.60
12-22-99	10010 W 19th St	paid \$1,108.60
12-22-99	10130 W Bella Vista	paid \$1,108.60
4-20-00	10014 W 19th St	paid \$1,108.60
11-29-01	10114 W 19th St	paid \$1,108.60
10-13-02	10106 W 19th St	paid \$1,108.60
11-13-05	10110 W 19th St	paid \$1,108.60

2018 N Maize pd
 pd \$3,325.80 on 7/23/04

CONSTRUCTION RECORD						SERVICE RECORD						
STATION	ELEVATION		Depth	MANHOLE	4-INCH "Y" BRANCHES		No. of Permit		House Number		DATE OF PERMITS	
	Ground	Grade			North West	South East	North West	South East	North West	South East	North West	South East
Lateral 103, Westlink Sanitary Sewer												
LINE 1 0+00	158.51	148.59 OUT 148.68 IN	9.9	0+00	4" SDR 35 0+17.0		94-420-7	96-143-7	9901 W Westlawn Ct		3-22-94	
1+00	159.00	149.07	9.9		4" SDR 35 1+03.0	4" SDR 35 0+73.0	93-238-7	96-143-7	9905 Westlawn	2001 W Valleyview	9-8-93	8-27-96
2+00	159.70	149.46	10.2		4" SDR 35 2+08.0	4" SCH 40 2+40.0	84-115-7	99-215-7 97-182-7	9909 W Westlawn	1000 W 19th	7-7-94	1-11-00
3+00	160.40	149.85	10.6		4" SDR 35 3+30	4" SCH 40 4+14.0	94-140-7	2000 00980	9915 W Ct Westlawn	10014 W 19th	9-2-94	4-20-00
4+00	160.93	150.24 OUT 150.26 IN	10.7	4+00		4" SCH 40 4+09 Saddle	94-160-7	97-178-7	9917 Ct Westlawn	10102 W 19th	9-30-94	10-16-97
5+00	160.00	150.65	9.4					2001- 00274		10018 W 19th		2-7-01
6+00	159.30	151.04	8.3					2002- 00793		10106 W 19th		0-11-02
7+00	159.50	151.43	8.1		4" SDR 35 7+24.0		98-591-7 97-178-7			10525 W 20th	4/16/98 10-2-97	
8+00	160.91	151.82	9.1	8+00	4" SDR 35 8+37.6		96-901-7	2001- 02142	10101 W 20th	10114 W 19th Cir	6-19-96	8-28-01
9+00	161.10	152.20	8.9		4" SDR 35 9+03.0		94-626-7		10104 W 20th		4-21-94	
10+00	161.90	152.58	9.3		4" SDR 35 10+10.0		95-145-7	97-178-7	10113 W 20th	10126 Bella Vista	9-12-95	10-10-97
11+00	161.70	152.96	8.7		4" SDR 35 10+19.7	4" SCH 40 11+56.73	94-133-7		10201 W 20th		8-18-94	
12+00	164.10	153.47	10.6				95-162-7	99- 01507	10205 W 20th	10330 W Bellavista	10-19-95	2-7-00
13+00	164.40	153.80	10.6									
14+00	164.30	154.13	10.2		4" SDR 35 14+23.0		94-114-7		10313 W 20th Ct		7-7-94	
15+00	163.60	154.46	9.1									
	163.07	154.78 OUT 155.11 IN	8.3	15+96.71								
16+00	163.10	155.13	8.0			4" SDR 35 16+90.7				10217 W 20th Ct		11-19-96
17+00	163.00	155.59	7.4			4" SDR 35 17+80.8		94-134-7		10321 W 20th Ct		8-18-94
18+00	163.00	156.05	6.9			4" SDR 35 18+49.7		95-98-7		10325 W 20th Ct		6-30-95
19+00	164.60	156.51	8.1									
	165.02	156.87	8.2	19+76.71								
20+00	164.70	156.96	7.7									
21+00	164.90	157.35	7.6			4" SDR 40 21+45.7		99-952-7		110 Matz Rd		6-12-97
22+00	165.10	157.74	7.4									
23+00	166.30	158.13	8.2									
	166.08	158.33	7.8	23+52.51	4" Stub NE							
LINE 1A 0+00	164.16	153.33 OUT 153.46 IN	10.8	11+98.73 - LINE 1 0+00								
1+00	164.10	153.90	10.2		4" SDR 35 1+29.0	4" SDR 35 1+39.0	95-685-7	95-208-7	10204 W 20th	10213 W 20th	4-10-96	5-5-95 12-4-95
2+00	164.80	154.35	10.4		4" SDR 35 2+17.0	4" SDR 35 2+39.0	96-126-7		10301 W 20th		7-31-96	
	165.17	154.57	10.6	2+50	4" Stub NE		94-133-7		10305 W 20th Ct		8-16-94	
LINE 2 0+00	158.05	149.23 OUT 149.32 IN	8.8	0+68.80	4" SDR 35 0+89.8	4" SDR 35 1+19.8	93-235-7	95-194-7	9901 W 20th	9902 Westlawn	9-7-93	11-27-95
1+00	158.20	149.44	8.8		4" SDR 35 1+65.8 top	4" SDR 35 1+79.8	94-000-7	94-203-7	9905 W 20th	9906 W Westlawn	1-3-94	12-15-94
2+00	159.50	149.82	9.7		4" SDR 35 2+35.5	4" SDR 35 2+67.5	95-152-7	94-174-7	9904 W 20th	9910 Westlawn	9-25-95	5-24-94
3+00	159.40	150.20	9.2		4" SCH 40 3+19.5	4" SDR 35 3+45.5	95-162-7	95-830-7	9913 W 20th	9914 W Westlawn	10-10-95	6-14-95
	160.29	150.46	9.8	3+68.50	4" SDR 35 3+97.5		94-110-7		9918 Westlawn		7-7-94	
4+00	159.00	150.59	8.4									
	159.47	150.94 OUT 151.15 IN	8.5	4+81.3								
5+00	159.30	151.22	8.1			4" SDR 35 5+75.1	94-205-7		9922 Westlawn			12-15-94
6+00	159.80	151.62	8.2		4" SDR 35 6+62.5	4" SDR 35 6+83.8	94-805-7	94-117-7	10013 W 20th	10014 W 20th	5-20-94	7-20-94
	160.86	151.97	8.9	6+88.31	4" Stub SE		95-196-7	95-978-7	10021 W 20th	9923 Westlawn	7-2-95	5-10-95

* Continued on Page N-73
Form #192-020 (July, 1981)