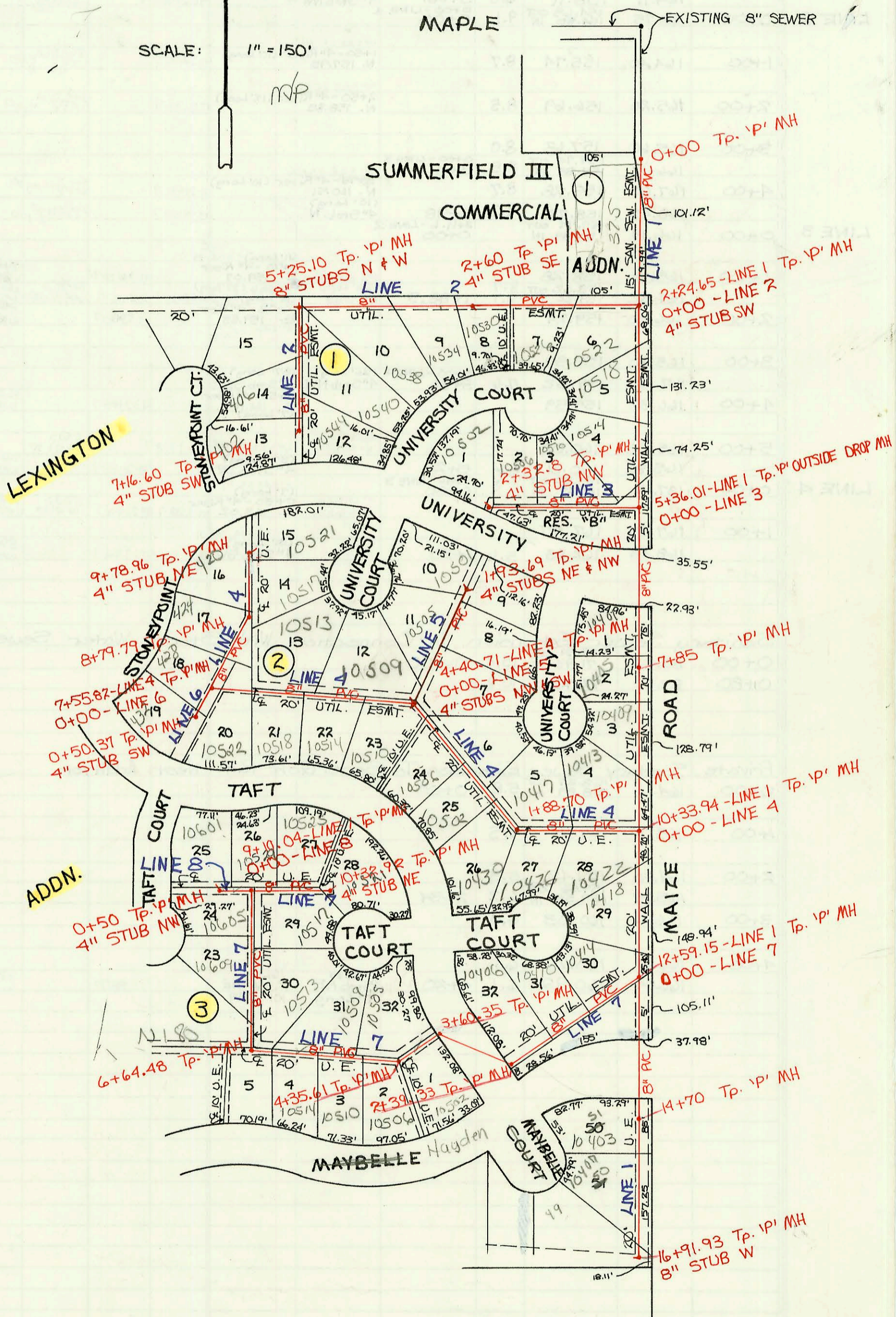


LATERAL 18, MAIN 1, COWSKIN INTERCEPTOR SEWER
PROJ. NO. 468-82259 (741363)
BUILT BY NOWAK CONSTRUCTION CO.
BOOKED 10-20-93 AS PER PLAN

N

SCALE: 1" = 150'



CONSTRUCTION RECORD							SERVICE RECORD					
STATION	ELEVATION		Depth	MANHOLE	4-INCH "Y" BRANCHES		No. of Permit		House Number		DATE OF PERMITS	
	Ground	Grade			North West	South East	North West	South East	North West	South East	North West	South East
Lateral 18, Main 1, Cowskin Interceptor Sewer												
LINE 1 0+00	135.50	120.94 IN	14.6	0+00								
1+00	134.90	121.34	13.6									
2+00	135.90	121.74	14.2									
	136.00	121.84	14.2	0+00 - LINE 2 2+24.65	2" 4" SDR 35 4" Stub SW		94-6390-7		10522 UNIVERSITY		4-29-94	4-21-94
3+00	136.70	122.14	14.6									
4+00	137.80	122.54	15.3		4" SDR 35 3+60 - 4" Riser W. 134.05 4+45 - 4" Riser W. 134.00		94-2047-7 94-2598-7		10518 UNIV. CT 10514 W. UNIV. CT		12-16-94	2-18-94
5+00	138.60	122.94	15.7									
	139.00	123.08	15.9	0+00 - LINE 3 5+36.01								
6+00	139.50	123.34	16.2									
7+00	139.70	123.74	15.5		7+35 - 4" Riser W. 131.50		94-6510-7		10401 W UNIVERSITY CT		4-17-97	
	139.00	124.08	14.9	7+85			96-3624-7					
8+00	138.90	124.14	14.8		8+00 - 4" Riser W. 131.80 8+85 - 4" Riser W. 132.00		96-3624-7 96-5088-7		10405 W. UNIV. 10409 UNIV. CT		3-14-96	4-10-95
9+00	138.60	124.54	14.1									
10+00	138.00	124.94	13.1									
	137.70	125.08	12.6	0+00 - LINE 4 10+33.94								
11+00	137.70	125.34	12.4		4" SDR 35 11+46.9		94-9264-7		10418 Taff ct		6-10-94	
12+00	137.10	125.74	11.4									
	136.20	125.98	10.2	0+00 - LINE 7 12+59.15								
13+00	136.60	126.14	10.5									
14+00	138.60	126.54	12.1									
	138.50	126.82	11.7	14+70			98-9643-7		10403 Hauden		6-5-98	
15+00	137.90	126.94	11.0				97-16008-7		10407 Hauden ct		9-26-97	
16+00	136.40	127.34	9.1									
	138.20	127.71	10.5	16+91.33	8" Stub W							
LINE 2 0+00	136.00	121.94 OUT 121.94 IN	14.2	0+00	2+24.65 - LINE 1 0+00	8" Stub W						
1+00	137.10	122.34	14.8									
						1+50 - 4" Riser S. 133.50	97-5088-7		10526 UNIVERSITY CT		3-18-97	
2+00	137.30	122.74	14.6									
	137.10	122.98	14.1	2+60		4" SDR 35 4" Stub SE	93-29682-7		10530 UNIVERSITY CT		11-12-93	
3+00	136.90	123.14	13.8									
						3+10 - 4" Riser S. 133.10	93-29686-7		10534 UNIV CT		11-12-93	
4+00	136.40	123.54	12.9									
						4+20 - 4" Riser S. 132.90	93-29689-7		10538 W. UNIV. CT		11-12-93	
5+00	137.20	123.94	13.3									
	137.40	124.04 OUT 126.04 IN	13.4	5+25.10	8" Stub N 8" Stub W							
6+00	138.10	127.20	10.9									
						4" SDR 35 6+54.6	97-1420-7	93-27041-7	406 S. STANLEY POINT	10640 UNIV. CT	12-19-95	11-12-93
7+00	139.20	128.75	10.5									
	139.20	129.00	10.2	7+16.60	4" SDR 35 4" Stub SW		95-20800-7	98-3072-7	400 S STANLEY POINT	10544 UNIV CT	12-19-95	2-19-98
LINE 3 0+00	139.00	123.08 OUT 130.07 IN	15.4 8.9	0+00	5+36.01 - LINE 1 0+00							
1+00	139.70	130.47	9.2									
						4" SDR 35 1+17.8 Top 4" SDR 35 1+69.8	94-2642-7 96-6570-7		10510 UNIVERSITY CT 10506 UNIVERSITY CT		2-18-94	4-8-95
2+00	140.50	130.87	9.6									
	140.07	131.00	9.1	2+32.8	4" Stub NW		97-16944-7		10502 UNIV CT		9-26-97	
LINE 4 0+00	137.70	125.08 OUT 127.08 IN	12.6	0+00	10+33.94 - LINE 4 0+00	4" SDR 35 0+39.5	95-737-7	94-20172-7	10413 UNIV CT	10422 W. TAFT	12-19-94	12-16-94
1+00	138.00	127.48	10.5									
	139.10	127.83 OUT 128.03 IN	11.3	1+88.70		4" SDR 35 1+48.2	95-5088-7	94-19716-7	10511 UNIV CT	10426 W. TAFT	4-10-95	10-26-94
2+00	139.10	128.08	11.0			4" SDR 35 2+24.7	95-5088-7	96-1962-7	10419 UNIV. CT	10439 W. TAFT	4-10-95	2-13-95
3+00	140.10	128.48	11.6			4" SDR 35 2+58.70	94-18662-7	93-19896-7	10502 W. TAFT	10421 W. UNIVERSITY CT.	11-16-94	7-23-93
4+00	141.00	128.88	12.1			4" SDR 35 3+77.7	95-7362-7		10506 TAFT		5-19-95	
	141.60	129.04 OUT 129.14 IN	12.6	0+00 - LINE 5 4+40.71	4" Stub NW 4" Stub SW	4" SDR 35 0+78	95-7362-7	95-7360-7	10510 TAFT		5-19-95	
5+00	142.00	129.38	12.6			4" SDR 35 5+08.7 Top	94-4741-7		10509 UNIV. CT		3-29-94	
						5+65 - 4" Riser S. 133.20	94-10121-7		10514 W. TAFT		7-1-94	
6+00	141.40	129.78	11.6			4" SDR 35 6+29.8	94-2596-7		10513 UNIV. CT		2-18-94	
						4" SDR 35 6+74.82	94-14201-7		10518 TAFT		9-2-94	

* Continue on Page N-79
 Form #192-020 (July, 1981)
 96-3624-7 3-14-96 10405 W UNIVERSITY - Riser at Sta. 7+97.0 4" SDR 35

