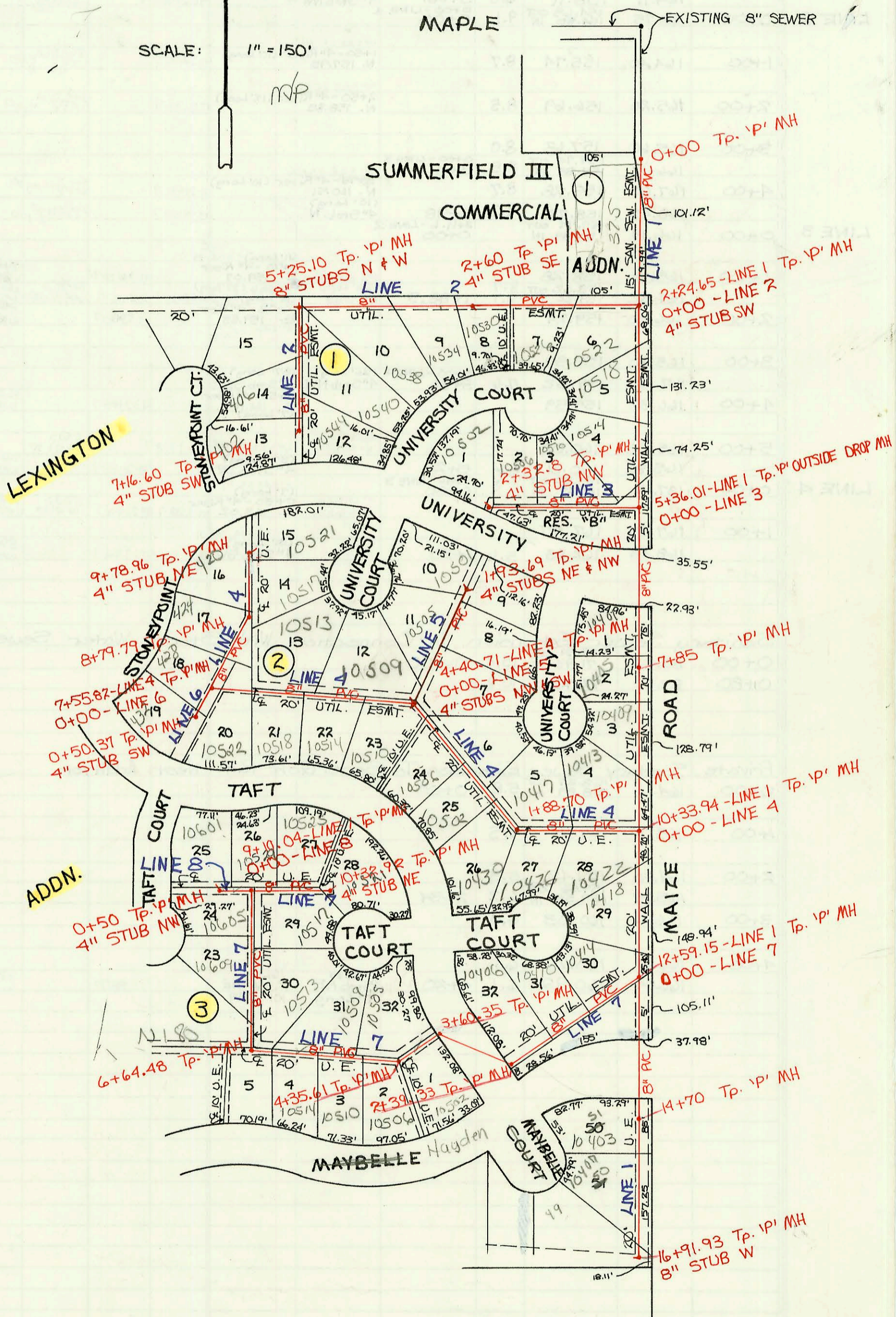


LATERAL 18, MAIN 1, COWSKIN INTERCEPTOR SEWER
PROJ. NO. 468-82259 (741363)
BUILT BY NOWAK CONSTRUCTION CO.
BOOKED 10-20-93 AS PER PLAN

N

SCALE: 1" = 150'



CONSTRUCTION RECORD						SERVICE RECORD						
STATION	ELEVATION		Depth	MANHOLE	4-INCH "Y" BRANCHES		No. of Permit		House Number		DATE OF PERMITS	
	Ground	Grade			North West	South East	North West	South East	North West	South East	North West	South East
Lateral 18, Main 1, Cowskin Interceptor Sewer (Continued From Page N-78)												
LINE 4 (Continued)	7+00	140.40	130.18	10.2		4" SDR 35 7+02.8		96-5067		10522 Taft		4-8-96
		139.90	130.40 OUT 130.60 IN	9.5	0+00-LINE 6 7+55.82					500 Below		
	8+00	140.10	130.68	9.4		4" SDR 35 8+60.2						
		140.09	131.00 OUT 131.10 IN	9.1	8+79.79		94-2613-7	94-8056-7	424 S. Stoney Point 420 Stoney Point	10517 4110 ct 10521		2-18-94 3-18-97 5-20-94
LINE 5	9+00	140.90	131.18	9.7		4" SDR 35 9+12.3		94-4570-7	94-6384-7	10521 w. Univ. ct 10425 w. University		4-29-94 7-23-93
	0+00	141.80	131.50	10.3	9+78.96 4+40.71-LINE 4 0+00	4" SDR 35 4" Stub NE 4" SDR 35 0+58		93-19892-7				
	1+00	141.60	129.04 OUT 130.23 IN	12.6		4" SDR 35 1+37.0		94-2602-7		10505 Univ. ct		2-18-94
		141.40	130.63	10.8		4" SDR 35 1+09 NIC 4" SDR 35 4" Stub NW		93-19892-7		10429 w. University 10435 w.		7-23-93
LINE 6	0+00	141.70	131.00	10.7	1+93.69	4" SDR 35 4" Stub NW		94-10422-7	93-19894-7	10501 w. Univ. ct		7-1-94 7-23-93
	0+00	139.90	130.40 OUT 130.80 IN	9.5	7+55.82-LINE 4 0+00	4" SDR 35 4" Stub NE						
LINE 7	0+00	139.80	131.00	8.8	0+50.37	4" SDR 35 4" Stub SW		94-14316-7		432 Stony Point		9-2-94
	0+00	135.40	125.98 OUT 127.98 IN	9.4	12+59.15-LINE 1 0+00	4" SDR 35 0+55		94-14253-7		10414 w. Taft		9-2-94
	1+00	136.60	128.38	8.2		4" SDR 35 1+49.0		95-4879-7		10410 w. Taft		3-22-95
	2+00	138.90	128.78	10.1		4" SDR 35 2+17.7		93-29051-7		10406 Taft		11-12-93
	3+00	140.30	128.94 OUT 129.04 IN	11.4	2+39.33							
	3+00	139.40	129.28	10.1		4" SDR 35 3+28.4		96-18481-7		10505 Taft		10-30-96
	4+00	140.10	129.52 OUT 129.62 IN	10.6	3+60.35							
	4+00	139.10	129.78	9.3		4" SDR 35 4+35.61		97-1150-7		10502 Hayden		1-24-97
	5+00	137.90	129.92 OUT 130.02 IN	8.0	4+35.61							
	5+00	138.50	130.02	8.2		4" SDR 35 5+55.6		95-5096-7	97-15655-7	10509 w. Taft ct	10506 Hayden	4-10-95 9-29-97
	6+00	139.50	130.94 OUT 131.04 IN	8.8		4" SDR 35 5+72.8		96-983-7	96-990-7	10509 w. Taft	10510 Hayden 10514 Hayden	4-10-95 1-25-96
	6+00	140.70	130.94 OUT 131.04 IN	9.3	6+64.48							
	7+00	140.40	131.18	9.2		4" SDR 35 7+22.4		94-16283-7		10513 w. Taft ct		10-3-94
	8+00	141.40	131.58	9.8		4" SDR 35 7+22.0		96-1982-7		10609 w. Taft		10-9-96
	9+00	141.40	131.58	9.8				93-9692-7		10605 Taft ct		6-5-98
	9+00	147.50	131.98	10.5	0+00-LINE 8 9+10.04	4" SDR 35 9+98.4		95-7361-7	97-16451-7	10525 w. Taft	10519 Taft	5-19-95 9-26-97
LINE 8	10+00	147.50	132.12 IN	10.5								
	10+00	139.50	132.48	7.0		4" SDR 35 10+32.92				10521 w. Taft		4-17-97
	0+00	143.40	132.61	10.8	9+10.04-LINE 7 0+00	4" SDR 35 4" Stub NE 4" SDR 35 0+11.0		97-16511-7		10529 w. Taft		4-19-96
	0+00	142.50	132.02 OUT 132.12 IN	10.5		4" SDR 35 4" Stub NW		96-6355-7				
		143.00	132.32	10.7	0+50			95-9962-7		10601 Taft		6-30-95