

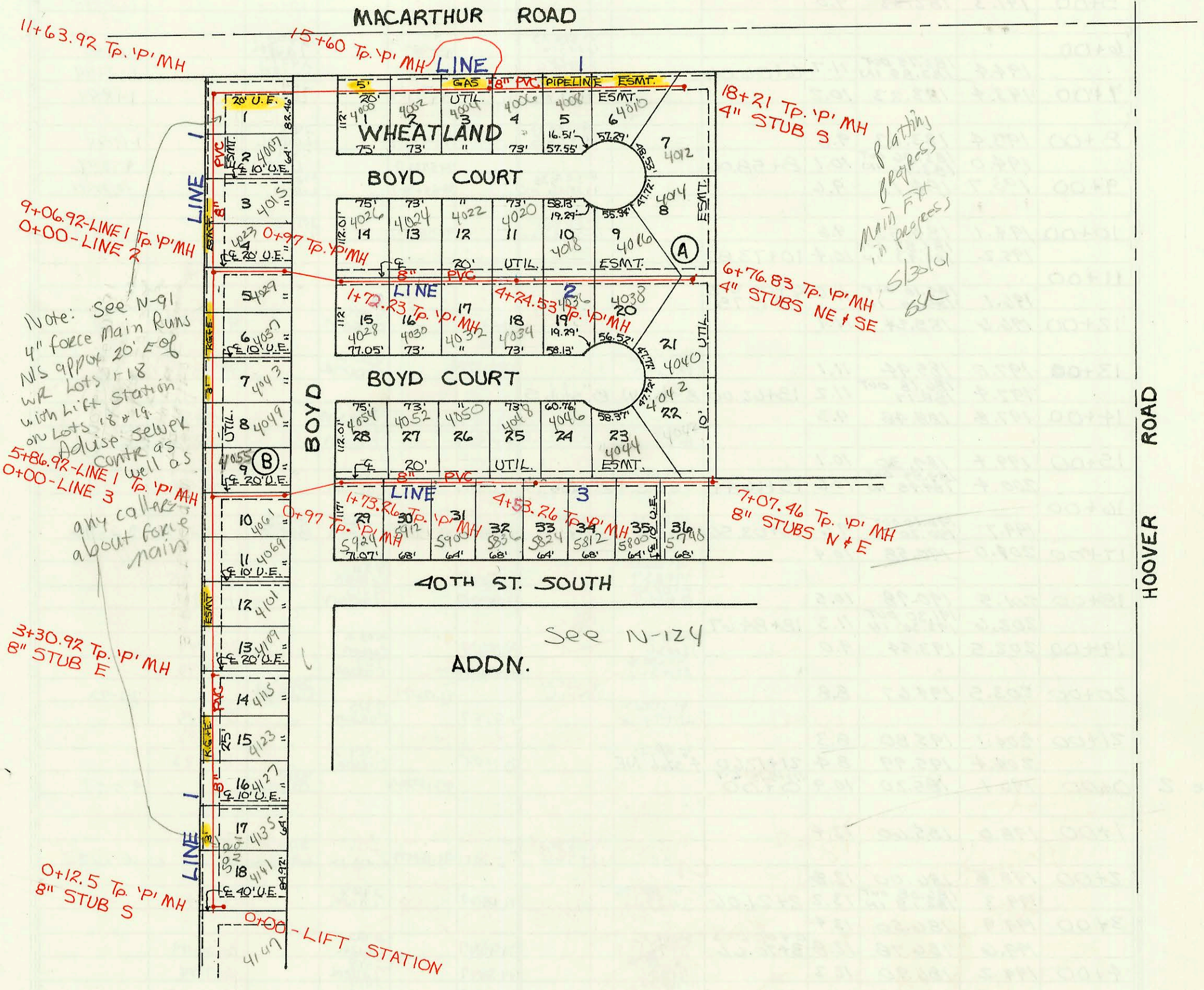
LATERAL 322, SOUTHWEST INTERCEPTOR SEWER
PROJ. NO. 468-82292 (741553)
BUILT BY MIES CONSTRUCTION CO.
BOOKED 10-27-93 AS PER PLAN

N

SCALE:

1" = 150'

MP



Note: See N-91
4" force main runs
N/S approx 20' E of
W/R lots 1-18
with lift station
on lots 18 & 14.
Advise sewer
contr as well as
any callouts
about force
main

Plating
Progress
Main Fit
in progress
Slab
6x

See N-124
ADDN.

CONSTRUCTION RECORD

SERVICE RECORD

STATION	ELEVATION		Depth	MANHOLE	4-INCH "Y" BRANCHES		No. of Permit		House Number		DATE OF PERMITS	
	Ground	Grade			North West	South East	North West	South East	North West	South East	North West	South East
Lateral	322	Southwest		Interceptor Sewer								
0+00	121.80	107.75	14.6	0+00								
	120.90	107.30 OUT 108.85 IN	13.6	0+12.5								
1+00	120.40	109.11	11.3		8" Stub S			2741	4141			9-30-94
					4" SDR 35 0+53.1				4135			10-30-96
					4" SDR 35 1+18.5			2000	4135			
2+00	120.20	109.41	10.8		4" SDR 35 1+98.9			2871	4187			8-16-95
					4" SDR 35 2+57.4			2385	4123			9-27-95
3+00	120.30	109.71	10.6		4" SDR 35 3+18.4			2839	4115			10-6-95
	120.50	109.80 OUT 109.90 IN	10.7	3+30.92	8" Stub E							
4+00	120.30	110.11	10.2		4" SDR 35 3+88.9			2884	4109			
					4" SDR 35 4+78.9			2898	4101			8-30-95
5+00	120.30	110.41	9.9		4" SDR 35 5+07.4			2734	4087			9-13-94
	121.50	110.67 OUT 110.77 IN	10.8	0+00-LINE 3 5+86.92	4" SDR 35 5+65.9			2818	4081			5-19-95
6+00	120.50	110.81	9.7		4" SDR 35 6+35.9			2784	4055			3-19-95
					4" SDR 35 7+00.9			2677	4049			6-10-94
7+00	120.90	111.11	9.8		4" SDR 35 7+00.9			2740	4043			9-30-94
					4" SDR 35 8+00.3			2697	4037			7-20-94
8+00	121.10	111.41	9.7		4" SDR 35 8+65.3			2562	4029			10-24-93
					4" SDR 35 9+59.5			2553	4023			10-15-93
9+00	121.80	111.71	10.1	0+00-LINE 2 9+06.92	4" SDR 35 9+24.9			2561	4015			11-12-93
	122.40	111.73 OUT 111.83 IN	10.7		4" SDR 35 10+54.9			2566	4007			1-12-93
10+00	122.20	112.11	10.1									
11+00	122.60	112.41	10.2									
	123.10	112.60 OUT 112.70 IN	10.5	11+63.92				2001 23112	4001			12-6-01
12+00	122.60	112.81	9.8									
13+00	122.80	113.11	9.7									
					4" SDR 35 13+91.0			2618	4005			2-17-94
14+00	123.00	113.41	9.6									
					4" SDR 35 14+26.4			2670	4002			5-20-94
15+00	123.20	113.71	9.5		4" SDR 35 15+41.0			2843	4004			10-6-95
	123.60	113.89	9.7	15+60								
16+00	123.30	114.01	9.3									
					4" SDR 35 16+71.1			2680	4006			6-10-94
17+00	123.30	114.31	9.0					2655	4008			4-8-94
					4" SDR 35 17+91			2842	4010			6-6-95
18+00	123.50	114.61	8.9									
	123.90	114.67	9.2	18+21	4" SDR 35 4" Stub S			2765	4012			12-16-94
0+00	122.40	111.73 OUT 111.83 IN	10.7	9+06.92-LINE 1 0+00								
1+00	121.40	112.12	9.3	0+97								
2+00	121.20	112.35	8.9	1+72.23								
	121.40	112.43	9.0		4" SDR 35 2+09.2	4" SDR 35 2+06.8	2563	2554	4026	4028	10-24-93	10-15-93
					4" SDR 35 2+90.2	4" SDR 35 2+90.2	2608		4030	4030	5-20-94	
3+00	122.80	112.73	10.1		4" SDR 35 3+04.5	4" SDR 35 3+80	2567	2568	4024	4025	11-12-93	11-12-93
					4" SDR 35 3+65.9 TAP	4" SDR 35 4+05.5	2621	2555	4025	4032	2-17-94	11-12-93
4+00	123.40	113.03	10.3		4" SDR 35 4+10.5 TAP	4" SDR 35 4+05.5	2644	2555	4020	4034	3-29-94	10-15-93
	123.80	113.10	10.7	4+74.53	4" SDR 35 4+73.1		2645		4018			3-29-94
5+00	123.70	113.33	10.4		4" SDR 35 4+91.1	4" SDR 35 5+74.3	2661	2808	4016	4036	5-9-94	5-9-94
					4" SDR 35 5+91.8	4" SDR 35 6+61.3	2671	2808	4016	4038	5-20-94	4-10-95
6+00	124.00	113.63	10.4					2730	4014			9-2-94
	124.60	113.86	10.7	6+76.83	4" SDR 35 4" Stub NE	4" Stub SE	2679		4014			6-10-94
0+00	121.50	110.67 OUT 110.77 IN	10.8	5+86.92-LINE 1 0+00								
1+00	121.30	111.06	10.2	0+97								
2+00	121.04	111.31	9.7	1+73.26	4" SDR 35 1+90.8	4" SDR 35 1+99.2	2601	2698	4054	5724	1-13-94	7-20-94
3+00	121.00	111.39	9.6		4" SDR 35 2+76.8 TAP	4" SDR 35 2+57.8	2591	2676	4052	5912	12-7-93	10-10-94
4+00	121.80	111.69	10.1		4" SDR 35 3+77	4" SDR 35 4+02.7	2600	2706	4050	5900	1-13-93	7-29-94
	122.40	111.99	10.4		4" SDR 35 4+26.3		2669	2766	4048	5836	5-20-94	2-16-94
5+00	123.06	112.15	10.9	4+53.26			2705	2705	5824	5824	7-29-94	7-29-94
	123.80	112.29	10.5		4" SDR 35 5+24.2		2841		5812	5812		6-6-95
6+00	123.40	112.59	10.8		4" SDR 35 6+33.4 TAP	4" SDR 35 6+08.0	2602	2704	4046	5800	1-13-94	
							2656		4044	5800	4-8-94	7-29-94
7+00	123.50	112.89	10.6		4" SDR 35 6+83.46	4" SDR 35 6+52.9	2742	3009	4042	5748	9-30-94	7-29-96
	123.90	112.91	11.0	7+07.46	8" Stub N	8" Stub E						

LINE 1

LINE 2

LINE 3

2754 - 11-16-94 4055 S Boyd-Mies - This permit voided
job canceled - 2-6-94

8-27-94 31-95 10-2-95 11-12-95