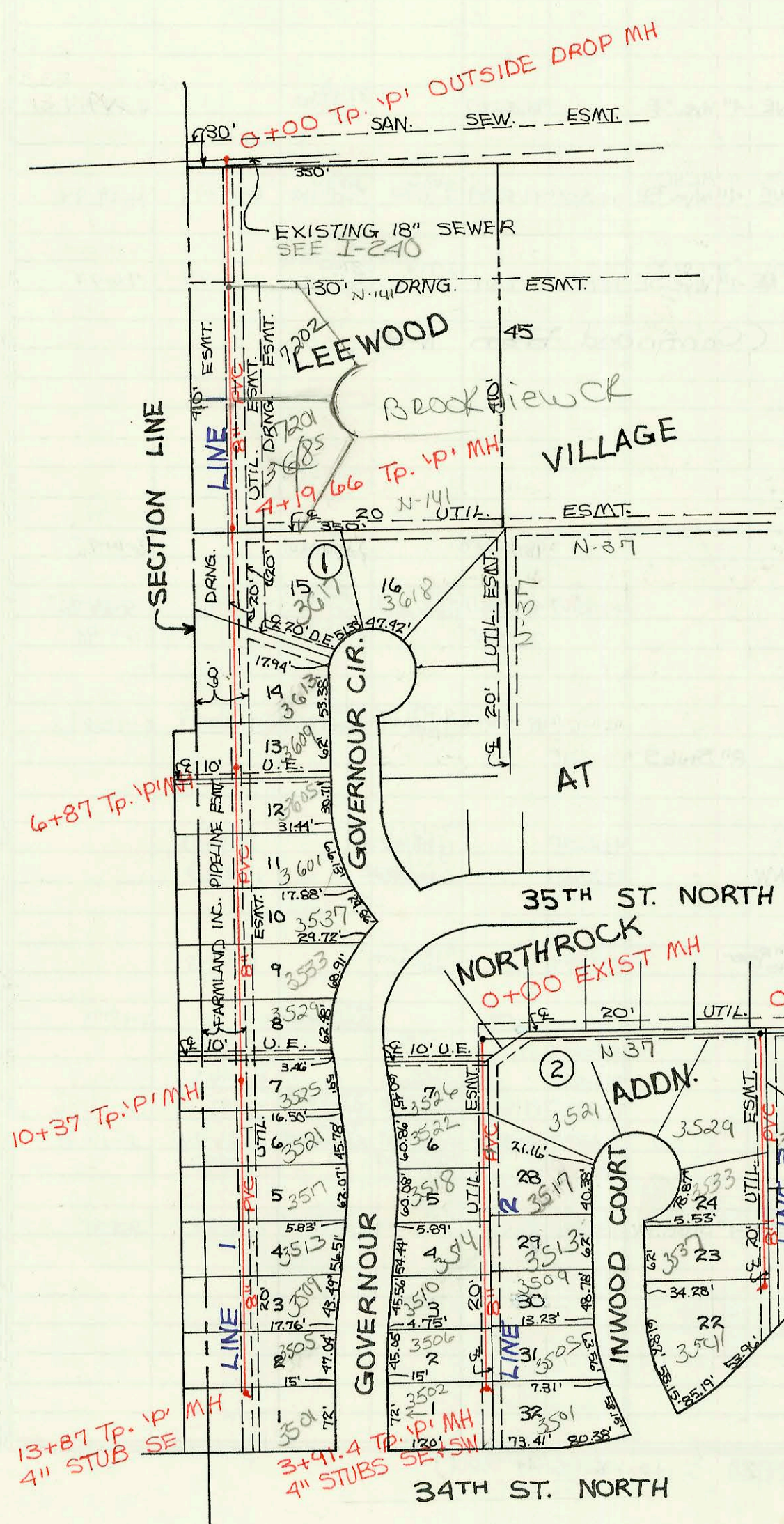


LATERAL 124, MAIN 4, S.S. # 23
 PROJ. NO. 468-82257 (741355)
 BUILT BY DONNA SAVINA PLUMBING
 BOOKED 11-23-93 AS PER PLAN



LATERAL 46, MAIN 9, S.S. # 23
 PROJ. NO. 468-82198 (741595)
 BUILT BY WILDCAT CONSTRUCTION CO.
 BOOKED 11-23-93 FROM AS BUILTS

CONSTRUCTION RECORD						SERVICE RECORD						
STATION	ELEVATION		Depth	MANHOLE	4-INCH "Y" BRANCHES		No. of Permit		House Number		DATE OF PERMITS	
	Ground	Grade			North West	South East	North West	South East	North West	South East	North West	South East
Lateral 1	174	Main 4	5.5	# 23								
0+00	131.00	125.06 OUT 125.40 IN	5.9	0+00								
0+25	130.54	125.50	5.0		4" Wye W.S.W.	4" Wye S	94-206-7	94-245-7	1409 W 357 N	11405 W 357 N	1-6-94	1-6-94
Lateral 46		Main 9	5.5	# 23								
0+00	181.86	164.42 OUT 172.10 IN	17.4	0+00								
1+00	184.00	172.67	11.3									
2+00	184.80	173.24	11.6			4" sch 40 2+27.7		95-2017-7		7202 Rockview		12-8-95
3+00	184.40	173.82	10.6			4" sch 40 3+74.6		95-7809-7		7201 Rockview		5-24-95
4+00	183.60	174.39	9.2			4" sch 40 4+89.6		93-29999-7		3617 Governor		11-7-93
5+00	183.60	175.43	8.2	4+19.66		4" sch 40 5+99.0		93-30860-7		3613 Governor		11-29-93
6+00	184.20	176.48	7.7			4" sch 40 6+76.0		94-9729-7		3609 Governor		6-13-94
7+00	185.00	177.56	7.4	6+87		4" sch 40 7+21.0		94-9722-7		3655 Governor		6-13-94
8+00	187.10	178.54	8.6			4" sch 40 8+44.0		94-222-7		3601 N Governor		2-16-94
9+00	187.40	179.53	7.9			4" sch 40 9+19.0		94-9724-7		3533 Governor		6-13-94
10+00	187.00	180.52	6.5			4" sch 40 10+29.0		94-2221-7		3529 Governor		2-16-94
	187.63	180.88 OUT 180.96 IN	6.8	10+37		4" sch 40 10+29.0		94-2219-7		3525 Governor		2-16-94
11+00	187.90	181.60	6.3			4" sch 40 11+48.0		94-5882-7		3521 Governor		4-21-94
12+00	189.10	182.63	6.5			4" P.V.C. 40 12+24.0		95-1181-7		3513 Governor		1-24-95
13+00	190.20	183.65	6.6			4" sch 40 13+09.0		95-2152-7		3524 Governor		2-13-95
	191.94	184.54	7.4	13+87		4" sch 40 13+52.0		95-6189-7		3505 Governor		4-27-95
LINE 2	0+00	181.67 OUT 181.82 IN	12.5	0+00		4" stub SE		94-9725-7		3501 Governor		6-13-94
1+00	195.70	182.55	13.2			4" sch 40 1+24.0		94-9726-7		3526 Governor		6-13-94
2+00	197.00	183.28	14.5			4" sch 40 2+49.4		94-1865-7		3522 Governor		11-4-94
3+00	198.00	184.00	14.0			4" sch 40 3+01.4		95-1115-7		3518 Governor		1-24-95
4+00	197.74	184.67	13.1	3+91.4		4" sch 40 4+74.8		94-1840-7		3517 N Governor		11-4-94
5+00	196.46	179.90 OUT 184.93 IN	11.5	0+00		4" stub SW		95-7808-7		3514 N Governor		5-24-95
6+00	197.40	185.59	11.8			4" sch 40 6+01.4		94-14577-7		3510 Governor		4-27-95
7+00	198.20	186.24	12.0			4" sch 40 7+26.2		94-14845-7		3500 N Governor		9-9-94
8+00	198.10	186.78	11.3	2+82.2		4" stub SW		95-15076-7		3502 N Governor		9-21-95
9+00												
10+00												
11+00												
12+00												
13+00												
14+00												
15+00												
16+00												
17+00												
18+00												
19+00												
20+00												
21+00												
22+00												
23+00												
24+00												
25+00												
26+00												
27+00												
28+00												
29+00												
30+00												
31+00												
32+00												
33+00												
34+00												
35+00												
36+00												
37+00												
38+00												
39+00												
40+00												
41+00												
42+00												
43+00												
44+00												
45+00												
46+00												
47+00												
48+00												
49+00												
50+00												

LINE 1

LINE 2

LINE 3

Form #192-020 (July, 1981) 95-13236-7 8/22/95 3513 N. Inwood Ct - Repl 10' at main with sch 40 pipe. Line hit while doing sewer for 3514 Governor.