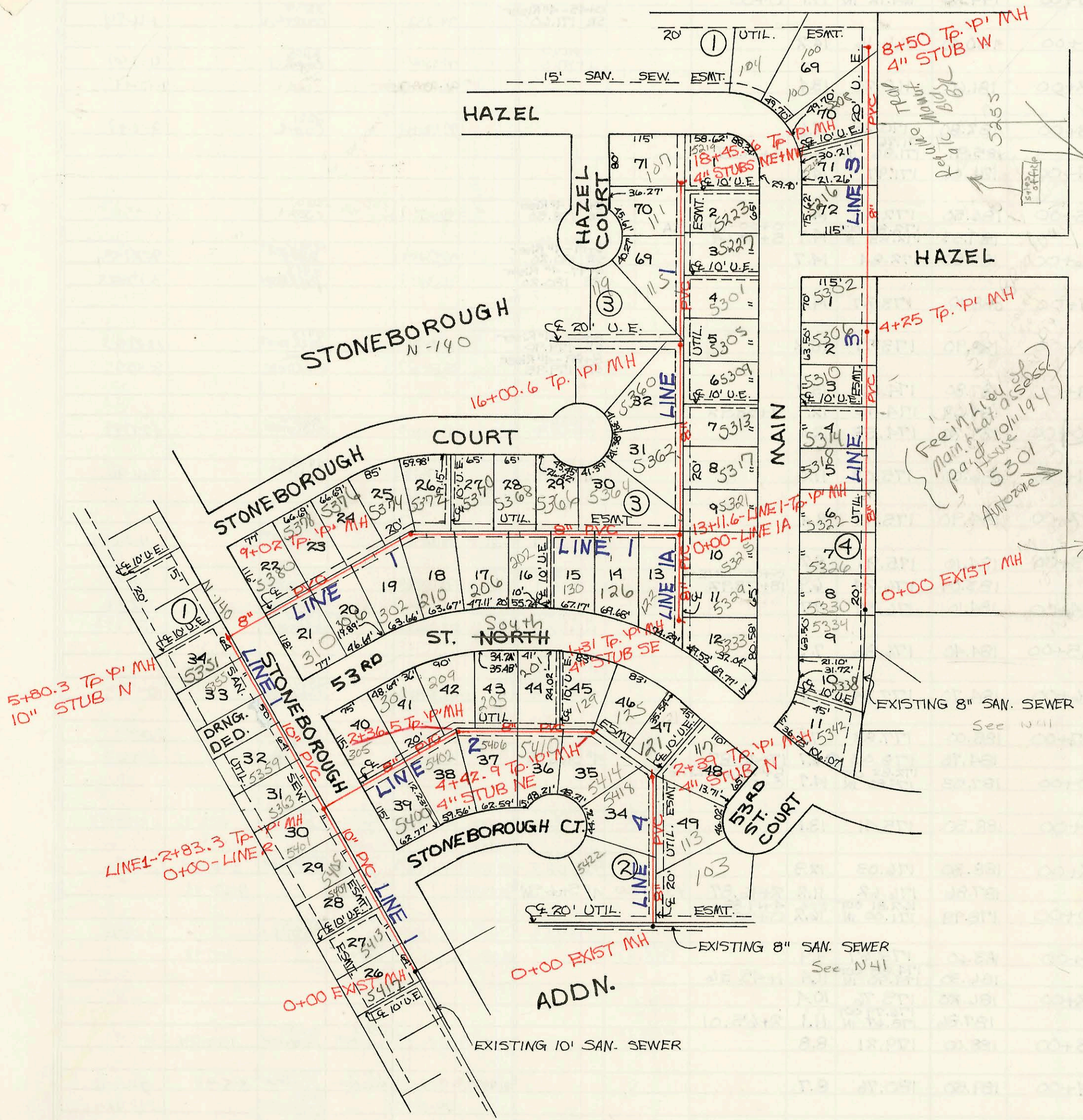


LATERAL 325, SOUTHWEST INTECEPTOR SEWER  
PROJ. NO. 468-82327 (741587)  
BUILT BY DULING CONSTRUCTION CO.  
BOOKED 12-21-93 AS PER PLAN



SCALE: 1" = 150'

MP



NO "in Line" fees  
Due per DEC  
per system planning

Fee in Lieu of  
Main & Lat. Assess  
Paid 10/11/94  
House  
5301  
Antozore

No further  
"in Line" fees due  
along way

EXISTING 8" SAN. SEWER  
See N41

EXISTING 8" SAN. SEWER  
See N41

EXISTING 10' SAN. SEWER

ADDN.  
0+00 EXIST MH

LINE 1-2+83.3 TP  
0+00-LINE R

5+80.3 TP 4" MH  
10" STUB N

0+00 EXIST MH

13+11.6-  
LINE 1-TP 4" MH

0+00 EXIST MH

4+25 TP 4" MH

16+00.6 TP 4" MH

8+50 TP 4" MH  
4" STUB W

STONEBOROUGH  
N-140

COURT

ST. NORTH

STONEBOROUGH CT.

53 RD

53 RD

ST. COURT

HAZEL

HAZEL

HAZEL COURT

BROADWAY

UTIL.

ESMT.

15' SAM. SEW.

U.F.

U.F.

U.F.

U.F.

U.F.

U.F.

U.F.

U.F.

U.F.

U.F.

U.F.

U.F.

U.F.

U.F.

U.F.

U.F.

U.F.

U.F.

U.F.

U.F.

U.F.

U.F.

U.F.

U.F.

U.F.

U.F.

U.F.

U.F.

U.F.

U.F.

U.F.

U.F.

U.F.

U.F.

U.F.

U.F.

U.F.

U.F.

U.F.

U.F.

U.F.

U.F.

U.F.

U.F.

U.F.

U.F.

U.F.

U.F.

U.F.

U.F.

U.F.

U.F.

U.F.

U.F.

U.F.

U.F.

U.F.

U.F.

U.F.

U.F.

U.F.

U.F.

U.F.

U.F.

U.F.

U.F.

U.F.

U.F.

U.F.

U.F.

U.F.

U.F.

U.F.

U.F.

U.F.

U.F.

U.F.

U.F.

U.F.

U.F.

U.F.

U.F.

U.F.

U.F.

U.F.

U.F.

U.F.

U.F.

U.F.

U.F.

U.F.

U.F.

U.F.

U.F.

U.F.

U.F.

U.F.

U.F.

U.F.

U.F.

U.F.

U.F.

U.F.

U.F.

U.F.

U.F.

U.F.

U.F.

U.F.

U.F.

U.F.

U.F.

U.F.

U.F.

U.F.

U.F.

U.F.

U.F.

U.F.

U.F.

U.F.

U.F.

U.F.

U.F.

U.F.

U.F.

U.F.

U.F.

U.F.

U.F.

U.F.

U.F.

U.F.

U.F.

U.F.

U.F.

U.F.

U.F.

U.F.

U.F.

U.F.

U.F.

U.F.

U.F.

U.F.

U.F.

U.F.

U.F.

U.F.

U.F.

U.F.

U.F.

U.F.

U.F.

U.F.

U.F.

U.F.

U.F.

U.F.

CONSTRUCTION RECORD							SERVICE RECORD						
STATION	ELEVATION		Depth	MANHOLE	4-INCH "Y" BRANCHES		No. of Permit		House Number		DATE OF PERMITS		
	Ground	Grade			North West	South East	North West	South East	North West	South East	North West	South East	
LINE 1	Laterals	325 SW											
	0+00	83.70	71.02 OUT 71.38 IN	12.7	0+00	4" PVC 40 0+70.0 TAP 4" PVC 40 0+69.0 4" PVC 40 1+22.0		95-4907		5417 S Stoneborough 5413 S Stoneborough 5409 Stoneborough		1-11-95 4-29-94 11-2-94	
	1+00	83.00	71.56	11.4				94-1201-7					
	2+00	83.00	71.74	11.3				94-642-7		5405 Stoneborough		4-29-94	
		83.70	71.89	11.8	0+00-LINE 2 2+83.3	4" sch 40 2+54 4" sch 40 TAP 30" N/S PL 4" PVC 40 3+96.0		94-1748-7		5401 S Stoneborough 5363 S Stoneborough 5359 S Stoneborough		1-28-94 6-12-94 3-8-94	
	3+00	82.90	71.92	11.0				94-1006-7					
	4+00	82.80	72.10	10.7				94-1224-0					
	5+00	83.00	72.28	10.7				94-2005-7		5355 S Stoneborough		6-12-94	
		83.70	72.43 OUT 72.60 IN	11.3	5+80.3	4" sch 40 5+71.3 4" PVC 10" Stub N		95-4937		5351 W/S Stoneborough		1-11-95	
	6+00	83.30	72.68	10.6									
	7+00	83.90	73.08	10.8				96-14548-7	94-9750-7	5380 Stoneborough 5370 Stoneborough	310 W 53rd S 306 33rd S	8-28-96 6-12-94 2-13-95 2-27-96	
	8+00	84.50	73.48	11.0				95-492-7	94-9751-7	5376 Stoneborough 5374 Stoneborough	302 W 53rd R10	1-11-95 6-12-94 2-12-95 3-8-94	
	9+00	84.70	73.88	10.8				95-10745-7	94-3229-7	5372 Stoneborough		7-11-95 2-12-95 3-8-94	
	84.70	73.89 OUT 73.99 IN	10.8	9+02	4" PVC 40 8+36 N/C 4" sch 40 8+92.5 4" sch 40 PVC 9+34.0	4" PVC 40 10+27.4 4" PVC 40 7+75.1 4" PVC 40 10+14.5 N/C 4" sch 40 10+91.0 4" sch 40 10+67.7 4" sch 40 11+32.6		95-491-7	95-488-7	5370 Stoneborough 5368 Stoneborough 5366 Stoneborough	206 W 53rd 202 W 53rd 136 W 53rd S	1-11-95 1-11-95 5-15-95 4-26-95 9-26-94	
10+00	84.30	74.38	9.9				95-6655-7	94-15109-7	5364 Stoneborough		8-24-95 1-11-95		
11+00	84.00	74.78	9.2				95-13536-7	95-489-7	5364 Stoneborough	126 W 53rd S 122 W 53rd S	8-24-95 1-11-95 9-26-94		
12+00	84.20	75.18	9.0				94-15608-7	94-13250-7	5321 S Main		8-16-94		
13+00	84.50	75.58	8.9				94-00522-7	94-00522-7	5362 Stoneborough	5317 S Main ST.	4-20-98 3-8-94		
	84.50	75.63 OUT 75.73 IN	8.9	0+00-LINE 1A 13+11.6			94-6152-7		5313 Main		4-29-94		
14+00	84.90	76.00	8.9				95-13541-7	94-1803-7	5360 Stoneborough	5309 Main	8-25-95 11-2-94		
15+00	85.40	76.30	9.1				95-2073-7		5305 Main		2-13-95		
16+00	85.80	76.60	9.2				94-584-7	94-1324-7	11 SW Hazel Ct	5301 S Main	5-31-97 8-16-94		
17+00	86.30	76.90	9.4				95-485-7	94-1801-7	5227 Main	5223 Main	1-11-95 3-6-96 11-2-94		
18+00	86.50	77.20	9.3				94-11225-7	94-11225-7	107 W Hazel	5219 S Main	9-27-96 7-12-94		
LINE 1A	0+00	84.50	75.63 OUT 75.73 IN	8.9	13+11.6-LINE 1 0+00	4" sch 40 14+22.6 4" sch 40 PVC 14+60.6 4" sch 40 15+10.6	4" sch 40 10+14.5 N/C 4" PVC 40 10+78.6 4" sch 40 11+32.6		94-7518-7	94-00522-7	5362 Stoneborough	5317 S Main ST.	4-20-98 3-8-94
LINE 2	0+00	83.70	71.89 OUT 72.06 IN	11.8	0+00	4" sch 40 0+38.0 4" sch 40 PVC 0+98 sch 40 4" Stub SE		94-9705-7		5325 Main		6-13-94	
1+00	84.30	76.13	8.2				94-11212-7		5329 S Main		7-12-94		
LINE 3	0+00	83.70	71.89 OUT 72.06 IN	11.8	0+00	4" sch 40 1+16.9 4" sch 40 1+86.5 4" sch 40 1+82.9 TAP	4" sch 40 10+14.5 N/C 4" PVC 40 10+78.6 4" sch 40 11+32.6		94-1747-7		305 W 53rd S		1-28-94
1+00	83.70	72.46	11.2				94-13252-7	94-16507-7	351 W 53rd S	5405 S Stoneborough 5402 S Stoneborough	8-16-94 4-29-94		
2+00	84.10	72.85	11.3				94-11222-7		209 W 53rd S		7-12-94		
3+00	84.20	73.00 OUT 73.10 IN	11.2	2+36.5			95-6644-7	94-1746-7	205 W 53rd S	5406 Stoneborough	4-26-95 1-28-94		
4+00	83.90	73.76	10.1				95-489-7	94-13254-7	201 W 53rd S	5410 S Stoneborough	1-11-95 8-16-94		
5+00	84.20	73.93	10.3	4+42.9			94-11223-7		124 W 53rd S		7-12-94		
LINE 4	0+00	86.00	74.53 OUT 74.53 IN	11.5	0+00	4" sch 40 0+42.6 4" sch 40 0+28.6	4" sch 40 4+13.9		94-1916-7	94-11216-7	125 W 53rd S	5411 S Stoneborough	12-9-94 7-12-94
1+00	85.30	74.83	10.5				94-3232-7		5330 Main		3-8-94		
2+00	85.40	75.13	10.3				94-3233-7		5336 Main		3-8-94		
3+00	85.20	75.44	9.8				94-1203-7		5322 S Main		7-28-94		
4+00	86.10	75.74	10.4				95-2027-7		5318 Main		2-13-95		
5+00	86.00	76.04	10.0				94-1992-7		5314 Main		12-9-94		
6+00	86.00	76.34	9.7				94-18015-7		5310 S Main		11-2-94		
7+00	86.40	76.64	9.8				94-1801-7	94-11692-7	5306 S Main	5301 S Broadway	8-16-94 10-12-94		
8+00	86.50	76.94	9.6				94-1801-7		5302 S Main		11-2-94		
LINE 4	0+00	85.00	73.51 OUT 73.71 IN	11.5	0+00	4" sch 40 1+6.0 4" sch 40 PVC 2+35 4" sch 40 PVC 2+92.0 4" sch 40 PVC 3+57.5 4" sch 40 3+78 TAP 4" PVC 40 4+19.5	4" sch 40 4+13.9		94-15612-7		100 W Hazel		9-27-94
1+00	84.90	74.12	10.8				94-1761-7		5422 S Stoneborough		1-28-94		
2+00	84.50	74.54	10.0				94-15581-7	94-1744-7	5419 S Stoneborough	113 W 53rd Ct	9-27-94 1-28-94		
3+00	84.30	74.70	9.6	2+39			94-13253-7	96-9650-1	131 W 53rd S	117 S 53rd	8-16-94 5-30-96		

94-2266-7 2-19-97 5301 S. Broadway - Autozone -