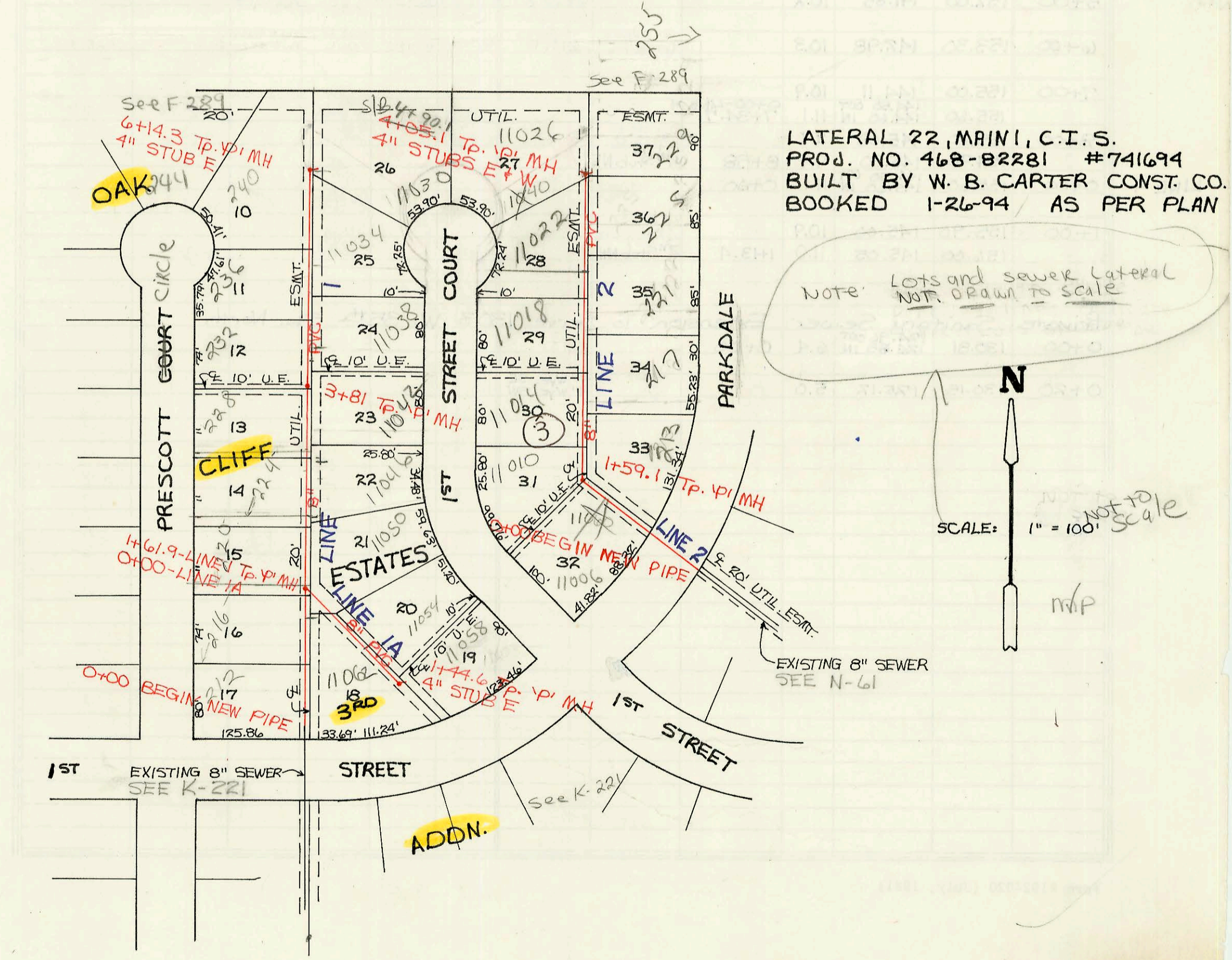
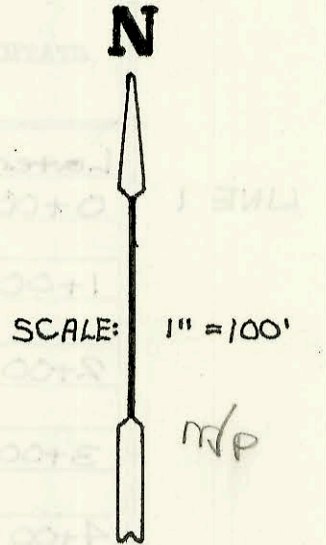
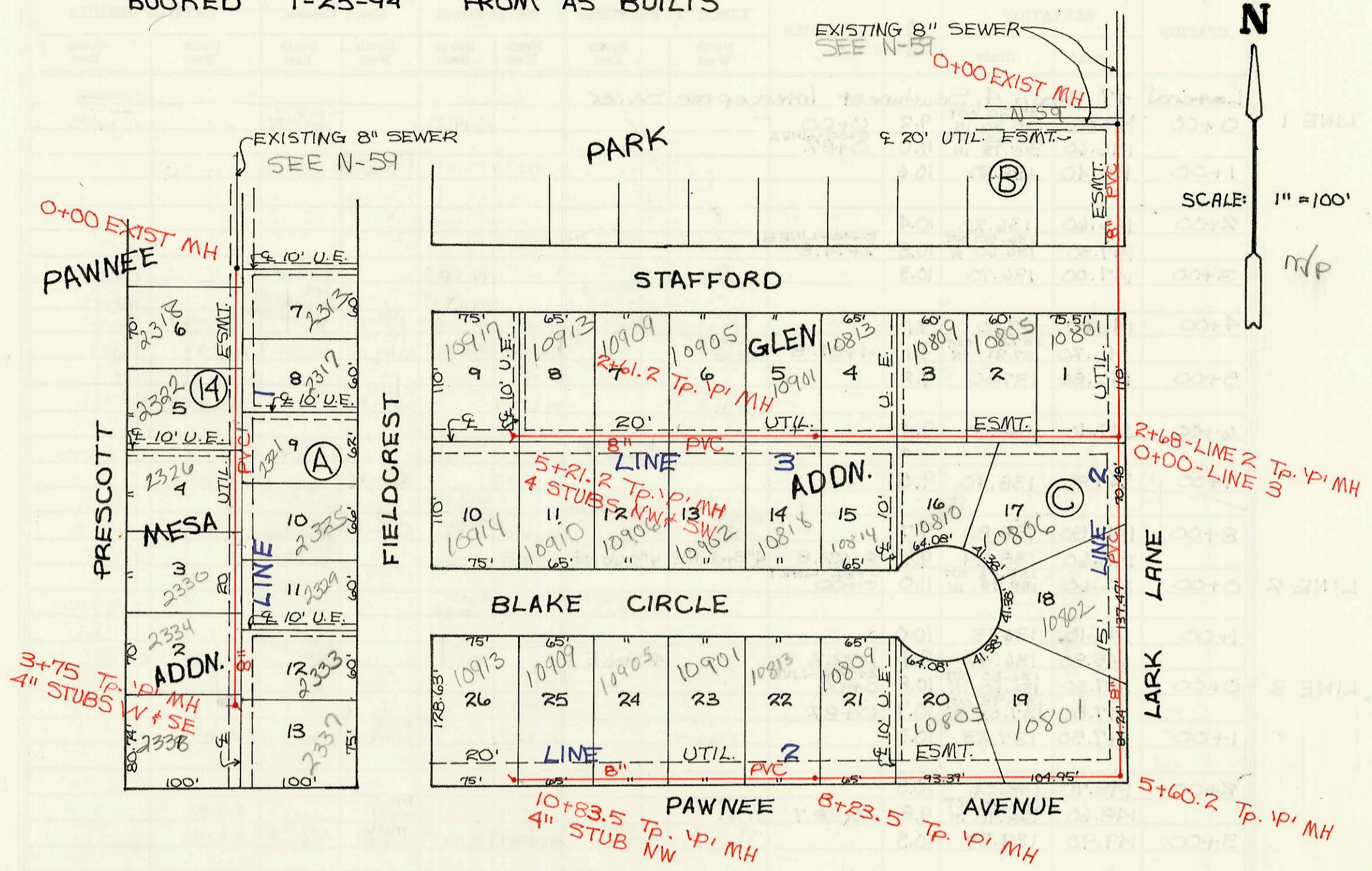
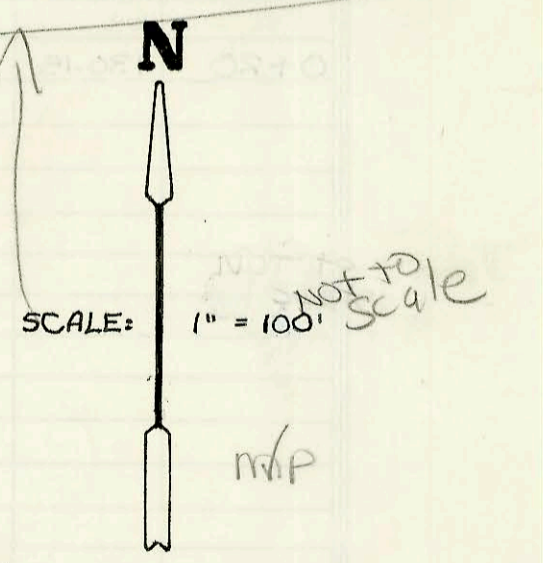


LATERAL 9, MAIN 13, SOUTHWEST INTERCEPTOR SEWER  
PROJ. NO. 468-82245 (741710)  
BUILT BY NOWAK CONSTRUCTION CO.  
BOOKED 1-25-94 FROM AS BUILTS



LATERAL 22, MAIN 1, C.I.S.  
PROJ. NO. 468-82281 #741694  
BUILT BY W. B. CARTER CONST. CO.  
BOOKED 1-26-94 AS PER PLAN

Note: Lots and sewer lateral NOT DRAWN TO SCALE



CONSTRUCTION RECORD							SERVICE RECORD					
STATION	ELEVATION		Depth	MANHOLE	4-INCH "Y" BRANCHES		No. of Permit		House Number		DATE OF PERMITS	
	Ground	Grade			North West	South East	North West	South East	North West	South East	North West	South East
Lateral 9, Main 13 Southwest Interceptor Sewer												
LINE 1 0+00	143.50	134.64 out 134.76 IN	8.9	0+00	4" SDR 35 0+65.0	4" SDR 35 0+38.0	95-2031-7	95-7623-7	2318 Prescott	2313 Fieldcrest	12-4-95	5-22-95
1+00	143.50	135.16	8.3		4" SDR 35 1+39.0	4" SDR 35 1+00.0	95-2032-7	94-2892-7	2320 Prescott	2317 Fieldcrest	12-4-95	3-1-94
2+00	143.70	135.56	8.1		4" SDR 35 2+05.0	4" SDR 35 2+37.0	94-1478-7	95-4272-7	2326 Prescott	2325 Fieldcrest	6-11-96	3-22-95
3+00	144.50	135.96	8.5		4" SDR 35 2+33.0	4" SDR 35 2+68	96-9184-7	94-1420-7	2334 Prescott	2329 Fieldcrest	6-11-96	9-2-94
LINE 2 0+00	145.40 143.70	136.76 133.02 out 133.17 IN	9.1 10.7	3+75 0+00	4" Stub W	4" Stub SE	2000- 01953	95-5107-7 94-1181-7	2334 Prescott	2333 Fieldcrest	6-11-96	4-19-95
1+00	144.10	133.57	10.5									
2+00	144.20 144.40	133.97 134.24 out 134.24 IN	10.2 10.2									
3+00	143.90	134.37	9.5									
4+00	143.40	134.77	8.6		4" SDR 35 4+00.2		94-3593-7		10802 Blake		3-17-94	
5+00	142.60 142.50	135.17 135.41 out 135.51 IN	7.4 7.1	5+60.2	4" SDR 35 4+75.2		94-3594-7		10801 Blake		3-17-94	
6+00	142.60	135.67	6.9									
7+00	143.70	136.07	7.1		4" SDR 35 7+16.0		94-1280-7		10805 Blake		8-5-94	
8+00	143.70 144.10	136.47 136.56 out 136.56 IN	7.2 7.5	8+73.5	4" SDR 35 7+75.0		94-11700-7		10804 Blake CR		7-20-94	
9+00	144.20	136.87	7.3		4" SDR 35 8+52.5 Top		95-1213-7		10813 Blake		1-24-95	
10+00	144.50 144.80	137.27 137.60	7.2 7.2		4" SDR 35 10+49.5		94-6285-7		10451 Blake CR		4-29-94	
LINE 3 0+00	144.40	134.24 out 134.34 IN	10.2	10+83.5 2+68-LINE 2 0+00	4" Stub NW		94-9857-7		10913 Blake CR		6-10-94	
1+00	144.50	134.74	9.8		4" SDR 35 0+81.5	4" SDR 35 0+53.0	95-2071-7	94-6387-7	10801 Stafford	10806 Blake	12-19-95	6-9-90 4-29-94
2+00	144.80	135.14	9.7		4" SDR 35 1+55 Top	4" SDR 35 1+72	95-1214-7	94-5241-7	10804 Stafford	10810 Blake CR	1-24-95	4-12-94
3+00	145.50 144.80	135.38 135.54	10.1 9.3	2+61.2	4" SDR 35 2+19.2	4" SDR 35 2+44.2	94-1047-7	94-1189-7	10813 Stafford	10814 Blake CR	7-1-94	7-20-94
4+00	143.60	135.94	7.7		4" SDR 35 3+55.2	4" SDR 35 3+66.2	94-1737-7	94-7153-7	10911 Stafford	10818 Blake CR	10-14-94	5-18-94
5+00	142.30 142.20	136.34 136.47	6.0 5.8	5+21.2	4" SDR 35 4+86.2	4" SDR 35 4+79.6	94-1424-7	94-5571-7	10905 Stafford	10902 Blake CR	9-2-94	6-10-94
					4" SDR 35 4+15.7	4" SDR 35 4+26.2	94-2016-7	94-9252-7	10909 Stafford	10916 Blake CR	12-16-94	6-10-94
					4" SDR 35 4+79.6		94-5186-7		10910 Stafford	10910 Blake CR	6-10-94	
					4" SDR 35 4+86.2		94-1927-7		10913 Stafford		11-9-94	
					4" SDR 35 4+86.2	4" SDR 35 4" Stub SW	95-8807-7	95-3667-7	10917 Stafford	10914 Blake CR	1-20-95	3-8-95
Lateral 22, Main 1, Cowskin Interceptor Sewer												
LINE 1 0+00	150.20	140.68	9.5	0+00			97-13618-7		212 Prescott		7-31-97	
1+00	149.80 149.65	140.98 141.17 out 141.27 IN	8.8 8.5	0+00-LINE 1A 1+61.9	4" sch 40 1+20.9		96-2954-7		216 N Prescott CR		8-6-94	
2+00	149.90	141.47	8.5		4" sch 40 2+02.4	4" sch 40 2+07.9	95-6175-7	96-8663-7	220 N Prescott	11050 w 1st ct	4-26-95	5-30-96
3+00	150.40 151.05	141.82 142.15 out 142.25 IN	8.6 8.9	3+81	4" sch 40 2+75.9	4" sch 40 2+85.0	95-13151-7	95-5277-7	224 N Prescott	11046 1st ct	8-21-95	4-11-95
4+00	151.00	142.33	8.7		4" sch 40 3+10.0	4" sch 40 3+26.0	95-13527-7	96-3115-7	228 N Prescott	11042 1st ct	8-21-95	3-6-96
5+00	151.50	142.73	8.8		4" sch 40 3+41.0		95-1928-7		232 N Prescott	11088 w 1st ct	7-17-95	9-28-95
6+00	152.00 152.10	143.12 143.18	8.9 8.9	6+14.3	4" sch 40 4+86.0		96-11247-7		236 N Prescott	11034 w 1st ct	7-12-96	
LINE 1A 0+00	149.65	141.84 out 141.17 IN	7.8	1+61.9-LINE 1A 0+00	4" sch 40 0+89	4" sch 40 4" Stub E	94-9686-7		240 N Prescott CR	11034 w 1st ct	1-9-96	6-13-94
1+00	150.10	142.24	7.9		4" SDR 35 0+89		97-10624-7		11052 w 1st ct		6-18-97	7-14-94
2+00	149.70	142.82	7.0	1+59.1	4" SDR 35 1+30.0		94-1753-7		11054 w 1st ct		6-21-94	
3+00	150.40	143.38	7.0		4" sch 40 2+20.7	4" sch 40 2+54.1	94-9686-7		11052 w 1st ct			
4+00	150.90 151.50	143.78 144.14	7.1 7.4	4+05.1	4" sch 40 3+57.1	4" sch 40 3+80.5	94-1754-7	96-3892-7	11056 w 1st ct	11054 w 1st ct	1-28-94	1-18-96
					4" sch 40 1+30.0		94-1753-7		11056 w 1st ct		1-28-94	
					4" sch 40 1+69.1		95-10707-7		11010 w 1st ct		4-26-95	
					4" sch 40 2+20.7	4" sch 40 2+54.1	95-4957-7	94-12937-7	11014 w 1st ct	213 N Parkdale	4-11-95	8-9-94
					4" sch 40 2+96.1	4" sch 40 2+54.1	94-6660-7	94-12937-7	11018 w 1st ct	217 N Parkdale	4-29-94	9-9-94
					4" sch 40 3+57.1	4" sch 40 3+80.5	94-13291-7	96-2033-7	11022 w 1st ct	225 N Parkdale	8-16-94	2-16-94